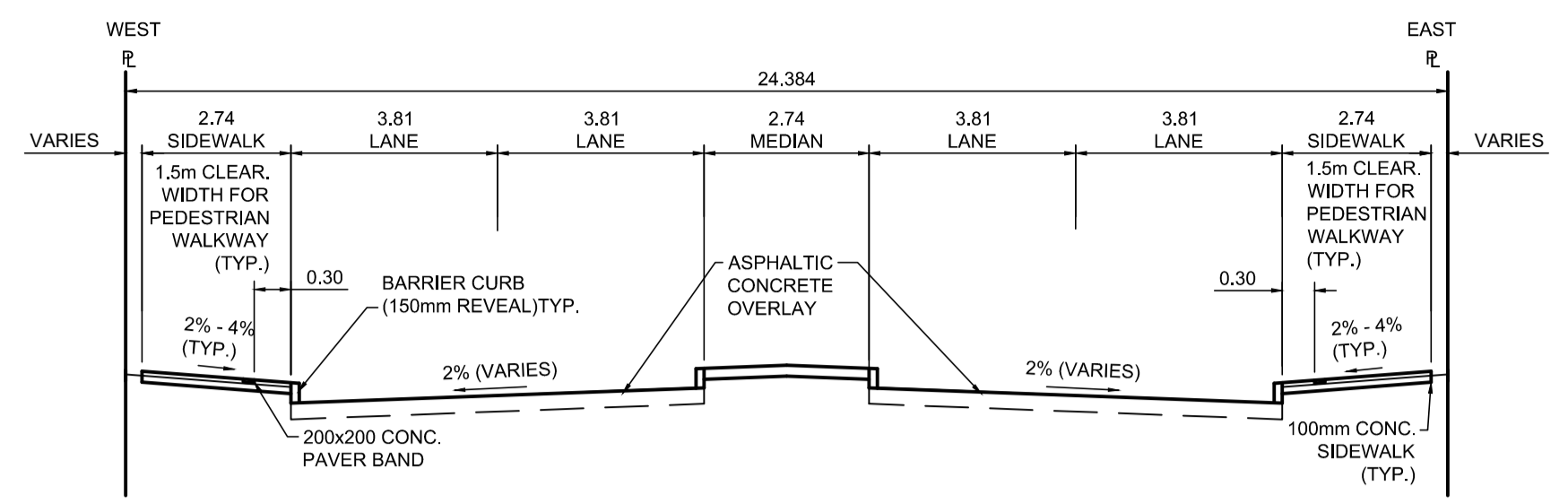


PROFILE
Scale H=1:250 V=1:10

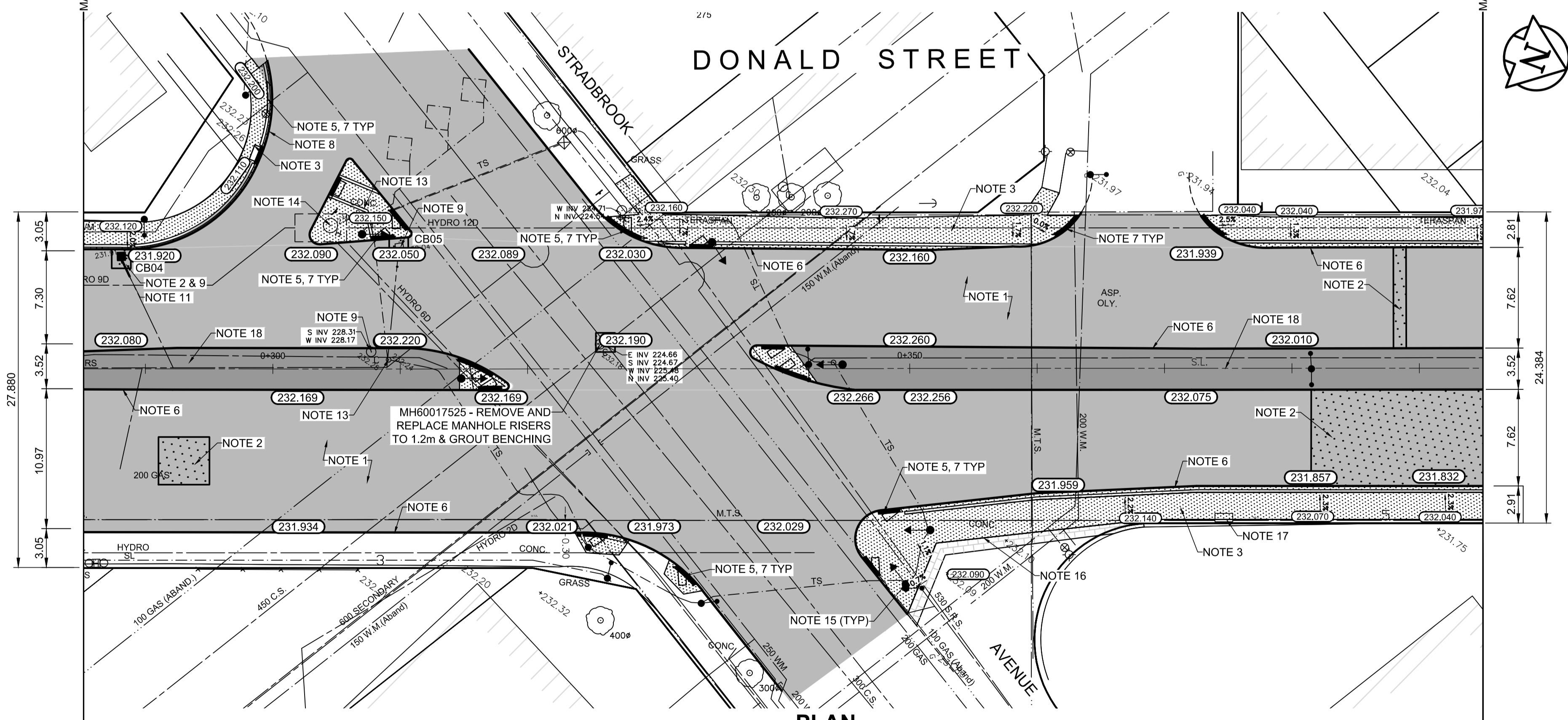


TYPICAL SECTION
Scale NTS

ITEM	RIM ELEV.	Sta	INVERT					CONNECTION	LEAD	FLOW RESTRICTOR		
			EAST	WEST	NORTH	SOUTH	V. RISER					
CB04	231.920W	0+288	230.320					229.780	223.61±	300 SRS	14.0 m-2500 @ 2% Min	NA
CB05	232.050W	0+310										

- REFERENCE NOTES**
- PAVEMENT DIMENSIONS ARE TO BACK OF CURB
 - BASELINE IS CENTRELINE OF RIGHT-OF-WAY
 - PROPERTY LINES OBTAINED FROM THE CITY OF WINNIPEG L.B.I.S., AND SCALE FACTOR WAS NOT APPLIED
 - REFER TO AECOM FIELD BOOK NO. 5062 - 5069, 5072
 - CATCH BASIN CONNECTIONS TO SEWER DESIGNED TO MAINTAIN PRE-CONSTRUCTION CAPACITY BY CATCH BASIN LEAD RESTRICTION AS INDICATED ON THE DRAWINGS. ADDITIONAL OR MODIFIED CONNECTIONS TO THE SEWER SYSTEM BEYOND THOSE INDICATED ON THE DRAWINGS REQUIRE REVIEW AND WRITTEN APPROVAL BY THE CONTRACT ADMINISTRATOR.

- CONSTRUCTION NOTES**
- PLANE EXISTING ASPHALT AND CONSTRUCT NEW ASPHALTIC PAVEMENT OVERLAY TYPE 1A (AVERAGE THICKNESS 85mm)
 - REMOVE EXISTING PAVEMENT AND CONSTRUCT NEW 230mm PLAIN DOWELLED CONCRETE PAVEMENT
 - REMOVE EXISTING CONCRETE SIDEWALK AND CONSTRUCT NEW 100mm SIDEWALK WITH BLOCKOUTS OF PAVING STONES FOR INDICATOR SURFACE (SEE CT-30)
 - PLACE ASPHALT PAVEMENT (TYPE 1A)
 - INSTALL NEW DETECTABLE SURFACE WARNING TILES
 - CONSTRUCT NEW BARRIER CURB (150mm REVEAL HT. SEPARATE)
 - CONSTRUCT NEW MONOLITHIC CURB RAMP (10mm HT. INTEGRAL)
 - CONSTRUCT NEW MODIFIED BARRIER CURB (180mm HT. INTEGRAL) AS PER SD-203B AT ALL STREET/LANE INTERSECTION RADII
 - REMOVE AND REPLACE EXISTING CATCHBASIN / MANHOLE FRAME AND COVER
 - ADJUST EXISTING WATERMAIN VALVE BOX TO GRADE
 - REPAIR 1.5m OF 250mm SEWER SERVICE LEAD
 - REMOVE AND REPLACE EXISTING CATCHBASIN (SD-025) AND CONNECT TO EXISTING LEAD
 - ADJUST TRAFFIC SIGNALS PIT
 - ADJUST UTILITY MANHOLE FRAME REINFORCE ISOLATION WITH 15M BARS FOR ISOLATIONS IN ROADWAY AND 10M BARS FOR ISOLATIONS IN SIDEWALK
 - EXISTING TRAFFIC SIGNALS POLES TO BE RELOCATED (REFER TO SIGNALS DRAWINGS FOR ADDITIONAL DETAILS)
 - REGRADE EXISTING PAVERS
 - ADJUST EXISTING UTILITY BOX
 - PLACE RAKED ASPHALT IN CENTER MEDIAN
 - CONTRACT ADMINISTRATOR TO DETERMINE LOCATIONS FOR INSTALLATION OF PAVEMENT REPAIR FABRIC PRIOR TO ASPHALT PAVING



PLAN
Scale 1:250

ENGINEERS GEOSCIENTISTS MANITOBA
Certificate of Authorization
AECOM Canada Ltd.
No. 4671 Date: _____

METRIC
WHOLE NUMBERS INDICATE MILLIMETRES
DECIMALIZED NUMBERS INDICATE METRES

150 mm W.M.	150 mm W.M.	HYDRO	PROFILE
◇	◆	M.T.S.	WEST GUTTER
⊕	⊙	CONCRETE	EAST GUTTER
⊕	⊙	ASPHALT	N/W PROPERTY LINE
⊕	⊙	PROPERTY LINE	S/E PROPERTY LINE
⊕	⊙	SURVEY BAR	
⊕	⊙	ELEVATION (35.750)	
⊕	⊙	TREE	
⊕	⊙	SIDEWALK RAMP	
⊕	⊙	CONCRETE SIDEWALK	
⊕	⊙	FENCE	

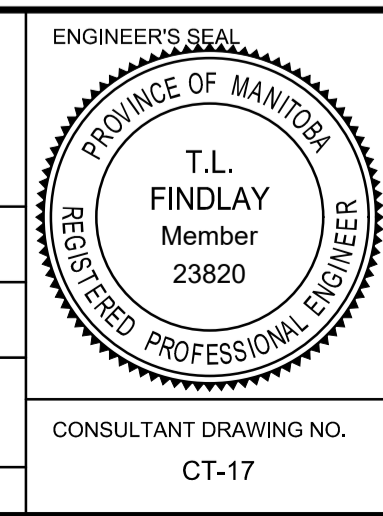
LOCATION APPROVED UNDERGROUND STRUCTURES

SUPV. U/G STRUCTURES COMMITTEE DATE _____

NOTE:
LOCATION OF UNDERGROUND STRUCTURES AS SHOWN ARE BASED ON THE BEST INFORMATION AVAILABLE. BUT NO GUARANTEE IS GIVEN THAT ALL EXISTING UTILITIES ARE SHOWN OR THAT THE GIVEN LOCATIONS ARE EXACT. CONFIRMATION OF EXISTENCE AND EXACT LOCATION OF ALL SERVICES MUST BE OBTAINED FROM THE INDIVIDUAL UTILITIES BEFORE PROCEEDING WITH CONSTRUCTION.

B.M.	tbm	South East Corner of Smith Avenue & Broadway, property line, top of 1" x 1" iron bar
ELEV.	231.968	

DESIGNED BY	BC	CHECKED BY	TLF
DRAWN BY	JT	APPROVED BY	TLF
HOR. SCALE:	AS SHOWN	RELEASED FOR CONSTRUCTION BY:	
VERTICAL:			
NO.	REVISIONS	DATE	BY
0	ISSUED FOR TENDER	2020/10/30	TLF
A	ISSUED FOR REVIEW	2020/10/23	TLF
DATE	2020/05/06	DATE	



THE CITY OF WINNIPEG
PUBLIC WORKS DEPARTMENT
ENGINEERING DIVISION

DOWNTOWN PAVEMENT RENEWAL PROJECT
2021 CONSTRUCTION

PLAN/PROFILE GRADING PLAN
DONALD STREET
STATION 0+285 TO STATION 0+395

CITY DRAWING NUMBER P-3535-17
SHEET 17 OF 30

CONSULTANT DRAWING NO. CT-17