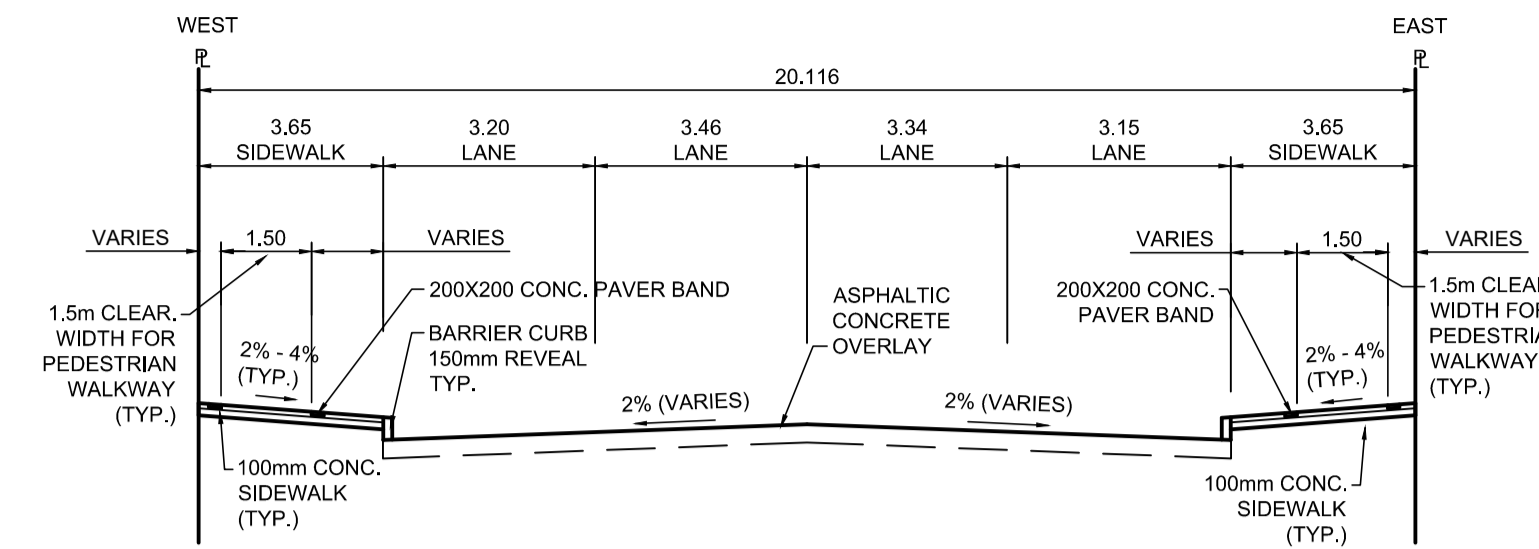


**PROFILE**  
Scale H=1:250 V=1:10



**TYPICAL SECTION**  
Scale NTS

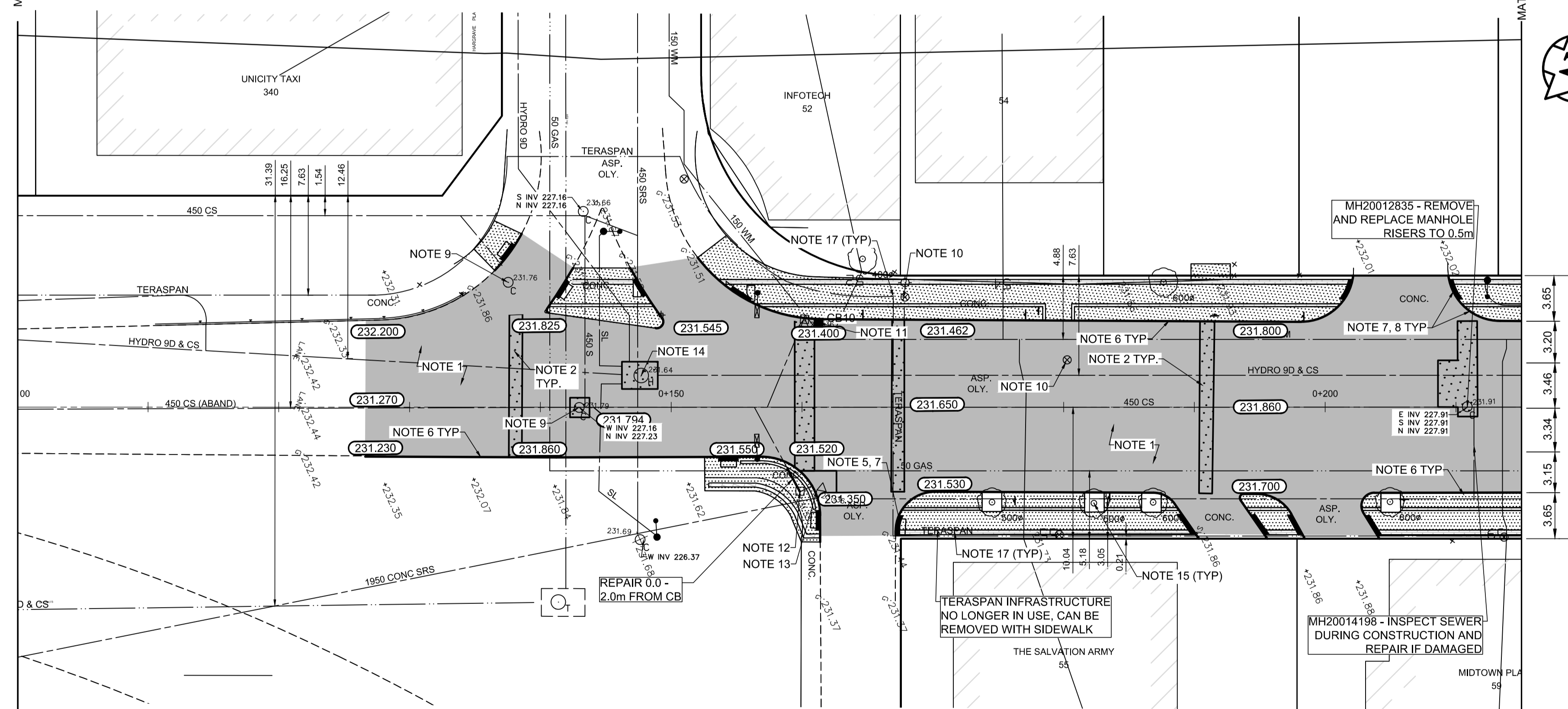
ITEM	RIM ELEV.	Sta	INVERT					CONNECTION	LEAD	FLOW RESTRICTOR
			EAST	WEST	NORTH	SOUTH	V.RISER			
CB10	231.400W	0+161	230.070					450 CS	14.0 m-2500 @ 2% Min	150mm

**REFERENCE NOTES**

- A. PAVEMENT DIMENSIONS ARE TO BACK OF CURB
- B. BASELINE IS CENTRELINE OF RIGHT-OF-WAY
- C. PROPERTY LINES OBTAINED FROM THE CITY OF WINNIPEG L.B.I.S., AND SCALE FACTOR WAS NOT APPLIED
- D. REFER TO AECOM FIELD BOOK NO. 5062 - 5069, 5072
- E. CATCH BASIN CONNECTIONS TO SEWER DESIGNED TO MAINTAIN PRE-CONSTRUCTION CAPACITY BY CATCH BASIN LEAD RESTRICTION AS INDICATED ON THE DRAWINGS. ADDITIONAL OR MODIFIED CONNECTIONS TO THE SEWER SYSTEM BEYOND THOSE INDICATED ON THE DRAWINGS REQUIRE REVIEW AND WRITTEN APPROVAL BY THE CONTRACT ADMINISTRATOR.

**CONSTRUCTION NOTES**

1. PAVEMENT EXISTING ASPHALT AND CONSTRUCT NEW ASPHALTIC PAVEMENT OVERLAY TYPE 1A (AVERAGE THICKNESS 85mm)
2. REMOVE EXISTING PAVEMENT AND CONSTRUCT NEW 230mm PLAIN DOWELLED CONCRETE PAVEMENT
3. REMOVE EXISTING CONCRETE SIDEWALK AND CONSTRUCT NEW 100mm SIDEWALK WITH BLOCKOUTS OF PAVING STONES FOR INDICATOR SURFACE (SEE CT-30)
4. PLACE ASPHALT PAVEMENT (TYPE 1A)
5. INSTALL NEW DETECTABLE SURFACE WARNING TILES
6. CONSTRUCT NEW BARRIER CURB (150mm REVEAL, SEPARATE)
7. CONSTRUCT NEW MONOLITHIC CURB RAMP (10mm HT. INTEGRAL)
8. CONSTRUCT NEW MODIFIED BARRIER CURB (180mm HT. INTEGRAL) AS PER SD-203B AT ALL STREET/LANE INTERSECTION RADII
9. ADJUST EXISTING CATCHBASIN / MANHOLE FRAME AND COVER
10. ADJUST EXISTING WATERMAIN VALVE BOX TO GRADE
11. REMOVE AND REPLACE EXISTING CATCHBASIN (SD-024), REPAIR 1.0m OF 250mm SEWER SERVICE AND CONNECT TO EXISTING SEWER SERVICE
12. ADJUST EXISTING FRAME AND COVER, AND REPAIR 2.0m OF 250mm SEWER SERVICE AND CONNECT TO EXISTING SEWER SERVICE
13. REMOVE AND REPLACE EXISTING GUTTER INLET WITH BARRIER CURB AND GUTTER FRAME AND COVER (AP-008 AND AP-009).
14. ADJUST UTILITY MANHOLE FRAME, REINFORCE ISOLATION WITH 15M BARS FOR ISOLATIONS IN ROADWAYS AND 10M BARS FOR ISOLATIONS IN SIDEWALK.
15. PROTECT EXISTING TREE DURING CONSTRUCTION, CONSTRUCT OPENING IN CONCRETE SIDEWALK AND PLACE CRUSH GRANITE AROUND EXISTING TREES.
16. CONTRACT ADMINISTRATOR TO DETERMINE LOCATIONS FOR INSTALLATIONS OF PAVEMENT REPAIR FABRIC PRIOR TO ASPHALT PAVING.
17. TERASPAN INFRASTRUCTURE NO LONGER IN USE, REMOVE DURING PAVEMENT OR SIDEWALK REMOVAL.



**PLAN**  
Scale 1:250

150 mm W.M.	150 mm W.M.	HYDRO	PROFILE
HYDRANT	HYDRANT	M.T.S.	WEST GUTTER
VALVE	VALVE	CONCRETE	EAST GUTTER
LAND DRAINAGE SEWER	300mm L.D.S.	ASPHALT	N/W PROPERTY LINE
WASTEWATER SEWER	250mm W.W.S.	PROPERTY LINE	S/E PROPERTY LINE
MANHOLE	MANHOLE	SURVEY BAR	
CATCH BASIN	CATCH BASIN	ELEVATION (35.750)	
CATCH PIT	CATCH PIT	TREE	
TRAFFIC SIGNAL POLE	TRAFFIC SIGNAL POLE	SIDEWALK RAMP	
STREET LIGHT	STREET LIGHT	CONCRETE SIDEWALK	
GAS	GAS	FENCE	
EXISTING	LEGEND - PLAN	PROPOSED	EXISTING
	LEGEND - PLAN	PROPOSED	EXISTING
	LEGEND - PROFILE	PROPOSED	EXISTING

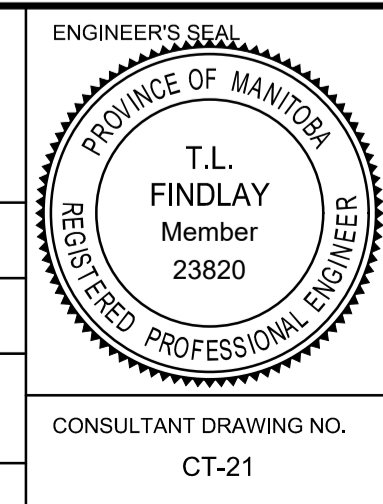
**LOCATION APPROVED UNDERGROUND STRUCTURES**

SUPV. U/G STRUCTURES COMMITTEE DATE

**NOTE:**  
LOCATION OF UNDERGROUND STRUCTURES AS SHOWN ARE BASED ON THE BEST INFORMATION AVAILABLE, BUT NO GUARANTEE IS GIVEN THAT ALL EXISTING UTILITIES ARE SHOWN OR THAT THE GIVEN LOCATIONS ARE EXACT. CONFIRMATION OF EXISTENCE AND EXACT LOCATION OF ALL SERVICES MUST BE OBTAINED FROM THE INDIVIDUAL UTILITIES BEFORE PROCEEDING WITH CONSTRUCTION.

B.M.	tbm	South East Corner of Smith Avenue & Broadway, property line, top of 1" x 1" iron bar
ELEV.	231.968	
NO.	REVISIONS	DATE BY
0	ISSUED FOR TENDER	2020/10/30 TLF
A	ISSUED FOR REVIEW	2020/10/23 TLF

<b>AECOM</b>	
DESIGNED BY: BC	CHECKED BY: TLF
DRAWN BY: JT	APPROVED BY: TLF
HOR. SCALE: AS SHOWN	RELEASED FOR CONSTRUCTION BY:
VERTICAL:	
DATE: 2020/05/06	DATE:



**ENGINEERS GEOSCIENTISTS MANITOBA**  
Certificate of Authorization  
AECOM Canada Ltd.  
No. 4671 Date: \_\_\_\_\_

**METRIC**  
WHOLE NUMBERS INDICATE MILLIMETRES  
DECIMALIZED NUMBERS INDICATE METRES

**THE CITY OF WINNIPEG**  
PUBLIC WORKS DEPARTMENT  
ENGINEERING DIVISION

DOWNTOWN PAVEMENT RENEWAL PROJECT  
2021 CONSTRUCTION

PLAN/PROFILE GRADING PLAN  
DONALD STREET  
MIDTOWN BRIDGE TO STATION, 0+215

CITY DRAWING NUMBER P-3535-21  
SHEET 21 OF 30