

Welcome!

Thank you for attending today's event for the Route 90 Improvements Study.

The following resources are available to you:

1

An overview map of the entire project. Note that the map is still draft and will continue to be refined as the project progresses.

2

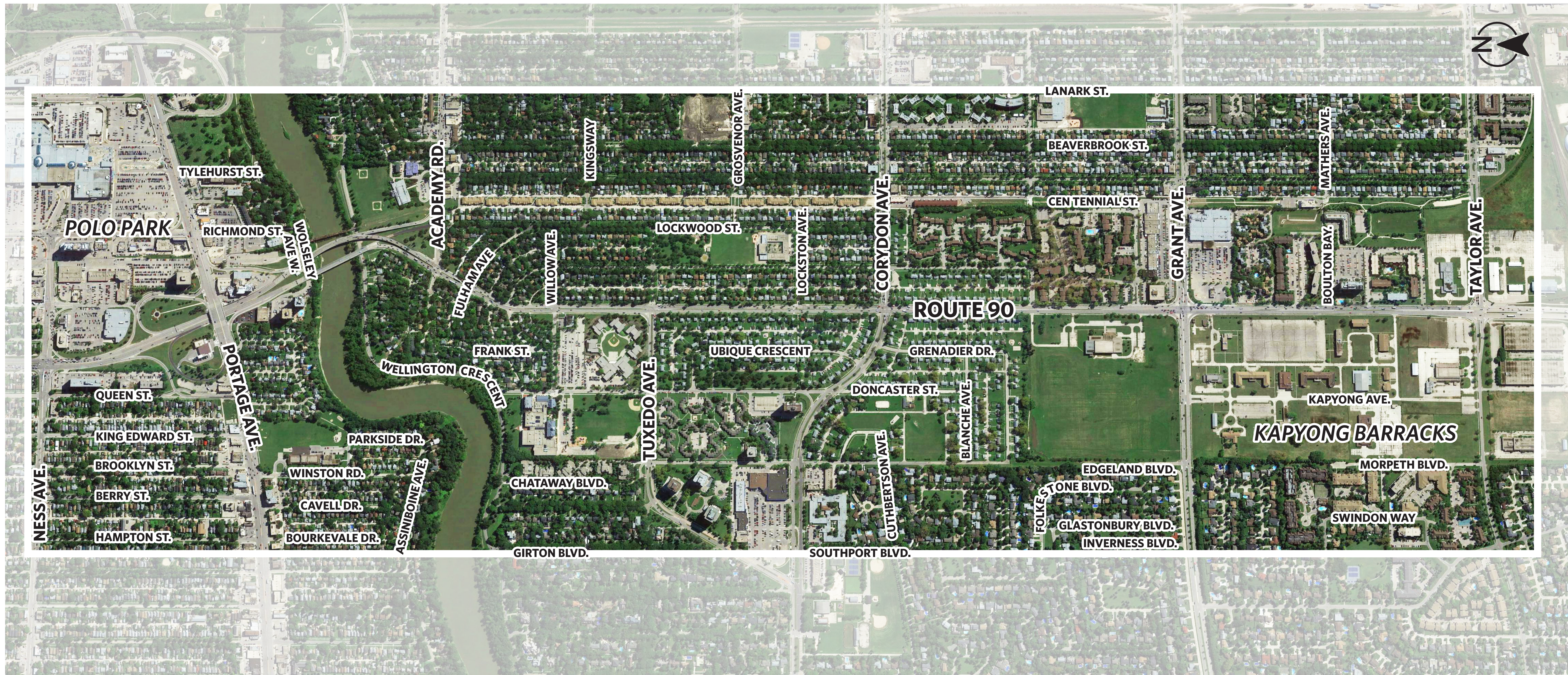
Take home information sheets providing answers to commonly asked questions and information about opportunities to participate, like our short online survey.

3

Knowledgeable project representatives, who will be happy to answer questions about the project.

Learn more about the project and stay up-to-date on the latest information at winnipeg.ca/route90

Place a sticker on the map to indicate where you live or work.



Frequently Asked Questions

Why does Route 90 need to be widened?

Route 90 links major residential, employment, and commercial areas in the southwest and northwest quadrants of Winnipeg. Upgrades will address current and future traffic volumes, new development and future redevelopment, as well as the needs of pedestrians, cyclists, and transit users.

What part of Route 90 are we talking about?

The study area is between Ness Avenue and Taylor Avenue. It includes the St. James bridges, the Portage Avenue interchange, Academy Road intersection and all ramps associated with them.

What changes can we expect?

The design calls for three through lanes each way on Route 90, for a total of 6 lanes along the corridor. The project will also consider improvements at key intersections including Grant, Taylor, Corydon and Tuxedo, and the Portage Avenue interchange. Other considerations include transit and pedestrian/cycling improvements and land use development potential along the corridor. Placemaking improvements such as landscaping, green spaces and public art will be considered to integrate the route into the surrounding area.

When will construction on Route 90 begin?

Construction on Route 90 would only begin after preliminary design is complete and City Council has approved the project and funds for detailed design and construction.

Will pedestrians and cyclists be able to use the route?

The design will accommodate all users, including vehicles, pedestrians, cyclists and transit. Dedicated pedestrian and cycling improvements may include alternative ways to cross Route 90, and allow for better connections to existing corridors to the downtown and recreational sites such as FortWhyte Alive and Assiniboine Park. A pedestrian overpass of Route 90 and street-level crossing are both under consideration at Lockston Avenue.

Will my property be affected?

Improving Route 90 includes balancing the needs of neighbourhood residents with improving capacity for vehicles, transit, pedestrians, and cyclists. The City will consider property impacts along the corridor as part of the design process, which includes privately owned and government properties. Potentially affected property owners will be kept informed throughout the project.

Questions about the project? Post them here!
