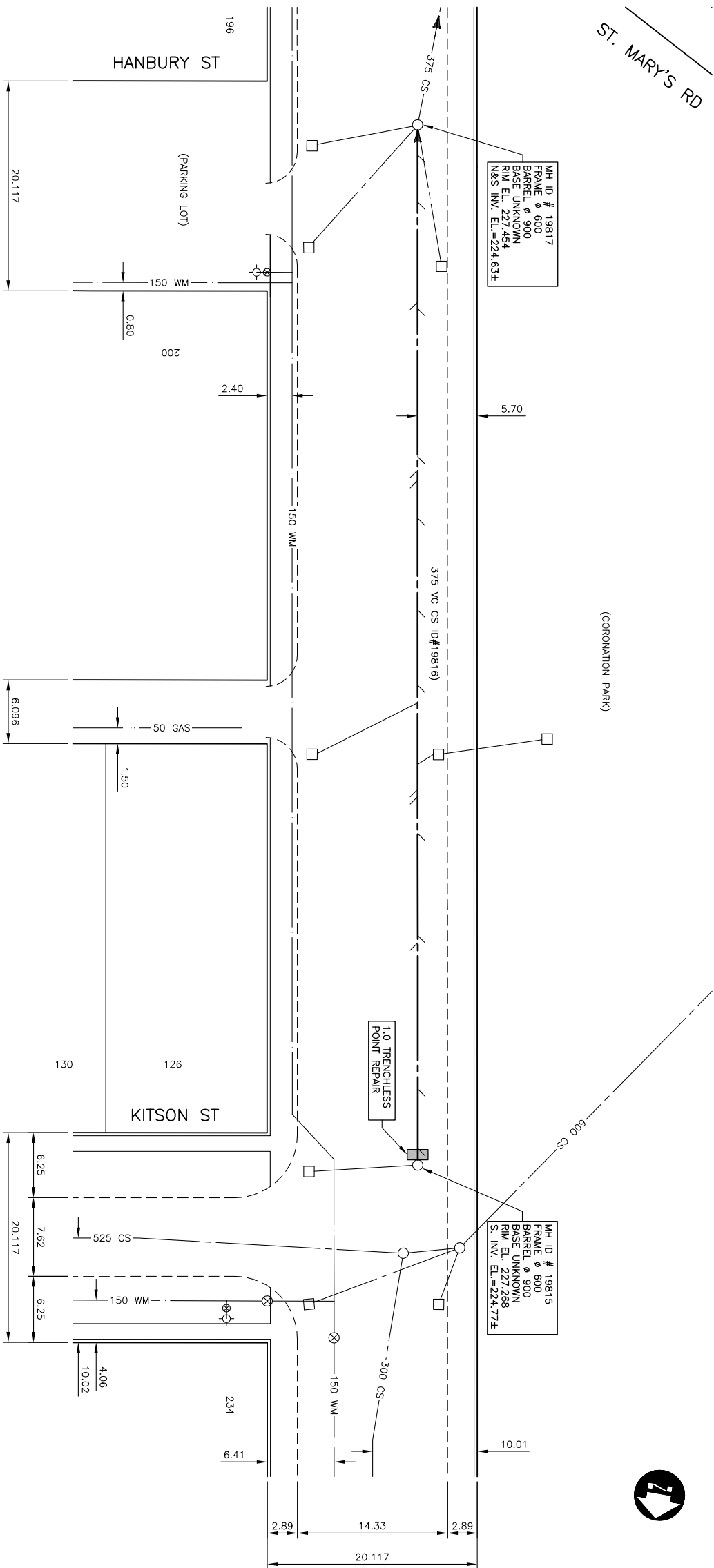


SEWER SERVICE INFORMATION (ID #19816) \*

(MH ID #19815)

1.6 N	SERVICE CONNECTION W
7.3 N	SERVICE CONNECTION W
21.3 N	SERVICE CONNECTION E
22.0 N	SERVICE CONNECTION W
31.8 N	SERVICE CONNECTION W
35.3 N	SERVICE CONNECTION E
36.0 N	SERVICE CONNECTION E
38.4 N	SERVICE CONNECTION W
44.3 N	SERVICE CONNECTION E
46.0 N	SERVICE CONNECTION W
53.2 N	SERVICE CONNECTION W
62.0 N	SERVICE CONNECTION W
65.6 N	SERVICE CONNECTION E
66.6 N	SERVICE CONNECTION E
67.9 N	SERVICE CONNECTION W
82.1 N	SERVICE CONNECTION W
82.7 N	SERVICE CONNECTION E
89.3 N	SERVICE CONNECTION (12 O'CLOCK)
92.3 N	SERVICE CONNECTION W
96.8 N	SERVICE CONNECTION W

\* INFORMATION FROM SEWER VIDEO INSPECTION



**TACHE AVENUE**

**WARNING**

IF POWER EQUIPMENT OR EXPLOSIVES ARE TO BE USED FOR EXCAVATION ON THIS PROJECT THE CONTRACTOR MUST:

1. NOTIFY THE GAS COMPANY OF THE PROPOSED LOCATION OF EXCAVATION.
2. TAKE PRECAUTION TO AVOID DAMAGE TO GAS COMPANY INSTALLATIONS SEE PROVINCIAL REGULATION 210/72 FOR DETAILS

**METRIC**  
WHOLE NUMBERS INDICATE MILLIMETRES  
DECIMALIZED NUMBERS INDICATE METRES

EXISTING	LEGEND-PLAN	PROPOSED	EXISTING	LEGEND-PLAN	PROPOSED	EXISTING	LEGEND-PROFILE	PROPOSED
150 mm W.M.	WATERMAIN	150 mm W.M.	HYDRO	150 mm W.M.	WATERMAIN	150 mm W.M.	WATERMAIN	150 mm W.M.
300 mm L.O.S.	LAND DRAINAGE SEWER	300 mm L.O.S.	M.T.S.	300 mm L.O.S.	LAND DRAINAGE SEWER	300 mm L.O.S.	HYDRANT VALVE	300 mm L.O.S.
250 mm W.W.S.	WASTE WATER SEWER	250 mm W.W.S.	CONCRETE ASPHALT	250 mm W.W.S.	WASTE WATER SEWER	250 mm W.W.S.	PROPERTY LINE	250 mm W.W.S.
○	MANHOLE	●	SURVEY BAR	○	WASTE WATER SEWER	○	WASTE WATER SEWER	○
□	CATCH BASIN	▲	SURVEY VALVE	□	WASTE WATER SEWER	□	WASTE WATER SEWER	□
▽	CURB INLET	■	I.P.S.	▽	WASTE WATER SEWER	▽	WASTE WATER SEWER	▽
—	JUNCTIONS	—	SURVEY VALVE	—	WASTE WATER SEWER	—	WASTE WATER SEWER	—
—	CULVERT	—	BUILDING	—	WASTE WATER SEWER	—	NORTH/WEST GUTTER	—
—	GAS	—		—	WASTE WATER SEWER	—	SOUTH/EAST GUTTER	—

**UNDERGROUND STRUCTURES**

NOTE: LOCATION OF UNDERGROUND STRUCTURES AS SHOWN ON THIS DRAWING IS BASED ON THE ASSET REGISTER INFORMATION THAT THE EXISTING UTILITIES ARE SHOWN ON THE ASSET REGISTER. THE LOCATION OF EXISTING UTILITIES IS NOT GUARANTEED AND THE CONTRACTOR SHALL VERIFY THE LOCATION OF UTILITIES PRIOR TO EXCAVATION.

DATE: \_\_\_\_\_

NO.	REVISIONS	DATE	BY	DESIGNED	DATE
2	ISSUED FOR TENDER	04/29/04 P.M.K.	J.K.M.	J.K.M.	APRIL 2004
1	SUBMITTED TO W&M FOR REVIEW	04/10/04 P.M.K.	S.C.C.	S.C.C.	APRIL 2004

**DILLON CONSULTING**

REGISTERED PROFESSIONAL ENGINEER  
P.M.K. 04/26/04

CONSULTANT DRAWING NO. 043031-10

**THE CITY OF WINNIPEG WATER AND WASTE DEPARTMENT**

2004 COMBINED SEWER RENEWALS  
BY CIPP LINING, CONTRACT 9  
TACHE AVENUE  
MH AT KITSON ST (S. OF CL)  
TO MH AT HANBURY ST

QTY DRAWING NUMBER 05408  
SHEET 10 OF 15  
BID OPPORTUNITY No. 238-2004