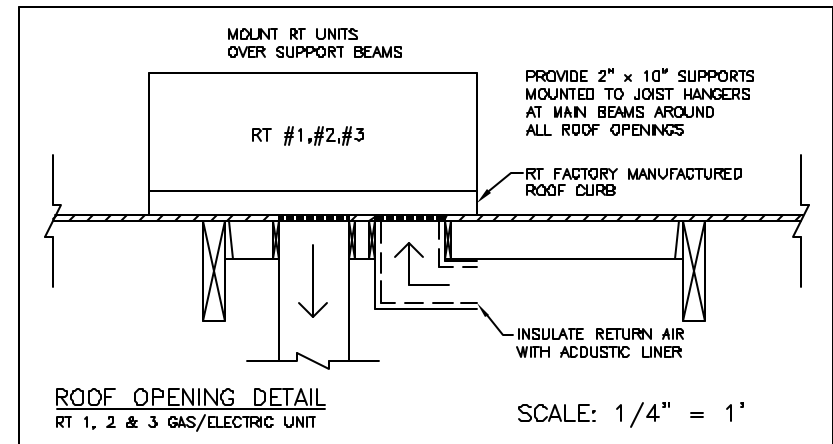


ROOF MOUNTED EXHAUST FAN #8  
 INSULATED PLENUM 10" x 10" THROUGH ROOF  
 RETURN AIR GRILLES E.H. PRICE #530 6" x 6"

EXISTING OUTDOOR LOUVRE TO REMAIN

REMOVE EXISTING FAN & REPLACE WITH NEW EF #7



	NO OPPORTUNITY: <b># 410-2004</b>		<b>THE CITY OF WINNIPEG</b>	
	PROJECT: <b>ZOO ANIMAL HOSPITAL BLDG # 67</b>		<b>PUBLIC WORKS DEPARTMENT</b> BUILDING SERVICES DIVISION 100 MAIN STREET, MAIN FLOOR WPG, MB. R3C 1A4	
	NEW DUCTWORK LAYOUT	PROJECT NO. SCALE 1/8" = 1' DRAWING NO. M - 2 R 1	DESIGN BY E. JOHNSTON DATE 23 08 04	CHECKED BY N. S. REV.