

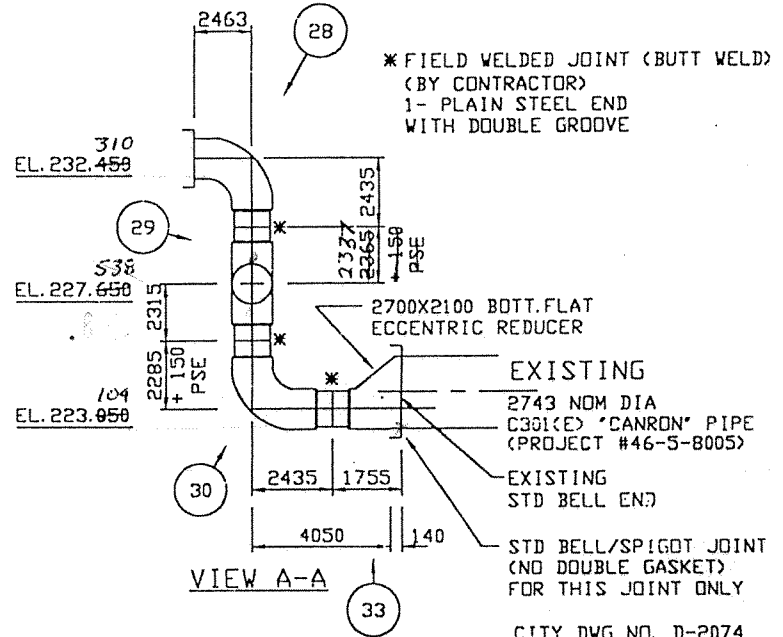
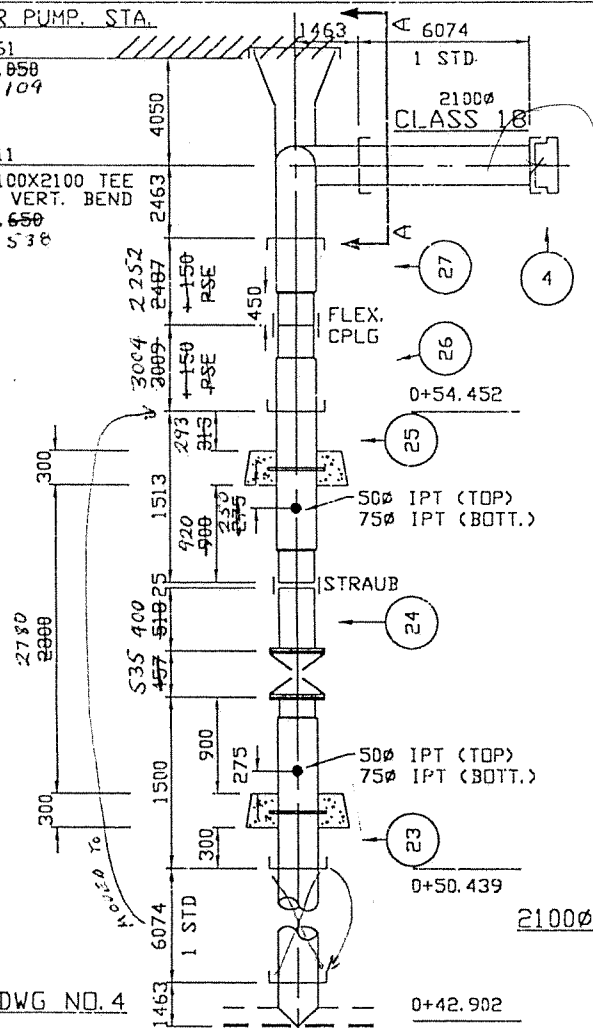
DEACON BOOSTER PUMP STA.

0+66.461
EL. 223.058
104

0+62.411
2100X2100X2100 TEE
2X 90° VERT. BEND
EL. 227.650
538

LAYING DIRECTION

VALVE CHAMB. No. 301



* FIELD WELDED JOINT (BUTT WELD)
(BY CONTRACTOR)
1- PLAIN STEEL END
WITH DOUBLE GROOVE

2700X2100 BOTT. FLAT
ECCENTRIC REDUCER

EXISTING
2743 NOM DIA
C301(E) "CANRON" PIPE
(PROJECT #46-5-8005)

EXISTING
STD BELL END

STD BELL/SPIGOT JOINT
(NO DOUBLE GASKET)
FOR THIS JOINT ONLY

CITY DWG NO. D-2074

NOTES: SEE DRAWING NO. 1

SEE DWG NO. 4

QTY	ITEM NO.	DESCRIPTION	LENGTH	ENDS	REFERENCE
1	XX	2100 STRAUB FLEXIBLE CPLG 3LS, SS STRIP INSERT			
1	XX	2100 FLEXIBLE BAKER CPLG, GALVANISED 12" MIDDLE RING, 316SS BOLTS & NUTS			
1	33	2700X2100 ECCENTRIC REDUCER	1755	S/PSE	C-33
1	30	2100 90° ELBOW WITH 150 PSE EXTRA	2435	PSE/PSE	C-30
1	29	2100X2100X2100 TEE G/W 150-PSE-EXTRA	4652	4830	PSE/PSE/DB C-29
1	28	2100 90° ELBOW	2435	2450	PSE/DB C-28
1	27	2100 CLOSURE PIECE WITH 150-PSE-EXTRA	2252	2637	DS/PSE C-27
		2100 CLOSURE PIECE WITH 150-PSE-EXTRA	3009	3150	DS/PSE C-26
		2100 WALL PIECE C/W WALL FLG + 75 IPT + 50 IPT	1500	1500	PSE/DB C-25
		2100 ADAPTOR (FLANGE CLASS "B")	400	518	FLG/PSE
		2100 WALL PIECE C/W WALL FLG + 75 IPT + 50 IPT	1500	DS/FLG	C-23
		2100 BULKHEAD	-	DS	C-4
		2100 STD C301(E) CLASS 18 (YELLOW STRIPE AT BELL END)	6061	DS/DB	D-1
		2100 STD C301(E) CLASS 18	6061	DS/DB	D-1

E	95/06/13	MK:25 SHORTENED BY 457mm	SZ
D	95/05/25	MK:25 LENGTHENED BY 457mm	SZ
C	95/05/12	MK:26 REV'D / MK:27 ADDED	SZ
B	95/05/08	MK:24, 26 REV'D / MK:27 DEL'D	SZ
A	95/04/24	AS NOTED	SZ
REV.	DATE	REVISION	BY

THIS DRAWING AND ALL TECHNICAL INFORMATION APPEARING HEREON ARE THE PROPERTY OF HYPRESCON INC. AND MUST BE KEPT IN CONFIDENCE BY THE RECIPIENT. THE SAME MAY NOT BE USED OR REPRODUCED EITHER IN WHOLE OR IN PART WITHOUT THE EXPRESS CONSENT OF HYPRESCON INC., WHICH RESERVES ALL RIGHTS OF COPYRIGHT.

HYPRESCON inc.

CITY OF WINNIPEG - P.D. 95-2
DEACON RESERVOIR EXPANSION - CELL 3 & CELL 4
NELSON RIVER CONSTR.

SCALE: NOT TO SCALE DATE: 95/03/29

DRAWN	CHECKED	APPROVED	PROJECT	DWG.	REV.
SZ			9007-95	5	

F-4131