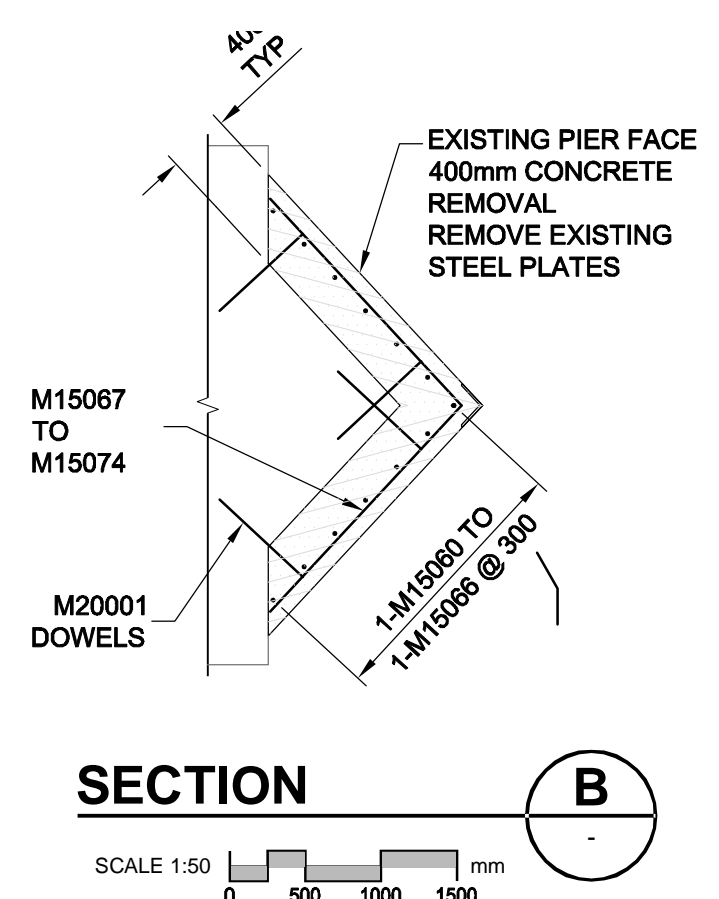


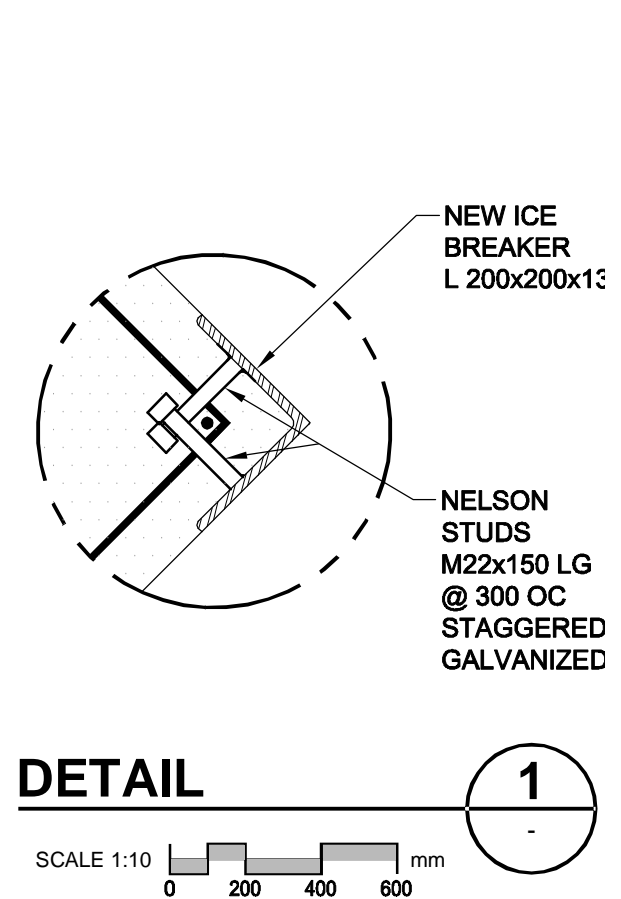
**SECTION A**

PIER #2  
PROPOSED CONCRETE REMOVAL, ENCASEMENT & REINFORCING DETAILS



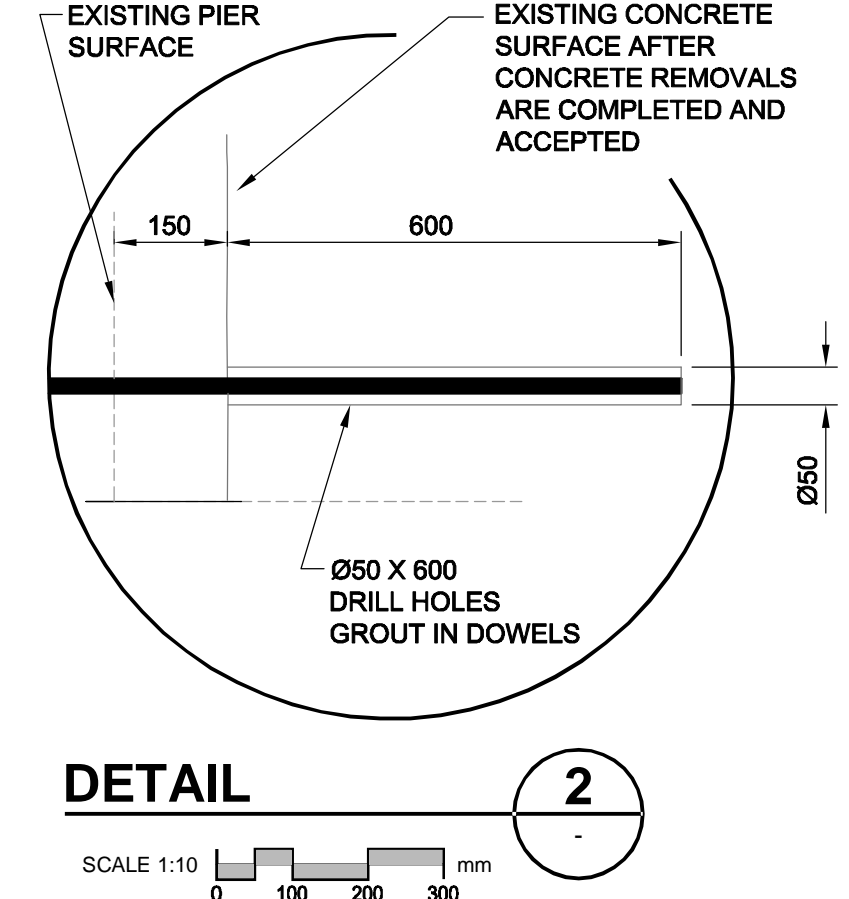
**SECTION B**

PIER #2 - LOWER SOUTH SIDE  
PROPOSED CONCRETE REMOVAL,  
ENCASEMENT & REINFORCING DETAILS



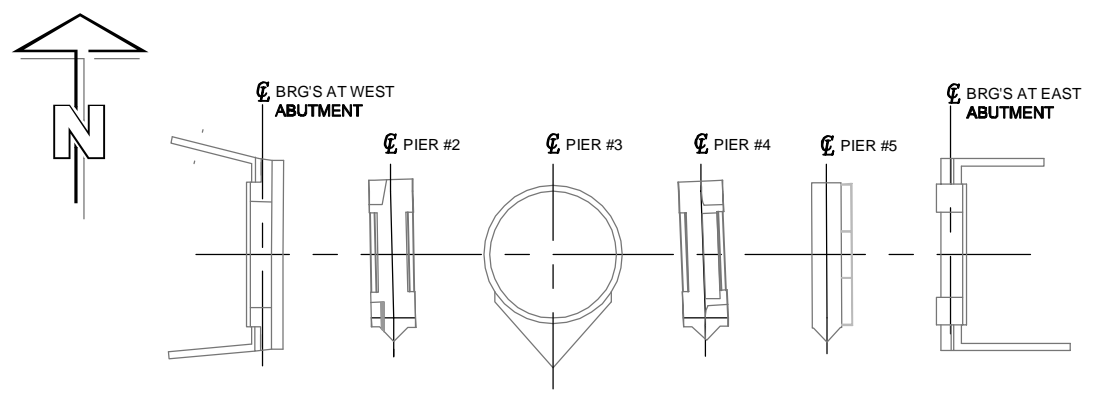
**DETAIL 1**

PIER #2  
NEW ICE BREAKER



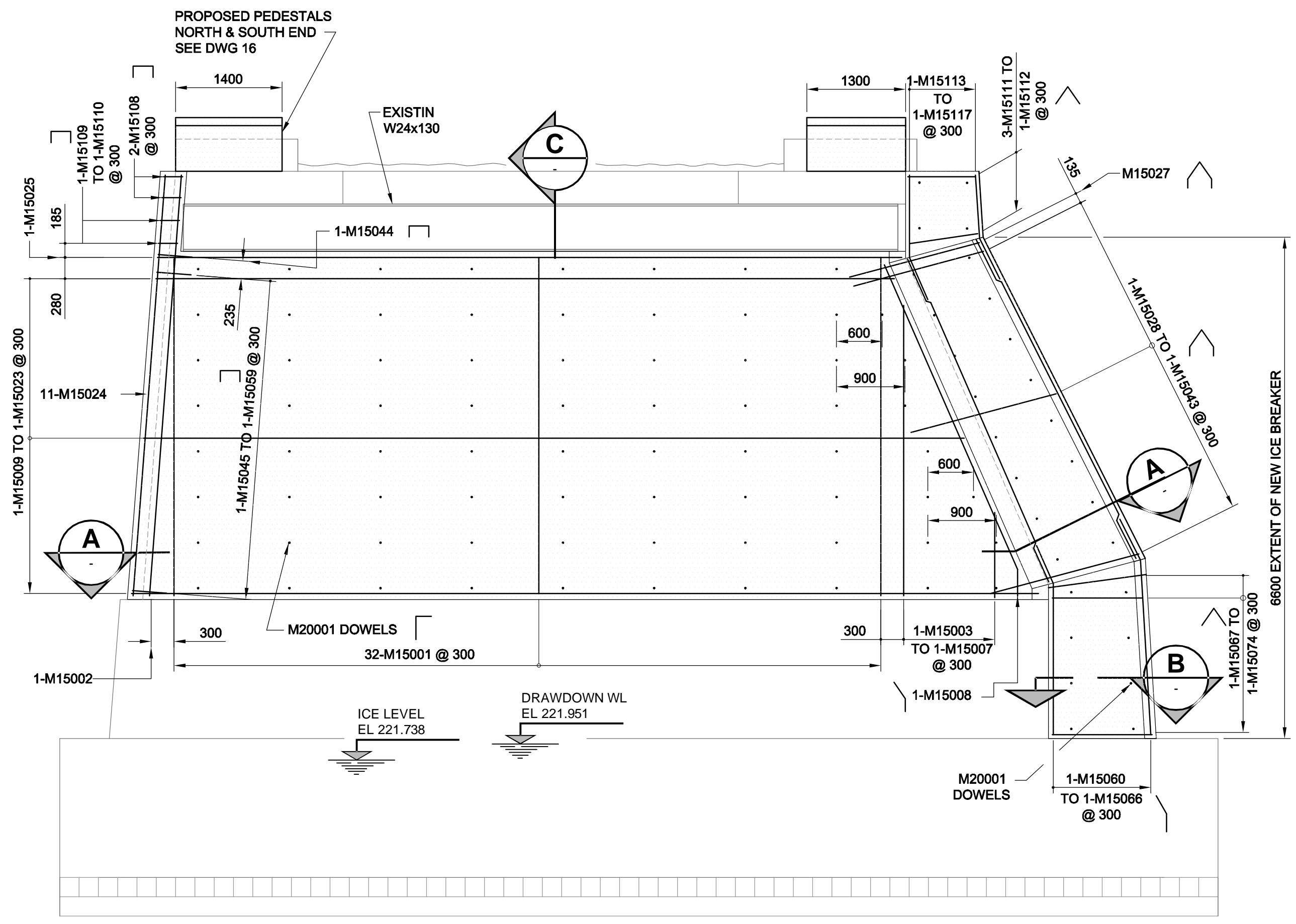
**DETAIL 2**

TYPICAL DOWEL INSTALLATION



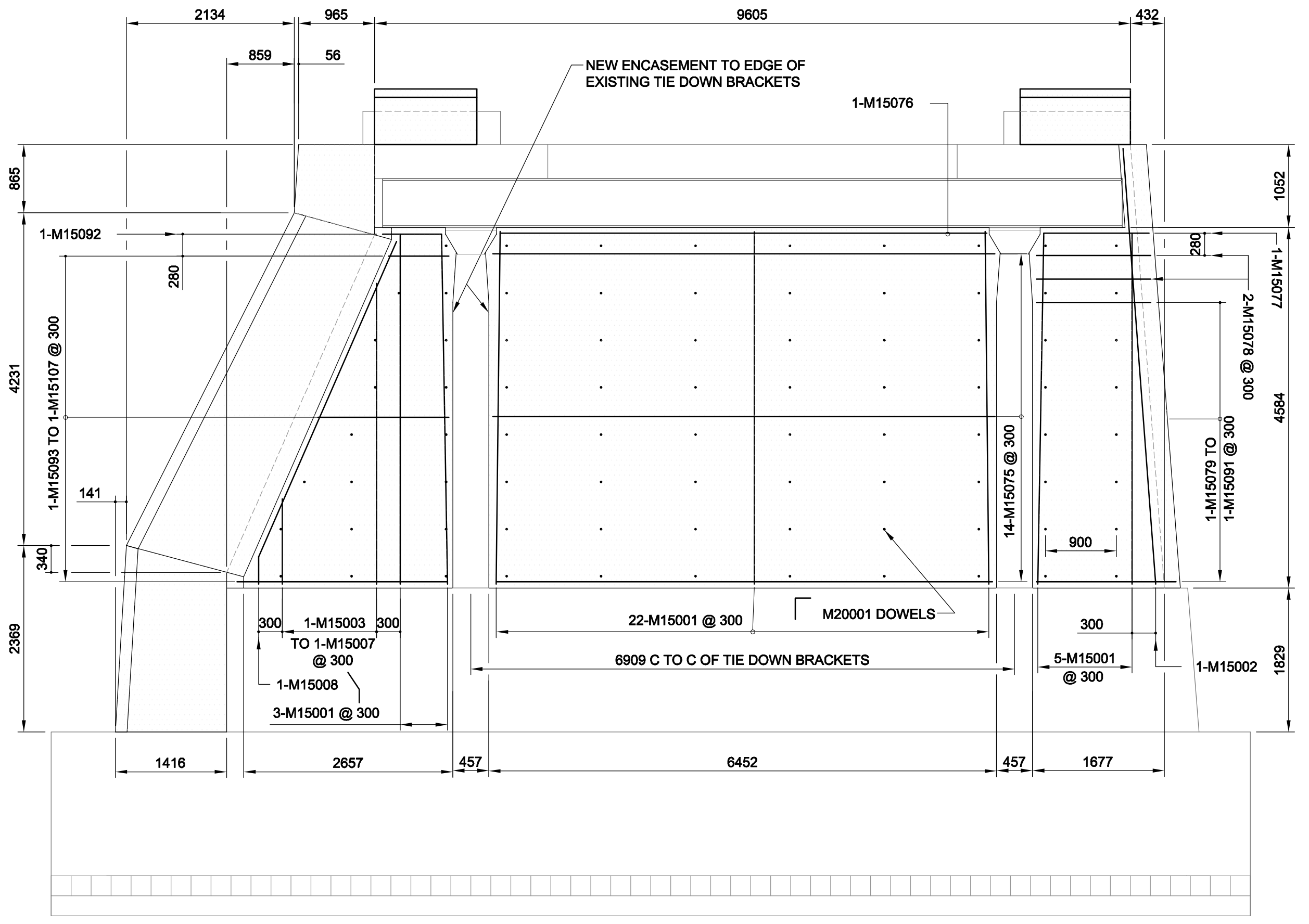
**KEY PLAN**

SCALE 1:500  
SUBSTRUCTURE - ABUTMENTS & PIERS



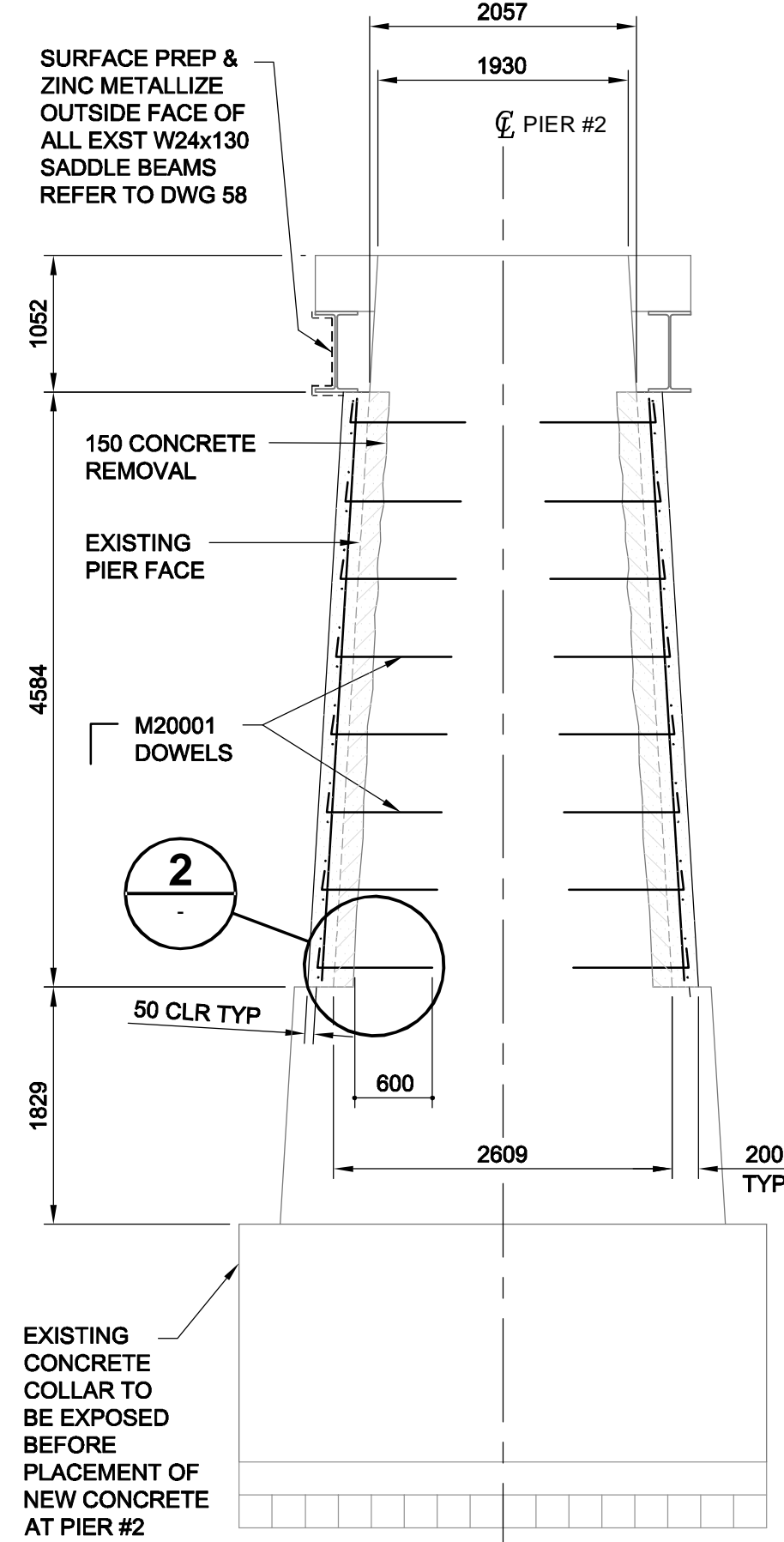
**PIER #2 WEST ELEVATION**

SCALE 1:50  
PROPOSED CONCRETE REMOVAL, ENCASEMENT & REINFORCING STEEL DETAILS



**PIER #2 EAST ELEVATION**

SCALE 1:50  
PROPOSED CONCRETE REMOVAL, ENCASEMENT & REINFORCING STEEL DETAILS.  
DETAILS THE SAME AS WEST SIDE NOT SHOWN FOR CLARITY.

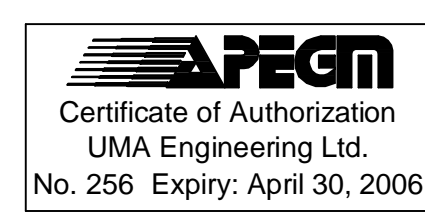


**SECTION C**

SCALE 1:50  
PIERS #4 & #5  
PROPOSED CONCRETE ENCASEMENT

**NOTE:**  
ALL DIMENSIONS SHOWN ON THE DRAWINGS ARE BASED ON AVAILABLE INFORMATION AND RECORD DRAWINGS. THE CONTRACTOR SHALL FIELD MEASURE AND VERIFY ALL DIMENSIONS PRIOR TO COMMENCING CONSTRUCTION OR PRIOR TO PREPARATION OF SHOP DRAWINGS. THE CONTRACTOR SHALL MAKE THE APPROPRIATE ADJUSTMENTS TO THE APPLICABLE DETAILS AND DIMENSIONS ACCEPTABLE TO THE CONTRACT ADMINISTRATOR. THE CONTRACTOR SHALL THEN FABRICATE AND CONSTRUCT THE WORKS IN ACCORDANCE WITH THE CORRECTED DIMENSIONS.

**METRIC**  
WHOLE NUMBERS INDICATE MILLIMETRES  
DECIMALIZED NUMBERS INDICATE METRES



<b>UMA Engineering Ltd.</b> *Consulting *Engineering *Construction *Management Services		ENGINEER'S SEAL	
DESIGNED BY: BLL	CHECKED BY: SBB	REVISION 0, ISSUED FOR CONSTRUCTION WAS SEALED BY B.L. LAU AND DATED 05/07/06	
DRAWN BY: DL	APPROVED BY:	CONSULTANT DRAWING NO. 15 0265-376-00	
HOR. SCALE: AS SHOWN	VERT. SCALE: AS SHOWN	ACCEPTED BY:	
DATE:	DATE:	DATE:	

**THE CITY OF WINNIPEG PUBLIC WORKS DEPARTMENT**

**REDWOOD BRIDGE REHABILITATIVE MAINTENANCE AND RELATED WORKS**

**PIER #2 CONCRETE REMOVAL, ENCASEMENT AND REINFORCING STEEL DETAILS**

CITY DRAWING NUMBER: B113-05-15  
SHEET 15 OF 74  
REV 15

**NOTES:**  
1. REFER TO "GENERAL NOTES" ON DRAWING 17.