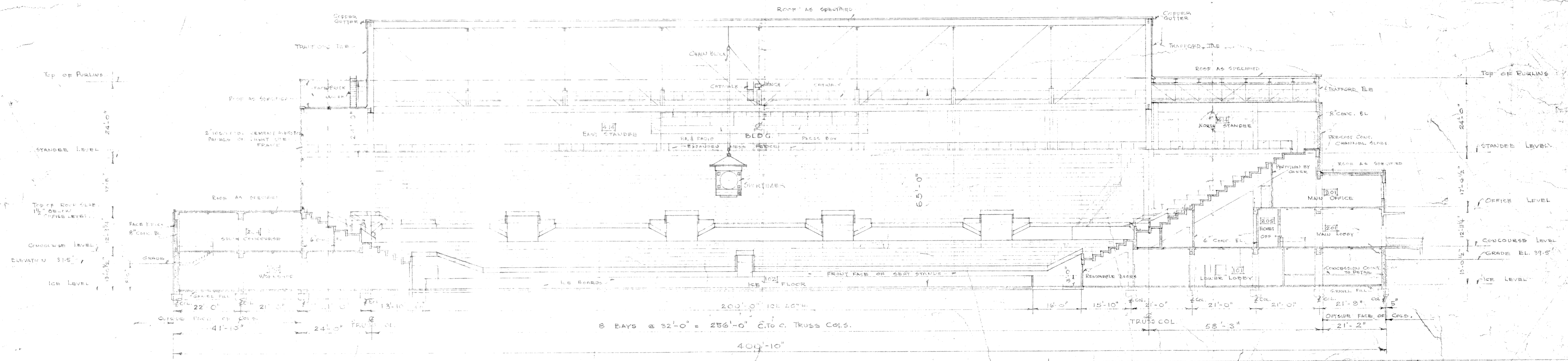


Cross Section - Looking North

Cross Section - Looking North



LONGITUDINAL SECTION

REVISIONS 1. REMOVE EAST & WEST GALLERY'S 1/8" R.M.P. CHANGE H.H.G. CONCRETE TO TRAFFORD TILE 1/4" R.M.P. 2. OMIT FURRED ACCOUNTS TILES BUILDING LOBBY 1/4" R.M.P. 3. ADDED PURLIN CLOSURE 1/4" R.M.P. 4. SPARTIMER 1/4" R.M.P.		WINNIPEG ENTERPRISES CORP. ARENA WOLEVER AVENUE.	BUILDING SECTIONS SCALE: 1/4" = 1'-0" DATE: 15 SEPT 54 DRAWING NUMBER: 1-08
APPROVED FOR ARCHT.		PROPOSED BY ARCHT. CHECKED BY ARCHT.	SCALE: 1/4" = 1'-0" DATE: 15 SEPT 54 DRAWING NUMBER: 1-08