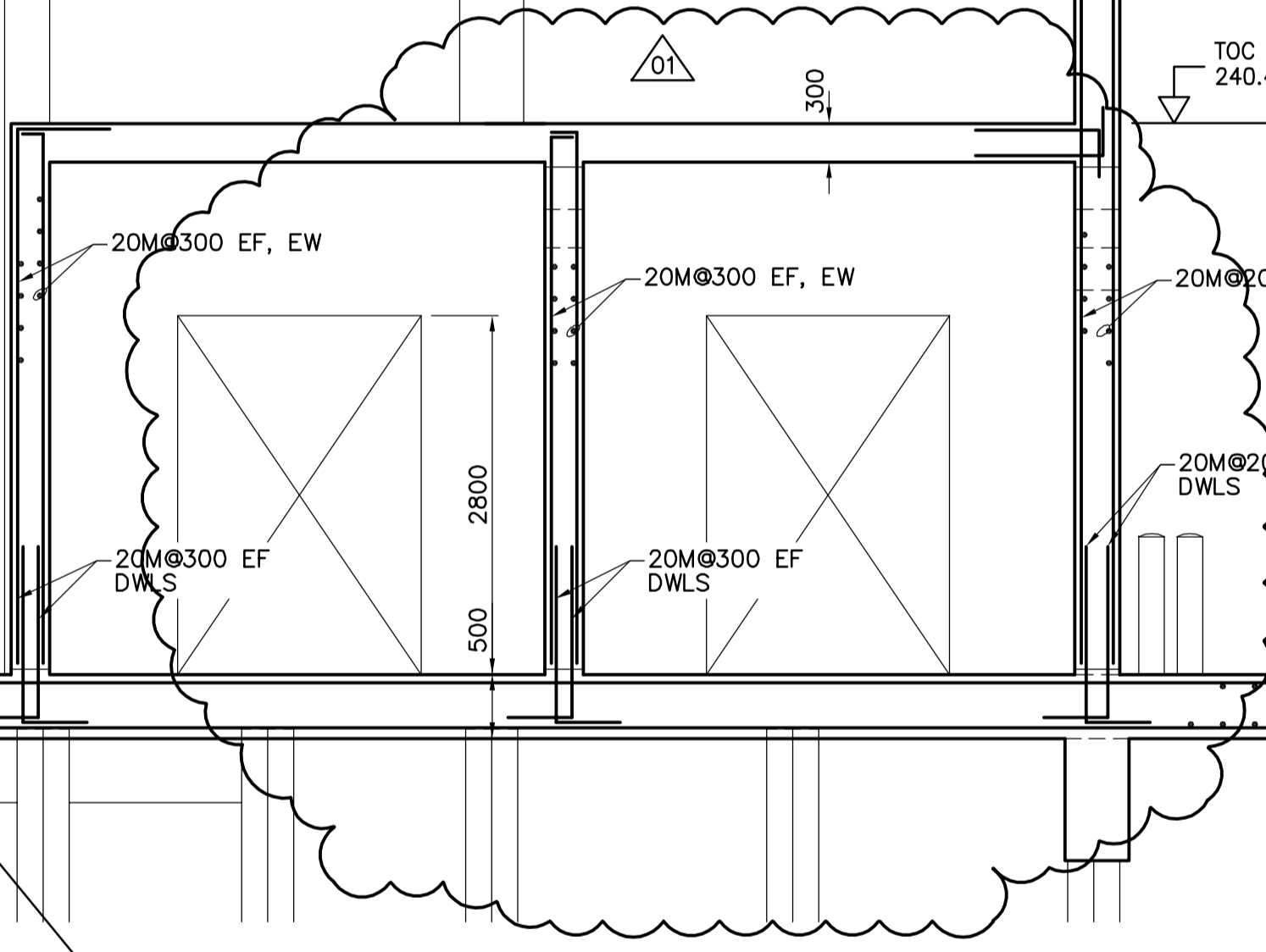
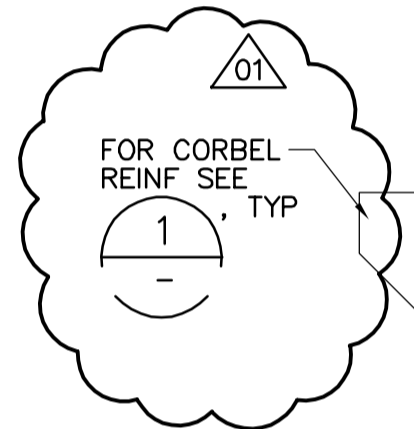


NOTE:
1. CORBEL WIDTH TO MATCH COLUMN WIDTH WHERE LOCATED AT COLUMN. COLUMN WIDTH TO BE 500mm WIDE ELSEWHERE.

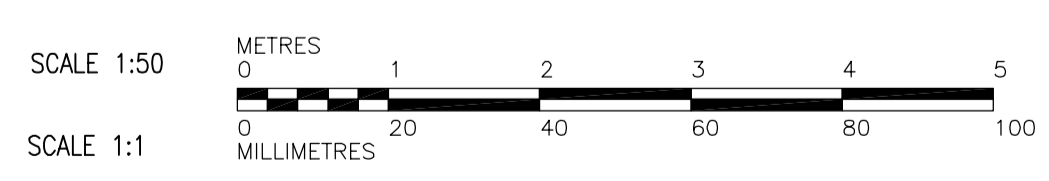
CORBEL REINFORCING

1 DETAIL
N.T.S.



NOTE:
1. BACKGROUND HIDDEN LINES REVISED OR SHOWN FOR CLARITY.

E SECTION
WC-S0111 1:50
WC-S0121, WC-S0131
WC-F0105



 Certificate of Authorization CH2M HILL Canada Ltd. No. 1441 Expiry: April 30, 2006	B.M. ELEV.	 Frederickson Cooper ARCHITECTS	 A Tetra International Ltd. Company	ENGINEER'S SEAL	 THE CITY OF WINNIPEG WATER AND WASTE DEPARTMENT ENGINEERING DIVISION WATER TREATMENT PLANT CHEMICAL FEED SYSTEMS FOUNDATIONS AND CONCRETE STRUCTURES STRUCTURAL CHEMICAL AREA SECTION	CITY FILE NUMBER
	DESIGNED BY EL			CHECKED BY AP		ORIGINAL SIGNED BY D. KRUGER
	DRAWN BY RL/DJ	APPROVED BY DJT	2006/02/06	CITY DRAWING NUMBER		
	SCALE: 1:50	RELEASED FOR CONSTRUCTION BY: R. SOROKOWSKI	CONSULTANT DRAWING NO. WC-S0206	1-0601C-A-80206-001-01D		
NO. REVISIONS	DATE BY	DATE 2005/07/29	DATE 2006/02/08			