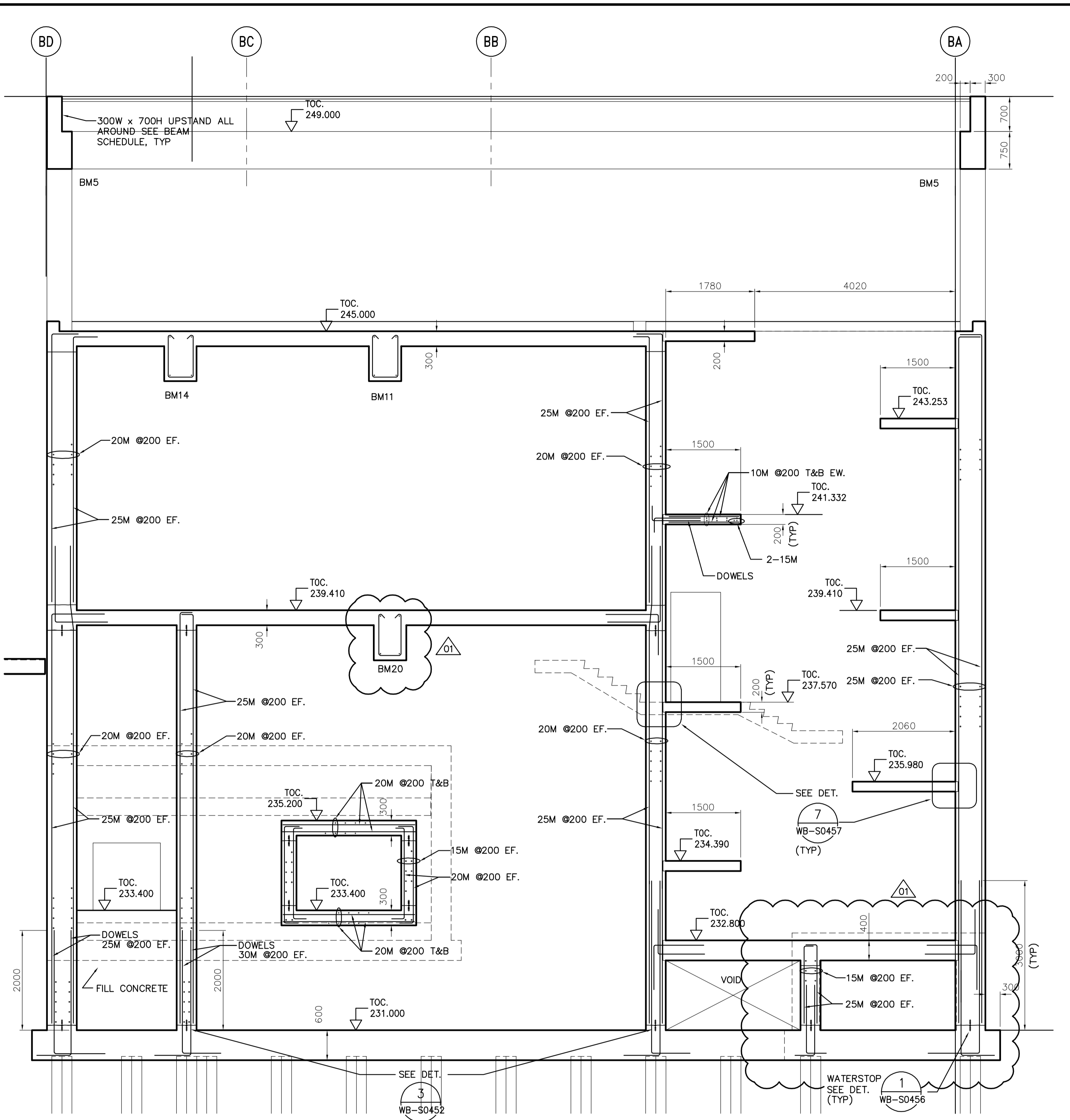


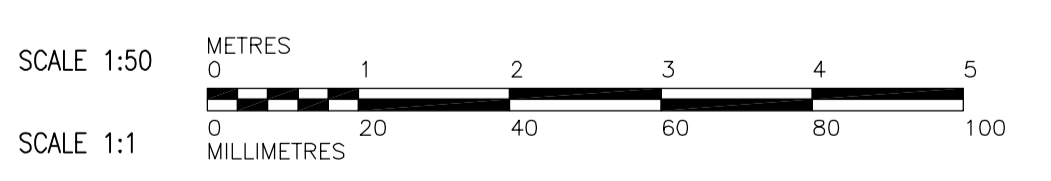
0 SECTION
WF-S0101 1:50



E SECTION
WF-S0101 1:50

- NOTES:**
- SEE PLANS FOR SLAB REINFORCEMENT.
 - PROVIDE HYDROPHILIC WATER STOP FOR ALL WATER HOLDING WALLS WITH WATER ON BOTH SIDES. SEE DET. 2 (WB-S0455)

- WF-S0105 WF-S0125
- WF-S0111 WF-S0131
- WF-S0115 WF-S0135
- WF-S0117 WF-S0141
- WF-S0121 WF-S0146



<p>APEGN Certificate of Authorization CH2M HILL Canada Ltd. No. 1441 Expiry: April 30, 2006</p>	<p>CH2MHILL Frederickson Cooper ARCHITECTS</p>	<p>EarthTech A Tyco International Ltd. Company</p>	ENGINEER'S SEAL	<p>THE CITY OF WINNIPEG WATER AND WASTE DEPARTMENT ENGINEERING DIVISION</p>	CITY FILE NUMBER		
			DESIGNED BY KA		CHECKED BY AP	ORIGINAL SIGNED BY D. KRUGER	SHEET OF
			DRAWN BY PM		APPROVED BY DJT	2006/02/06	
SCALE: 1:50	RELEASED FOR CONSTRUCTION BY: R. SOROKOWSKI	CONSULTANT DRAWING NO. WF-S0204	STRUCTURAL FILTRATION AREA SECTIONS	CITY DRAWING NUMBER 1-060F-A-S0204-001-0D			
NO. REVISIONS	DATE BY	DATE 2005/08/10	DATE 2006/02/08				