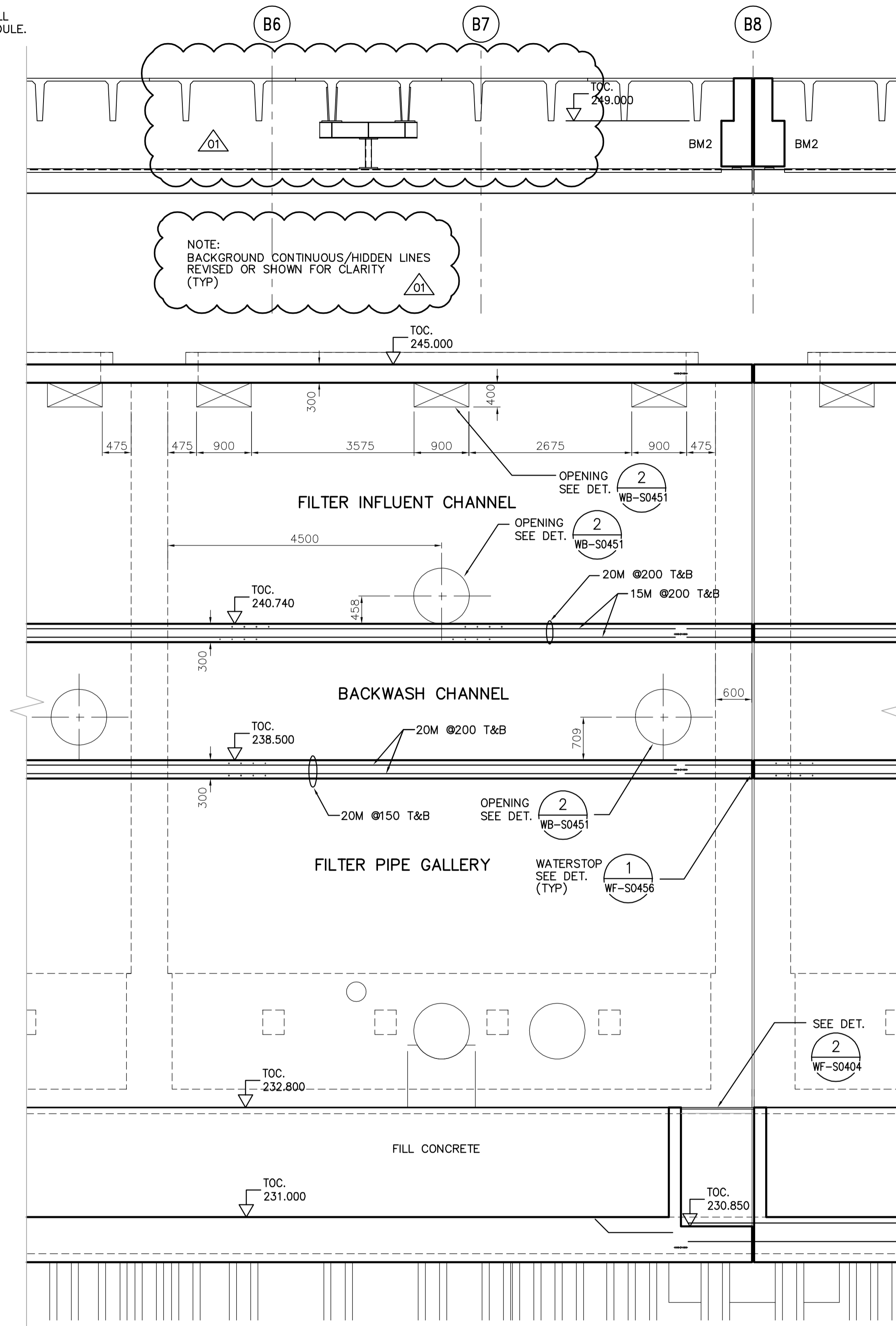


L SECTION
WF-S0101 1:50

- WF-S0105
- WF-S0111
- WF-S0115
- WF-S0117
- WF-S0121
- WF-S0125
- WF-S0131
- WF-S0135
- WF-S0141
- WF-S0146

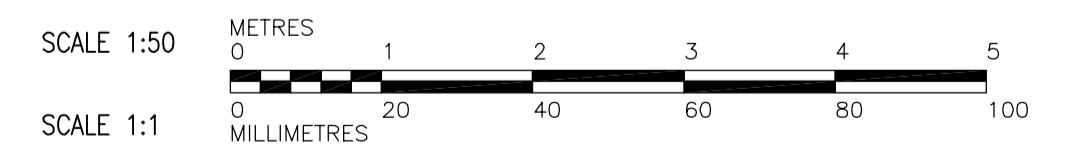
NOTES:

1. SEE DWG. WF-M9101 FOR ROUND OPENING SIZES (TYP)
2. FINAL DIMENSIONS OF ALL OPENINGS TO BE CONFIRMED WITH CONTRACTOR FOR INSTALLATION OF FILTER TROUGHS.
3. SEE PLANS FOR SLAB REINFORCEMENT.



M SECTION
WF-S0101 1:50

- WF-S0105
- WF-S0111
- WF-S0115
- WF-S0117
- WF-S0121
- WF-S0125
- WF-S0131
- WF-S0135
- WF-S0141
- WF-S0146



B.M. ELEV.			
01	583-2005 ADDENDUM 3	06/03/10	KA
00	ISSUED FOR TENDER	2006/02/03	KA
NO.	REVISIONS	DATE	BY
		2005/08/10	KA

CH2MHILL Frederickson Cooper ARCHITECTS		EarthTech A Yon International Ltd. Company	
DESIGNED BY	KA	CHECKED BY	AP
DRAWN BY	PM	APPROVED BY	DJT
SCALE:	1:50	RELEASED FOR CONSTRUCTION BY:	R. SOROKOWSKI
		DATE	2006/02/08

ENGINEER'S SEAL
ORIGINAL SIGNED BY
D. KRUGER
2006/02/06
CONSULTANT DRAWING NO.
WF-S0209

THE CITY OF WINNIPEG
WATER AND WASTE DEPARTMENT
ENGINEERING DIVISION

WATER TREATMENT PLANT
FILTRATION
FOUNDATIONS AND CONCRETE STRUCTURES

STRUCTURAL
FILTRATION AREA
SECTIONS

CITY FILE NUMBER

SHEET OF

CITY DRAWING NUMBER
1-060F-A-50209-001-0D