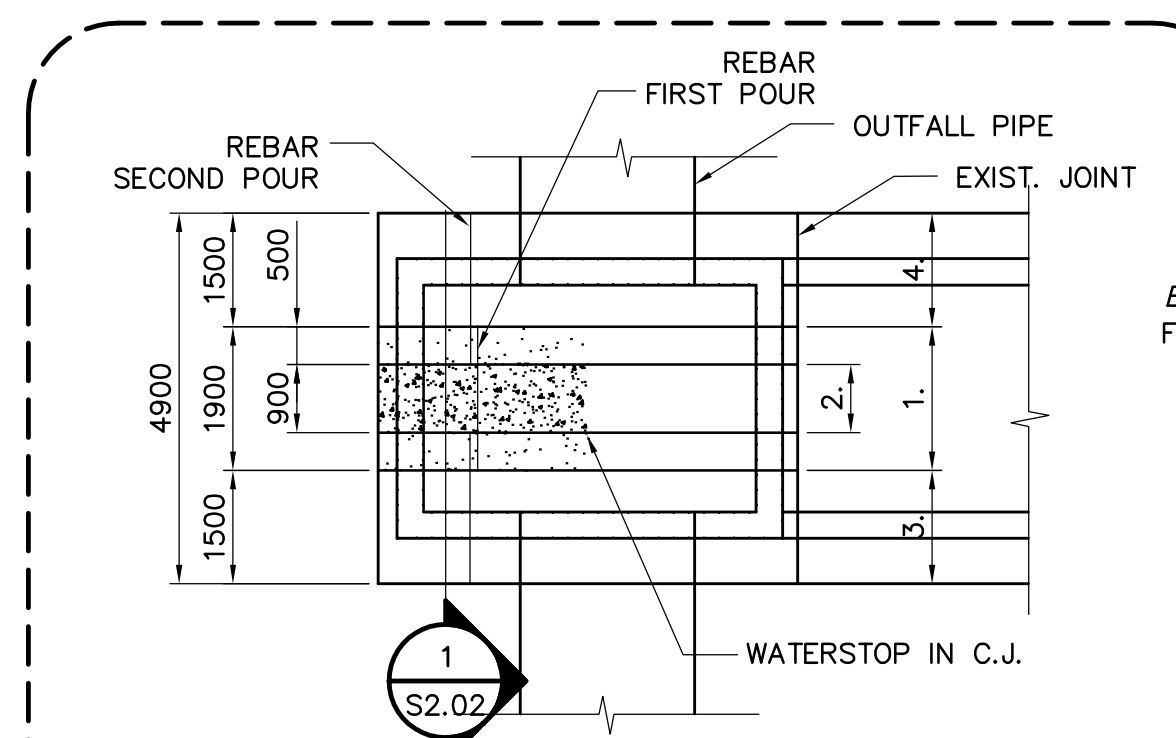
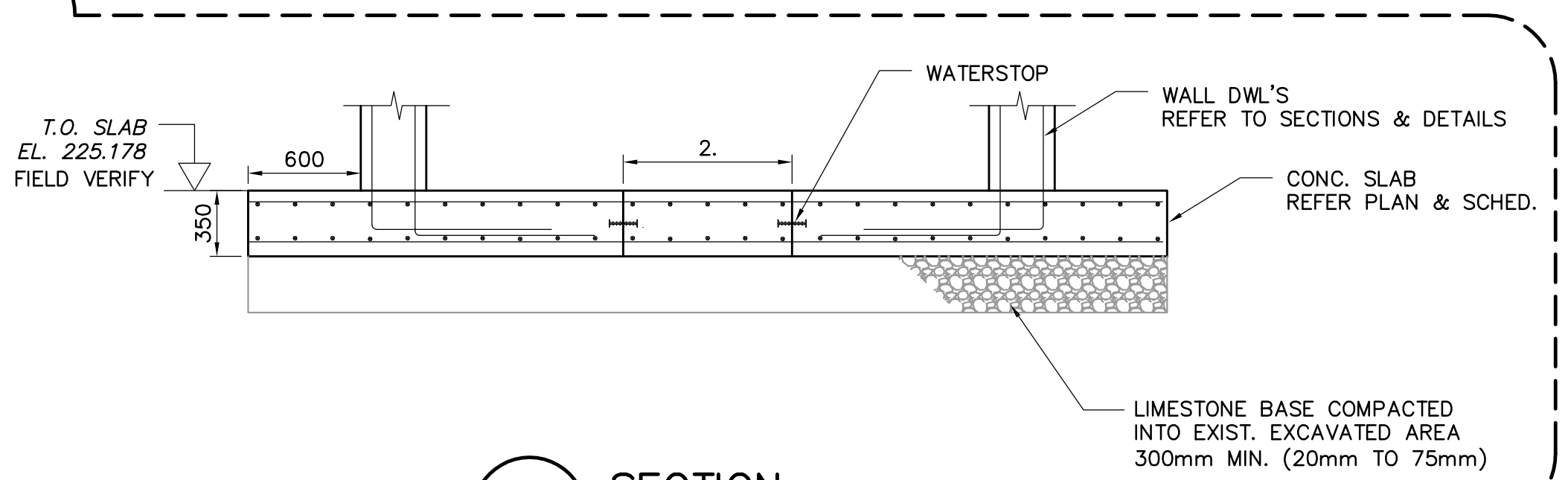


PLAN ABOVE ELEVATION 225.478
SCALE: 1:150



- FLOOR SLAB POURING SEQUENCES OUTFALL CHAMBER:**
- EXCAVATE THE MIDDLE STRIP, 1.9m WIDE.
 - INSTALL WATERSTOP, REINFORCE AND POUR MIDDLE STRIP CONCRETE, 0.9m WIDE.
 - EXCAVATE OUTSIDE STRIP, PLACE REINFORCEMENT AND POUR CONCRETE.
 - EXCAVATE OUTSIDE STRIP ON THE OTHER SIDE, PLACE REBAR AND POUR CONCRETE.

A
DETAIL
S2.02 SCALE 1:100



1
SECTION
S2.02 SCALE NTS

NOTES:

- FOR GENERAL NOTES AND SCHEDULES REFER TO DRAWING CS1.01.
- FOR STANDARD DETAILS REFER TO DRAWINGS CS4.01, CS4.02, AND CS4.03.



NO.	REVISIONS	DATE	BY
1	ISSUED FOR ADDENDUM 1	05/03/04	JEH
0	ISSUED FOR TENDER	05/02/18	JEH

EARTH TECH	
<small>Earth Tech (Canada) Inc. Winnipeg, Manitoba 204.477.5381</small>	
DESIGNED BY	RE, MK
CHECKED BY	GOP
DRAWN BY	C.T.
APPROVED BY	DT
HOR. SCALE:	AS NOTED
VERTICAL SCALE:	AS NOTED
RELEASED FOR CONSTRUCTION BY:	T. KJARTANSON
DATE	2004/11/04
DATE	2005-02-18

ENGINEER'S SEAL	ORIGINAL SIGNED BY
	R.B. ERIC
	FEB. 18/05
CONSULTANT DRAWING NO.	66303D-CS2.02

THE CITY OF WINNIPEG
Winnipeg WATER AND WASTE DEPARTMENT

**NEWPCC - SECONDARY EFFLUENT
UV DISINFECTION FACILITY**

STRUCTURAL
PLAN ABOVE ELEVATION 225.478

CITY FILE NUMBER	SHEET 3 OF 19
CITY DRAWING NUMBER	