

NOTES:

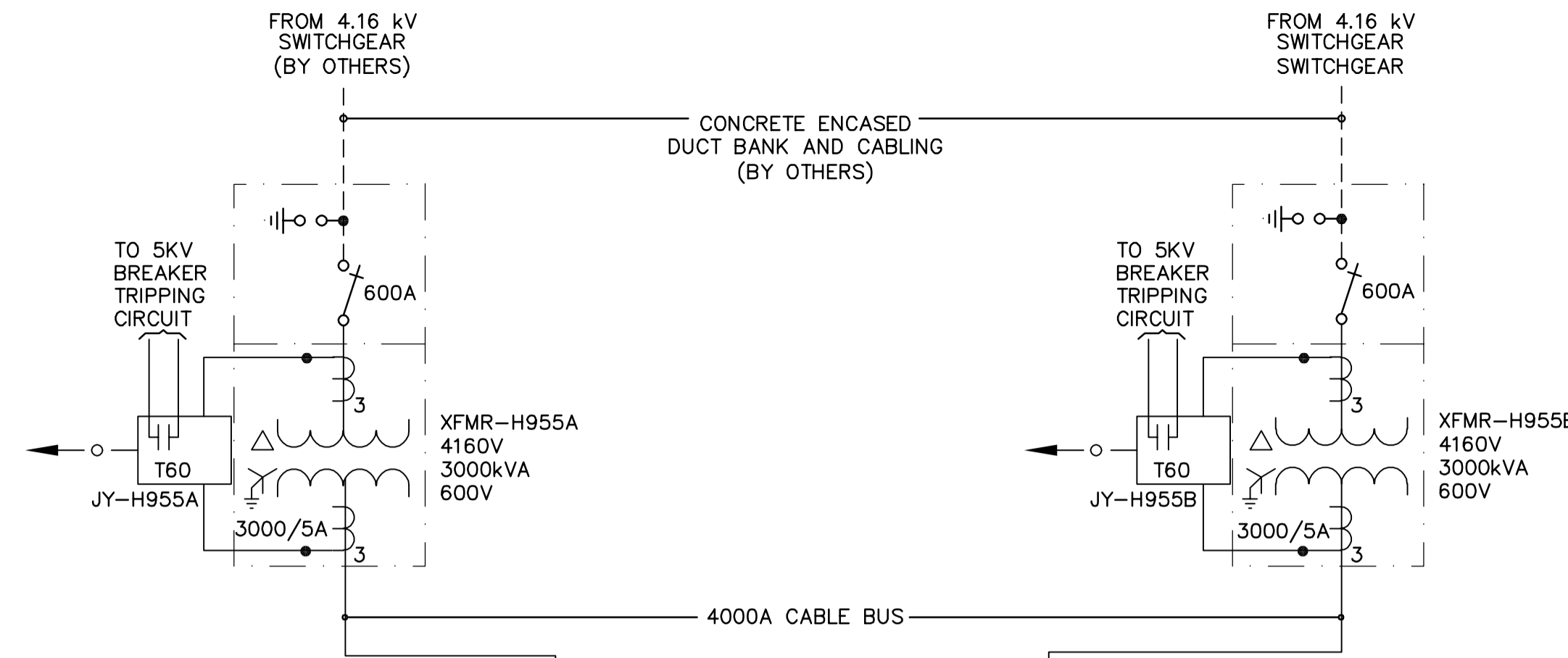
- T60 = TRANSFORMER PROTECTION RELAY - MULTILIN MODEL T60 BY POWER MEASUREMENT LTD. CTS AND PTS ARE NOT SHOWN ON DRAWING BUT ARE TO BE PROVIDED AS PER SPECIFICATION.
- F60 = FEEDER PROTECTION RELAY - MULTILIN MODEL F60

○ ○ ○ ○ ○ INDICATE CAT 5E NETWORK CONNECTION TO LCP-H10A

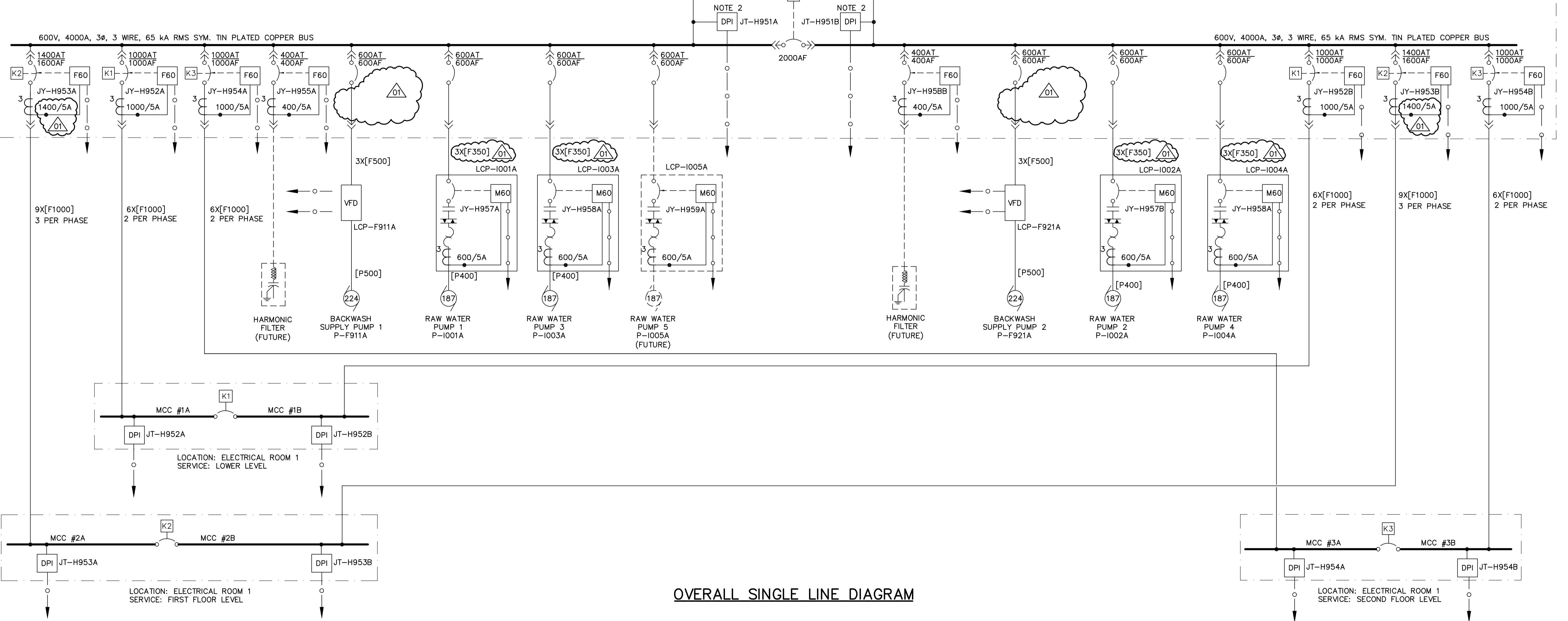
- CABLES IDENTIFIED WITH PREFIX "F" (E.G. [F1000], [F500] ETC) ARE TO BE RUN IN EXISTING DUCT BANK. SEE CABLE DESIGNATIONS BELOW.
 [F100] :- 1/C-100 kcmil, RW90, XLPE INSULATION
 [F500] :- 1/C-500 kcmil, RW90, XLPE INSULATION
 [F350] :- 1/C-350 kcmil, RW90, XLPE INSULATION
 [F1000] :- 1/C-1000 kcmil, RW90, XLPE INSULATION

KEY INTERLOCKS

K, K1, K2, K3 :- EACH TWO KEYS, THREE LOCKS, KEY REMOVABLE IN THE BREAKER OPEN POSITION. INSERT KEY TO CLOSE BREAKER.



SWGR #1A, 1B
 LOCATION: ELECTRICAL ROOM 1
 SERVICE: LOWER LEVEL, FIRST FLOOR LEVEL AND SECOND LEVEL
 600V SWITCHGEAR #1A (SWGR #1A)



OVERALL SINGLE LINE DIAGRAM

<p>APECM Certificate of Authorization CH2M HILL Canada Ltd. No. 1441 Expiry: April 30, 2007</p>	B.M. ELEV.	<p>Frederickson Cooper ARCHITECTS</p>	<p>EarthTech A Tyco International Ltd. Company</p>	ENGINEER'S SEAL	<p>THE CITY OF WINNIPEG WATER AND WASTE DEPARTMENT ENGINEERING DIVISION</p>		
				DESIGNED BY JT		CHECKED BY ND	ORIGINAL SIGNED BY L.D. LLEWELLYN
				DRAWN BY KJ		APPROVED BY AHL	2006/03/29
				SCALE: NTS		RELEASED FOR CONSTRUCTION BY: R. SOROKOWSKI	CONSULTANT DRAWING NO. WB-E0511
	01 742-2005 ADDENDUM 3 06/05/05 LL	DATE 2005/06/29	DATE 2006/03/29		WATER TREATMENT PLANT MAIN BUILDING MECHANICAL AND ELECTRICAL ELECTRICAL 600V SWITCHGEAR SINGLE LINE DIAGRAM		
	00 ISSUED FOR TENDER 06/03/29 LL				CITY FILE NUMBER		
	NO. REVISIONS	DATE	DATE		SHEET OF		
					CITY DRAWING NUMBER		
					1-0601B-F-E0511-001-01D		