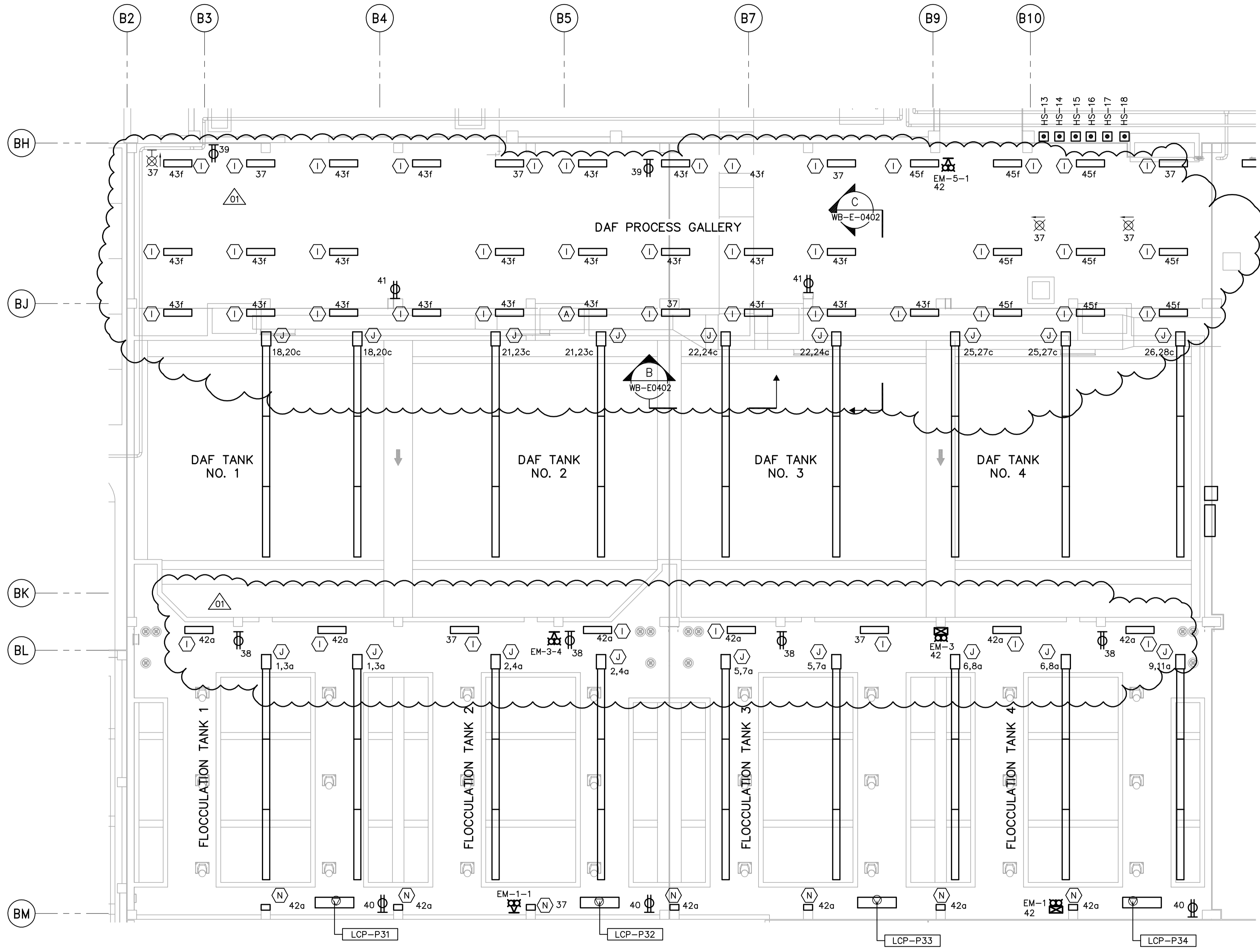
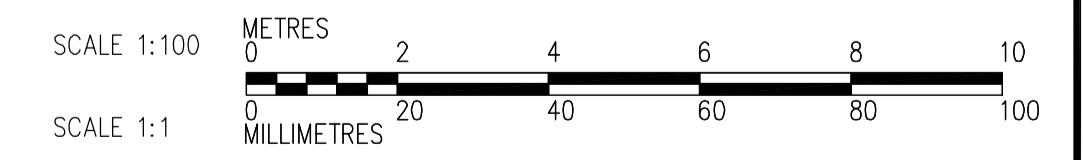


- NOTES:
 1. ALL 120V AND 208V LOADS ARE FED FROM LP-P31
 2. SEE DRAWINGS WB-E0402 AND WB-E0403 FOR LUMINAIR MOUNTING DETAILS



THIRD FLOOR POWER AND LIGHTING PLAN (AREA 1)
 1:100



 Certificate of Authorization CH2M HILL Canada Ltd. No. 1441 Expiry: April 30, 2007	B.M. ELEV. <table border="1"> <tr><td> </td><td> </td><td> </td></tr> <tr><td> </td><td> </td><td> </td></tr> <tr><td> </td><td> </td><td> </td></tr> </table>										 Frederickson Cooper ARCHITECTS DESIGNED BY LL CHECKED BY ND DRAWN BY TLL APPROVED BY AHL SCALE: 1:100 RELEASED FOR CONSTRUCTION BY: R. SOROKOWSKI DATE 2005/07/12 DATE 2006/03/29	ENGINEER'S SEAL ORIGINAL SIGNED BY L.D. LLEWELLYN 2006/03/29 CONSULTANT DRAWING NO. WP-E0135	 THE CITY OF WINNIPEG WATER AND WASTE DEPARTMENT ENGINEERING DIVISION WATER TREATMENT PLANT FLOCCULATION AND DAF MECHANICAL AND ELECTRICAL ELECTRICAL FLOC/DAF AREA 1 THIRD FLOOR POWER AND LIGHTING PLAN	CITY FILE NUMBER
SHEET OF														
				CITY DRAWING NUMBER	1-0601P-A-E0135-001-01D									