

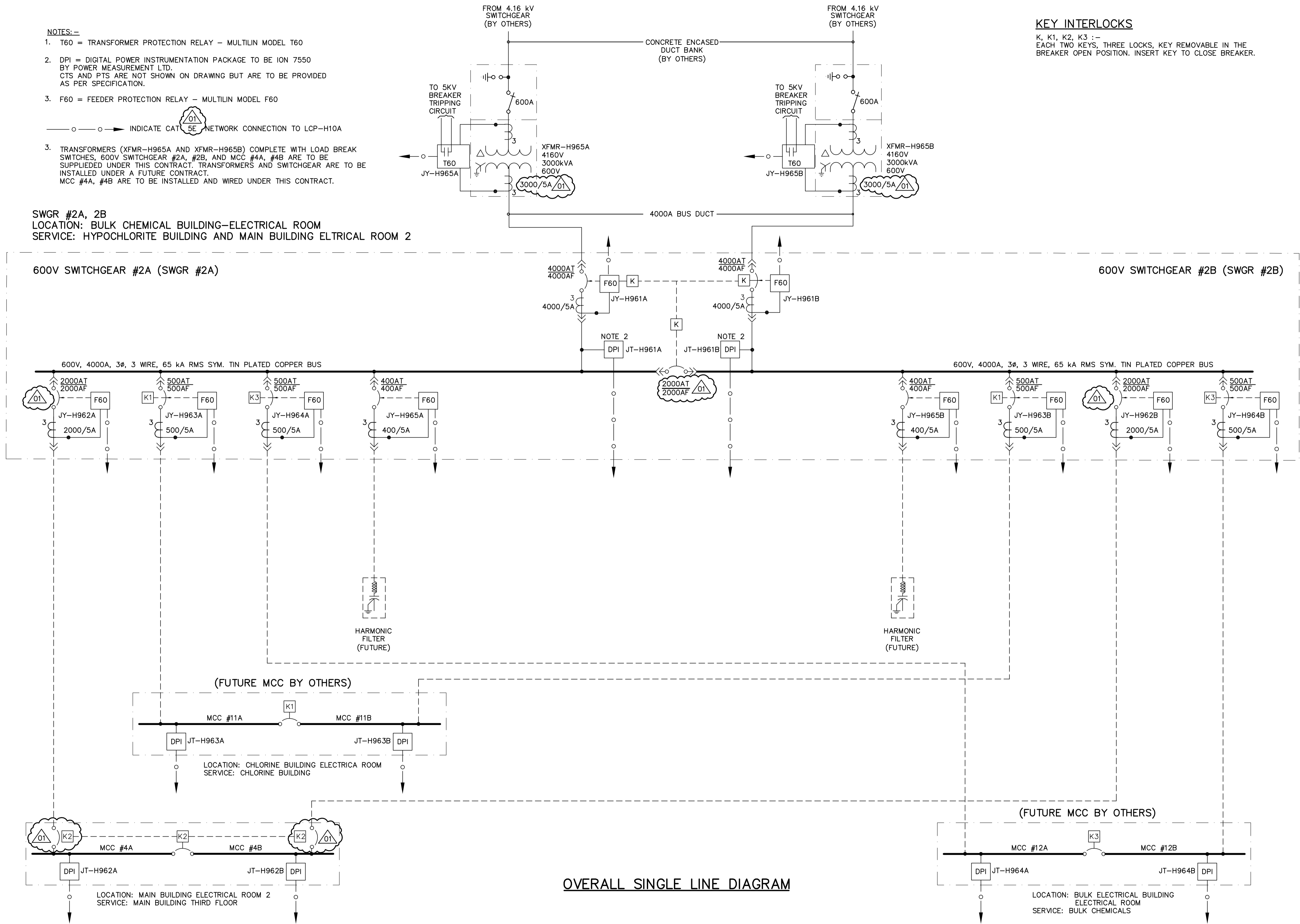
NOTES:-

- T60 = TRANSFORMER PROTECTION RELAY - MULTILIN MODEL T60
 - DPI = DIGITAL POWER INSTRUMENTATION PACKAGE TO BE ION 7550 BY POWER MEASUREMENT LTD. CTS AND PTS ARE NOT SHOWN ON DRAWING BUT ARE TO BE PROVIDED AS PER SPECIFICATION.
 - F60 = FEEDER PROTECTION RELAY - MULTILIN MODEL F60
- — ○ — ○ INDICATE CAT 5E NETWORK CONNECTION TO LCP-H10A
3. TRANSFORMERS (XFMR-H965A AND XFMR-H965B) COMPLETE WITH LOAD BREAK SWITCHES, 600V SWITCHGEAR #2A, #2B, AND MCC #4A, #4B ARE TO BE SUPPLIED UNDER THIS CONTRACT. TRANSFORMERS AND SWITCHGEAR ARE TO BE INSTALLED UNDER A FUTURE CONTRACT. MCC #4A, #4B ARE TO BE INSTALLED AND WIRED UNDER THIS CONTRACT.

SWGR #2A, 2B
 LOCATION: BULK CHEMICAL BUILDING-ELECTRICAL ROOM
 SERVICE: HYPOCHLORITE BUILDING AND MAIN BUILDING ELECTRICAL ROOM 2

KEY INTERLOCKS

K, K1, K2, K3 :-
 EACH TWO KEYS, THREE LOCKS, KEY REMOVABLE IN THE BREAKER OPEN POSITION. INSERT KEY TO CLOSE BREAKER.



OVERALL SINGLE LINE DIAGRAM

| | | | | | | | |
|--------------------------------------------------------------------------------------------------------------------------------------------|------------------------------------|---------------------------------------|---------------------------------------------------|-----------------------------------------------------------------------------------------------|------------------------------------------------------------------------------------------------------------------------------|---------------------------------------------|-----------------------------------|
| <p>Certificate of Authorization CH2M HILL Canada Ltd. No. 1441 Expiry: April 30, 2007</p> | B.M. ELEV. | <p>Frederickson Cooper ARCHITECTS</p> | <p>EarthTech A Yeo International Ltd. Company</p> | ENGINEER'S SEAL | <p>THE CITY OF WINNIPEG WATER AND WASTE DEPARTMENT ENGINEERING DIVISION</p> | | |
| | | | | DESIGNED BY JT | | CHECKED BY ND | ORIGINAL SIGNED BY L.D. LLEWELLYN |
| | | | | DRAWN BY KJ | | APPROVED BY AHL | 2006/03/29 |
| | | | | SCALE: NTS | | RELEASED FOR CONSTRUCTION BY: R. SOROKOWSKI | CONSULTANT DRAWING NO. WS-E0501 |
| | 01 742-2005 ADDENDUM 3 06/05/05 LL | DATE 2005/06/29 | DATE 2006/03/29 | WATER TREATMENT PLANT BULK CHEMICAL STORAGE AND FEED BUILDING MECHANICAL AND ELECTRICAL | CITY FILE NUMBER | | |
| | 00 ISSUED FOR TENDER 06/03/29 LL | | | ELECTRICAL | SHEET OF | | |
| | NO. REVISIONS | DATE | DATE | 600V SWITCHGEAR SINGLE LINE DIAGRAM | CITY DRAWING NUMBER | | |
| | | | | | 1-0601S-F-E0501-001-01D | | |