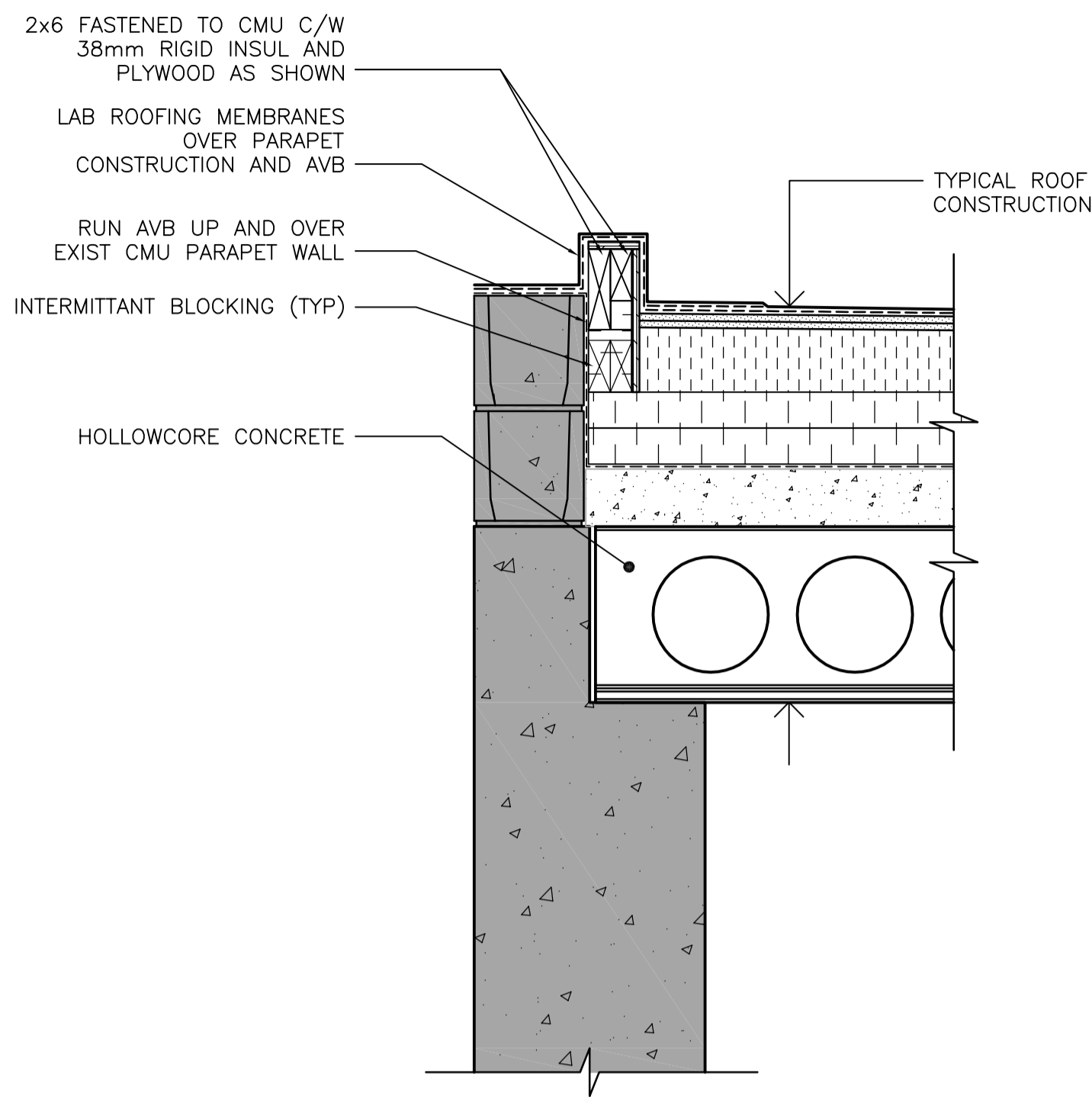
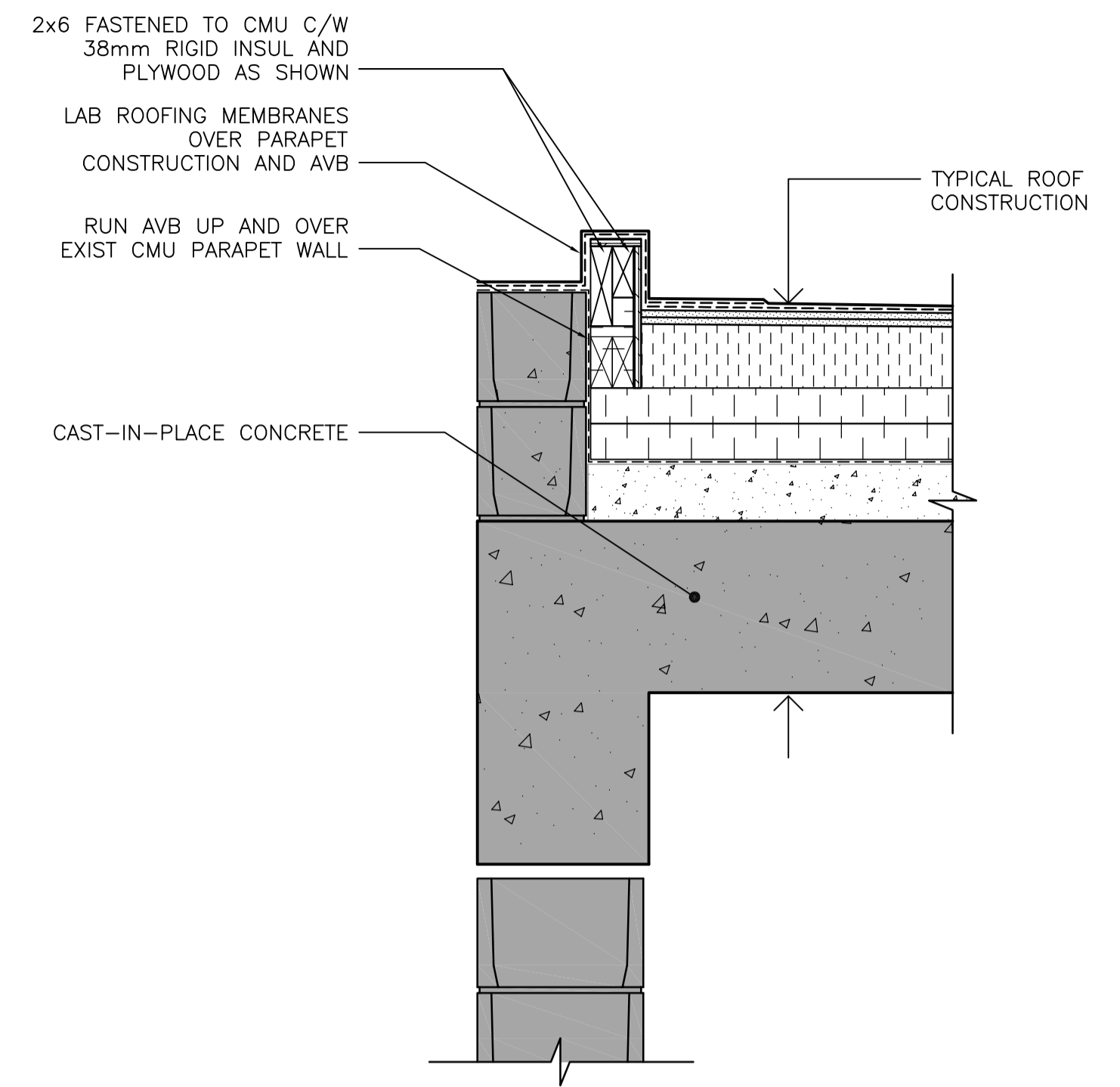


CONSTRUCTION NOTE:
CONTRACTOR TO ENSURE DEBRIS DOES NOT FALL THROUGH GAPS IN CONCRETE ROOFING STRUCTURE DURING THE TOPPING/ROOFING INSTALLATION. ANY SUCH OCCURANCES SHOULD BE FULLY CLEANED-UP IMMEDIATELY AND NOT AFFECT ANY WORK INSIDE THE BUILDING (TYPICAL).

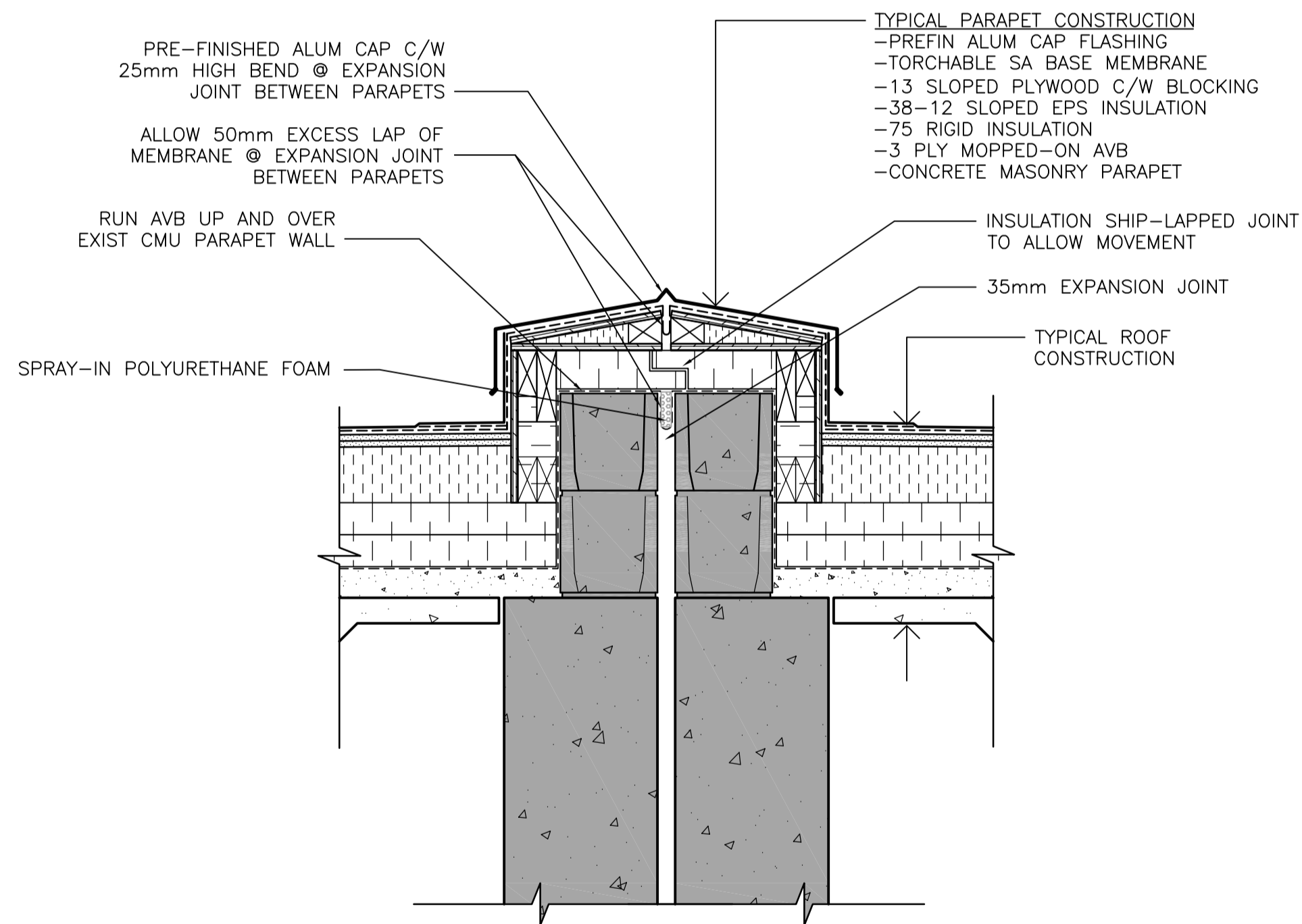
1 ROOFING DETAIL @ CONC TEE (W/ TOPPING)
WB-B0401 1 : 10



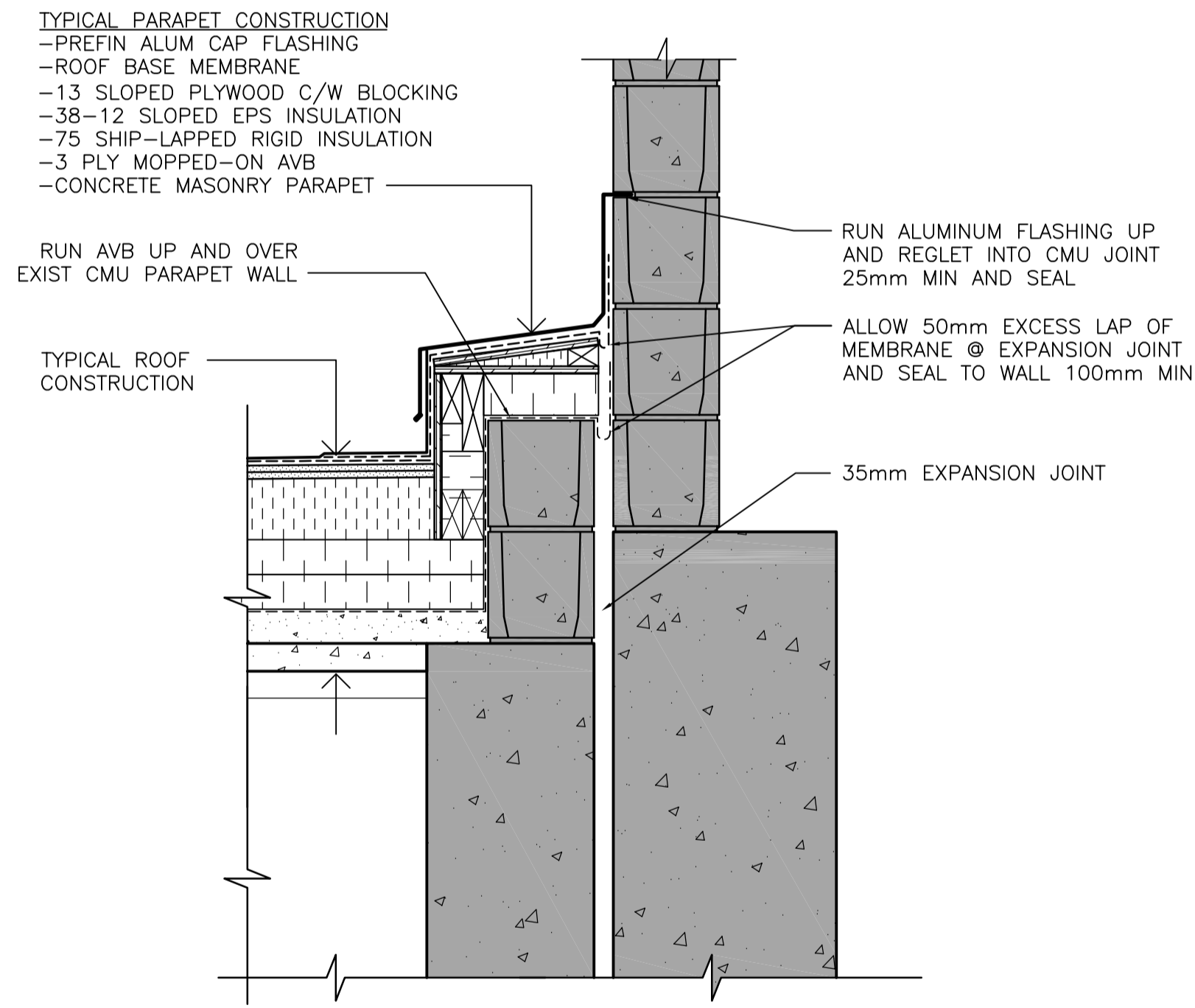
2 ROOFING DETAIL @ HOLLOWCORE (W/ TOPPING)
WB-B0401 1 : 10



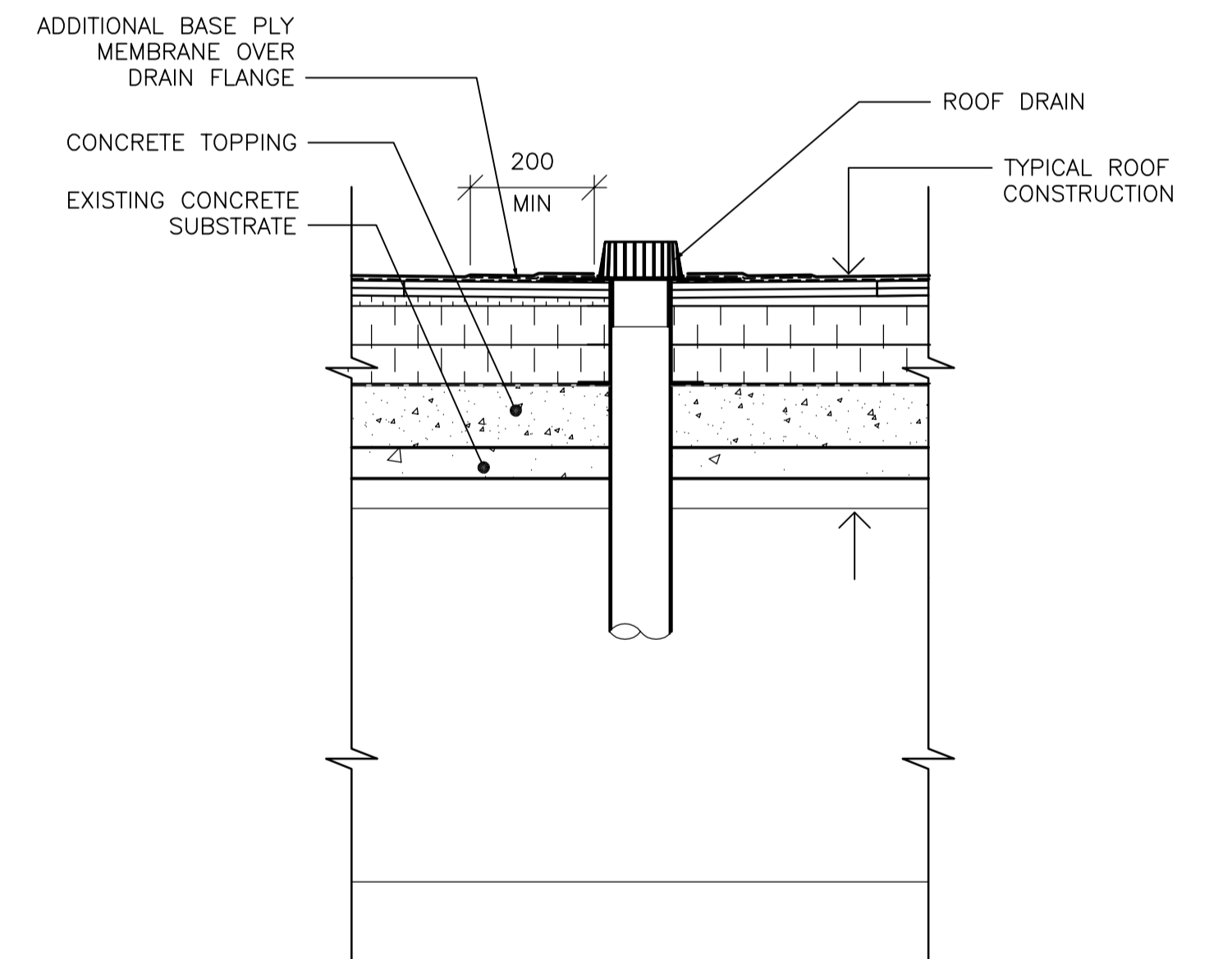
3 ROOFING DETAIL @ CIP CONC (W/ TOPPING)
WB-B0401 1 : 10



4 ROOFING DETAIL @ EXP JOINT (W/ TOPPING)
WB-B0401 1 : 10



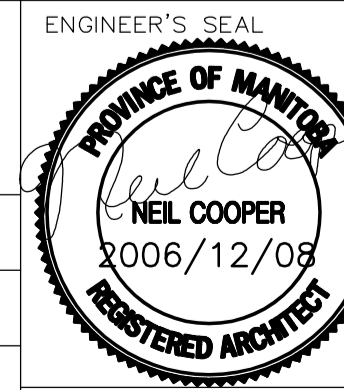
5 ROOFING DETAIL @ WALL EXP JOINT (W/ TOPPING)
WB-B0401 1 : 10



6 ROOFING DETAIL @ ROOF DRAIN (W/ TOPPING)
WB-B0401 1 : 10



B.M. ELEV.					
DESIGNED BY	NC	CHECKED BY	NC		
DRAWN BY	LK	APPROVED BY	AHL		
SCALE:	1:10	RELEASED FOR CONSTRUCTION BY:	R. SOROKOWSKI		
NO. REVISIONS		DATE	2006/11/06	DATE	2006/12/08



THE CITY OF WINNIPEG
WATER AND WASTE DEPARTMENT
ENGINEERING DIVISION

WATER TREATMENT PLANT
MAIN BUILDING
BUILDING ENVELOPE

ARCHITECTURAL
ROOFING AND PARAPET DETAILS
WITH CONCRETE TOPPING

CITY FILE NUMBER
SHEET OF
CITY DRAWING NUMBER
1-0601B-A-B0401-001-000