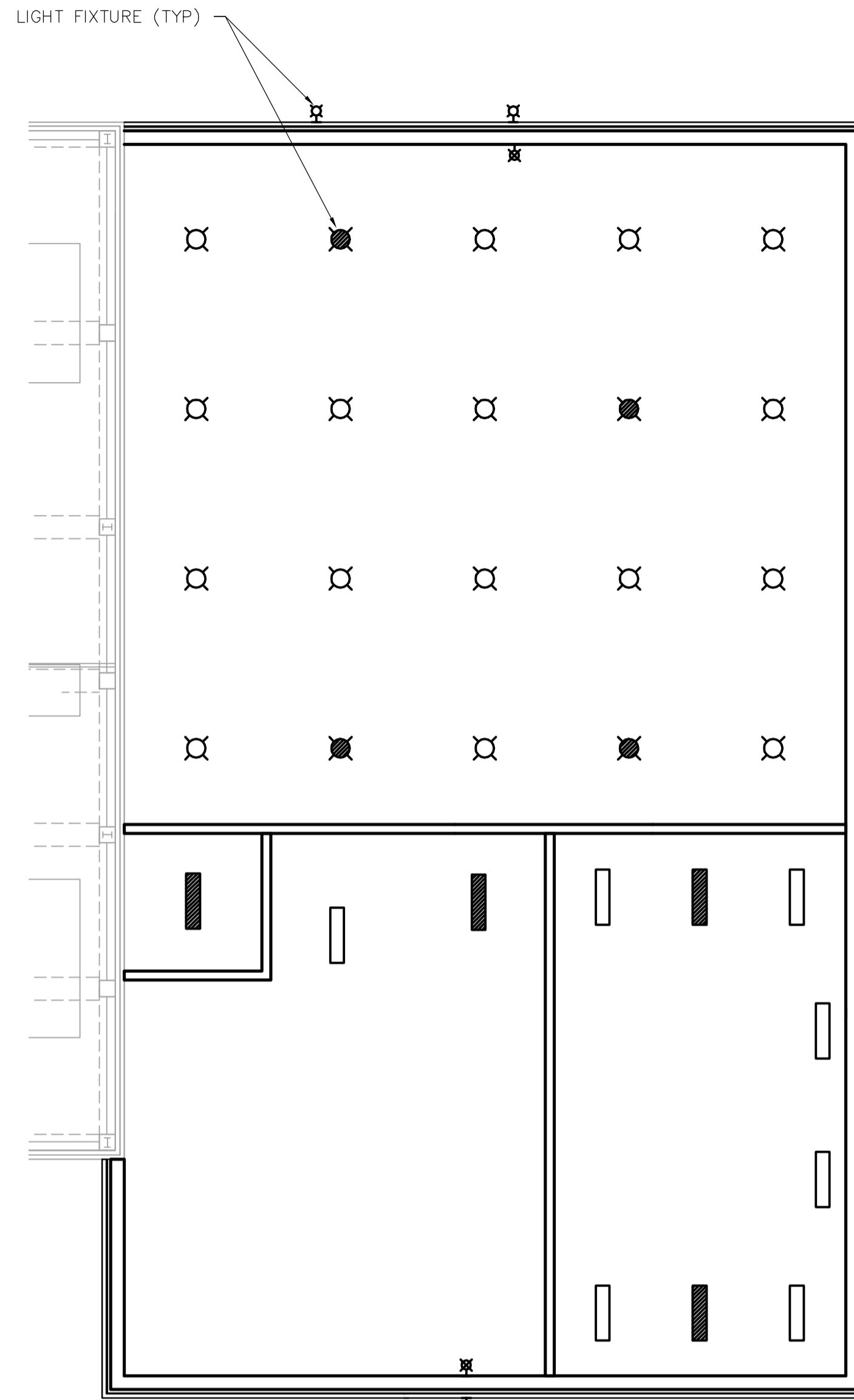
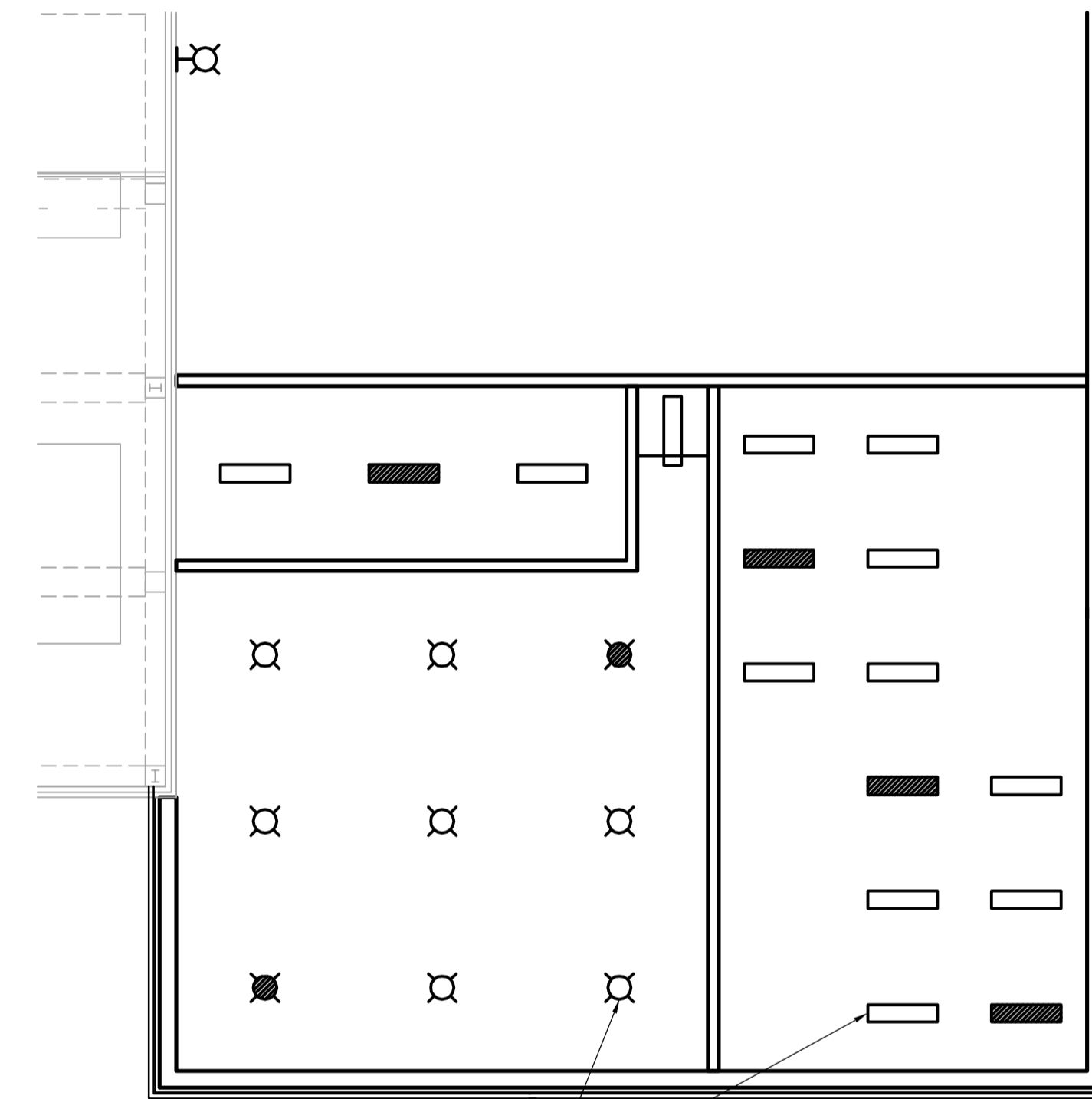


1 MEZZANINE PLAN
TA1.02 1:100



2 MAIN FLOOR REFLECTED CEILING PLAN
TA1.02 1:100



3 MEZZANINE REFLECTED CEILING PLAN
TA1.02 1:100

NOTE: SEE ELECTRICAL FOR LIGHTING LOCATION AND LAYOUT

DOOR SCHEDULE																	
DOOR NO	TO ROOM	DOOR				FRAME				HDW GROUP	FIRE RATING	GRILLES	COMMENTS				
		SIZE	SWING	TYPE	MAT	TYPE	FINISH COLOUR	PROFILE	MAT								
D201A	MECHANICAL	45x900x2150	LH	1	HM	HC	PT	A	2	HM	WLD	PT	A	1	N/A	N/A	
D201B	EXTERIOR	45x900x2150	RH	1	HM	INSUL	PT	A	1	HM	WLD	PT	A	4	N/A	N/A	BLANK EXTERIOR
D202	ELECTRICAL	45x900x2150	RH	1	HM	HC	PT	A	2	HM	WLD	PT	A	1	N/A	N/A	

FINISH SCHEDULE																							
ROOM NO	ROOM NAME	FLOOR				WALLS								CEILING	COMMENTS								
		FLOORING		BASE		NORTH		EAST		SOUTH		WEST											
		MAT	COLOUR	MAT	COL	MAT	FINISH COLOUR	MAT	FINISH COLOUR	MAT	FINISH COLOUR	MAT	FINISH COLOUR										
201	MECHANICAL	EPOXY	A	EPXY COV	A	CB	PT	C	CB	PT	C	CB	PT	C	CB	PT	C	METAL	PT	D.GREY	+/-	3750	
202	ELECTRICAL	EPOXY	A	EPXY COV	A	CB	PT	C	CB	PT	C	CB	PT	C	CB	PT	C	METAL	PT	D.GREY	+/-	3950	

NO.	REVISIONS	DATE	BY
02	21-2006 ADDENDUM 02	06/06/02	LK
01	21-2006 ADDENDUM 3	06/05/25	LK
00	ISSUED FOR TENDER	06/04/26	LK

EarthTech
A Tyco International Ltd. Company

DESIGNED BY: NC
DRAWN BY: LK

CHECKED BY: NC
APPROVED BY: JEH

HOR. SCALE: AS NOTED
VERTICAL SCALE: AS NOTED

RELEASED FOR CONSTRUCTION BY: J. VEILLEUX

DATE: 2006/01/03
DATE: 2006/04/26



ENGINEER'S SEAL

ORIGINAL SIGNED BY: N. COOPER

DATE: 2006/04/26

CONSULTANT DRAWING NO. TA1.02

THE CITY OF WINNIPEG
WATER AND WASTE DEPARTMENT
ENGINEERING DIVISION

WEWPC
BIOLOGICAL NUTRIENT REMOVAL UPGRADE
CONTRACT No. 3

ARCHITECTURAL
AREA T - DAF THICKENER BUILDING
MEZZANINE FLOOR AND REF CEILING PLANS, & SCHEDULES

CITY FILE NUMBER
SHEET 2 OF 6
CITY DRAWING NUMBER

