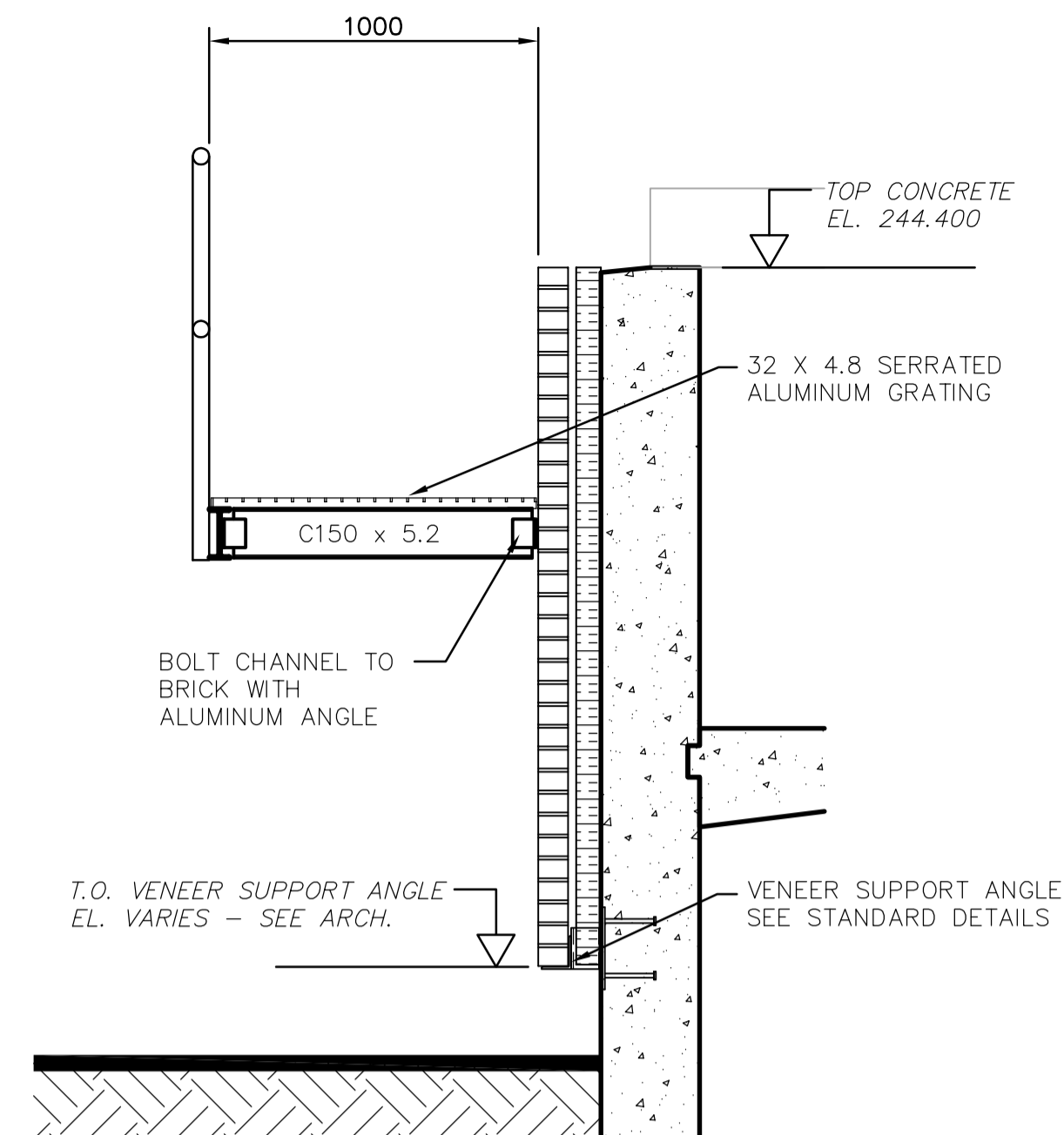
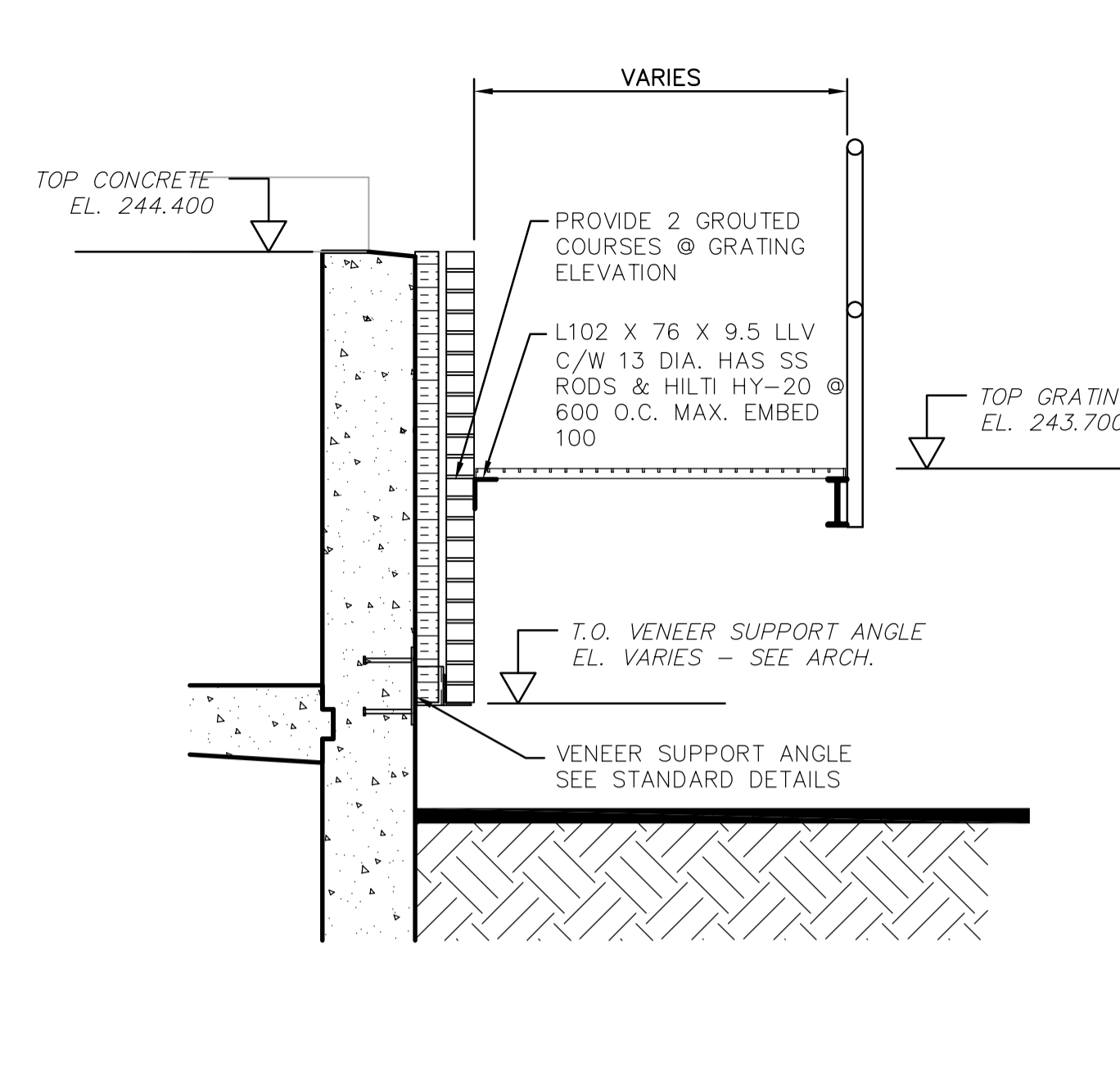


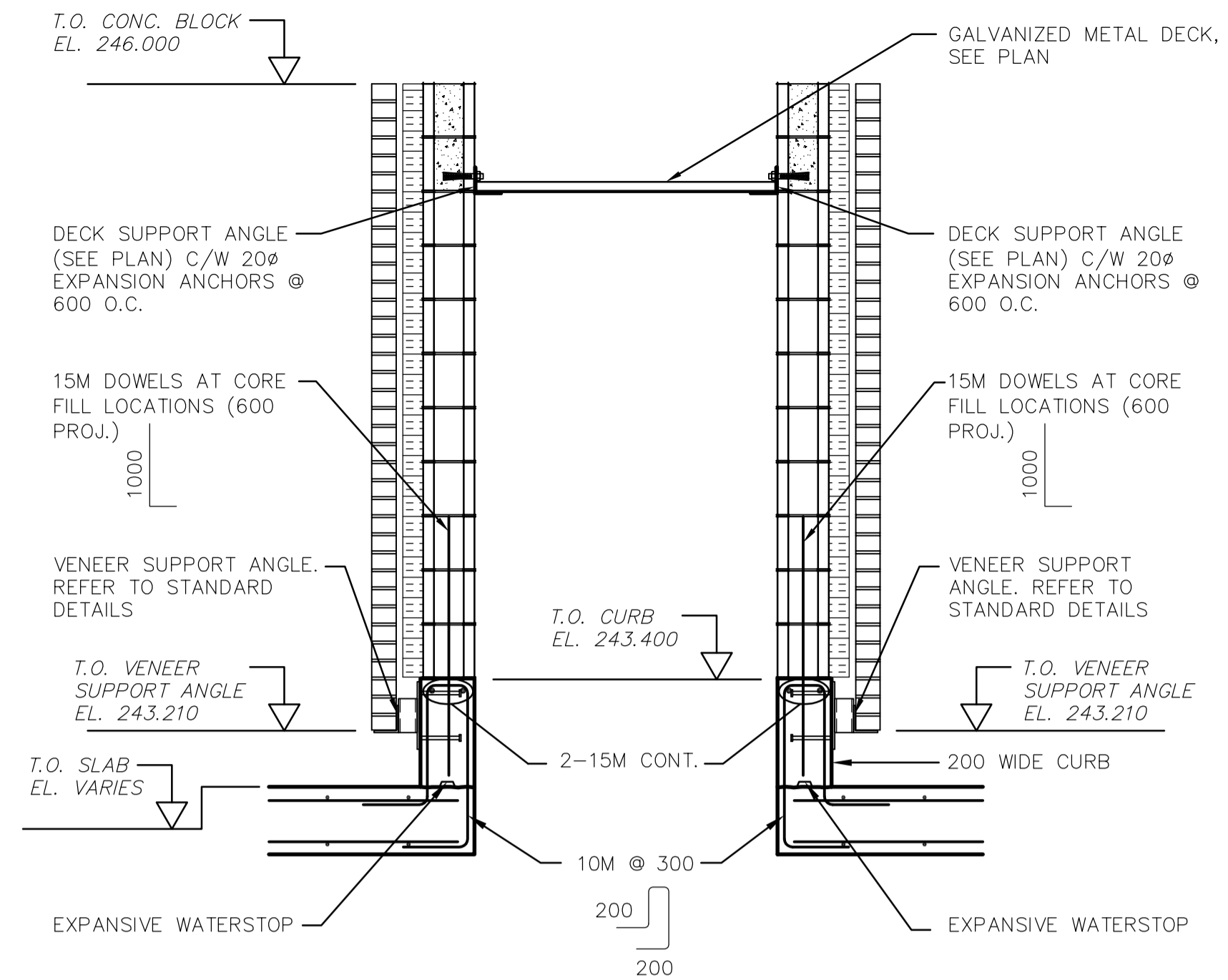
A SECTION AT OUTRIGGER
TYPICAL WALKWAY
FS2.06 1:20



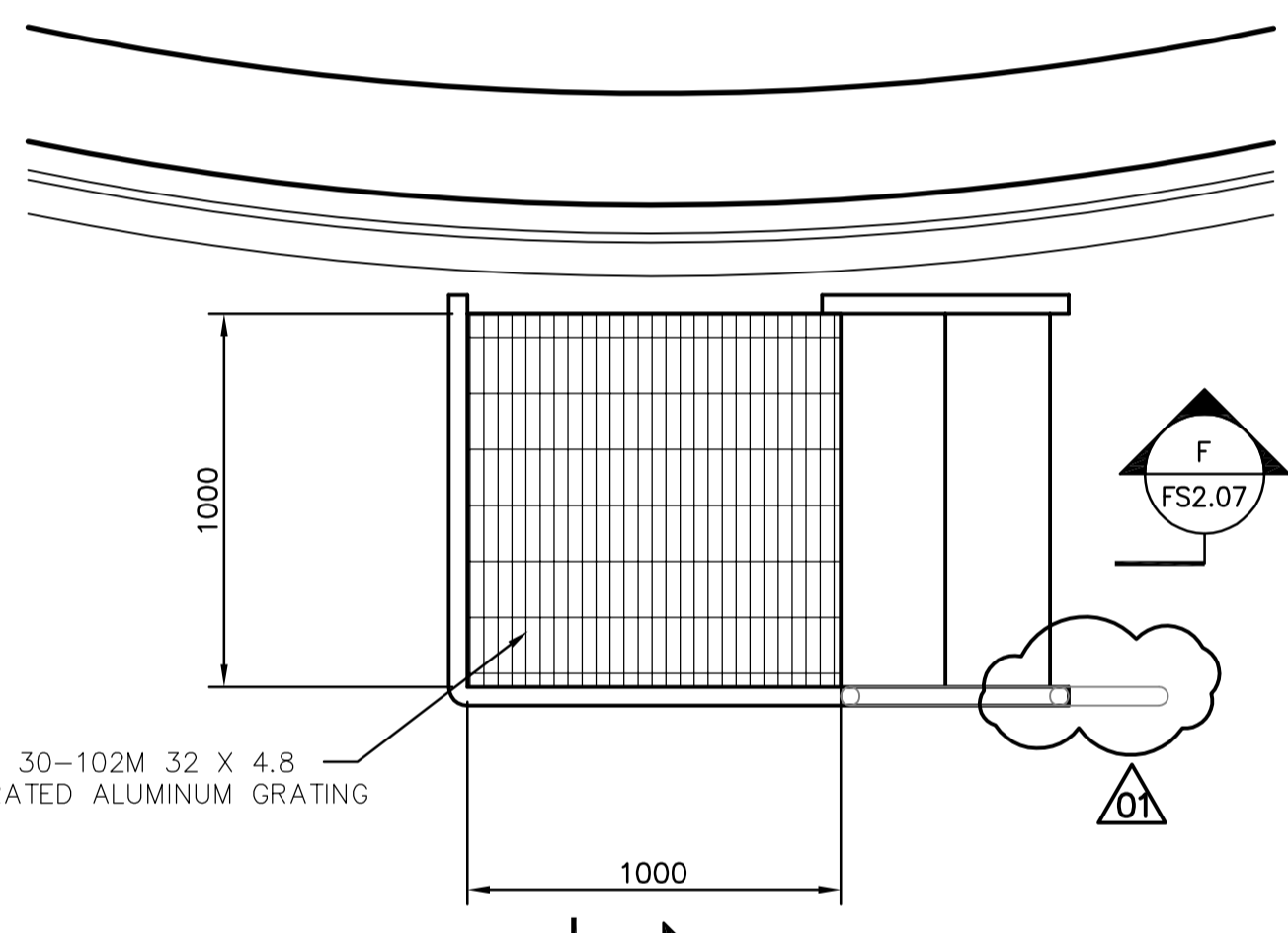
B SECTION AT MID-SPAN
TYPICAL WALKWAY
FS2.06 1:20



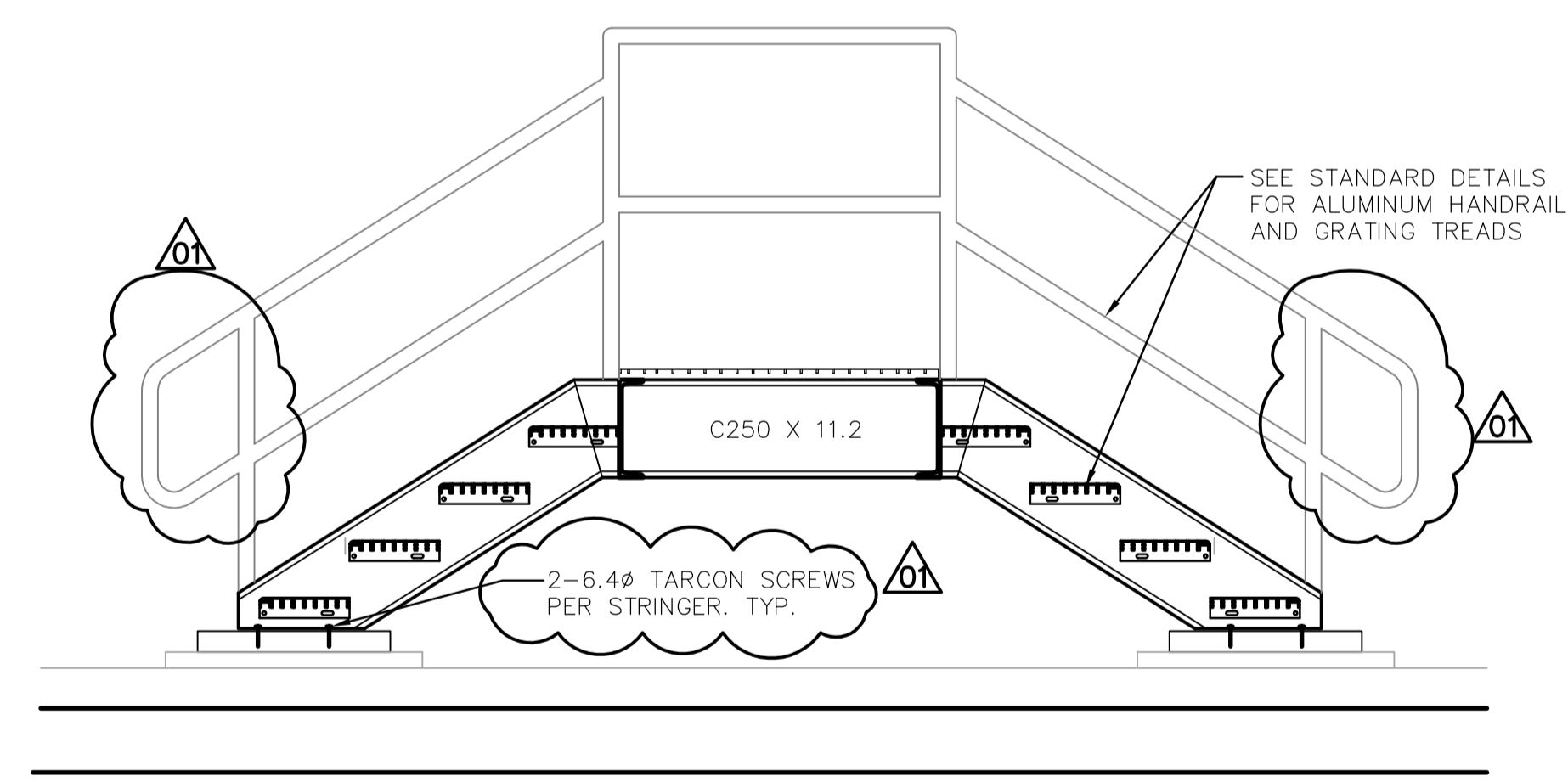
C SECTION BETWEEN SUPPORTS
TYPICAL WALKWAY
FS2.06 1:20



H SECTION
FS2.06 1:20

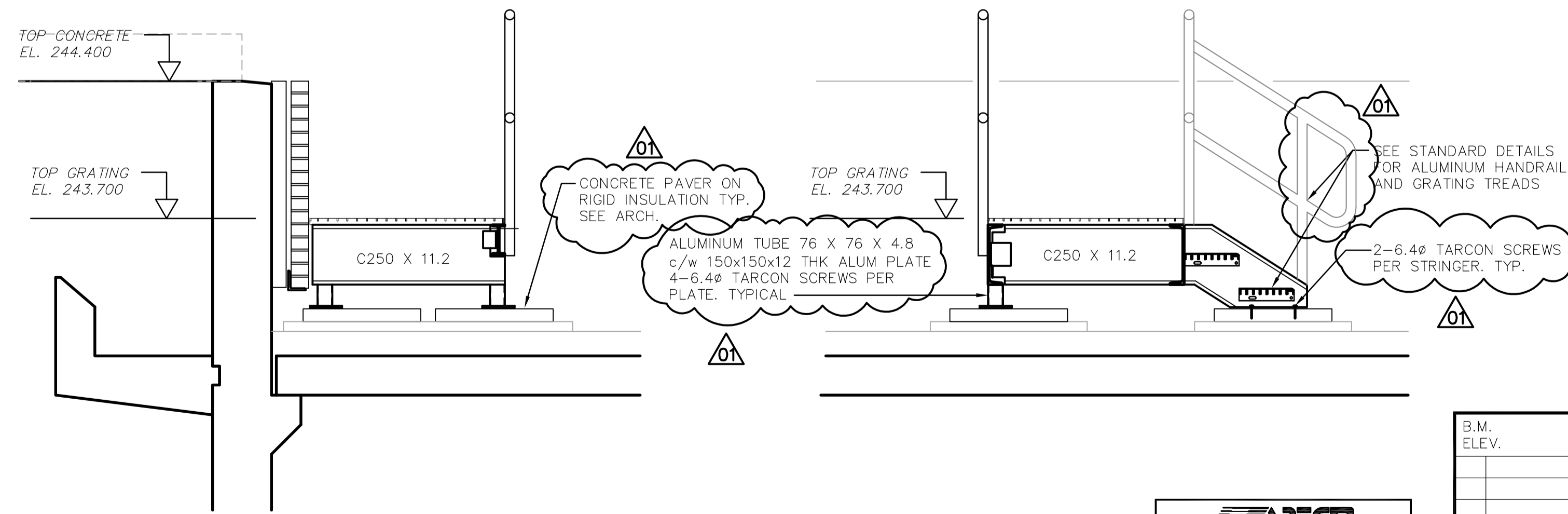


D PLATFORM PLAN
FS2.06 1:20



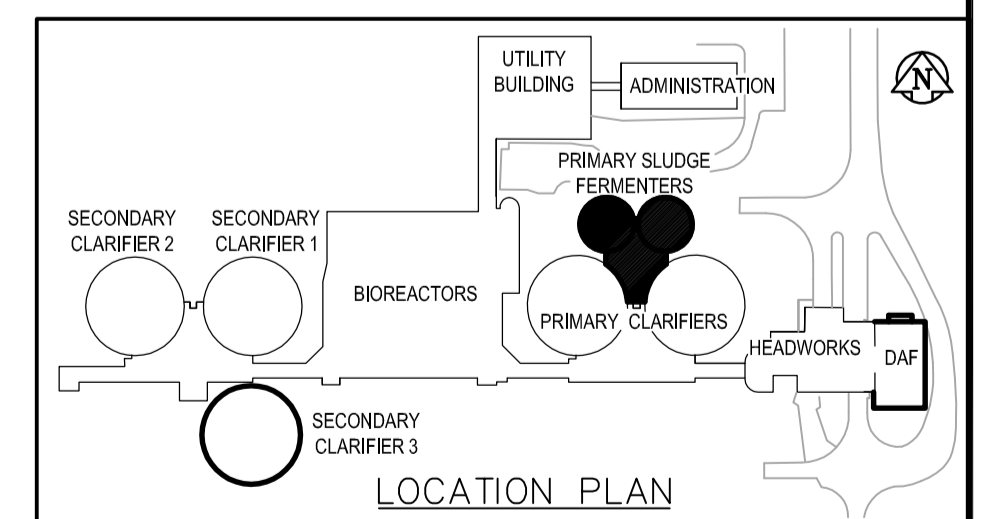
G STILE SECTION
FS2.06 1:20

NOTE:
ALL WALKWAY AND PLATFORM FRAMING SHALL BE ALUMINUM SECTIONS U.N.O. SEE TABLE ON DRAWING FS2.06 FOR SECTION GEOMETRY.



E PLATFORM SECTION
FS2.07 1:20

F PLATFORM SECTION
FS2.07 1:20



LOCATION PLAN

APECM
Certificate of Authorization
Earth Tech Canada Inc.
No. 730 Expiry: April 30, 2006

<p>EarthTech A Tyco International Ltd. Company</p>		ENGINEER'S SEAL ORIGINAL SIGNED BY C.J. GENTILE 2006/04/25	
DESIGNED BY	CJG	CHECKED BY	CJG
DRAWN BY	NV	APPROVED BY	JEH
HOR. SCALE: AS NOTED VERTICAL SCALE:		RELEASED FOR CONSTRUCTION BY: J. VEILLEUX	
NO. REVISIONS	DATE	DATE	DATE
01	21-2006-ADDENDUM 6	06/06/30	CMF
00	ISSUED FOR TENDER	06/04/26	NV
		2006/03/10	
		2006/04/26	

<p>THE CITY OF WINNIPEG WATER AND WASTE DEPARTMENT ENGINEERING DIVISION</p>		CITY FILE NUMBER
WEWPC BIOLOGICAL NUTRIENT REMOVAL UPGRADE CONTRACT No. 3		SHEET OF
STRUCTURAL AREA - F PRIMARY SLUDGE FERMENTERS WALKWAY SECTIONS AND DETAILS		CITY DRAWING NUMBER