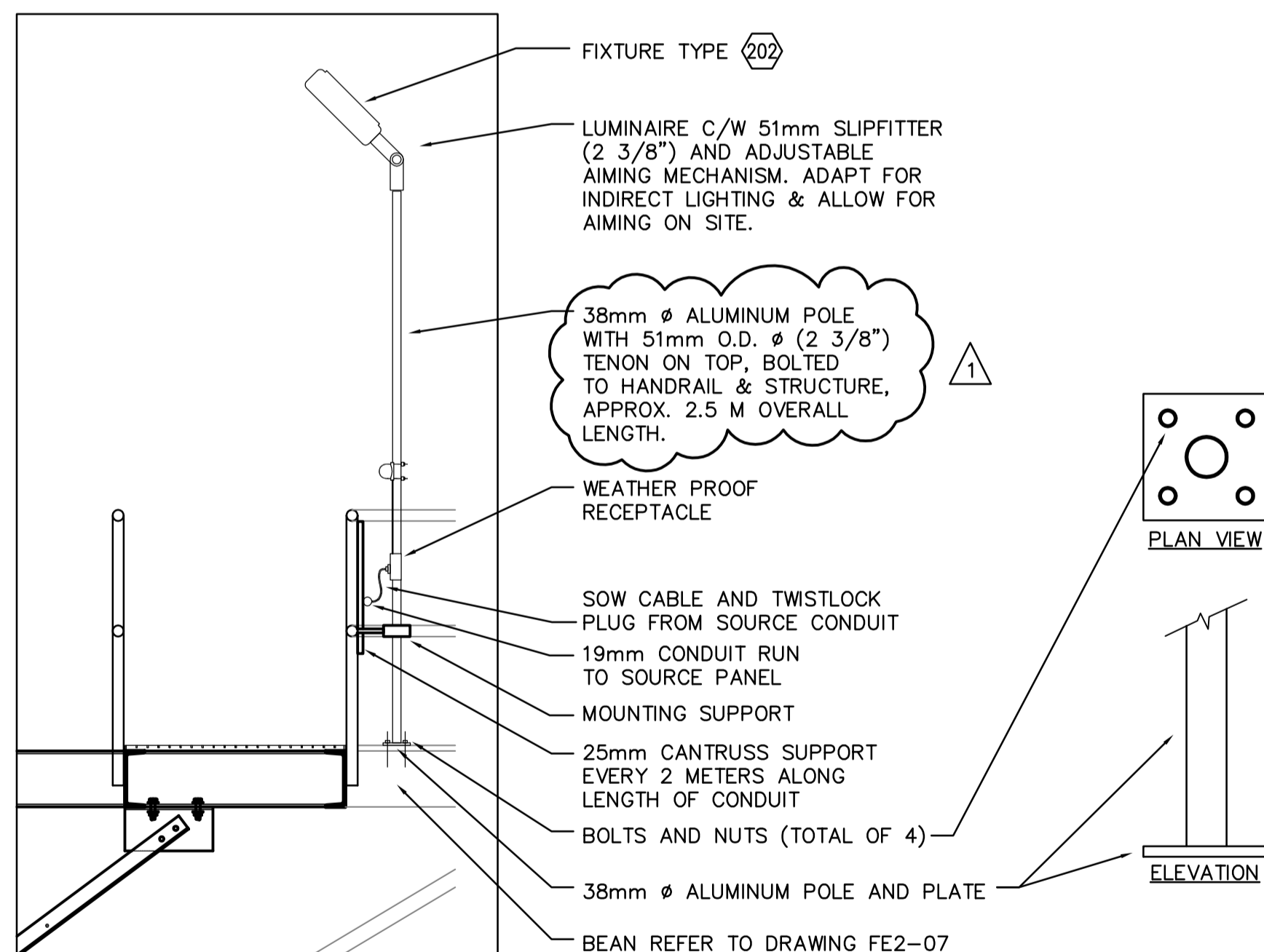
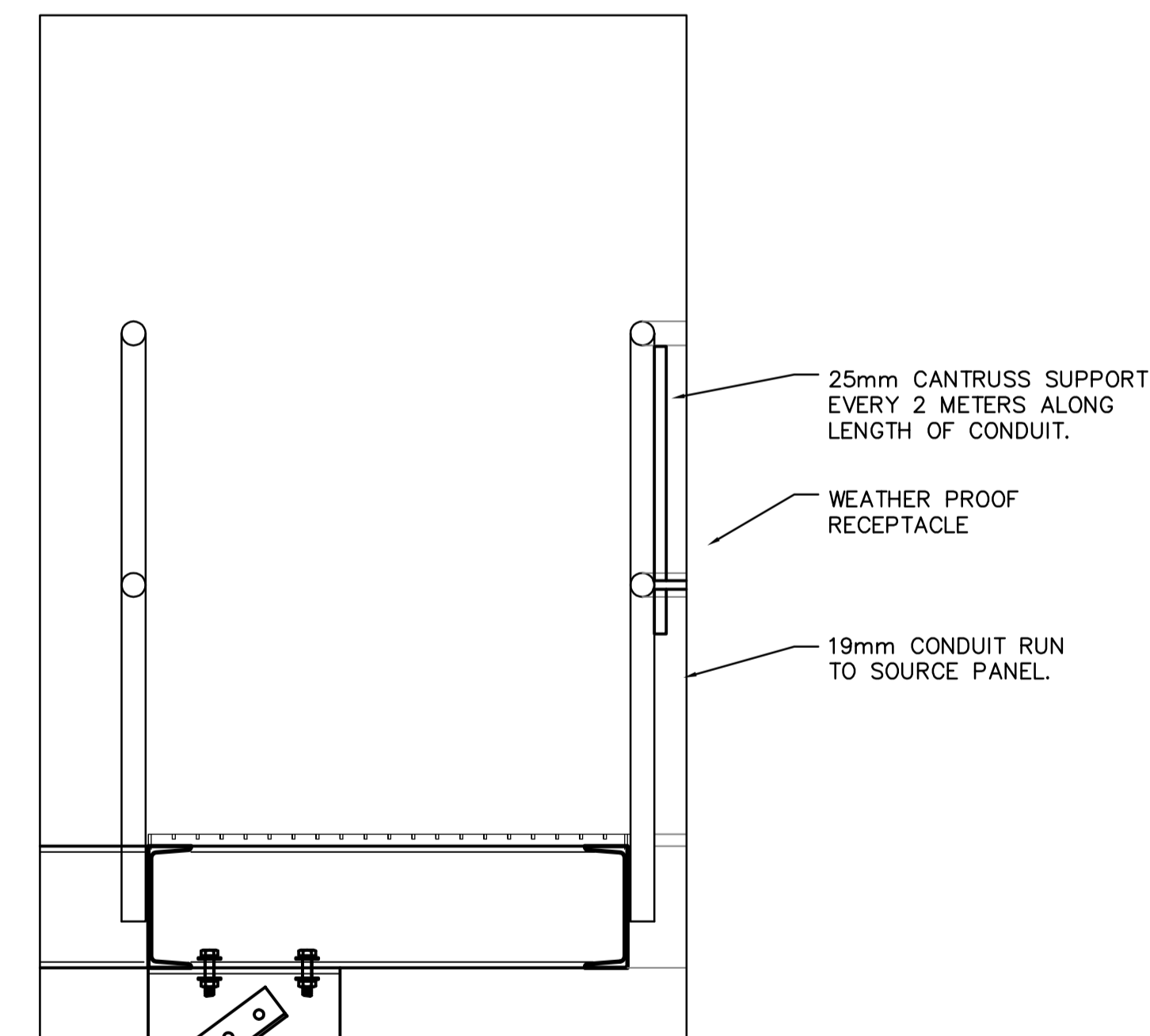


**A** DETAIL – FIXTURE TYPE 201 MOUNTING  
SCALE NTS

LUMINAIRE SCHEDULE							
Type	Manufacturer	Catalogue No.	Voltage	Lamps		Mounting	Remarks
				No.	Type		
101	Metalux	VT2-232DR-347V-TEB8	347V	2	32W-T8	Surface	Vapourtight
102	Metalux	VT2-232DR-120V-TEB8	120V	2	32W-T8	Surface	Vapourtight
201	Cooper Crouse-Hinds	VMVSJ100GP/120	120V	1	100W-HPS	Stanchion	Mounted on centre platform
202	Keene	PHA251LXL-6B	347V	1	250W-HPS	38 mm Aluminum Pole	
203	Holophane	EN-250HP-34-Q-8	347V	1	250W-HPS		
203A	Holophane	EN-250HP-34-Q-8-EM	347V	1	250W-HPS		Provide receptacle adjacent to fixture for quick connection
204	Keene	553 250 LX L 537 P150W 347	347V	1	250W-HPS	500mm above door frame	c/w Wireguard and photocell



**B** DETAIL – FIXTURE TYPE 202 MOUNTING  
SCALE NTS



**C** DETAIL – RECEPTACLE MOUNTING  
SCALE NTS

**APEGM**  
Certificate of Authorization  
Earth Tech Canada Inc.  
No. 730 Expiry: April 30, 2006

B.M. ELEV.		<b>EarthTech</b> A Tyco International Ltd. Company		ENGINEER'S SEAL	
DESIGNED BY: GSN	CHECKED BY: PS	ORIGINAL SIGNED BY: P. STRYK		2006/04/26	
DRAWN BY: ERC	APPROVED BY: JEH	CONSULTANT DRAWING NO. LE2.01		CITY FILE NUMBER	
HOR. SCALE: NTS	RELEASED FOR CONSTRUCTION BY: J. VEILLEUX	CITY DRAWING NUMBER		CITY FILE NUMBER	
NO. REVISIONS	DATE	BY	DATE	DATE	DATE
01	21-2006 ADDENDUM 6	06/07/05	SRP	2006/01/27	2006/04/26
00	ISSUED FOR TENDER	06/04/26	ERC		

**THE CITY OF WINNIPEG**  
WATER AND WASTE DEPARTMENT  
ENGINEERING DIVISION

**WEWPC**  
BIOLOGICAL NUTRIENT REMOVAL UPGRADE  
CONTRACT 3

ELECTRICAL  
AREA L – GENERAL AND SITEWORKS  
LUMINAIRE SCHEDULE AND MOUNTING DETAILS