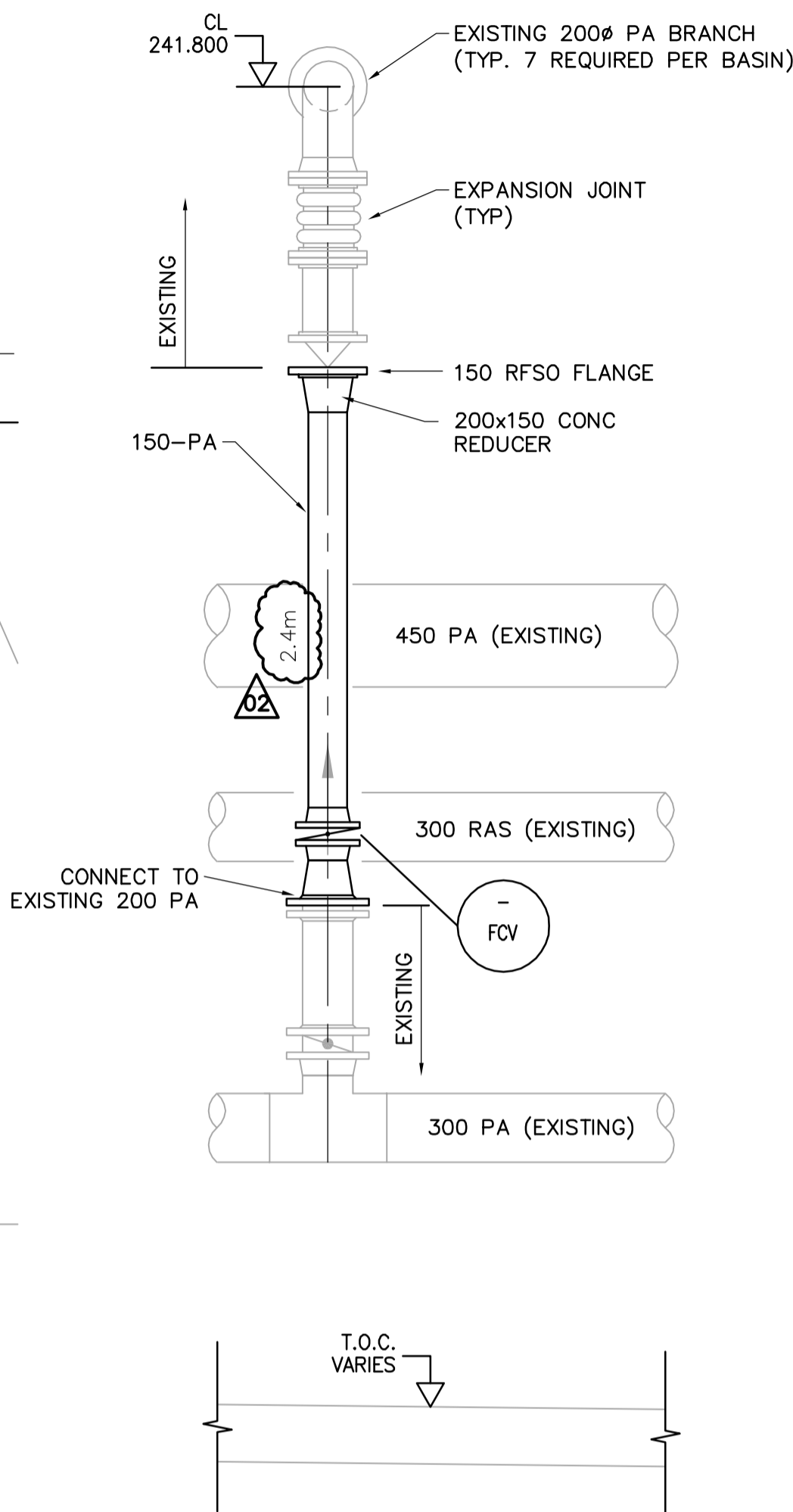
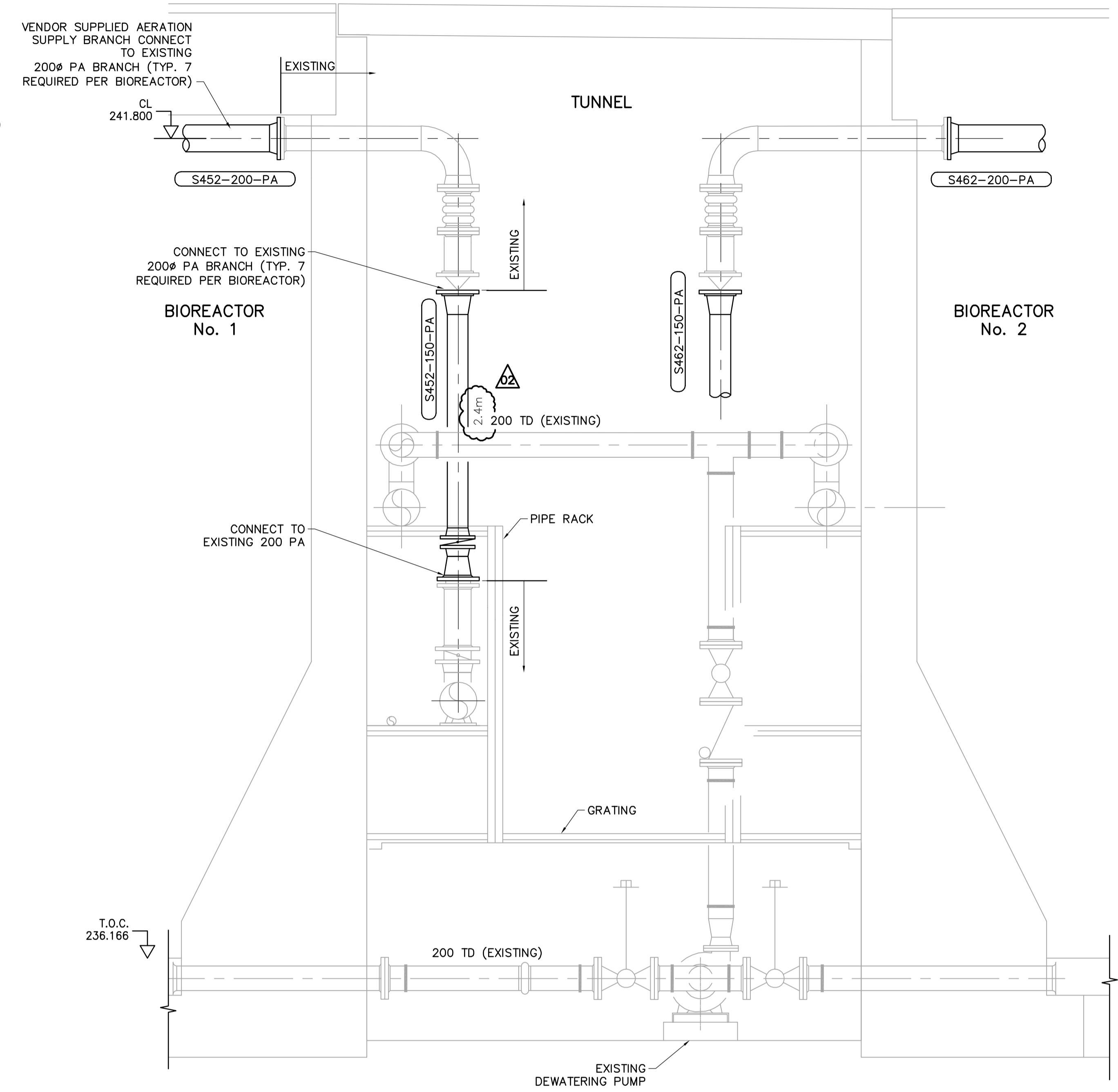


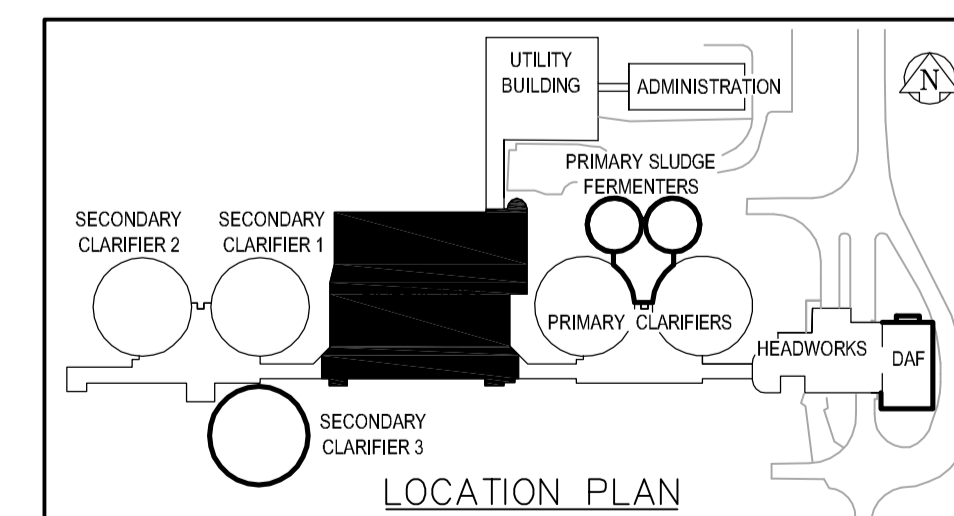
1 SECTION
SP1.04 1:25



3 AERATION HEADER CONNECTION (TYP)
1:25
TYPICAL SECTION OF AERATION SUPPLY
14 AERATION SUPPLY PIPES IN TOTAL



4 SECTION
SP1.02 1:25



GENERAL NOTES

1. CONTRACTOR TO CONFIRM EXISTING PIPE AND EQUIPMENT DIMENSIONS AND LOCATIONS PRIOR TO CONSTRUCTION.

NOTES:
PIPE DIMENSIONS ADDED.
PIPE DIMENSIONS SHOWN ARE TO THE NEAREST 0.1m±

APEGM
Certificate of Authorization
Earth Tech Canada Inc.
No. 730 Expiry: April 30, 2006

B.M. ELEV.		EarthTech A Tyco International Ltd. Company		ENGINEER'S SEAL	
DESIGNED BY	CL	CHECKED BY	KM	ORIGINAL SIGNED BY	P.R. BARSALOU
DRAWN BY	RI	APPROVED BY	JEH	DATE	2006/04/26
HOR. SCALE:	AS NOTED	RELEASED FOR CONSTRUCTION BY:	J. VEILLEUX	CONSULTANT DRAWING NO.	SP1.07
VERTICAL SCALE:		DATE	2005/10/06	DATE	2006/04/26
NO.	REVISIONS	DATE	BY		

THE CITY OF WINNIPEG
WATER AND WASTE DEPARTMENT
ENGINEERING DIVISION

WEWPCC
BIOLOGICAL NUTRIENT REMOVAL UPGRADE
CONTRACT 3

PROCESS
AREA S - BIOREACTORS
CONNECTION DETAILS

CITY FILE NUMBER
SHEET OF
CITY DRAWING NUMBER