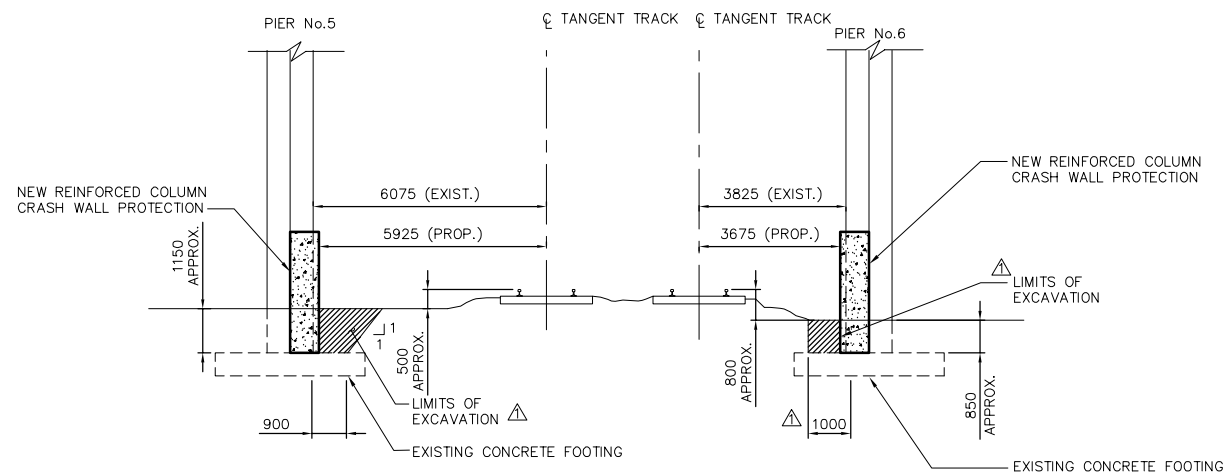
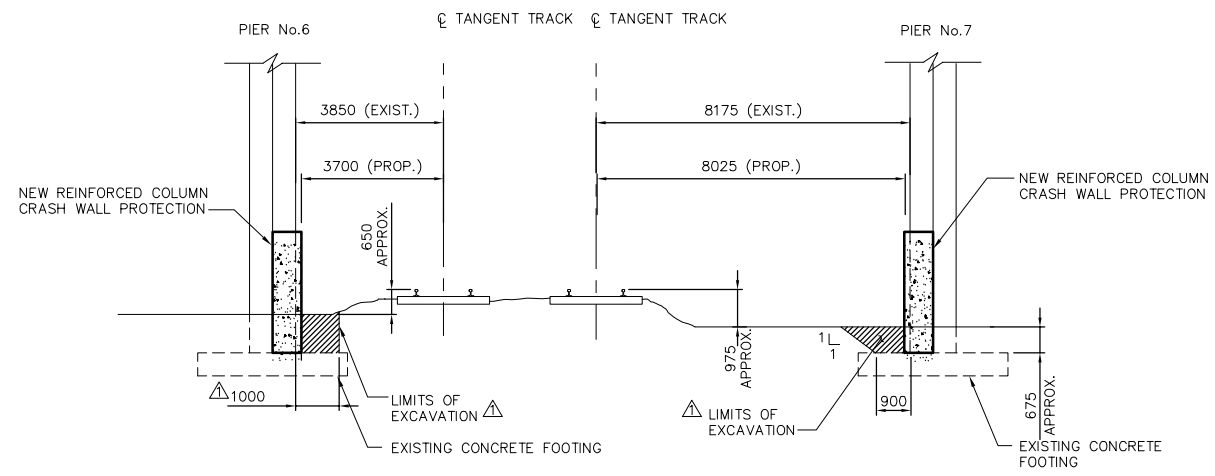


PLAN
SCALE 1:500



NORTH CLEARANCE DIAGRAM
SCALE NTS



SOUTH CLEARANCE DIAGRAM
SCALE NTS

NOTE:
1. MINIMUM VERTICAL CLEARANCE FROM TOP OF RAIL TO UNDERSIDE OF PIER No. 6 TRANSFER BEAM IS 7110.
2. ALL WORKS CARRIED OUT WITHIN 6110 OF @ TRACK REQUIRES FLAGGING PROTECTION BY CPR. TRACK PROTECTION CONSISTING OF TEMPORARY FENCING OR BARRICADES MAY BE UTILIZED FOR WORKS BEYOND THE 6110 LIMIT, AS APPROVED BY CPR.

DESIGN DATA

- SPECIFICATIONS:
1. AASHTO LRFD BRIDGE DESIGN SPECIFICATIONS, THIRD EDITION 2004
2. AREMA MANUAL FOR RAILWAY ENGINEERING 2002
3. CAN/CSA S6-00 CANADIAN HIGHWAY BRIDGE DESIGN CODE 2000
- DESIGN LOAD:
1800 kN PER AASHTO-LRFD
- STRUCTURAL CONCRETE:
f_c' = 35 MPa
CAN/CSA-A23.1-04 TYPE GU (GENERAL USE)
- REINFORCING STEEL:
DEFORMED REINFORCEMENT: CAN/CSA-G30.18-M92 (R2002) GRADE 400W
- STRUCTURAL DESIGN:
1. EXTREME EVENT LIMIT STATE PER AASHTO-LRFD
2. ULTIMATE LIMIT STATE 8 PER CAN/CSA S6-00

APECM
Certificate of Authorization
Earth Tech Canada Inc.
No. 730 Expiry: April 30, 2007

EarthTech
A Tyco International Ltd. Company

DESIGNED BY	AP	CHECKED BY	JB
DRAWN BY	LD	APPROVED BY	
HOR. SCALE:	AS NOTED	RELEASED FOR CONSTRUCTION BY:	B. NEIRINCK, P.Eng.
VERTICAL:	AS NOTED	DATE	2006/08/15
NO. REVISIONS	DATE	BY	DATE
01	ISSUED FOR ADDENDUM	06/08/31	KC
00	ISSUED FOR TENDER	06/08/15	JB
DATE	2006/04/12	DATE	2006/08/15

ENGINEER'S SEAL
PROVINCE OF MANITOBA
ORIGINAL SIGNED BY
POCHANART
Member
3007
15/08/06
REGISTERED PROFESSIONAL ENGINEER

CONSULTANT DRAWING NO.
CT-02

THE CITY OF WINNIPEG
PUBLIC WORKS DEPARTMENT
ENGINEERING DIVISION

SAFETY IMPROVEMENTS
AT THE NAIRN AVENUE OVERPASS

BID OPPORTUNITY
281-2006

SHEET 2 OF 4

OVERALL PLAN AND
CLEARANCE DIAGRAMS

CITY DRAWING NUMBER
B121-06-02