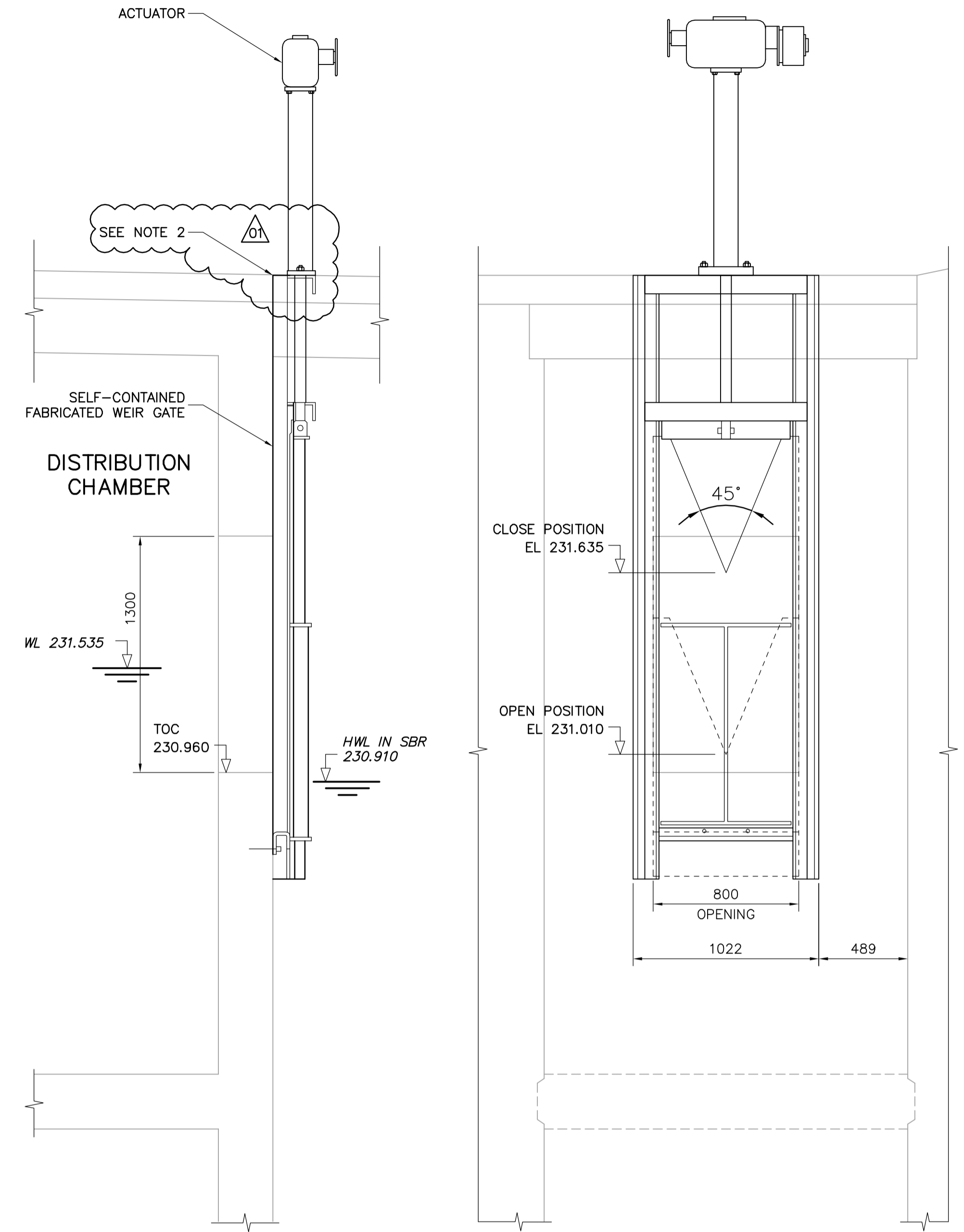


E SECTION
13.01 SCALE 1:100



1 WEIR GATE DETAIL
13.01 SCALE 1:20

NOTES:

- ALL METAL PARTS BENEATH SBR COVERS USED FOR PIPE SUPPORT INCLUDING ANCHORS, RODS AND CLAMPS TO BE SS316. SUBMERGED METAL PARTS IN EQUALIZATION TANK USED FOR PIPE SUPPORT INCLUDING ANCHORS, RODS AND CLAMPS TO BE SS316.
- COORDINATE EXACT OPENING DIMENSIONS WITH GATE SUPPLIER. ACTUATOR TO BE FIXED TO GATE FRAME.

APEGM
Certificate of Authorization
Earth Tech Canada Inc.
No. 730 Expiry: April 30, 2007

B.M. ELEV.			
01	291-2006 ADDENDUM 3	06/07/12	LAE
00	ISSUED FOR TENDER	06/05/15	GLG
NO.	REVISIONS	DATE	BY

EarthTech
A Tyco International Ltd. Company

DESIGNED BY	YL	CHECKED BY	SB
DRAWN BY	SRP	APPROVED BY	JEH
SCALE:	AS NOTED	RELEASED FOR CONSTRUCTION BY:	K. MARTENS
DATE	2006/01/16	DATE	2006/05/15

ENGINEER'S SEAL
ORIGINAL SIGNED BY
J.E. HUTCHISON
2006/05/15
CONSULTANT DRAWING NO.
P14.03

THE CITY OF WINNIPEG
WATER AND WASTE DEPARTMENT
ENGINEERING DIVISION

NEWPCC CENTRATE NUTRIENT TREATMENT NITROGEN REMOVAL FACILITY

PROCESS
PROCESS TANK SECTIONS & DETAILS
SHEET 3

CITY FILE NUMBER	
SHEET OF	
CITY DRAWING NUMBER	