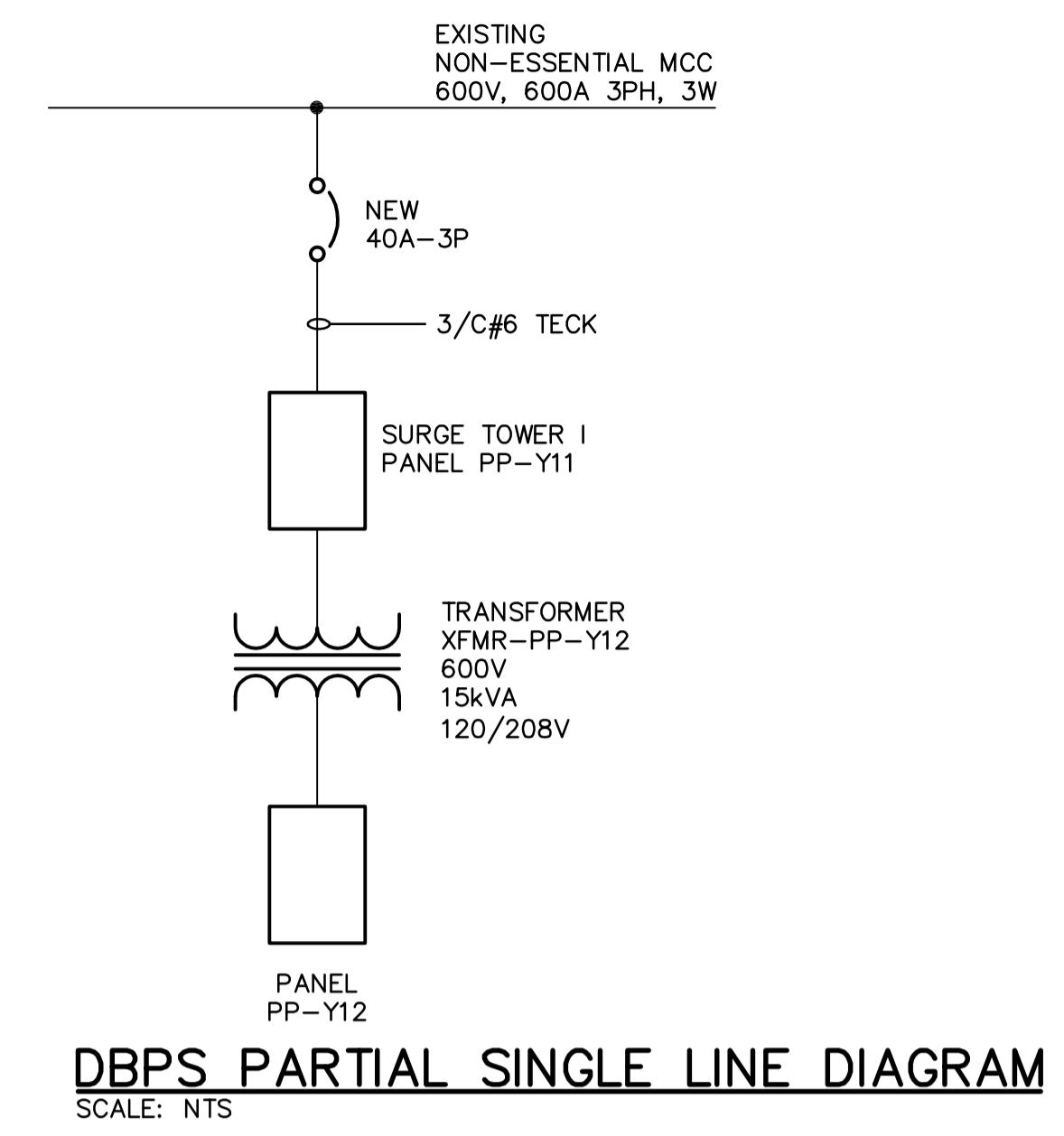


SITE PLAN
SCALE: 1:250



DBPS PARTIAL SINGLE LINE DIAGRAM
SCALE: NTS

PANEL SCHEDULE										
Panel PP-Y11										
DESCRIPTION	LOAD	BKR	CCT	A	B	C	CCT	BKR	LOAD	DESCRIPTION
TRANSFORMER XFMR-PP-Y12	15kVA	20	1	*			2	15A		Actuator Valve FV-Y011A
		3P	3	*	*	*	4	3P		
			5	*	*	*	6			
TVSS		30	7	*	*	*	8			
		3P	9	*	*	*	10			
			11	*	*	*	12			
		15	13	*	*	*	14			
		15	15	*	*	*	16			
Spare		15	17	*	*	*	18			
Spare		15	19	*	*	*	20	40A		Main Breaker
Space		-	21	*	*	*	22	3P		
Space		-	23	*	*	*	24			

Voltage: 600/347V/3Ø/3 wire Feeder: 3/C#6
 Mains: 225A Main Breaker: 40A-3P
 Location: Surge Tower Electrical Room Power Source: DBPS
 Mounting: Surface

PANEL SCHEDULE										
Panel PP-Y12										
DESCRIPTION	LOAD	BKR	CCT	A	B	C	CCT	BKR	LOAD	DESCRIPTION
Lighting	1000W	15	1	*			2	15	2	Receptacle
Lighting	1200W	15	3	*	*	*	4	15	1	Receptacle
Lighting - Electrical Room	200W	15	5	*	*	*	6	15	2	Receptacle
Lighting - Exterior	300W	15	7	*	*	*	8	15		Spare
Air Relief Vent Grate Heating	600W	15	9	*	*	*	10	20	5kW	Electrical Room Heater
Air Relief Vent Grate Heating	400W	15	11	*	*	*	12	3P		3/C#12 Teck
Spare		15	13	*	*	*	14			
Spare		15	15	*	*	*	16	30		TVSS
Spare		15	17	*	*	*	18	3P		
Spare		15	19	*	*	*	20			
Space		-	21	*	*	*	22	-		Space
Space		-	23	*	*	*	24	-		Space

Voltage: 120/208V/3Ø/4 wire Feeder: 3/C#6
 Mains: 225A Main Breaker: N/A
 Location: Surge Tower Electrical Room Power Source: Transformer XFMR-PP-Y12
 Mounting: Surface

- NOTES:**
- APPROXIMATE LOCATION OF EXISTING ELECTRICAL SERVICE CABLE FOR EXISTING TRAILER TO BE RELOCATED. POWER CAN BE USED BY CONTRACTOR DURING CONSTRUCTION. CABLE AND SUPPORTS BACK TO PANELBOARD SHALL BE REMOVED AT COMPLETION. RESTORE TRENCH SURFACES AFTER CABLE REMOVAL. REFER TO DRAWING CM-G003 AND CLAUSE E14 IN SPECIFICATIONS.
 - TERMINATE 6PR #16 SHIELDED INSTRUMENTATION TECK AND 15/C #14 TECK FROM TJB-Y11 IN TJB-Y21.
 - TERMINATE 4/C #14 TECK IN MAIN CONTROL PANEL.
 - PROVIDE SUFFICIENT CABLE IN DRV-305 FOR CONNECTION OF VALVE ACTUATOR AND FLOOD SWITCH. FINAL TERMINATION BY OTHERS. PROTECT CABLE FROM DAMAGE DUE TO WET ENVIRONMENT.
 - APPROXIMATE LOCATION OF EXISTING ELECTRICAL AND COMMUNICATION CABLES FOR CHEMICAL FEED BUILDING TO BE ABANDONED. INSTALL NEW CABLES AND VERIFY OPERATION BEFORE REMOVAL.
 - EXISTING ELECTRICAL CABLE TO BE IDENTIFIED BY CONTRACTOR PRIOR TO REMOVAL.
 - TERMINATE PVC CONDUITS AT FENCE LINE. CAP OPEN ENDS.
 - INSTALL NETWORK TERMINATION CABINET IN CONTROL ROOM. LOCATION TO BE SPECIFIED BY CONTRACT ADMINISTRATOR. INSTALL CAT5E CABLE FROM NEW ETHERNET SWITCH TO MAIN CONTROL PANEL.
 - CORE OPENING IN BUILDING WALL AT 1 METRE BELOW GRADE. PROVIDE ROSTEK RS SEALS, SIZED TO SUIT CABLES.
 - PROVIDE MINIMUM 300 MM EXCESS CABLE IN TRENCH ABOVE FUTURE 1350 OVERFLOW PIPE.

LUMINAIRE SCHEDULE						
Type	Manufacturer	Catalogue No.	Voltage	Lamps	Mounting	Remarks
1	Cooper Lighting	MPEH-R22-PL-250-120V-FL-1-PHC-TPPH-120V	120	No. Type	Pendant Mounted	Provide safety chain option "SC"
		c/w 250W MH Lamp		1 250W MH		
2	Cooper Lighting	MPEH-R22-PL-250-120V-FL-1-PHC-TPPH-120V-Q	120	1 250W MH	Pendant Mounted	Provide safety chain option "SC"
		c/w 250W MH Lamp & Aux. Quartz lamp		100W Quartz		
3	Cooper Lighting	ENV 150 MH 120 EB FTP BZ	120	1 150W HPS	Wall Mounted	Install 500mm above door frame
4	Cooper Lighting	IC VW 1 G	120	1 200W A21	Wall Mounted	
5	Lithonia Lighting	LV S BW 1 R 120 LDC12 CSA 4X	120	LED	Wall mounted	200mm above door frame
6	Lithonia Lighting	ELU4X-WL-2H1212-VM-LD	120V/	2 12V Halogen	Wall Mounted	Provide cabtire cable (1 metre) with twistlock receptacle
7			12V DC			
8	Lithonia Lighting	ELA-T-H1212	12V DC	2 12V Halogen	Wall Mounted	

<p>APEGM Certificate of Authorization Earth Tech Canada Inc. No. 730 Expiry: April 30, 2007</p>	<p>Frederickson Cooper ARCHITECTS</p>	<p>EarthTech A Fluor International Ltd. Company</p>	ENGINEER'S SEAL ORIGINAL SIGNED BY B.L. MOORE 2006/05/03	<p>THE CITY OF WINNIPEG WATER AND WASTE DEPARTMENT ENGINEERING DIVISION</p>	
			DESIGNED BY: BLM CHECKED BY: PS DRAWN BY: ERC APPROVED BY: AHL		CITY FILE NUMBER SHEET OF
			SCALE: AS SHOWN RELEASED FOR CONSTRUCTION BY: R.SOROKOWSKI		CITY DRAWING NUMBER 1-0601Y-A-E010-001-02D

CONSULTANT DRAWING NO. WY-E0110
 ELECTRICAL SITE PLAN, SCHEDULES AND DETAILS