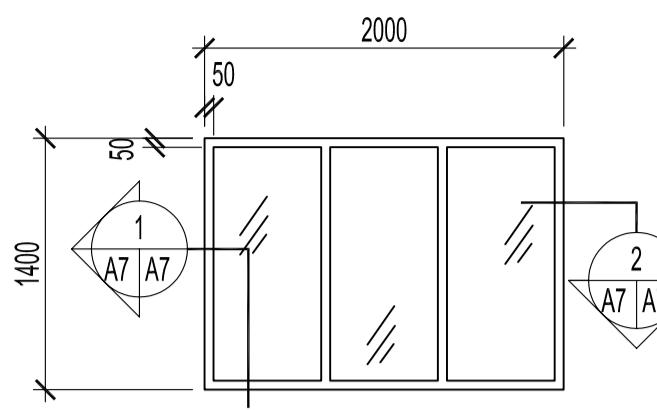


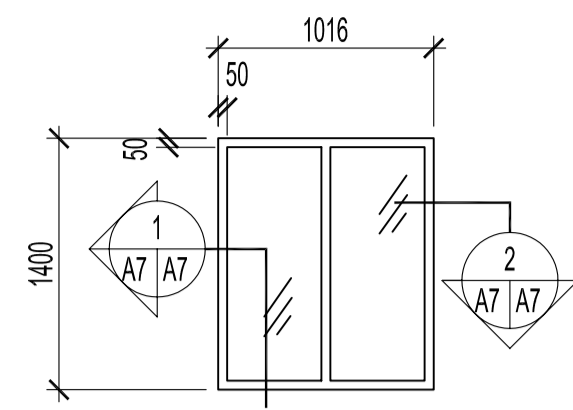
ROOM FINISH SCHEDULE										
ROOM NO.	ROOM NAME	FLOOR	BASEBOARD	NORTH WALL	SOUTH WALL	EAST WALL	WEST WALL	CEILING	CEILING HEIGHT	NOTES
<b>BASEMENT LEVEL</b>										
B01	STAIR #2			PT.	PT.	PT.	PT.	PT.	2700	
B02	ELECTRICAL ROOM			PT.						
B03	FURNACE ROOM			PT.						
B04	BASEMENT								2850 / 2700	PAINT GB. WALLS ONLY
B05	WOMEN'S WASHROOM	EPOXY	150 EPOXY COVE	C.T. & PT.	C.T. & PT.	C.T. & PT.	C.T. & PT.	PT.	2700	
B05A	SHOWER			C.T. & PT.	C.T. & PT.		C.T. & PT.			
B06	MEN'S WASHROOM	EPOXY	150 EPOXY COVE	C.T. & PT.	C.T. & PT.	C.T. & PT.	C.T. & PT.	PT.		
B06A	SHOWER			C.T. & PT.	C.T. & PT.		C.T. & PT.			
B07	STAIR #1			PT.	PT.	PT.	PT.			
B08	STORAGE			PT.	PT.	PT.	PT.			
<b>MAIN LEVEL</b>										
101	CONTROL ROOM	EPOXY	150 EPOXY COVE	PT.	PT.	PT.	PT.	PT.	8530	
102	RECEPTION								2800	
103	ENTRANCE			PT.						
104	STORAGE									
105	CAPTAIN'S OFFICE									
106	CAPTAIN'S QUARTERS #1									
107	CAPTAIN'S QUARTERS #2									
108	CAPTAIN'S LOCKERS									
109	TRAINING ROOM / FIRE PREVENTION OFFICE									
110	CORRIDOR									
111	TELEPHONE									
112	PUBLIC BARRIER-FREE WASHROOM			C.T. & PT.	C.T. & PT.	C.T. & PT.	C.T. & PT.			
113	PUBLIC HEALTH			PT.	PT.	PT.	PT.			
114	JANITOR		1800 EPOXY	EPOXY & PT.	EPOXY & PT.	EPOXY & PT.	EPOXY & PT.			
115	CHANGE	EPOXY NS.	150 EPOXY COVE	C.T. & PT.	C.T. & PT.	C.T. & PT.	C.T. & PT.			
116	MEN'S WASHROOM	EPOXY		C.T. & PT.	C.T. & PT.	C.T. & PT.	C.T. & PT.			
116A	SHOWERS			C.T. & PT.	C.T. & PT.	C.T. & PT.	C.T. & PT.			
117	KITCHEN			PT.	PT.	PT.	PT.			
118	DINING ROOM									
119	LOUNGE									
120	DORMITORY ROOM #1									
121	DORMITORY ROOM #2									
122	DORMITORY ROOM #3									
123	DORMITORY ROOM #4									
124	CORRIDOR								2400 & 2800	
125	VESTIBULE								2400	
126	WOMEN'S WASHROOM			C.T. & PT.	C.T. & PT.	C.T. & PT.	C.T. & PT.			
126A	SHOWER			C.T. & PT.	C.T. & PT.	C.T. & PT.	C.T. & PT.			
127	CORRIDOR	C.H.		PT.	PT.	PT.	PT.			
128	DRYING ROOM	C.H.		PT.	PT.	PT.	PT.			
129	APPARATUS ROOM	C.H.		A.C.	A.C.	A.C.	A.C.		5240	
130	STORAGE ROOM	C.H.		A.C.	A.C.	A.C.	A.C.		3810	
<b>MEZZANINE LEVEL</b>										
M01	MEZZANINE	C.H.		PT.	PT.	PT.	PT.	PT.	2640	
M02	FURNACE ROOM	C.H.		PT.	PT.	PT.	PT.	PT.	2640	

ABBREVIATIONS	
A.C. - ACRYLIC COATING AS PER SPECS.	EPOXY - EPOXY COATING AS PER SPECS.
C.H. - CONCRETE W/ HARDENER AS PER SPECS.	EPOXY NS. - EPOXY COATING NON-SLIP AS PER SPECS.
C.T. - CERAMIC TILE	PT. - PAINT

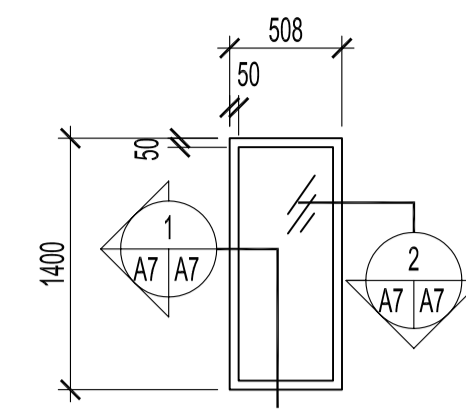
INTERIOR WINDOW TYPES



SC1-HOLLOW METAL FRAME, (PAINT FINISH)  
6 WIRED GLAZING  
1 HR. FIRE RATING

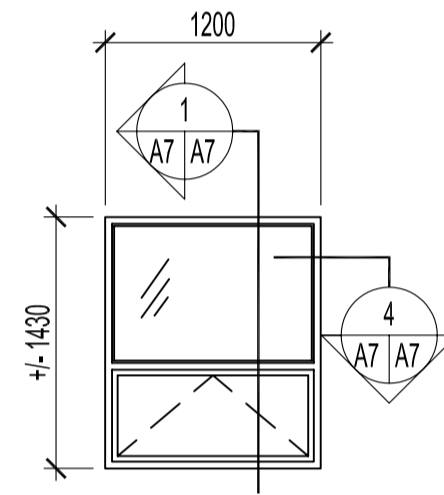


SC2-HOLLOW METAL FRAME, (PAINT FINISH)  
6 WIRED GLAZING  
3/4 HR. FIRE RATING

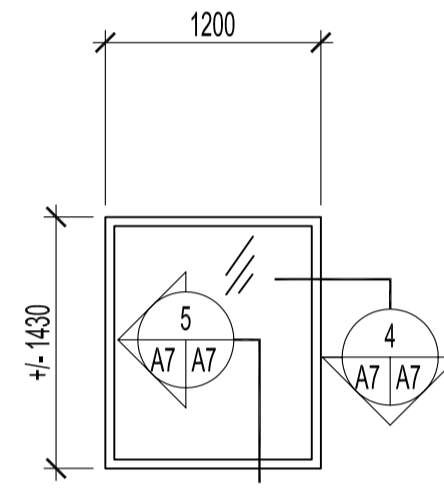


SC3-HOLLOW METAL FRAME, (PAINT FINISH)  
6 WIRED GLAZING  
3/4 HR. FIRE RATING

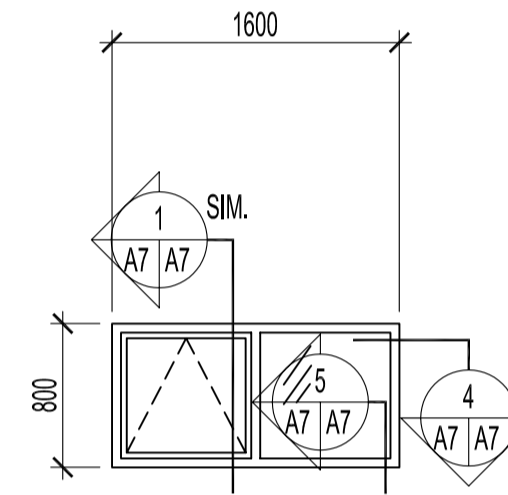
EXTERIOR WINDOW TYPES



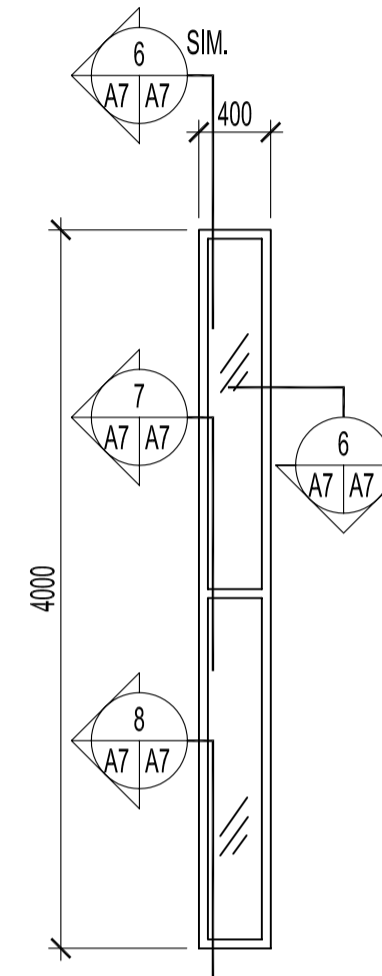
W1  
FIBERGLAS CASEMENT AWNING,  
DUAL PANE



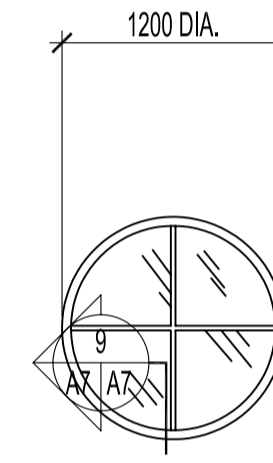
W2  
FIBERGLAS FIXED  
CASEMENT, DUAL PANE



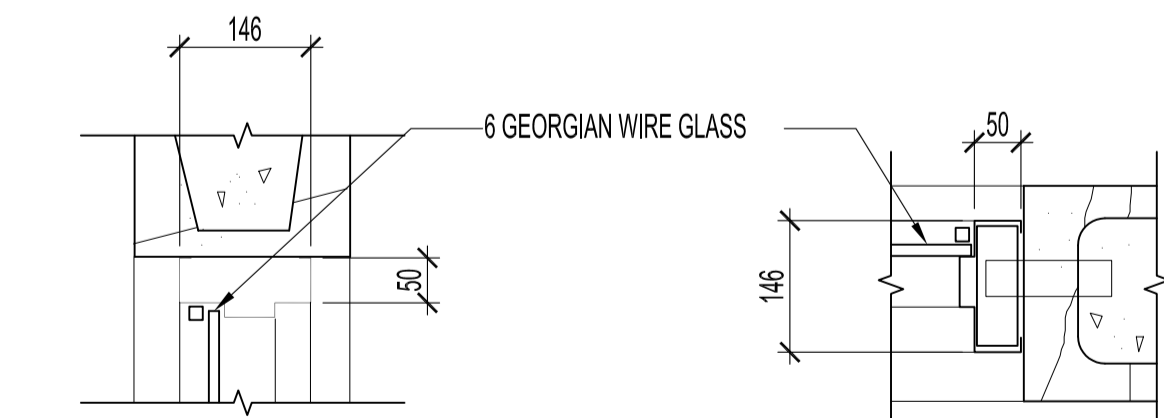
W3  
FIBERGLAS CASEMENT AWNING,  
DUAL PANE



W4  
FIBERGLAS FIXED  
CASEMENT, DUAL PANE

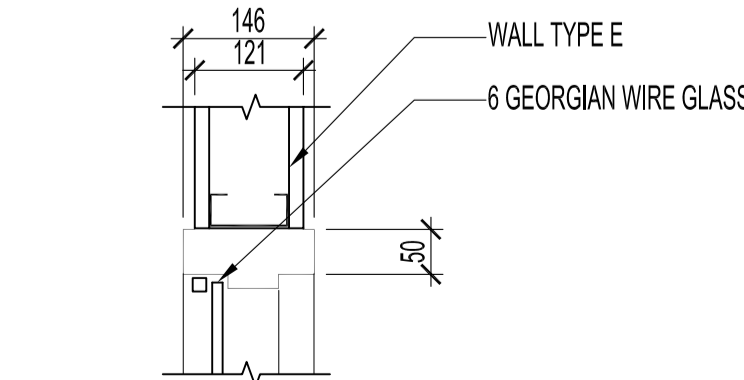


W5  
FIBERGLAS FIXED  
CASEMENT, DUAL PANE

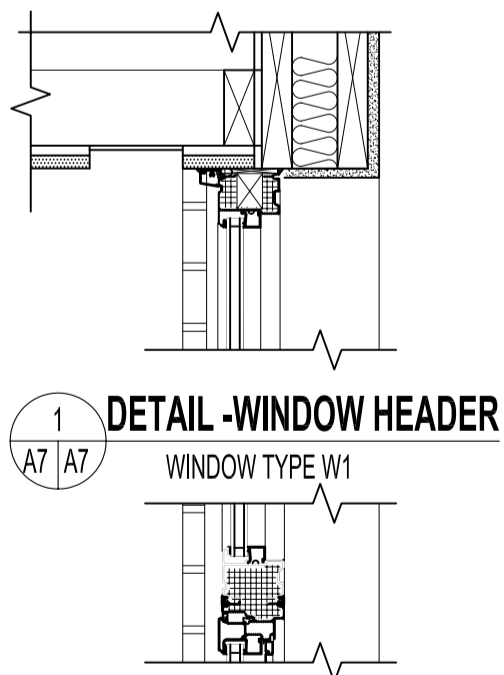


1 DETAIL - WINDOW HEAD/ SILL  
ALL DETAILS ARE SCALED AT 1:10  
WINDOW TYPES SC1 & SC2

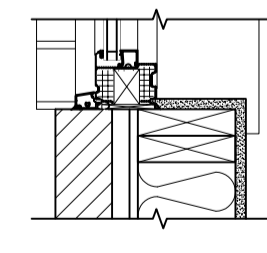
2 DETAIL - WINDOW JAMB  
WINDOW TYPES SC1 & SC2



1 DETAIL - WINDOW HEAD/ SILL/ JAMB  
WINDOW TYPES SC1 & SC2  
ENTRANCE 103 & CAPTAIN'S OFFICE 105

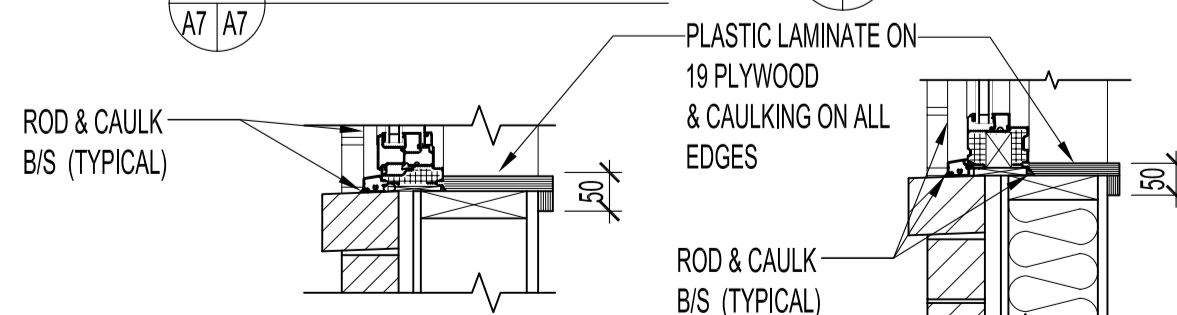


1 DETAIL - WINDOW HEADER  
WINDOW TYPE W1



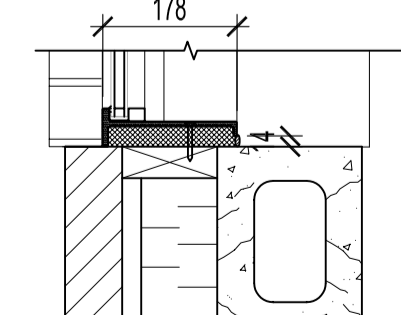
4 DETAIL - WINDOW JAMB

2 DETAIL - WINDOW MULLION

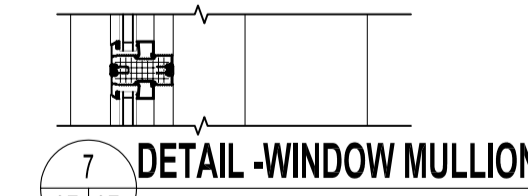


3 DETAIL - WINDOW SILL

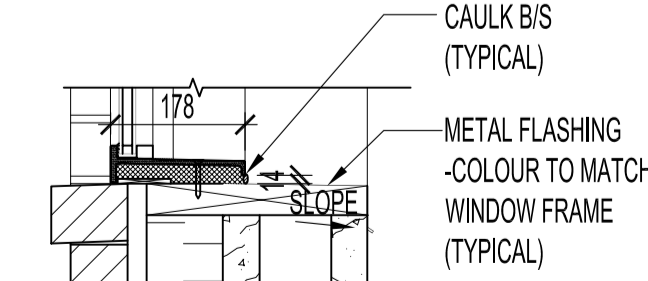
5 DETAIL - WINDOW SILL



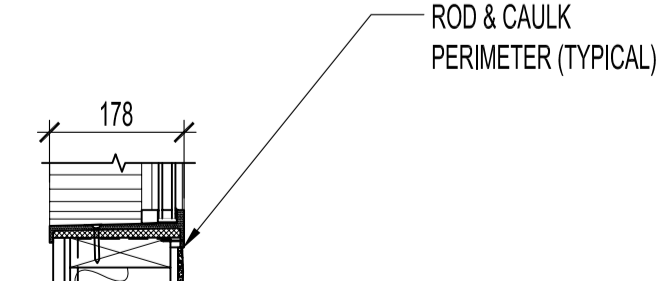
6 DETAIL - WINDOW JAMB



7 DETAIL - WINDOW MULLION



8 DETAIL - WINDOW SILL



9 DETAIL - SPHERICAL WINDOW JAMB

METRIC  
WHOLE NUMBERS ARE IN MILLIMETRES,  
DECIMALIZED NUMBERS ARE IN METRES

NOTES :

GENERAL NOTES:

1. FOR ALL FLOOR, WALL & CEILING FINISHES & TYPES, REFER TO SPECIFICATIONS.

ORIGINAL STAMPED BY: R. K. FOK LI Arch.  
DATE: 2006.08.15

CHANGE EPOXY FLOOR FINISH IN ROOMS 127 & 128 TO (C.H.) CONCRETE HARDENER FINISH MKK 2006.08.15  
DELETE EPOXY BASE FINISH IN ROOMS 127 & 128

NO.	REVISION/DESCRIPTION	BY	DATE
SEALS			

DRAWN BY MKK  
DATE 2006.08.15  
CHECKED BY USER APPROVAL  
APPROVED

CITY OF WINNIPEG  
PLANNING, PROPERTY & DEVELOPMENT DEPARTMENT  
CIVIC ACCOMMODATIONS DIVISION  
300 - 65 GARRY ST. R3C 4K4

PROJECT  
WEST TRANSCONA  
FIRE PARAMEDIC STATION 21

1446 REGENT AVENUE W.

SHEET TITLE  
ROOM FINISH SCHEDULE  
WINDOW DETAILS

SCALE AS SHOWN  
PROJECT NO. 2004-058  
SHEET NO. A7R1