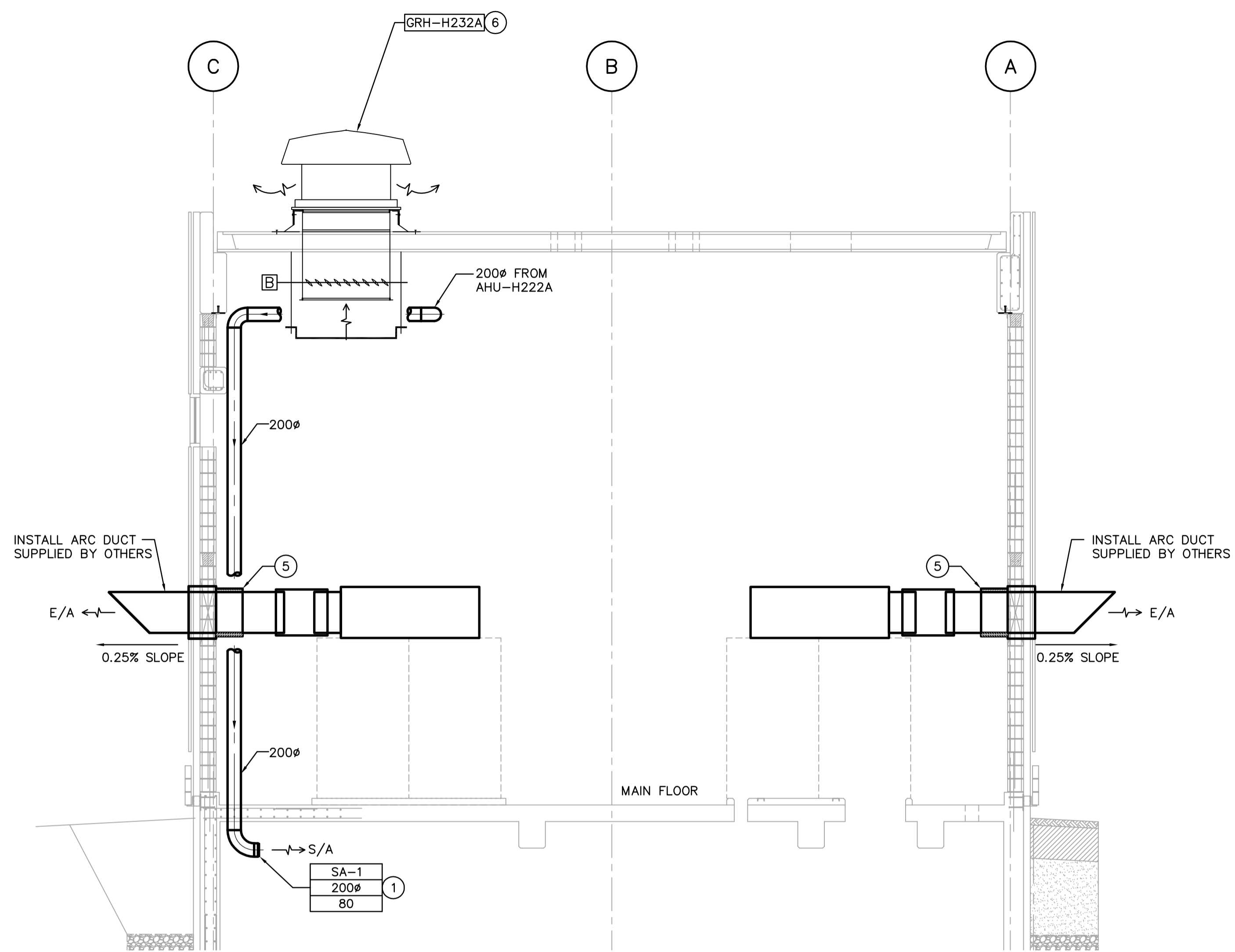


E SECTION
WG-H0120,140 1:50



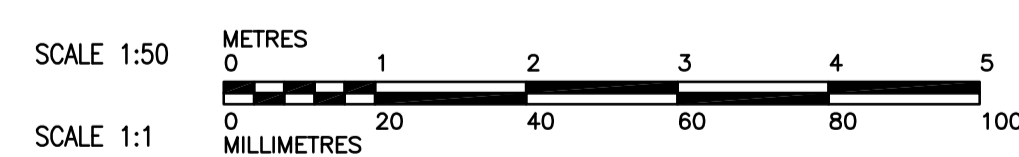
F SECTION
WG-H0120 1:50

DRAWING NOTES

- 1 13mm SQUARE WIRE MESH WELDED TO END.
- 2 SEE DRAWING WG-H0401 DETAIL 3.
- 3 SEE DRAWING WG-H0401 DETAIL 5.
- 4 INSULATE ALL SUPPLY AIR DUCT WITH 25mm FOIL FACED INSULATION.
- 5 INSULATE ARC DUCT 400mm INTO BUILDING FROM PENETRATION TO OUTSIDE WITH 25MM FOIL FACED INSULATION.
- 6 915x1220 RELIEF AIR HOOD ON ROOF c/w BACK DRAFT DAMPER. TERMINATE INTAKE OPENING APPROX. 600mm BELOW ROOF DECK. SEE DRAWING WG-H402 DETAIL 5.
- 7 EXTEND REFRIGERANT SUCTION, LIQUID AND HOT GAS PIPING DOWN THROUGH A ROOF CURB & MOLDED CAP TYPE SYSTEM TO AHU-H222A. SEE WG-H401 DETAIL 6.

GENERAL NOTES

1. COORDINATE WITH OTHER TRADES SO AS TO PREVENT CONFLICTS.
2. ALL DUCTWORK SHALL BE SUPPORTED AND SUSPENDED AS PER SPECIFICATIONS AND LOCAL CODES (SEE DETAILS).



B.M. ELEV.	CH2M HILL Frederickson Cooper ARCHITECTS		EarthTech A Tyco International Ltd. Company		ENGINEER'S SEAL
	DESIGNED BY AB/LJW	CHECKED BY AMA, PVL	ORIGINAL SIGNED BY A. BURACHYNSKY		2006/08/30
	DRAWN BY LJW	APPROVED BY AHL	CONSULTANT DRAWING NO. WG-H0203		
	SCALE: AS NOTED	RELEASED FOR CONSTRUCTION BY: R. SOROKOWSKI			
01 498-2006 ADDENDUM 3 06/09/28 DC	DATE 2006/05/29	DATE 2006/08/30			
00 ISSUED FOR TENDER 06/08/28 LJW					
NO. REVISIONS	DATE	BY			

THE CITY OF WINNIPEG
WATER AND WASTE DEPARTMENT
ENGINEERING DIVISION

WATER TREATMENT PLANT
STANDBY POWER GENERATOR

MECHANICAL
VENTILATION SECTIONS

CITY FILE NUMBER
SHEET OF
CITY DRAWING NUMBER
1-0601G-A-H0203-001-01D