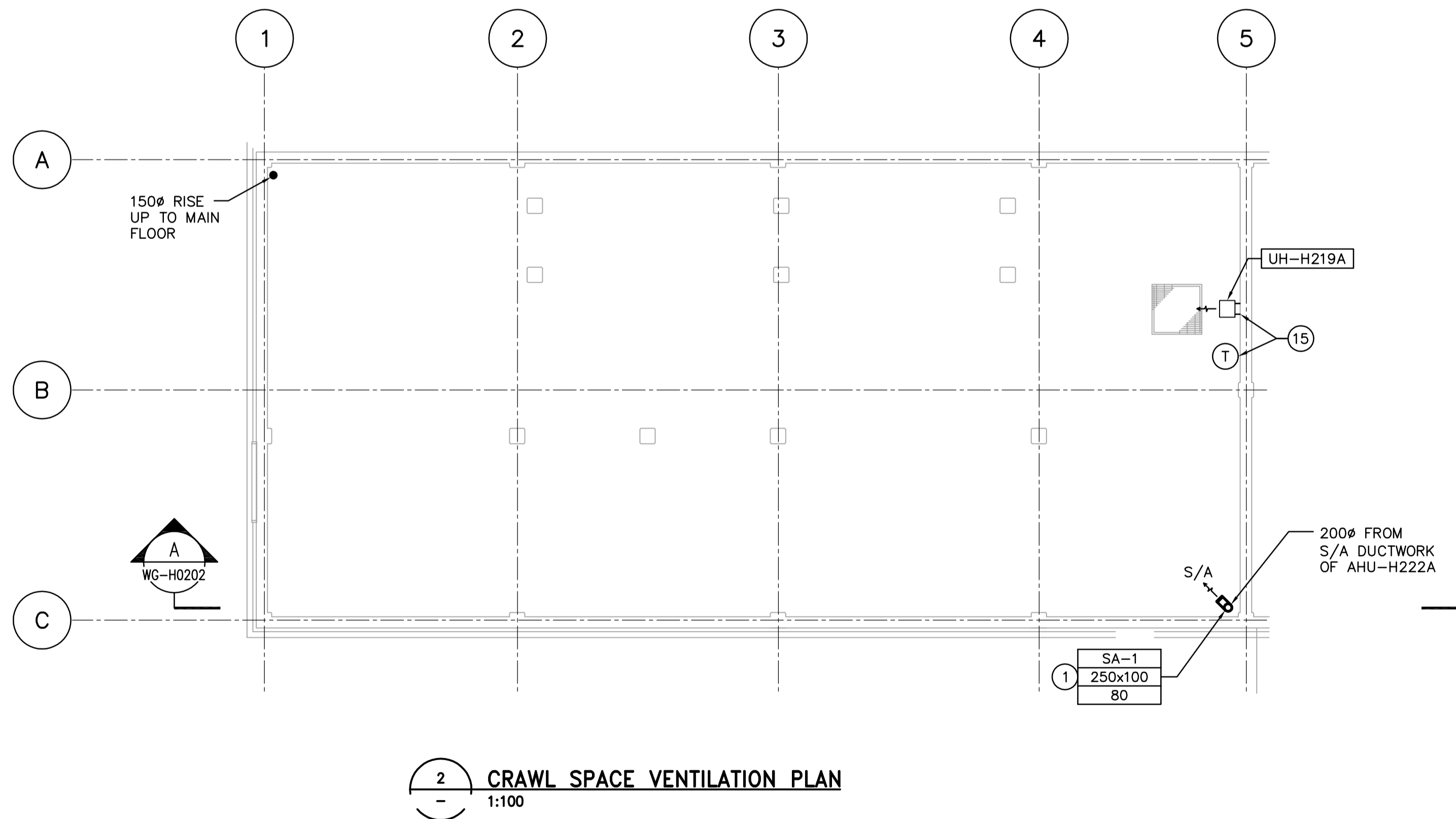


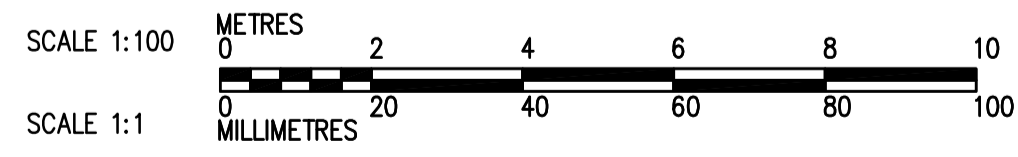
1 MAIN FLOOR VENTILATION PLAN
1:100



2 CRAWL SPACE VENTILATION PLAN
1:100

- ### DRAWING NOTES
- 13mm SQUARE WIRE MESH WELDED TO END.
 - LOUVER AND DAMPER INSTALLATION SEE DRAWING WG-H0402 DETAIL 2.
 - 915x1220 RELIEF AIR DUCT RISING TO RELIEF AIR HOOD ON ROOF c/w MOTORIZED DAMPER. TERMINATE INTAKE OPENING APPROXIMATELY 600mm BELOW ROOF DECK. SEE DRAWING WG-H0402 DETAIL 5.
 - CONTINUOUS LOUVER 3660 HIGHx25775 LONG, SEE ARCH DRAWING WG-B0301.
 - CONTINUOUS LOUVER 3660 HIGHx5175 LONG, SEE ARCH DRAWING WG-B0301.
 - CONTINUOUS LOUVER 3050 HIGHx22700 LONG, SEE ARCH DRAWING WG-B0301.
 - BLIND OUT WITH 16 GA GALVALIZED SHEET METAL.
 - INSULATE ALL SUPPLY AIR DUCT WITH 25mm FOIL FACED INSULATION.
 - EXTEND REFRIGERANT SUCTION, LIQUID AND HOT GAS PIPING UP THROUGH A ROOF COLLAR & BOOT TYPE SYSTEM TO CONDENSING UNITS. SEE WG-H401 DETAIL 6.
 - DDC (BAS) CONTROL PANEL WIRE TO UPS POWER PANEL (SEE DIV. 16 FOR CIRCUIT).
 - ONE HOUR MANUAL OVER-RIDE WIND-UP TIMER.
 - INSULATE ARC DUCT WITH 25mm THICK FOIL FACED INSULATION STARTING FROM WALL RIGID INSULATION. TERMINATE 400mm FROM INTERIOR WALL SURFACE.
 - THERMOSTAT TO BE MOUNTED ON R/A INLET TO UNIT HEATER.
 - DUPLEX SUMP CONTROL PANEL FOR SUMP PUMPS IN CRAWL SPACE.
 - UNIT HEATER AND THERMOSTAT TO BE WIRED UP TO CONTROL PANEL ABOVE.
 - CONTROL WIRING TO EF-H226A ON ROOF.
 - CONTROL WIRING TO MOTORIZED DAMPER IN GRAVITY HOOD.

- ### GENERAL NOTES
- COORDINATE WITH OTHER TRADES SO AS TO PREVENT CONFLICTS.
 - ALL DUCTWORK SHALL BE SUPPORTED AND SUSPENDED AS PER SPECIFICATIONS AND LOCAL CODES (SEE DETAILS).



B.M. ELEV.	 Frederickson Cooper ARCHITECTS		 A Tyco International Ltd. Company		ENGINEER'S SEAL
	DESIGNED BY	AB/LJW	CHECKED BY	AMA, PVL	ORIGINAL SIGNED BY
	DRAWN BY	LJW	APPROVED BY	AHL	A. BURACHYNSKY
	SCALE:	1:100	RELEASED FOR CONSTRUCTION BY:	R. SOROKOWSKI	2006/08/30
02 498-2006 ADDENDUM 4	06/10/10	DC			
01 498-2006 ADDENDUM 3	06/09/28	DC			
00 ISSUED FOR TENDER	06/08/28	LJW			
NO. REVISIONS	DATE	BY	DATE	2006/05/29	DATE 2006/08/30
					CONSULTANT DRAWING NO. WG-H0120

THE CITY OF WINNIPEG
 WATER AND WASTE DEPARTMENT
 ENGINEERING DIVISION

WATER TREATMENT PLANT
 STANDBY POWER GENERATOR

MECHANICAL
 VENTILATION PLAN

CITY FILE NUMBER
 SHEET OF
 CITY DRAWING NUMBER
 1-0601G-A-H0120-001-02D