

GENERAL NOTES:

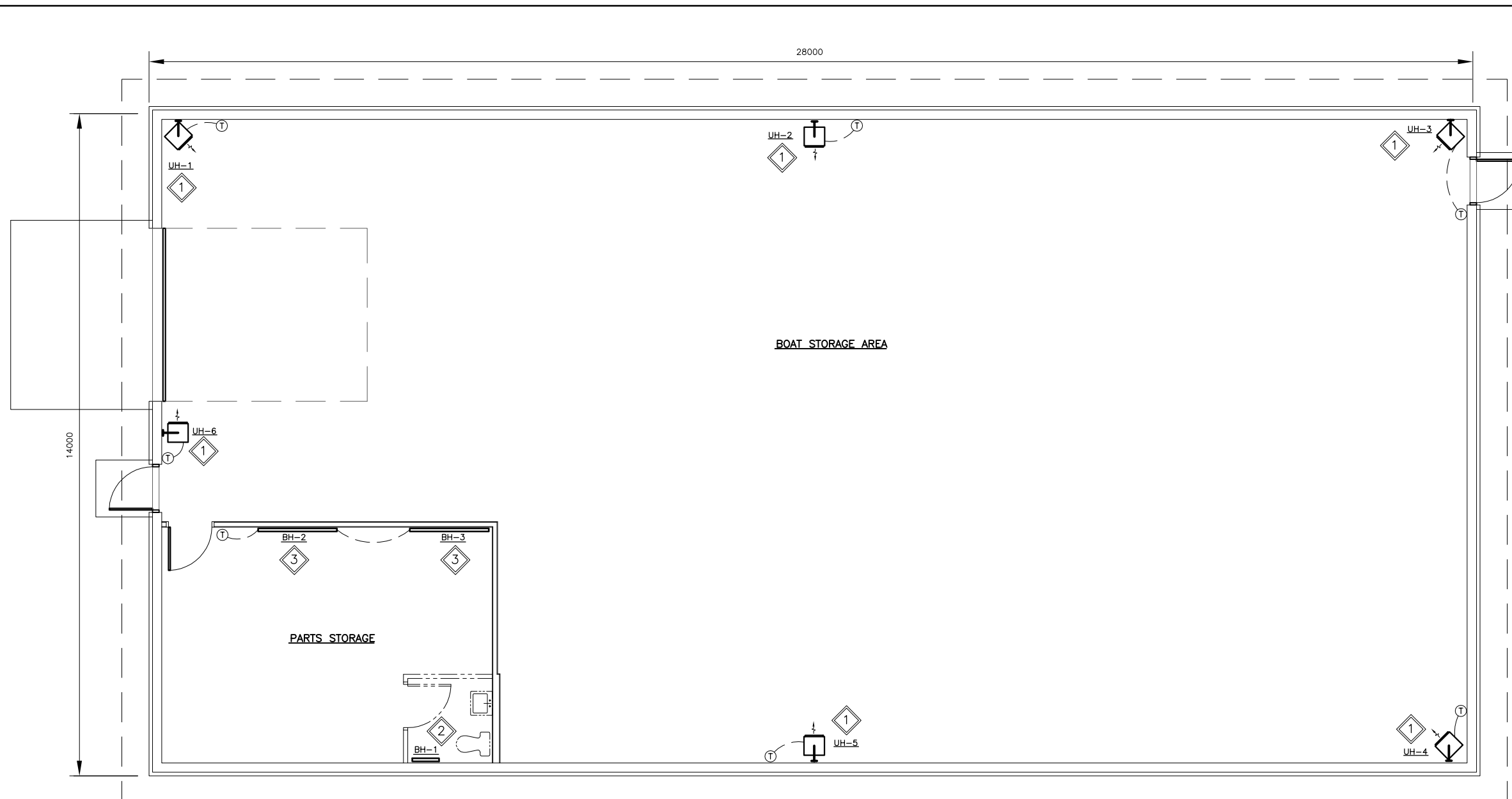
1. CONFORM TO NATIONAL BUILDING CODE OF CANADA AND ALL OTHER APPLICABLE CODES.
2. EQUIPMENT LOCATIONS SHOWN ARE APPROXIMATE. CONFIRM ACTUAL LOCATIONS IN FIELD.

KEY NOTES:

1. INSTALL NEW ELECTRIC UNIT HEATERS AS SHOWN. PROVIDE CONTROL WIRING BETWEEN THERMOSTAT AND UNIT HEATER. WIRING TO RUN IN CONDUIT.
2. INSTALL NEW BASEBOARD HEATER BH-1 AS SHOWN.
3. INSTALL NEW BASEBOARD HEATERS BH-2 AND BH-3 AS SHOWN. PROVIDE SPACE MOUNTED THERMOSTAT AND CONTROL WIRING BETWEEN BASEBOARD HEATERS AND THERMOSTAT.

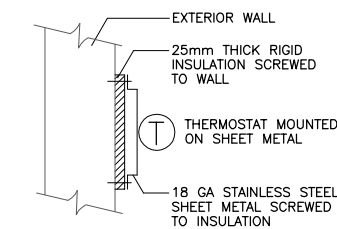
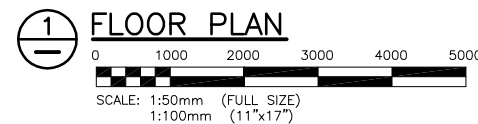
LEGEND:

- ELECTRICAL/CONTROL WIRING
- ⊙ THERMOSTAT



UNIT HEATER SCHEDULE

TAG	DESCRIPTION	CAPACITY (kW)	VOLTAGE	MAKE/MODEL
UH-1	ELECTRIC UNIT HEATER	10	240/1/60	"CALORITECH"/GE102 C/W ET5-S REMOTE THERMOSTAT AND WALL MOUNTING BRACKET
UH-2	ELECTRIC UNIT HEATER	7.5	240/1/60	"CALORITECH"/GE072 C/W ET5-S REMOTE THERMOSTAT AND WALL MOUNTING BRACKET
UH-3	ELECTRIC UNIT HEATER	10	240/1/60	"CALORITECH"/GE102 C/W ET5-S REMOTE THERMOSTAT AND WALL MOUNTING BRACKET
UH-4	ELECTRIC UNIT HEATER	10	240/1/60	"CALORITECH"/GE102 C/W ET5-S REMOTE THERMOSTAT AND WALL MOUNTING BRACKET
UH-5	ELECTRIC UNIT HEATER	7.5	240/1/60	"CALORITECH"/GE072 C/W ET5-S REMOTE THERMOSTAT AND WALL MOUNTING BRACKET
UH-6	ELECTRIC UNIT HEATER	5	240/1/60	"CALORITECH"/GE052 C/W ET5-S REMOTE THERMOSTAT AND WALL MOUNTING BRACKET



2 THERMOSTAT - EXTERIOR WALL MOUNTING DETAIL

SCALE: N.T.S.

ELECTRIC BASEBOARD HEATER SCHEDULE

TAG	DESCRIPTION	CAPACITY (kW)	VOLTAGE	MAKE/MODEL
BH-1	BASEBOARD HEATER	0.3	120/1/60	"OUELLET"/OFM 0302 C/W BUILT IN THERMOSTAT
BH-2	BASEBOARD HEATER	1.5	120/1/60	"OUELLET"/OFM 1502 C/W CONTACTS FOR REMOTE THERMOSTAT
BH-3	BASEBOARD HEATER	1.5	120/1/60	"OUELLET"/OFM 1502 C/W CONTACTS FOR REMOTE THERMOSTAT

KGS FILE NO.: P:\PROJECTS\2006\06-0107-17\MECH\DWGS\06-0107-17M003.dwg PLOT SCALE: 1:1



B.M. ELEV.		KGS GROUP		CONSULTING ENGINEERS & PROJECT MANAGERS	
		WINNIPEG (204) 896-1209		THUNDER BAY (807) 345-2233	
DESIGNED BY	PSS	CHECKED BY	RBB		
DRAWN BY	VJH	APPROVED BY			
HOR. SCALE	VERTICAL	RELEASED FOR CONSTRUCTION			
1 ISSUED FOR ADDENDUM 1	DEC.1/06	PSS			
0 ISSUED FOR TENDER	NOV.16/06	PSS			
NO. REVISIONS	DATE	BY	DATE	NOV. 2006	

PROVINCE OF MANITOBA
P.S. SILVA
Member
21131
REGISTERED PROFESSIONAL ENGINEER

CONSULTANT DRAWING NO.
06-0107-17M3

THE CITY OF WINNIPEG
PLANNING PROPERTY AND DEVELOPMENT
Winnipeg SERVICES DEPARTMENT

RIVER PATROL BOAT STORAGE BUILDING
HEATING SYSTEM OPTION 2
UNIT HEATERS

SHEET **3** OF **8**
CAD FILE DRAWING NUMBER
06-107-17M003.dwg
PROJECT NUMBER
2005-081