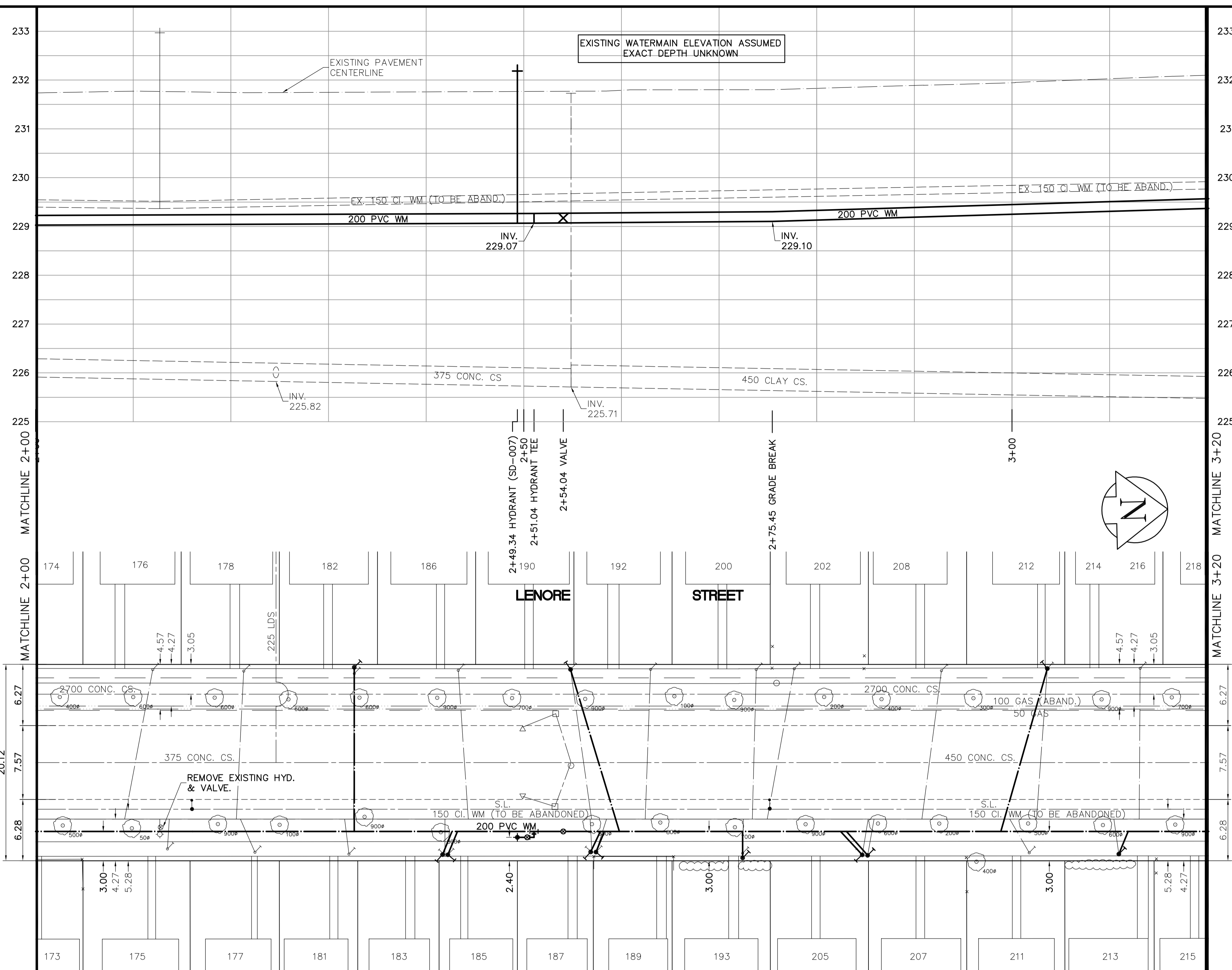


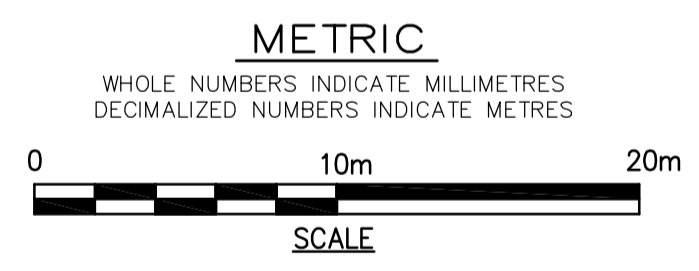
SHEET: COW-WM-A1 (11/2002)
 FILE NAME: L:\work\9994\9994-026-CAD\UID\ADDENDUM_1\9994-026.dwg
 LAYOUT NAME: layout1
 PLOTTED BY: greg.korman
 Jan 08, 2007 - 5:24am



- CONSTRUCTION NOTES**
1. EXPOSE WATERMAIN CONNECTIONS AND CONFIRM INVERTS PRIOR TO CONSTRUCTION.
 2. INSTALL WATERMAIN BY TRENCHLESS METHODS.
 3. ALL MATERIALS SHALL CONFORM TO THE CITY OF WINNIPEG STANDARD CONSTRUCTION SPECIFICATIONS.
 4. MINIMUM COVER TO TOP OF PROPOSED WATERMAIN SHALL BE 2.5m FROM STREET CENTERLINE.
 5. INSTALL ALL HYDRANTS WITH FLANGE ELEVATION 50mm - 150mm ABOVE FINISHED GRADE.
 6. REPLACE ALL EXISTING LEAD SERVICES FROM THE PROPOSED WATERMAIN TO PROPERTY LINE.
 7. NOTIFY ALL AFFECTED RESIDENTS AND BUSINESSES 24 HOURS IN ADVANCE OF ANY WATER SHUTDOWN OR DISRUPTION OF SERVICE.
 8. LOCATION OF WATER SERVICES SHOWN ON DRAWINGS ARE APPROXIMATE. THE CONTRACTOR SHALL FIELD LOCATE ALL WATER SERVICES PRIOR TO CONSTRUCTION.
 9. ALL VALVES SHALL BE RED TOP (COUNTER CLOCKWISE TO CLOSE).
 10. BACKFILL UNDER OR WITHIN 1.0m OF PAVEMENTS, INCLUDING SIDEWALKS SHALL BE CLASS 3 BACKFILL EXCEPT AS NOTED. BACKFILL IN BOULEVARDS SHALL BE CLASS 5 BACKFILL.

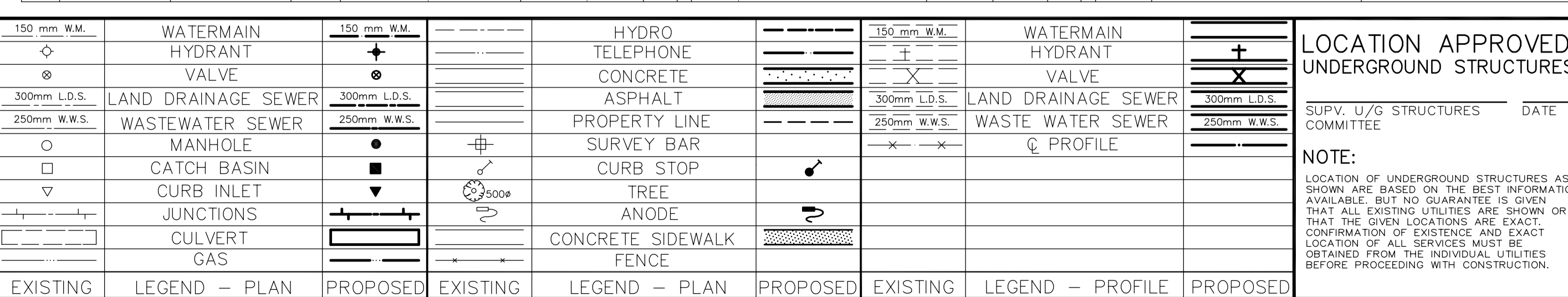
SEE DRAWING D-9171 FOR CONTINUATION 20.12

SEE DRAWING D-9173 FOR CONTINUATION 20.12



ADDRESS	NATURE OF SERVICE	SIZE	MATERIAL	DISTANCE SC TO PROPERTY	POSITION OF SC (curb stop)	POSITION OF CC (corp)	COMMENTS:
190 LENORE ST	RESIDENTIAL	19 mm	COPPER	0.3 m	Long 70.7 m S of SL Short 0.3 m N of NL	Long 2.1 m N of SC Short 2.1 m N of SC	PROP REN FR 0.5L TO 34CU JAN 4/90
189 LENORE ST	RESIDENTIAL	19 mm	COPPER		Long of SNL Short 1.2 m S of SNL	Long of SC Short 0.3 m N of SC	RENEW TO PROPERTY
187 LENORE ST	RESIDENTIAL	19 mm	COPPER		Long of SNL Short 0.4 m N of SNL	Long of SC Short 0.4 m N of SC	RENEW TO PROPERTY
186 LENORE ST	RESIDENTIAL	19 mm	COPPER	0.5 m	Long 143.3 m N of NL Short 0.9 m S of NL	Long 1.1 m N of SC Short 1.1 m N of SC	RENEW TO PROPERTY
185 LENORE ST	RESIDENTIAL	19 mm	COPPER	3.8 m	Long 29.9 m N of 3RD Short 0.9 m S of 3RD	Long 0.9 m N of SC 183 Short 0.9 m N of SC 183	RENEW TO PROPERTY
183 LENORE ST	RESIDENTIAL	19 mm	COPPER	0.5 m	Long 29.6 m N of 3RD Short 1.5 m N of 3RD	Long 0.9 m N of SC 183 Short 0.9 m N of SC 183	RENEW TO PROPERTY
182 LENORE ST	RESIDENTIAL	19 mm	LEAD	0.3 m	Long 93.0 m S of SL Short 0.3 m S of SL	Long of SC Short of SC	RENEW TO PROPERTY
181 LENORE ST	RESIDENTIAL	19 mm	COPPER	0.5 m	Long 93.9 m S of SL Short 0.3 m S of SL	Long of SC Short of SC	RENEW TO PROPERTY
178 LENORE ST	RESIDENTIAL	19 mm	COPPER		Long of SNL Short 2.7 m S of SNL	Long of SC Short of SC	FEB103-RENEWED SERVICE BOX FEB 03 THAWED DBHLL AUG02-COUPPLNG 4" FROM CORP
177 LENORE ST	RESIDENTIAL	19 mm	COPPER	6.4 m	Long 1.5 m S of SNL Short 1.5 m S of SNL	Long of SC Short of SC	34" COPPER CPLG 36" FROM S/C TOWARDS WATERMAIN
176 LENORE ST	RESIDENTIAL	19 mm	COPPER	0.3 m	Long 4.9 m N of SNL Short 4.9 m N of SNL	Long of SC Short of SC	
175 LENORE ST	RESIDENTIAL	19 mm	COPPER	0.3 m	Long 114.0 m N of NL Short 1.2 m S of NL	Long 0.6 m S of SC Short 0.3 m S of SC	

ADDRESS	NATURE OF SERVICE	SIZE	MATERIAL	DISTANCE SC TO PROPERTY	POSITION OF SC (curb stop)	POSITION OF CC (corp)	COMMENTS:
216 LENORE ST	RESIDENTIAL	19 mm	COPPER	0.5 m	Long 12.5 m S of SL Short 1.5 m S of SL	Long of SC Short of SC	
213 LENORE ST	RESIDENTIAL	19 mm	COPPER	0.5 m	Long 14.8 m S of SL Short 2.7 m S of SL	Long of SC Short of SC	RENEW TO PROPERTY
212 LENORE ST	RESIDENTIAL	19 mm	COPPER	0.5 m	Long 22.1 m S of SL Short 1.4 m S of SL	Long of SC Short of SC	
211 LENORE ST	RESIDENTIAL	19 mm	COPPER	0.5 m	Long 24.4 m S of SL Short 2.6 m S of SL	Long of SC Short of SC	RENEW TO PROPERTY
208 LENORE ST	RESIDENTIAL	19 mm	COPPER	0.6 m	Long 32.9 m S of SL Short 0.6 m S of SL	Long of SC Short of SC	
207 LENORE ST	RESIDENTIAL	19 mm	COPPER	0.3 m	Long 41.1 m S of SL Short 0.8 m S of SL	Long of SC Short of SC	RENEW TO PROPERTY
205 LENORE ST	RESIDENTIAL	19 mm	COPPER	0.3 m	Long 40.5 m S of SL Short 1.2 m S of SL	Long of SC Short of SC	RENEW TO PROPERTY
202 LENORE ST	RESIDENTIAL	19 mm	COPPER	0.8 m	Long 0.9 m S of SL Short 0.9 m S of SL	Long of SC Short of SC	FORMER DOUBLE W/ 200
200 LENORE ST	RESIDENTIAL	19 mm	COPPER	0.5 m	Long 52.1 m S of SL Short 0.9 m S of SL	Long of SC Short of SC	TAPPED ON OPP SIDE
193 LENORE ST	RESIDENTIAL	13 mm	LEAD	0.3 m	Long 83.0 m S of SL Short 1.8 m S of SL	Long of SC Short of SC	3/4" COPPER CPLG 1" W OF SC
192 LENORE ST	RESIDENTIAL	19 mm	COPPER	0.5 m	Long 83.1 m S of SL Short 1.4 m S of SL	Long of SC Short of SC	RENEW TO PROPERTY



LOCATION APPROVED UNDERGROUND STRUCTURES

SUPV. U/G STRUCTURES DATE COMMITTEE

NOTE:
 LOCATION OF UNDERGROUND STRUCTURES AS SHOWN ARE BASED ON THE BEST INFORMATION AVAILABLE. BUT NO GUARANTEE IS GIVEN THAT ALL EXISTING UTILITIES ARE SHOWN OR THAT THE GIVEN LOCATIONS ARE EXACT. CONFIRMATION OF EXISTENCE AND EXACT LOCATION OF ALL SERVICES MUST BE OBTAINED FROM THE INDIVIDUAL UTILITIES BEFORE PROCEEDING WITH CONSTRUCTION.

B.M. 37-059 S.E. Cor. Westminster Ave. & Lipton St., Tbt. in W. Loyal stone foundation of No. 161 Lipton St., 0.5m S. & 0.3m A.G.L. of N.W. Cor. of Bldg.

EARTH TECH
 A tyco INTERNATIONAL LTD. COMPANY
 Earth Tech (Canada) Inc. Winnipeg, Manitoba 204-477-5381

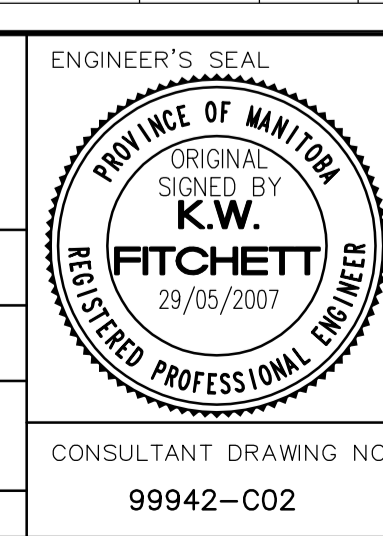
DESIGNED BY: GSK, GDL	CHECKED BY: GSK
DRAWN BY: GDL	APPROVED BY: GSK

1 ADDENDUM 1 2007/06/07 GSK
 B ISSUED FOR TENDER 2007/05/31 GSK
 A ISSUED FOR REVIEW 2006/05/26 GSK

HOR. SCALE: 1:250
 VERTICAL SCALE: 1:50

RELEASED FOR CONSTRUCTION BY: K. ZUREK

DATE 2007/04/11 DATE 2007/05/31



THE CITY OF WINNIPEG
 Winnipeg WATER AND WASTE DEPARTMENT

2007 WATERMAIN RENEWALS CONTRACT 6

LENORE STREET
 WESTMINSTER AVENUE TO PORTAGE AVENUE
 STA. 2+00 TO STA. 3+20

SHEET OF 2 8
 CITY DRAWING NUMBER D-9172

CONSULTANT DRAWING NO. 99942-C02