

1 TRENCH DRAIN SECTION

S-2.1

3/4" = 1'-0"

6"x4"x3/8" LLV. CONT. ALL AROUND PIT C/W - 3/8"φ DBA'S X 6" LG.

1/2" CHECKERED F.E. COVER GALVANIZED PLUS 3/8" PAN HEAD SCREWS @ 12" O/C

1/2" X 3" BARS @ 1 1/2" O/C & ENDS BARS PLUS 1/2"φ TIE BARS @ 6" O/C GALVANIZED

3 1/2" x 3 1/2" x 1/2" L CONT. (GALVANIZED) C/W 3/8"φ NELSON STUDS @ 12" O/C

6" COMPACTED GRANULAR FILL

8" CONC. SUMP PIT WALLS R/W 2-25M TOP & BOTTOM, 15M VERTICALS @ 12" O/C & 15M HORIZ. @ 12" O/C - ALTERNATING

6" DEEP LIFTS OF COMPACTED GRANULAR

W8x18 C/W 4x1/2"x10" BRG. PL'S EACH END (2)-5/8"φ X 6" LG. N.S. (GALVANIZED)

L6" x 6" x 3/8" @ 10" O/C

SEE ARCH

5'-0" MAX.

5'-0" MAX.

12" CONC. PIT SLAB R/W 15M @ 12" EACH WAY TOP & BOTTOM

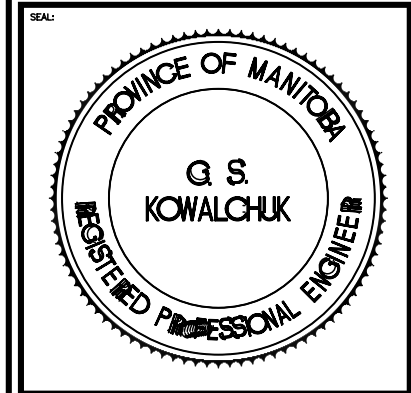
15M DOWELS @ 12" O/C TYPICAL

2 SUMP SECTION

S-2.1

3/4" = 1'-0"

1	ADDENDUM #2	JUN 11, 2007	CML
0	ISSUED FOR TENDER	MAY 11, 2007	CML
REV	DESCRIPTION	DATE	BY



THIS DRAWING MUST NOT BE SCALED.
THE GENERAL CONTRACTOR SHALL VERIFY ALL DIMENSIONS, DATUMS AND LEVELS PRIOR TO COMMENCEMENT OF WORK AND IS HELD RESPONSIBLE FOR REPORTING ANY DISCREPANCY OR OMISSION TO NEIL COOPER ARCHITECT INC IMMEDIATELY.
THIS DRAWING IS THE EXCLUSIVE PROPERTY OF NEIL COOPER ARCHITECT INC AND CAN BE REPRODUCED ONLY WITH THE PERMISSION OF NEIL COOPER ARCHITECT INC, IN WHICH CASE THE REPRODUCTION MUST BEAR THEIR NAME AS THE ARCHITECTURAL FIRM.

DRAWING: SECTIONS & DETAILS
PROJECT: 195 TECUMSEH O/H DOOR & CONCRETE SLAB REPLACEMENT WINNIPEG, MANITOBA

Neil Cooper Architect Inc.
10-395 Berry Street, Winnipeg, Manitoba R3J 1N6

Kowalchuk
Consulting Engineers Ltd.

100 - 79 Arden Road
Winnipeg, MB R2H 1S7
Phone: (204) 266-7888
Fax: (204) 266-7889
E-mail: info@kco.com

DRAWN BY: DC CHECKED BY: GSK SHEET NO: S2.1 R1 REV NO:
DATE: MAY. 09, 2007
SCALE: 3/4" = 1'-0"
FILE: Projects\2007\07065\07065-S1.dwg