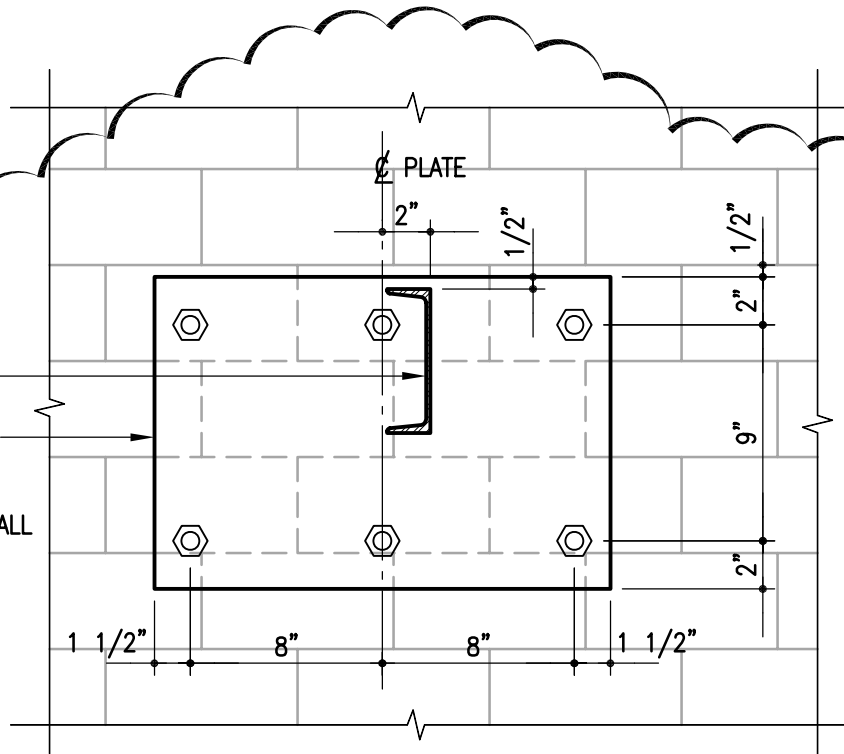


WELD ALL AROUND CHANNEL

19"x12"x3/4" CONNECTION PLATE
 6-3/4"φ x 10" MIN EMBED S.S.
 HAS-E ROD HILTI HY20 ANCHORS
 INTO CLAY BRICK/CONC BLOCK WALL



G CONNECTION PLATE DETAIL CP1

S-1 1 1/2" = 1'-0"



**CROSIER
 KILGOUR &
 PARTNERS
 LTD.** 00-000
 Consulting Structural Engineers

300-275 Carlton Street, Winnipeg, MB R3C 5R6
 Tel: (204) 943-7501 Fax: (204) 943-7507



Project		2 CARRIERE AVENUE	
		WINNIPEG, MANITOBA	BID OPPORTUNITY 427-2007
Sheet Title			Sheet No.
REVISED CONNECTION PLATE DETAIL CP1			RS-1
Design	Drawn By	Date	File
KJP	TW	JUNE 7, 2007	2006-0988