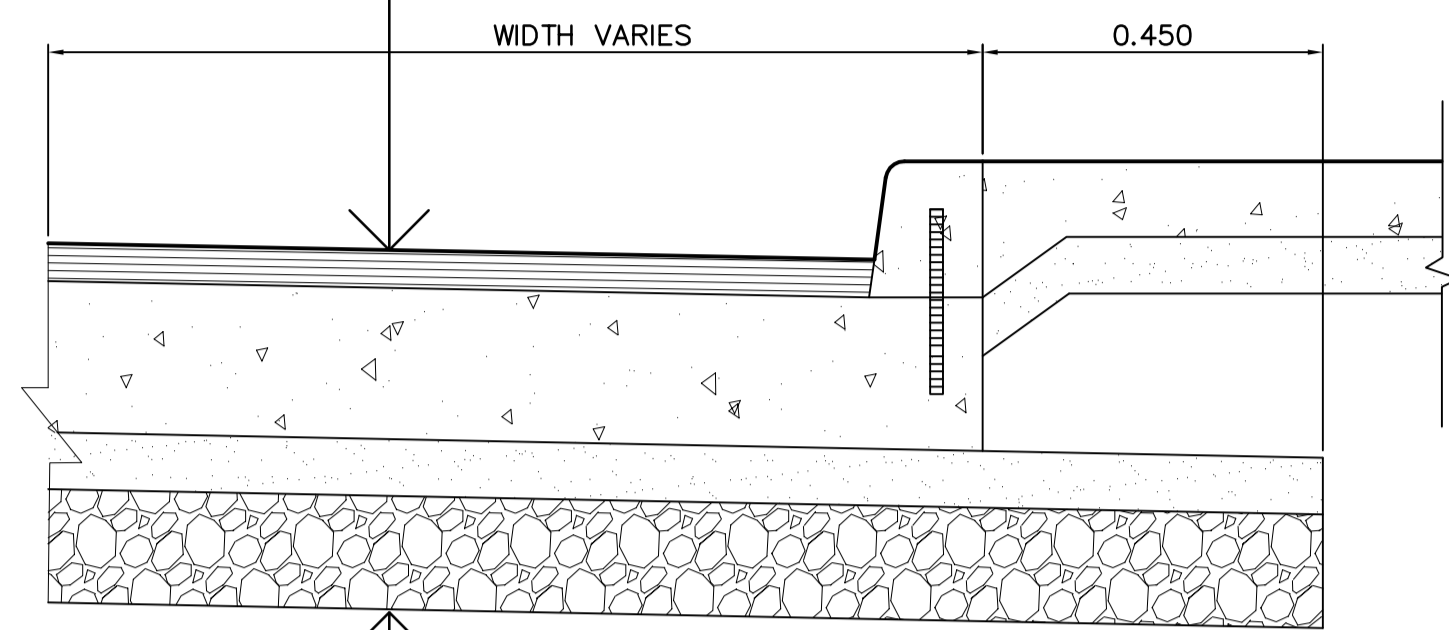
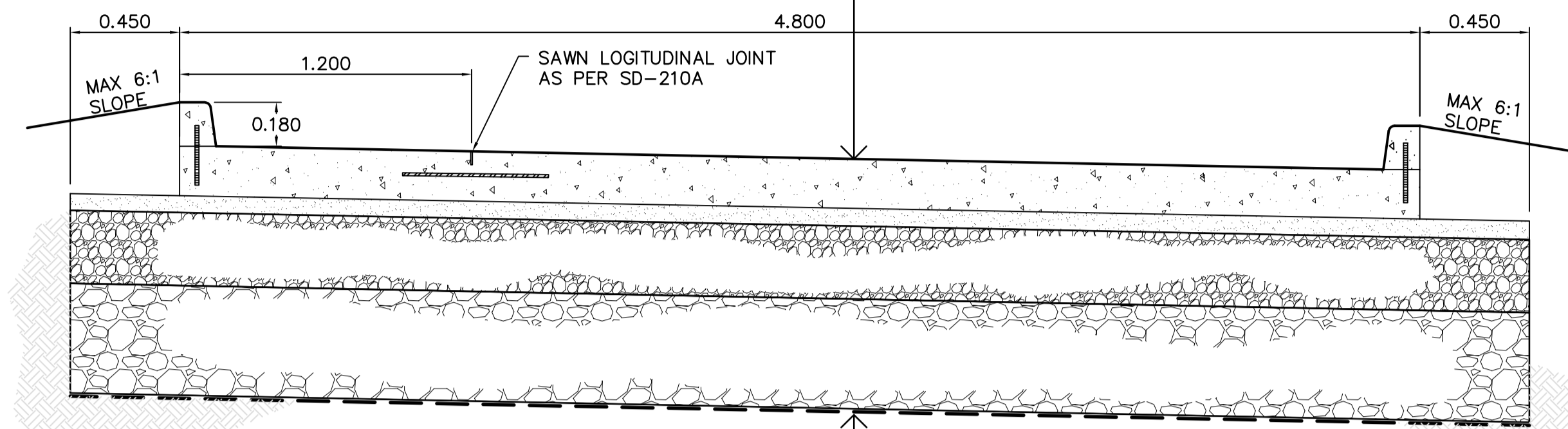


TYPICAL PAVEMENT SECTION  
 50mm ASPHALT OVERLAY  
 200mm CONCRETE  
 75mm BASE COURSE  
 150mm LIMESTONE 50mm SUB BASE COURSE



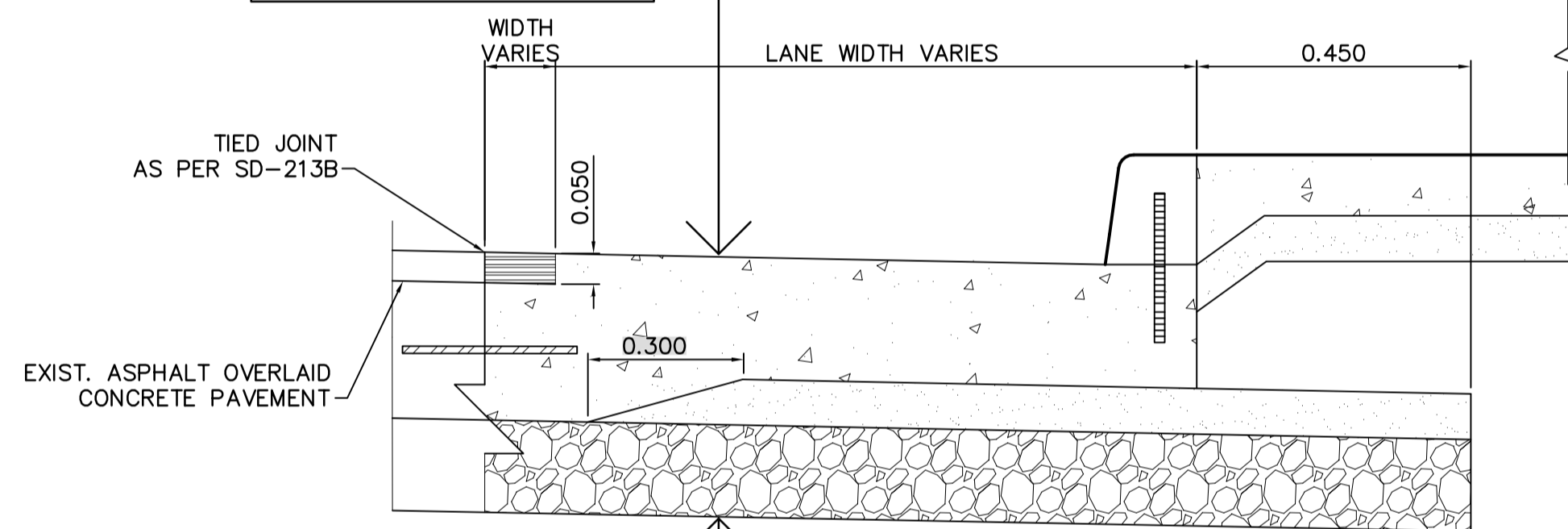
SECTION 1  
 SCALE 1:10

TYPICAL PAVEMENT SECTION  
 230mm TINTED OR UNTINTED CONCRETE  
 75mm LIMESTONE BASE COURSE  
 200mm LIMESTONE 50mm SUB BASE COURSE  
 450mm LIMESTONE 150mm SUB BASE COURSE  
 SEPARATION/REINFORCEMENT GEOTEXTILE FABRIC



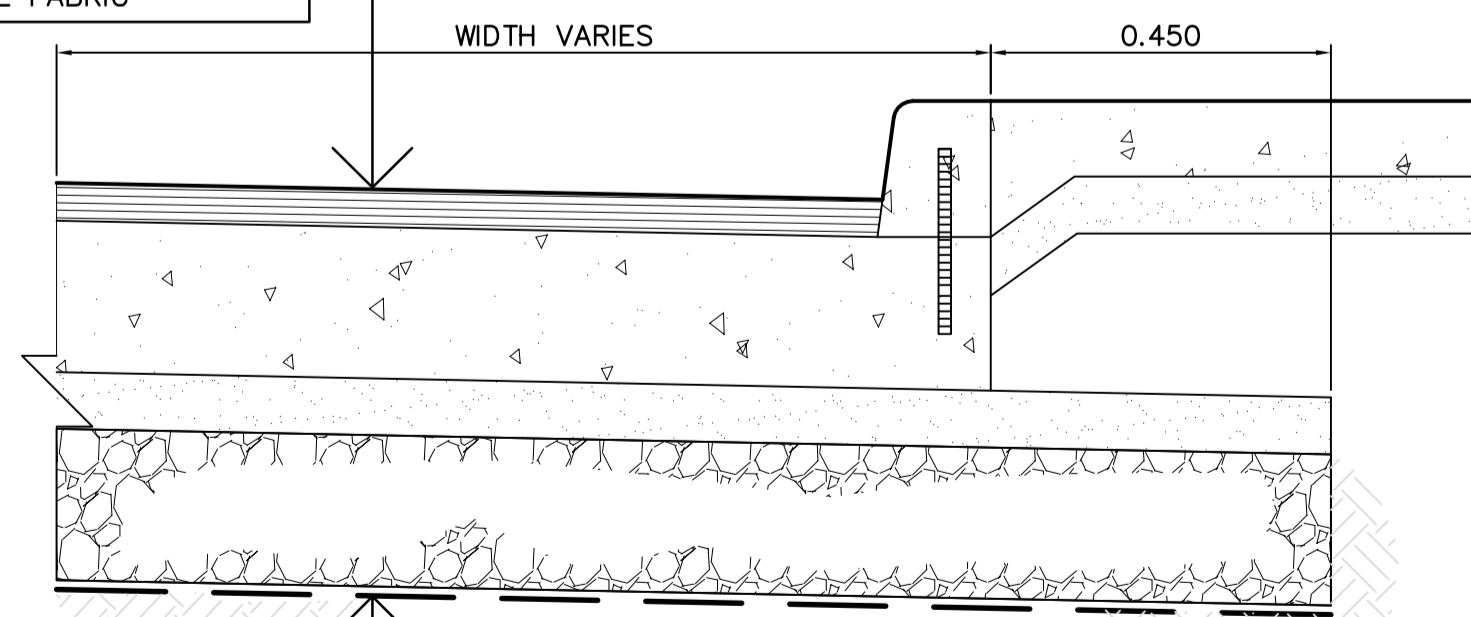
SECTION 2  
 SCALE 1:20

TYPICAL PAVEMENT SECTION  
 200mm TINTED CONCRETE  
 75mm BASE COURSE  
 150mm SUB BASE COURSE

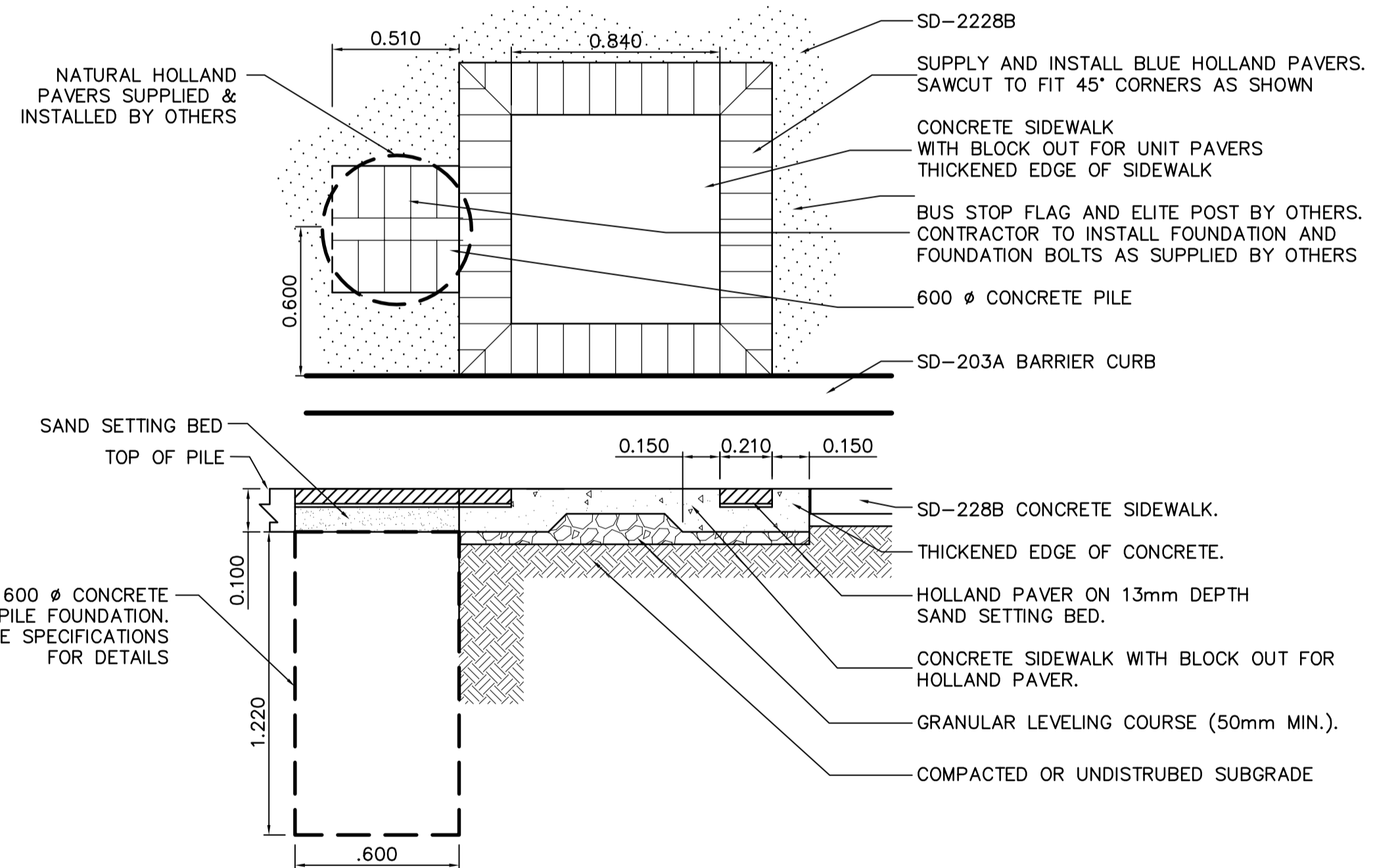


SECTION 3  
 SCALE 1:10

TYPICAL PAVEMENT SECTION  
 50mm ASPHALT OVERLAY  
 200mm CONCRETE  
 75mm BASE COURSE  
 225mm LIMESTONE 50mm SUB BASE COURSE  
 SEPARATION/REINFORCEMENT GEOTEXTILE FABRIC



SECTION 6  
 SCALE 1:10



CONCRETE SIDEWALK WITH UNIT PAVER INSERT & BUS STOP FLAG - AT EXISTING SIDEWALK  
 SCALE 1:20

UNDERGROUND STRUCTURES  SUPV. U/G STRUCTURES COMMITTEE      DATE  NOTE: LOCATION OF UNDERGROUND STRUCTURES AS SHOWN ARE BASED ON THE BEST INFORMATION AVAILABLE. BUT NO GUARANTEE IS GIVEN THAT ALL EXISTING UTILITIES ARE SHOWN OR THAT THE GIVEN LOCATIONS ARE EXACT. CONFIRMATION OF EXISTENCE AND EXACT LOCATION OF ALL SERVICES MUST BE OBTAINED FROM THE INDIVIDUAL UTILITIES BEFORE PROCEEDING WITH CONSTRUCTION.	B.M. ELEV.	DESIGNED BY D.B.W.		ENGINEER'S SEAL PROVINCE OF MANITOBA ORIGINAL D.B. WIEBE 07/31/07 Member 22480 REGISTERED PROFESSIONAL ENGINEER	THE CITY OF WINNIPEG TRANSIT DEPARTMENT
		DRAWN BY P.M.W./A.J.P.			
		CHECKED BY D.B.W.	RELEASED FOR CONSTRUCTION DATE	CONSULTANT PROJECT NO. 07-7840	STANDARD DETAILS CROSS SECTIONS
		APPROVED BY			
	5    ADDENDUM # 1    08-07-07 D.B.W.				
	4    ISSUED FOR TENDER    07-31-07 D.B.W.				
	2    ISSUED FOR REVIEW    06-28-07 D.B.W.				
	NO. REVISIONS      DATE      BY      DATE				