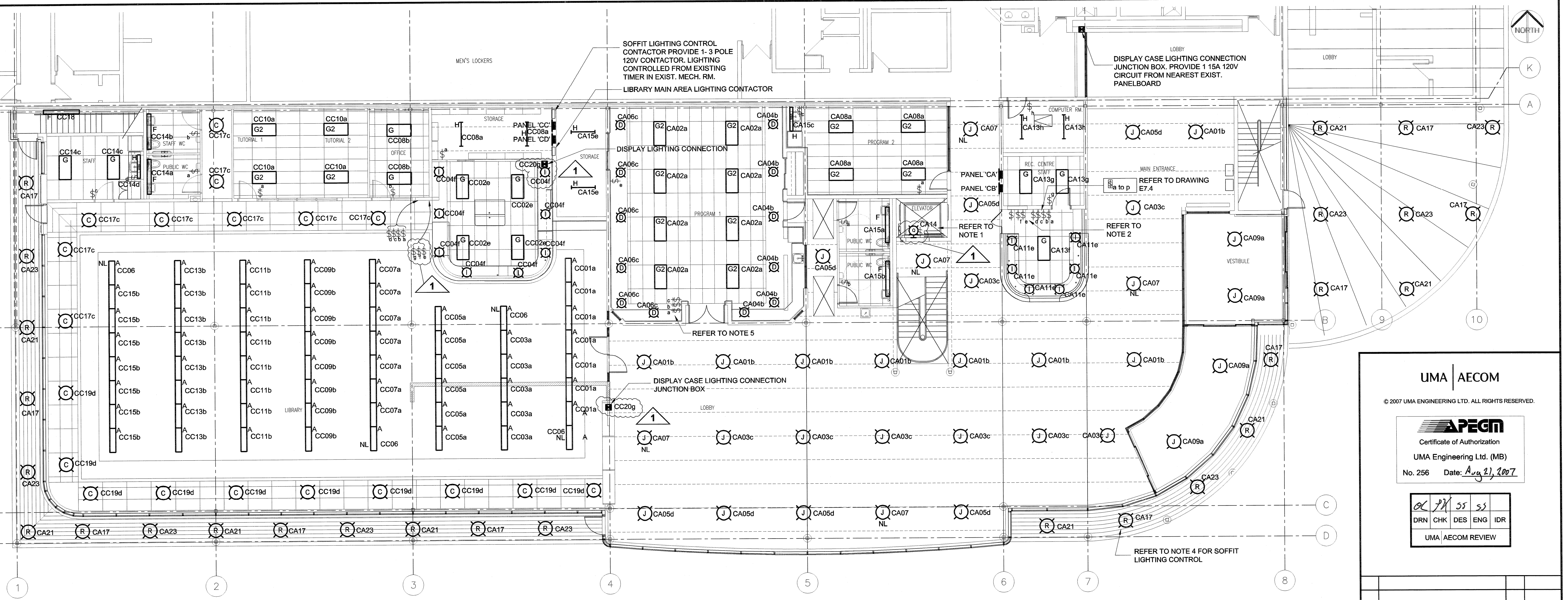
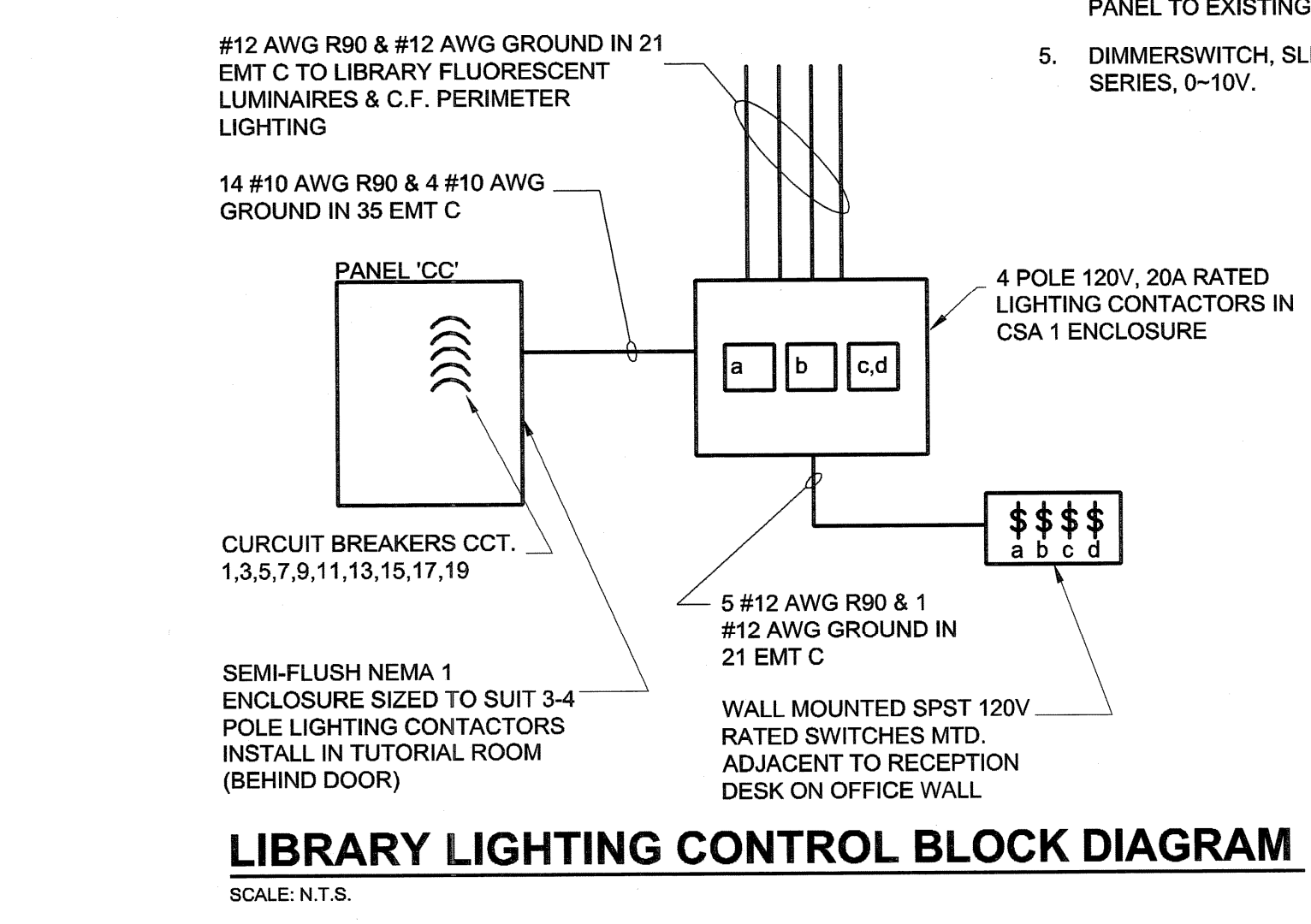
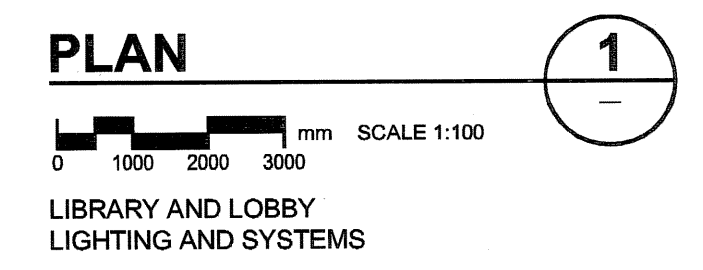


FILE NAME: F959-001-01\_01-E-2001\_RX.dwg  
 DATE: 2007.02.21  
 DESCRIPTION: Second Floor Demolition  
 PROJECT No: F959-001-01  
 ADDRESS: 999 Sargent St. Winnipeg, Manitoba  
 PLOT: 07/08/22 2:38:59 PM



LUMINAIRE SCHEDULE					
TYPE	MANUFACTURER	CAT. No.	LAMP	VOLTAGE	REMARKS
A	LINEAR LIGHTING CORPORATION	R110P1-B-2-ET5-MBL	2 - 28W T5	120V	FLUORESCENT PENDANT MTD. BIDIRECTIONAL LUMINAIRE
B	---	---	---	---	---
C	LIGHTOLIER	9X9CCDW/9X922632427 HG120	32W TRIPLE T	120V	RECESSED DOWNLIGHT
D	LIGHTOLIER	CALCULITE 8031MG-612632BG120BCU LUTRON 0-10V, 10% DIMMABLE BALLAST	26W TT CFL	120V	RECESSED DOWNLIGHT BLACK BAFFLE C/W TRIM KIT
E	CFI FLUORESCENT	TX248-120SO	2 - 32W T8	120V	SURFACE MTD. 4ft. FLUORESCENT LUMINAIRE WITH WRAP AROUND LENS
F	LINEAR LIGHTING CORP.	C38P-B-2-ET8-120-PRT-WMT-BW-6	4 - 25W T8	120V	PERFORATED STEEL SIDE (RECTANGLES) BIDIRECTIONAL WALL MOUNTED WHITE 6ft LONG
G	FOCAL POINT	FEQ-24-B2-T5HO-E120 -AL-WH	2 - 25W T5 HIGH OUTPUT	120V	LAY IN TILE FLUORESCENT LUMINAIRE WITH DIFFUSED ILLUMINATION
G2	FOCAL POINT	FEQ-24-B2-T5HO-E120 -AL-WH LUTRON 0-10V, 10% DIMMABLE BALLAST	2 - 25W T5 HIGH OUTPUT	120V	LAY IN TILE FLUORESCENT LUMINAIRE WITH DIFFUSED ILLUMINATION LUTRON 10% DIMMABLE BALLAST 0 - 10 VOLTS
H	CFI FLUORESCENT	SV4S228UNVPG	2 - 28W T5	120V	STRIP FLUORESCENT
I	LIGHTOLIER	373FGCMX/302MRX	50MR16 /38/FL	120V	RECESSED DOWNLIGHT C/W DROP GLASS REFRACTOR
J	GUTH LIGHTING	ELP-E1-31270T	2 - 70W QUAD C.F.	120V	PENDANT MOUNT 16" DIA. ENCLOSED LUMINAIRE C/W PRISMATIC ACRYLIC REFLECTOR
K	FOCAL POINT	FS1-PS-2T8-1C-120-E -SG-WH-4	2 - 32W T8	120V	SURFACE MOUNT 4' FLUORESCENT LUMINAIRE
L	GUTH LIGHTING	S1205-4NI-3-120-HD	3 75W CFL	120V	PENDANT MOUNT 25" DIA. OPEN LUMINAIRE C/W PRISMATIC ACRYLIC REFLECTOR
M	LITHONIA LIGHTING	125 40S R3 FG	1 400W HPS	347V	COBRA HEAD MTD. ON 7.6m (25') DOUBLE DAVIT STEEL POLE
N	LITHONIA LIGHTING	KAD 400S R3 347 SPD4 CSA CPI	1 - 400W HPS	347V	MTD ON 7.6m (25') BLACK SQUARE STRAIGHT STEEL POLE
P	---	---	---	---	---
Q	LEVITON	49875 C/W WIREGUARD	26W C.F. SELF BALLASTED	120V	SURFACE MTD.
R	LIGHTOLIER	DL7VCLP-DL7V70SA	1 - 70W HPS	120V	ENCLOSED REFLECTOR LAMP FLUSH MTD. EXTERIOR SOFFIT



- NOTES
- REFER TO ELEVATOR SHOP DRAWINGS FOR EXACT LOCATION OF CONVENIENCE RECEPT., MAINTENANCE LIGHTING AND MAIN DISCONNECT SWITCH.
  - 2ND FLOOR GYMNASIUM LIGHT SWITCH. REFER TO DWG. E2.2
  - REFER TO LIFE SAFETY AND SYSTEM DRAWING FOR NEW LOW VOLTAGE LIGHTING CONTROL SWITCHES LOCATED IN EXISTING BUILDING.
  - SOFFIT LIGHTING TO BE CONTROLLED BY EXISTING TIME CLOCK IN MECHANICAL ROOM. PROVIDE 3 POLE 20A RATED CONTACTOR C/W ENCLOSURE IN STORAGE RM ADJACENT TO PANEL 'CA'. PROVIDE #12 AWG R90 IN 21C FROM CONTACTOR PANEL TO EXISTING TIME CLOCK CONTROLLER.
  - DIMMERSWITCH, SLIDE TO OFF. STANDARD OF ACCEPTANCE LUTRON NORA T SERIES, 0-10V.

ALL LUMINAIRES SHALL COME COMPLETE WITH SPECIFIED LAMPS AND BALLASTS. BALLASTS SHALL BE ELECTRONIC AND MANITOBA HYDRO POWER SMART ELIGIBLE.

UMA | AECOM  
 © 2007 UMA ENGINEERING LTD. ALL RIGHTS RESERVED.

**APECM**  
 Certificate of Authorization  
 UMA Engineering Ltd. (MB)  
 No. 256 Date: Aug 21, 2007

DRN	CHK	DES	ENG	IDR

UMA | AECOM REVIEW

NO.	REVISION/DESCRIPTION	BY	DATE
1	ISSUED FOR ADDENDUM #2	QL	07/08/21
0	ISSUED FOR TENDER	QL	07/07/23

SEALS

PROVINCE OF MANITOBA  
 S.K. [Signature]  
 SMART  
 Member  
 20996  
 Aug 21, 2007  
 REGISTERED PROFESSIONAL ENGINEER

DRAWN BY: [Signature] CHECKED BY: [Signature] APPROVED: [Signature]  
 DATE: 2007.02.21 USER APPROVAL

CITY OF WINNIPEG  
 PLANNING, PROPERTY & DEVELOPMENT DEPARTMENT  
 CIVIC ACCOMMODATIONS DIVISION  
 300 - 65 GARRY ST. R3C 4K4

PROJECT  
 Construction of Cindy Klassen  
 Recreation Complex Facility  
 Enhancement Project  
 999 Sargent St. Winnipeg, Manitoba

SHEET TITLE  
 Electrical  
 Main Floor - Library&Lobby Plan  
 Lighting and Systems

SCALE: 1:100 PROJECT NO. 2005-059 SHEET NO. E2.1  
 DRAWING SHEET SIZE: A1 (841mm x 594mm) PLOT 1:1