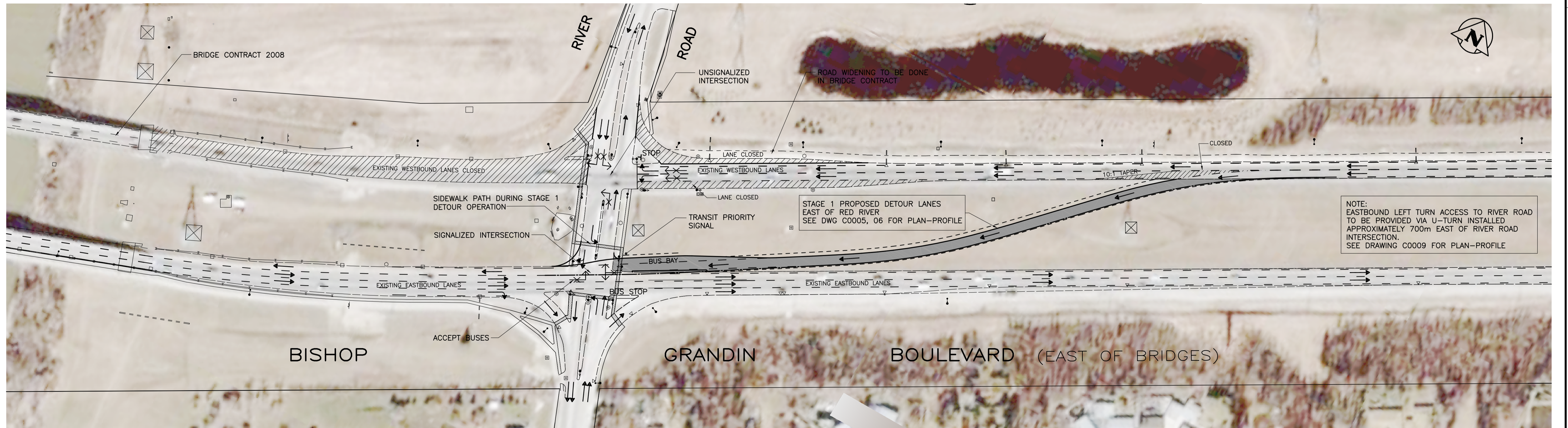
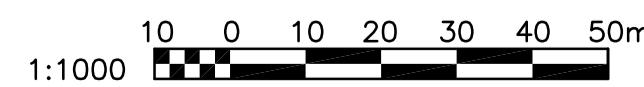


PRESENTATION OF PROPOSED STAGE 1 DETOUR OPERATION  
(SPRING 2008 – FALL 2008)  
WESTBOUND BRIDGE CLOSED



- LEGEND:**
- TRAFFIC MOVEMENT PROHIBITED
  - TRAFFIC MOVEMENT ALLOWED
  - NEW PAVEMENT FOR DETOUR ROADWAYS
  - EXISTING ROADWAYS AND SIDEWALKS CLOSED DURING CONSTRUCTION

AERIAL PHOTO BACKGROUND IS FOR PRESENTATION PURPOSES ONLY AND IS NOT FULLY ORTHORECTIFIED. DIRECTIONS, DISTANCES, AND/OR ALIGNMENTS SHOULD NOT BE PERFORMED OR INFERRED FROM THE PHOTOGRAPH.



**APEGM**  
Certificate of Authorization  
Wardrop Engineering Inc.  
No. 195 Expiry: April 30, 2008

B.M. ELEV.	F.B. 2153
DESIGNED BY	DAL
CHECKED BY	Uga
DRAWN BY	NL
APPROVED BY	
HOR. SCALE:	1 : 1000
VERTICAL:	
RELEASED FOR CONSTRUCTION	
ISSUED FOR TENDER	07.08.08 Uga
NO. REVISIONS	DATE

**WARDROP** Engineering Inc.

DESIGNED BY: DAL  
DRAWN BY: NL  
HOR. SCALE: 1 : 1000  
VERTICAL: [blank]  
RELEASED FOR CONSTRUCTION: [blank]  
DATE: 07.07.02

**PRELIMINARY DRAWING**

**NOT TO BE USED FOR CONSTRUCTION**

CONSULTANT DRAWING NO. 0600070700-DWG-C1001-00

**THE CITY OF WINNIPEG**  
PUBLIC WORKS DEPARTMENT  
ENGINEERING DIVISION

FORT GARRY BRIDGE REHABILITATION

STAGE 1 (2008 PROPOSED OPERATION)  
PROPOSED DETOUR LANES  
OVERALL PLAN SHOWING TRAFFIC MOVEMENTS

CITY DRAWING NUMBER  
SHEET 1 OF 9  
**C0001**