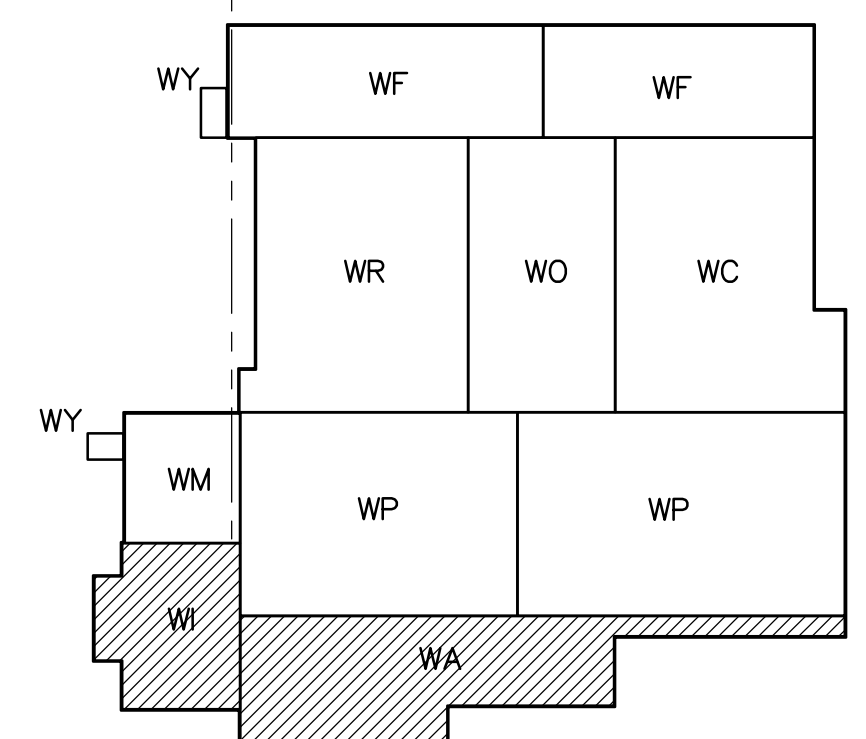
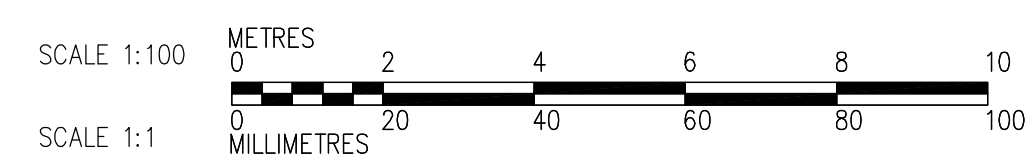
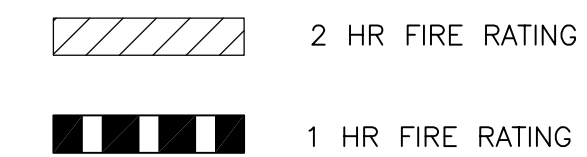


NOTE: CEILING HEIGHTS SHOWN ARE TO BE MEASURED FROM EACH ROOM'S RESPECTIVE FINISH FLOOR ELEVATIONS.

1 PARTIAL REFLECTED CEILING PLAN - ADMINISTRATION AREA (THIRD FLOOR)  
WB-B0153 1:100

FIRE RATINGS:



B.M. ELEV.			
DESIGNED BY	TWS	CHECKED BY	BJS
DRAWN BY	AL/LK	APPROVED BY	AHL
SCALE:	1:100	RELEASED FOR CONSTRUCTION BY:	R. SOROKOWSKI
NO.	REVISIONS	DATE	BY
01	95-2007 ADDENDUM 05	07/07/13	LK
00	ISSUED FOR TENDER	07/06/05	LK
DATE	2005/08/03	DATE	2007/06/05

**CH2MHILL**  
Frederickson Cooper ARCHITECTS

**EarthTech**  
A Tyco International Ltd. Company

ENGINEER'S SEAL  
ORIGINAL SIGNED BY  
NEIL COOPER  
2007/06/05

CONSULTANT DRAWING NO.  
WB-B0153

**THE CITY OF WINNIPEG**  
WATER AND WASTE DEPARTMENT  
ENGINEERING DIVISION

WATER TREATMENT PLANT  
MAIN BUILDING  
OFFICE AND PLANT INTERIOR FINISHES

ARCHITECTURAL  
PARTIAL REFLECTED CEILING PLAN OF  
ADMINISTRATION AREA

CITY FILE NUMBER  
SHEET OF  
CITY DRAWING NUMBER  
1-06018-A-B0153-001-01D