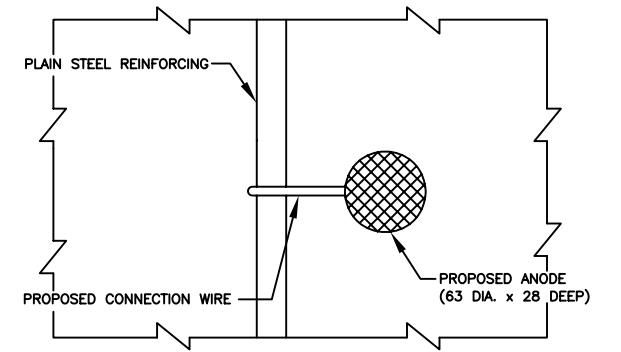
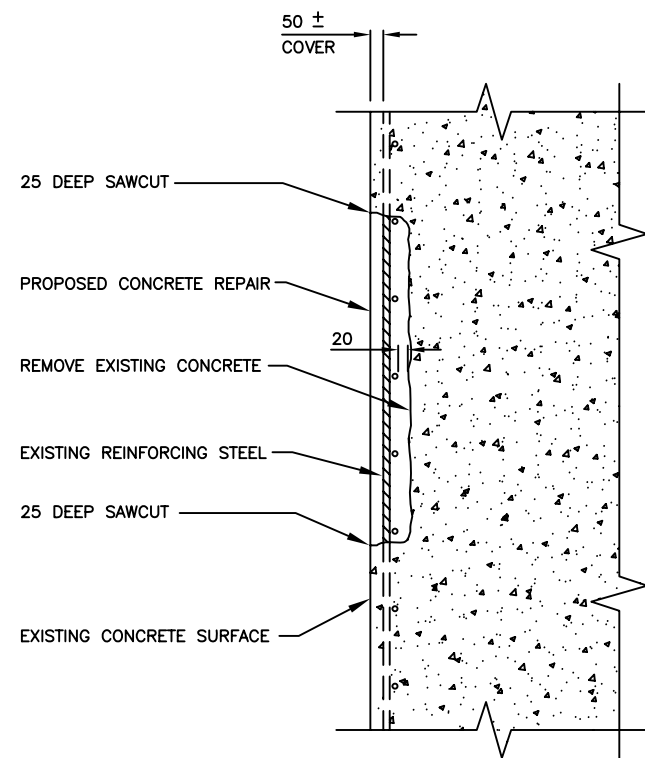


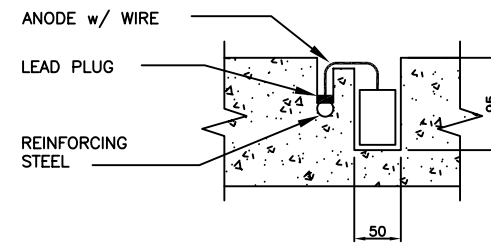
SECTION 1/12  
N.T.S.



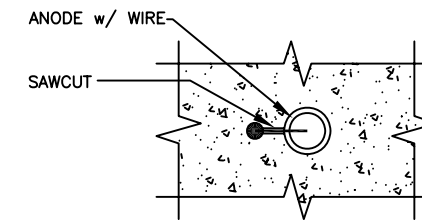
ANODE TO REBAR CONNECTION DETAIL  
N.T.S.



SECTION AT LOCALIZED PIER SHAFT REPAIR (TYP.)  
N.T.S.



TYPICAL LEAD PLUG REINFORCING CONNECTION  
N.T.S.



**NOTES:**

- SEE REFERENCE DRAWING B-5000-34 LAYOUT & REINFORCEMENT OF PIER 13, FOR EXISTING CONCRETE AND REINFORCING DETAILS OF THE PIER. THIS DRAWING IS PROVIDED FOR INFORMATION ONLY AND THERE IS NO GUARANTEE AS TO ITS ACCURACY.
- SAWCUT THE PERIMETER OF ALL REPAIR AREAS TO A DEPTH OF 20mm.
- CONCRETE REMOVALS:
  - TYPE 1 REMOVAL SHALL BE USED IN AREAS WITH MECHANICALLY SOUND CONCRETE OR SURFACE SPALLS. ALL DETERIORATED AND UNSOUND CONCRETE SHALL BE REMOVED TO A MAXIMUM DEPTH OF HALF THE DIAMETER OF THE OUTERMOST REINFORCING BAR AT ANY GIVEN LOCATION. AS A MINIMUM THE SURFACE SHALL BE ROUGHENED TO A 6mm SURFACE PROFILE.
  - TYPE 2 REMOVAL SHALL INCLUDE TYPE 1 REMOVAL AND REQUIRE THE FURTHER REMOVAL OF ALL CONCRETE 20mm BEHIND BOTH SURFACE LAYERS OF REINFORCING STEEL. THE AREAS REQUIRING TYPE 2 REMOVALS SHALL BE IDENTIFIED BY THE CONTRACT ADMINISTRATOR.
- AFTER COMPLETION OF CONCRETE REMOVALS ALL RESULTING CONCRETE SURFACES AND REINFORCING STEEL SHALL BE THOROUGHLY CLEANED BY GRITBLASTING.
- INSTALL GALVASHIELD CC OR GALVASHIELD XP ANODES ON 500mm GRID. THE CC ANODES SHALL BE INSTALLED IN TYPE 1 REMOVAL AREAS AND XP ANODES SHALL BE INSTALLED IN THE TYPE 2 REMOVAL AREAS.
- INSTALL NEW REINFORCING ON THE VERTICAL FACES OF THE PIER CAP REPAIR ONLY. MINIMUM 50mm CLEAR COVER TO REINFORCING STEEL.
- 20mm CHAMFER ON EXPOSED CONCRETE EDGES.

**METRIC**  
WHOLE NUMBERS INDICATE MILLIMETRES  
DECIMALIZED NUMBERS INDICATE METRES

B.M. ELEV.	DESIGNED BY: B.A.N.	
	DRAWN BY: M.R.T.	
	CHECKED BY: B.A.N.	
	APPROVED BY: B.A.N.	
	AUTHORIZED BY:	
1 DIMENSION CORRECTION - SECTION 1	08/01/28 M.R.T.	BID OPPORTUNITY NO.: 43-2008
NO. REVISION	DATE BY	B.A. NEIRINCK BRIDGE PLANNING & OPERATIONS ENGINEER

**CITY OF WINNIPEG**  
PUBLIC WORKS DEPARTMENT  
ENGINEERING DIVISION

ST. JAMES BRIDGE NORTHBOUND  
PIER 13 CONCRETE REPAIRS

SHEET 2 OF 2

HORIZONTAL: N.T.S.  
VERTICAL: N.T.S.

SECTIONS & DETAIL

CITY DRAWING NUMBER:  
B102-08-02