

SEWER SERVICE INFORMATION (S-MA20017670) *

DISTANCE FROM 1ST MH N OF SARGENT AV (S-MH20015158)	
0.4 S	SERVICE CONNECTION E
7.9 S	SERVICE CONNECTION E
8.5 S	SERVICE CONNECTION W
16.0 S	SERVICE CONNECTION E
16.5 S	SERVICE CONNECTION W
23.6 S	SERVICE CONNECTION W
26.1 S	SERVICE CONNECTION W
31.5 S	SERVICE CONNECTION E
32.1 S	SERVICE CONNECTION W
40.0 S	SERVICE CONNECTION W
49.4 S	SERVICE CONNECTION E
50.0 S	SERVICE CONNECTION W

* - INFORMATION FROM SEWER VIDEO INSPECTION

EXISTING WATER SERVICE LOCATION RECORDS

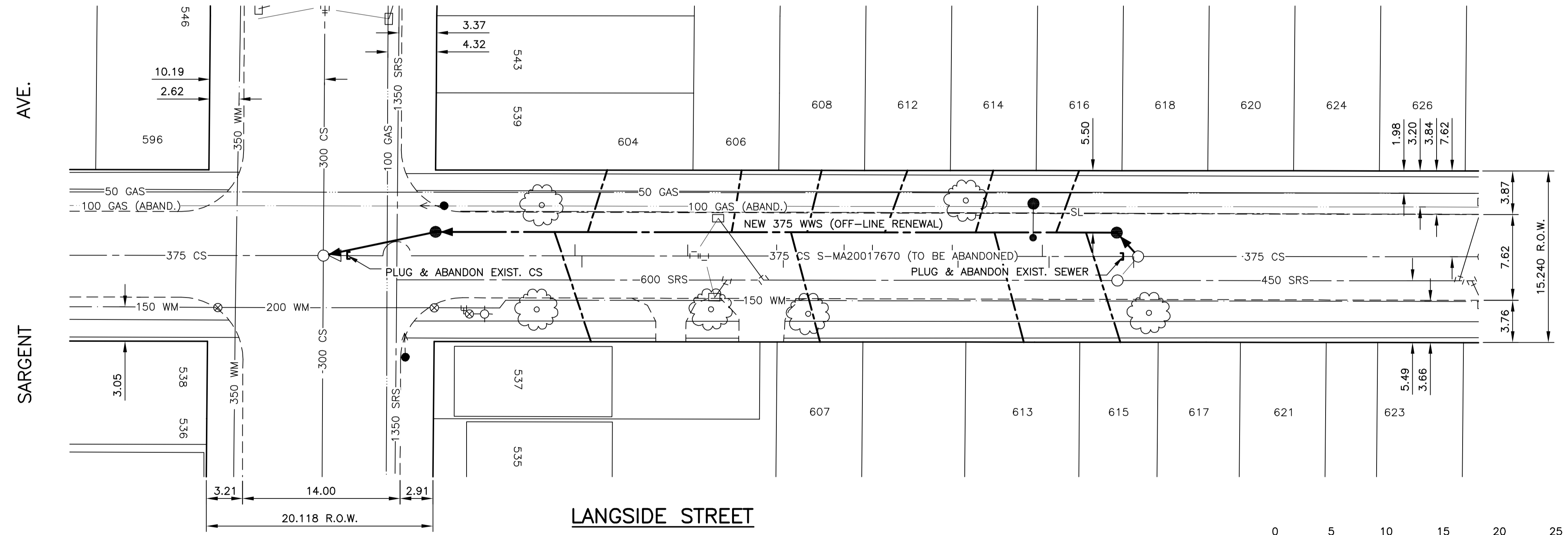
ADDRESS	SIZE/TYPE	SHORT/LONG	CORP. LOCATION	COMMENTS
NO RECORD	NO RECORD	NO RECORD	NO RECORD	NO RECORD

* - INFORMATION FROM EXISTING SERVICE RECORDS

EXISTING SEWER SERVICE LOCATION RECORDS

ADDRESS	SIZE/TYPE	SERVICE LOCATION AT PL
NO RECORD	NO RECORD	NO RECORD

NOTE: CHAINAGES SHOWN ARE ALONG WEST PL ON LANGSIDE STREET



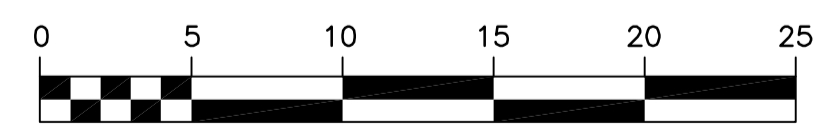
- CONSTRUCTION NOTES:
1. ALL PVC PIPE SHALL HAVE CLASS B-TYPE 2 BEDDING AND ALL CONCRETE PIPE SHALL HAVE CLASS B-SAND BEDDING.
 2. SEWER TO BE RENEWED BY TRENCHLESS METHODS.
 3. CONFIRM THE LOCATION OF ALL SEWER SERVICES.
 4. RENEW SEWER SERVICES TO PROPERTY LINE.
 5. BACKFILL UNDER PAVEMENT, IN SIDEWALKS, & WITHIN 1.0 OF PAVEMENT TO BE CLASS 3.
 6. BACKFILL IN BOULEVARD TO BE CLASS 5.
 7. CATCHBASIN LEADS TO BE INSTALLED AT MIN. 1.0% SLOPE OR AS DIRECTED BY CONTRACT ADMINISTRATOR.

WARNING

- IF POWER EQUIPMENT OR EXPLOSIVES ARE TO BE USED FOR EXCAVATION ON THIS PROJECT THE CONTRACTOR MUST:
1. NOTIFY THE GAS COMPANY OF THE PROPOSED LOCATION OF EXCAVATION.
 2. TAKE PRECAUTION TO AVOID DAMAGE TO GAS COMPANY INSTALLATIONS SEE PROVINCIAL REGULATION 210/72 FOR DETAILS

METRIC

WHOLE NUMBERS INDICATE MILLIMETRES
DECIMALIZED NUMBERS INDICATE METRES



150 mm W.M.	WATERMAIN	150 mm W.M.	HYDRO	150 mm W.M.	WATERMAIN	150 mm W.M.
⊕	HYDRANT	⊕	M.T.S.	⊕	HYDRANT	⊕
⊗	VALVE	⊗	CONCRETE	⊗	VALVE	⊗
⊙	LAND DRAINAGE SEWER	⊙	ASPHALT	⊙	LAND DRAINAGE SEWER	⊙
⊚	WASTE WATER SEWER	⊚	PROPERTY LINE	⊚	WASTE WATER SEWER	⊚
○	MANHOLE	●	SURVEY BAR	⊕	MANHOLE	●
□	CATCH BASIN	■	SERVICE VALVE	⊕	CATCH BASIN	■
▽	CURB INLET	▽	TREE	⊕	CURB INLET	▽
⊕	JUNCTIONS	⊕	LIGHT STANDARD	⊕	JUNCTIONS	⊕
⊕	CULVERT	⊕	FENCE	⊕	CULVERT	⊕
⊕	GAS	⊕	GUY ANCHOR	⊕	GAS	⊕
---	EXISTING	---	PROPOSED	---	EXISTING	---
---	LEGEND-PLAN	---	PROPOSED	---	LEGEND-PROFILE	---

UNDERGROUND STRUCTURES

SUPPLY, U/G STRUCTURES COMMITTEE DATE

NOTE:
LOCATION OF UNDERGROUND STRUCTURES AS SHOWN ARE BASED ON THE BEST INFORMATION AVAILABLE, BUT NO GUARANTEE IS GIVEN THAT ALL EXISTING UTILITIES ARE SHOWN OR THAT THE GIVEN LOCATIONS ARE EXACT. CONFIRMATION OF EXISTENCE AND EXACT LOCATION OF ALL SERVICES MUST BE OBTAINED FROM THE INDIVIDUAL UTILITIES BEFORE PROCEEDING WITH CONSTRUCTION.

NO.	REVISIONS	DATE	BY
3	REISSUED AS FSR	08-14-08	S.C.C.
2	ISSUED FOR TENDER	08-05-08	S.C.C.
1	ISSUED FOR FINAL REVIEW	07-22-08	S.C.C.

DESIGNED BY	C.L.P.
DRAWN BY	C.L.P.
CHECKED BY	S.C.C.
APPROVED BY	ORIGINAL SIGNED BY D.P.K.
HOR. SCALE	1 : 250
VERTICAL	1 : 50
DATE	AUGUST 2008

ENGINEER'S SEAL

PROVINCE OF MANITOBA

D.P. KRAHN

08/18/08

Member 4226

REGISTERED PROFESSIONAL ENGINEER

RELEASED FOR CONSTRUCTION ORIGINAL SIGNED BY KAS ZUREK, P.Eng.

CONSULTANT PROJECT NO. 08-9100-0201

THE CITY OF WINNIPEG
WATER AND WASTE DEPARTMENT

2008 WATERMAIN RENEWALS, SEWER RENEWALS AND REPAIRS, CONTRACT 19

LANGSIDE STREET
1ST MH N SARGENT AV.
TO MH SARGENT AV. (CL)

CITY DRAWING NUMBER 08640

SHEET 15 OF 27

BID OPPORTUNITY 525-2008