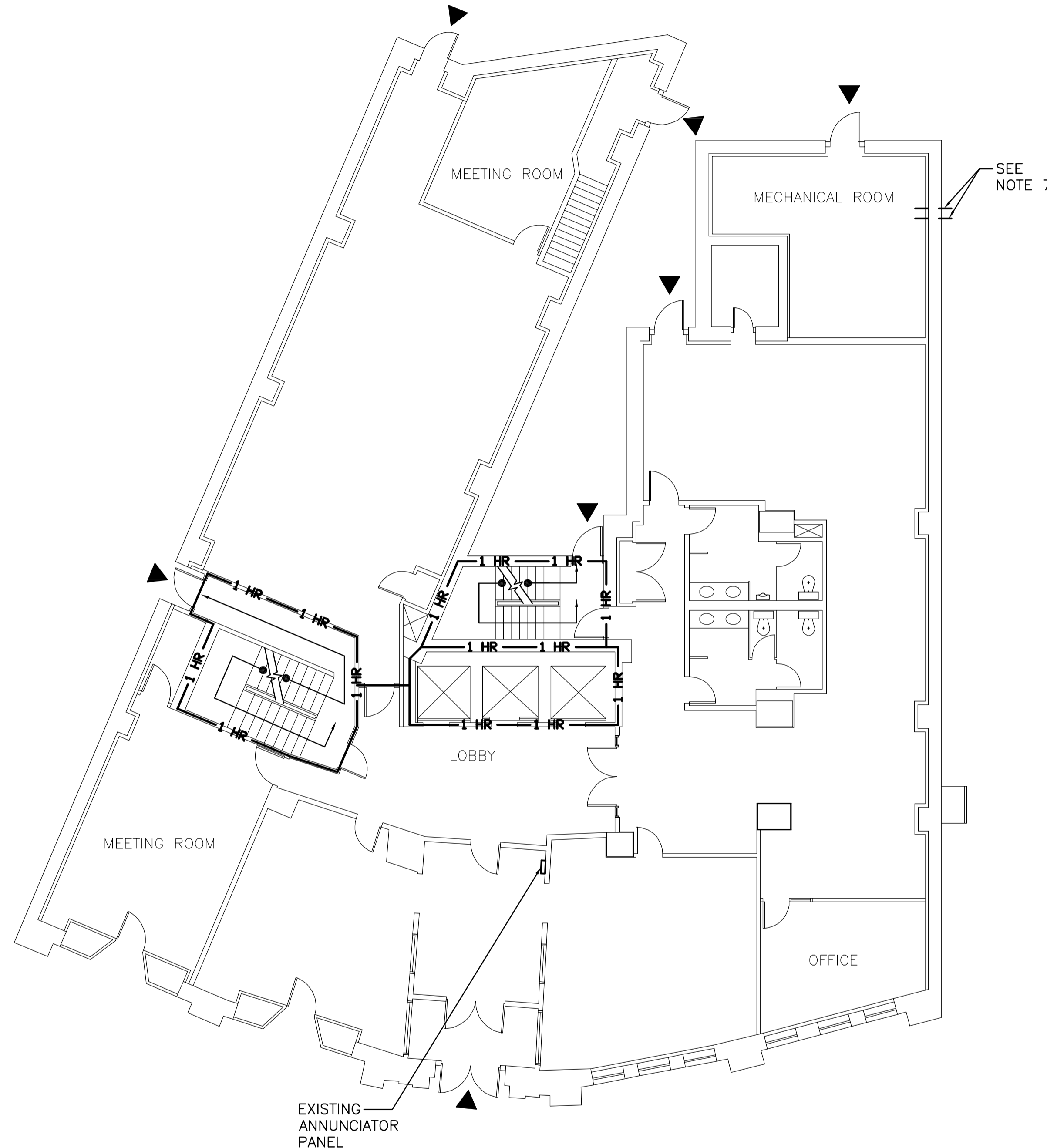
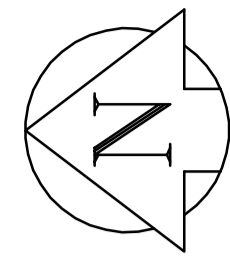


BASEMENT - LIFE SAFETY PLAN
SCALE: 1:100



MAIN FLOOR - LIFE SAFETY PLAN
SCALE: 1:100

NOTES :

LEGEND

- TRAVEL DISTANCE MAX AS PER NBC 3.4.2.5 FOR GROUP D 40M
- 1 HR FIRE RATING
- FROM EXIST BRICK WALL 50-75mm GAP TO SUIT IRREGULAR SURFACE 92 STL STUDS @ 400 O.C. MINERAL WOOL INSULATION 6.0 MIL POLY VAPOUR BARRIER 16 SILICONIZED GYP BD
- 16 FIRE RATED GYP BD ON 92 STL STUDS @ 600 O.C. 16 FIRERATED GYP BD (1 HR ULC DESIGN W407 FIRE RATED WALLS)
- DOOR NUMBERS
- ROOM NUMBERS
- FLOOR DRAINS

KEYNOTES

- ① THE CONTRACTOR SHALL PROVIDE 100 HIGH HOUSEKEEPING CONCRETE PAD TO EXTEND MINIMUM OF 150mm BEYOND ALL EQUIPMENT.

GENERAL NOTES

1. ALL NEW DOORS D01, D02, D03 WILL BE 3/4 ULC FIRE RATED DOORS & FRAMES, C/W DOOR CLOSER AND DOOR LOCKS.
2. ALL FIRE RATED WALLS SHALL BE CONSTRUCTED FROM CONCRETE FLOOR TO U/S OF CONCRETE SLAB WITH FIRE STOPPING AS REQUIRED
3. PROVIDE 125 WIDE x 190 HIGH CONCRETE CURB AROUND THE NEW MECHANICAL ROOM AND ELECTRICAL ROOM.
4. PROVIDE 25mm DEFLECTION ALLOWANCE AT TOP OF DRYWALL PARTITION AND FIRESTOPPING.
5. ALL DAMAGES TO FLOOR, WALL OR SLAB, CEILING MUST BE REINSTATED IN GOOD CONDITION.
6. FOR ELECTRICAL FIXTURES AND MECHANICAL FIXTURES, SEE RESPECTIVE DISCIPLINE DRAWINGS FOR COORDINATION.
7. SEAL & CAULK ALL AROUND NEW OPENING FOR PIPES ON BOTH SIDES OF WALL. (SEE MECH DWG FOR SIZE AND LOCATION)

0	ISSUED FOR ADDENDUM 1	DC	2008.12.05
NO.	REVISION/DESCRIPTION	BY	DATE

SEALS

EARTH TECH | AECOM



DRAWN BY	SIC	CHECKED BY	APPROVED
DATE	2008.11.26	USER APPROVAL	

CITY OF WINNIPEG PLANNING, PROPERTY AND DEVELOPMENT DEPARTMENT CIVIC ACCOMMODATIONS DIVISION 300 - 65 GARRY ST. R3C 4K4

PROJECT
CONFEDERATION BUILDING
SUPPLEMENTARY HEATING UPGRADES
PHASE 1 - CITY BID OPP. NO. 757-2008
457 MAIN STREET, WINNIPEG, MANITOBA

SHEET TITLE
**BASEMENT & MAIN FLOOR
LIFE SAFETY PLAN**

Certificate of Authorization
Earth Tech Canada Inc.
No. 730 Expiry: April 30, 2009

AECOM

© 2008 EARTH TECH (CANADA) INC. ALL RIGHTS RESERVED. THIS DOCUMENT IS PROTECTED BY COPYRIGHT LAW AND MAY NOT BE USED, REPRODUCED OR MODIFIED IN ANY MANNER OR FOR ANY PURPOSE EXCEPT WITH THE WRITTEN PERMISSION OF EARTH TECH (CANADA) INC. DOING BUSINESS AS AECOM (AECOM) OR A PARTY TO WHICH ITS COPYRIGHT HAS BEEN ASSIGNED. AECOM ACCEPTS NO RESPONSIBILITY, AND DENIES ANY LIABILITY WHATSOEVER, TO ANY PARTY THAT USES, REPRODUCES, MODIFIES, OR RELIES ON THIS DOCUMENT WITHOUT AECOM'S EXPRESS WRITTEN CONSENT.

SCALE	PROJECT NO.	SHEET NO.
1:100	105111	A02