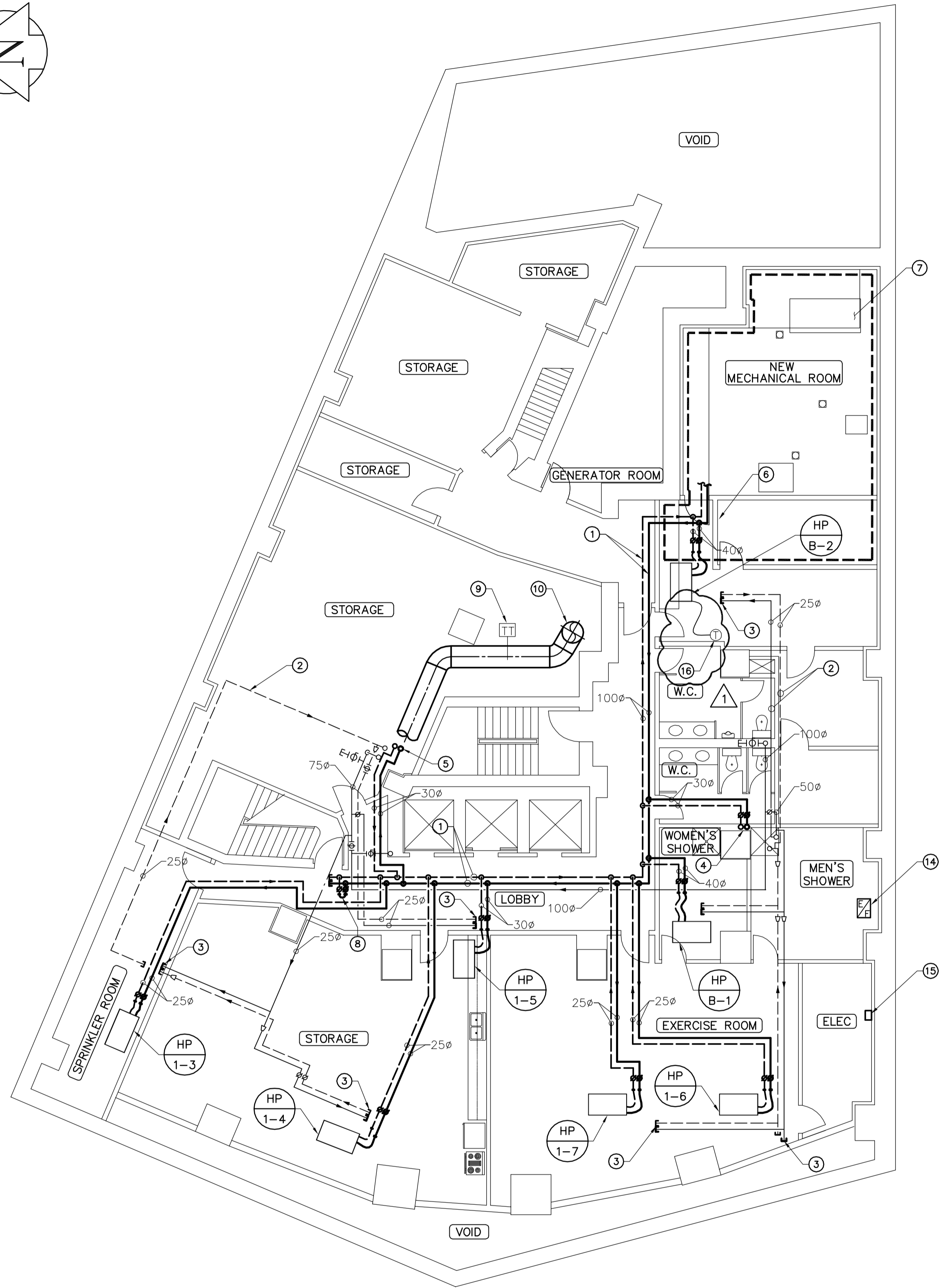
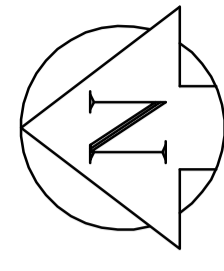
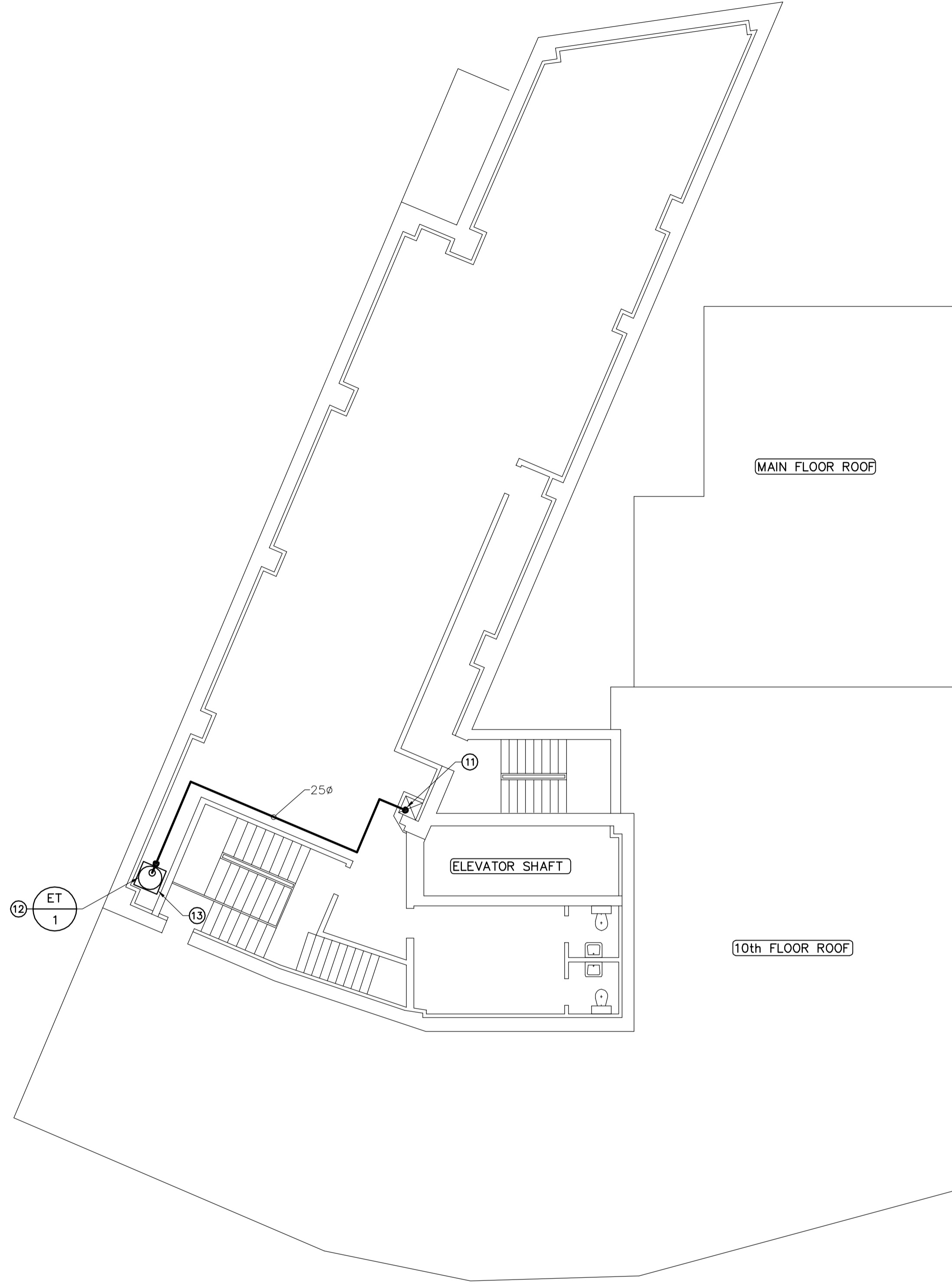


FILE NAME: 757-2008-M02-R1.dwg DATE: 2008.08.31 DESCRIPTION: BASEMENT MECHANICAL PLAN PROJECT No.: 105111 ADDRESS: 457 MAIN STREET



BASEMENT - MECHANICAL PLAN
SCALE: 1:100



11th FLOOR - MECHANICAL PLAN
SCALE: 1:100

- NOTES :
- CONSTRUCTION NOTES**
- ① RUN NEW HWS AND HWR PIPING IN BASEMENT CEILING SPACE. SIZE AS SHOWN.
 - ② EXISTING HYDRONIC SUPPLY AND RETURN LINES TO REMAIN IN CEILING SPACE.
 - ③ CAP EXISTING HYDRONIC SUPPLY AND RETURN BRANCHES PREVIOUSLY SERVING EXISTING HEAT PUMPS. CONNECT NEW HWS AND HWR BRANCHES TO EXISTING HEAT PUMP c/w NEW FLEXIBLE PIPE CONNECTIONS AND BALANCING VALVES.
 - ④ NEW HWS AND HWR BRANCHES RISING TO EXISTING HEAT PUMP LOCATED IN MAIN FLOOR CEILING SPACE. SIZE AS SHOWN.
 - ⑤ NEW HWS AND HWR BRANCHES RISING TO EXISTING HEAT PUMP (HP1-2) LOCATED IN CLOSET ON MAIN FLOOR. SIZE AS SHOWN.
 - ⑥ SEE DRAWING M05 FOR CONTINUATION.
 - ⑦ SEE DRAWING M05 FOR MECHANICAL ROOM LAYOUTS.
 - ⑧ FUTURE 40ø CONNECTION.
 - ⑨ PROVIDE NEW MAKE-UP AIR SUPPLY AIR TEMPERATURE TRANSMITTER WIRED BACK TO THE BMS.
 - ⑩ EXISTING 700ø SUPPLY AIR DUCT DOWN FROM MAKE-UP AIR UNIT.
 - ⑪ TIE INTO EXISTING HWS LINES.
 - ⑫ NEW FLOOR-MOUNTED EXPANSION TANK ET-1 c/w SHUT-OFF VALVE, PRESSURE GAUGE AND AUTOMATIC AIR VENT SET TO 345 kPa (50 PSI).
 - ⑬ PROVIDE STAINLESS STEEL SQUARE OR ROUND DRIP PAN UNDERNEATH EXPANSION TANK ET-1. PAN SHALL HAVE A MINIMUM 50mm HIGH SIDES ALL AROUND. PAN TO BE LARGER THAN DIAMETER OF TANK.
 - ⑭ EXISTING EXHAUST FAN LOCATED IN CEILING SPACE.
 - ⑮ NEW SPEED CONTROLLER MOUNTED ON WALL SERVING EXISTING EXHAUST FAN. REDUCE AIR VOLUME OF EXHAUST FAN TO 300 L/S. COORDINATE FINAL LOCATION OF SPEED CONTROLLER WITH CONTRACT ADMINISTRATOR.
 - ⑯ REMOVE EXISTING HEAT PUMP THERMOSTAT PRIOR TO WALL UPGRADES. RE-INSTALL AND RE-CONNECT THERMOSTAT UPON WALL UPGRADE COMPLETION.

- GENERAL NOTES**
1. COORDINATE WITH OTHER TRADES SO AS TO PREVENT CONFLICTS.
 2. GENERAL CONTRACTOR SHALL COORDINATE WITH HOUSEKEEPING CONTRACTOR ON FINAL HOUSEKEEPING PAD DIMENSIONS. PADS TO EXTEND 150mm BEYOND FINAL EQUIPMENT DIMENSIONS.

1	ISSUED FOR ADDENDUM NO. 1	DL	2008.12.05
0	ISSUED FOR TENDER	DL	2008.11.28
NO.	REVISION/DESCRIPTION	BY	DATE

SEALS



DRAWN BY	DL	CHECKED BY	PVL	APPROVED	PVL
DATE	2008.08.31	USER APPROVAL			

CITY OF WINNIPEG
PLANNING, PROPERTY AND
DEVELOPMENT DEPARTMENT
CIVIC ACCOMMODATIONS DIVISION
300 - 65 GARRY ST. R3C 4K4

PROJECT
CONFEDERATION BUILDING
SUPPLEMENTARY HEATING UPGRADES
PHASE 1 - CITY BID OPP. NO. 757-2008
457 MAIN STREET, WINNIPEG, MANITOBA

SHEET TITLE
**BASEMENT
11th FLOOR
MECHANICAL LAYOUTS**

SCALE	PROJECT NO.	SHEET NO.
AS SHOWN	105111	M02



APEGM
Certificate of Authorization
Earth Tech Canada Inc.
No. 730 Expiry: April 30, 2009

AECOM
© 2008 EARTH TECH (CANADA) INC. ALL RIGHTS RESERVED. THIS DOCUMENT IS PROTECTED BY COPYRIGHT LAW AND MAY NOT BE USED, REPRODUCED OR MODIFIED IN ANY MANNER OR FOR ANY PURPOSE EXCEPT WITH THE WRITTEN PERMISSION OF EARTH TECH (CANADA) INC. DOING BUSINESS AS AECOM (AECOM) OR A PARTY TO WHICH ITS COPYRIGHT HAS BEEN ASSIGNED. AECOM ACCEPTS NO RESPONSIBILITY, AND DENIES ANY LIABILITY WHATSOEVER, TO ANY PARTY THAT USES, REPRODUCES, MODIFIES, OR RELIES ON THIS DOCUMENT WITHOUT AECOM'S EXPRESS WRITTEN CONSENT.