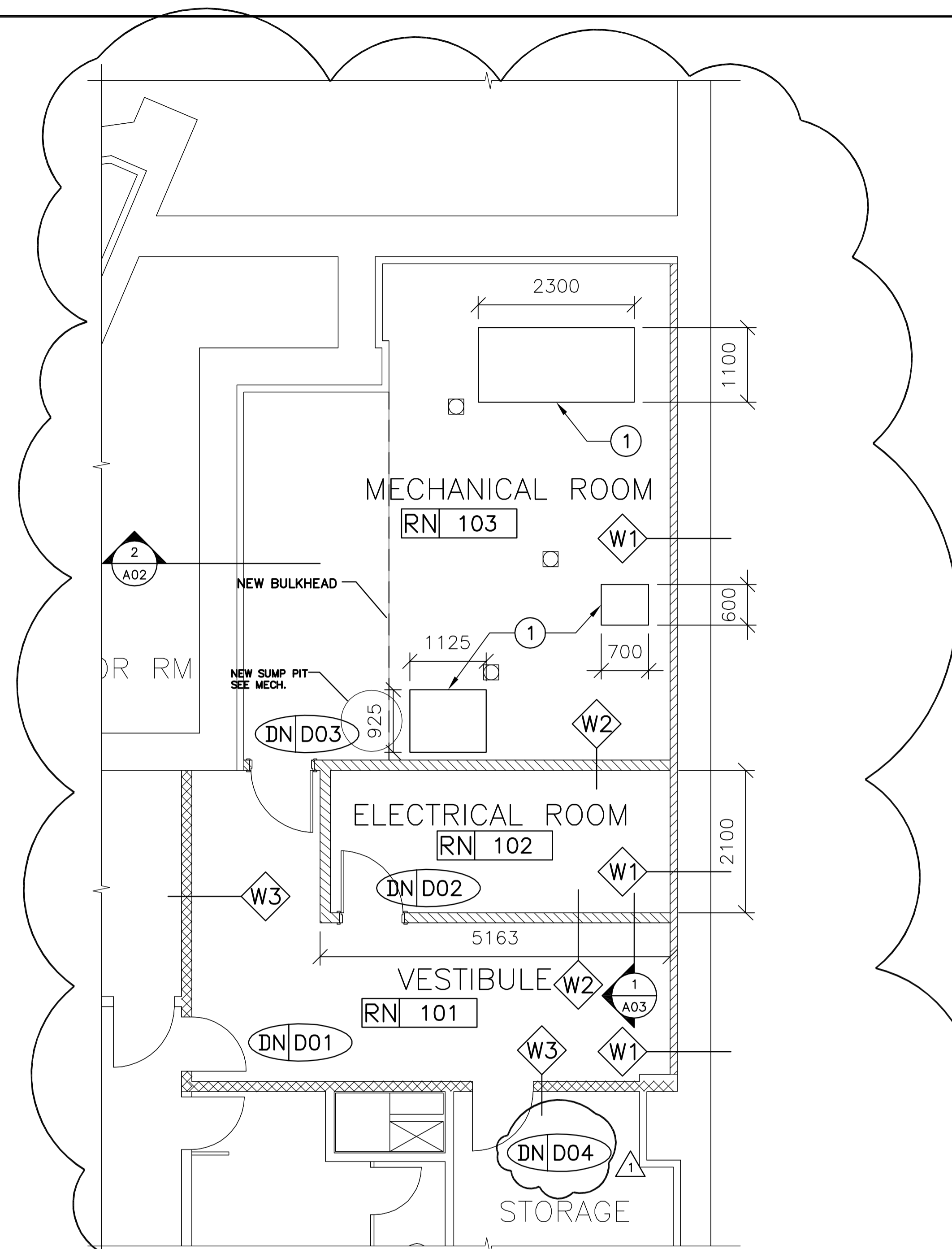
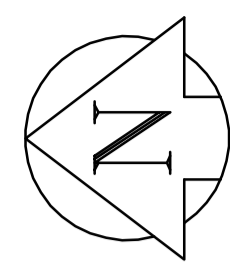
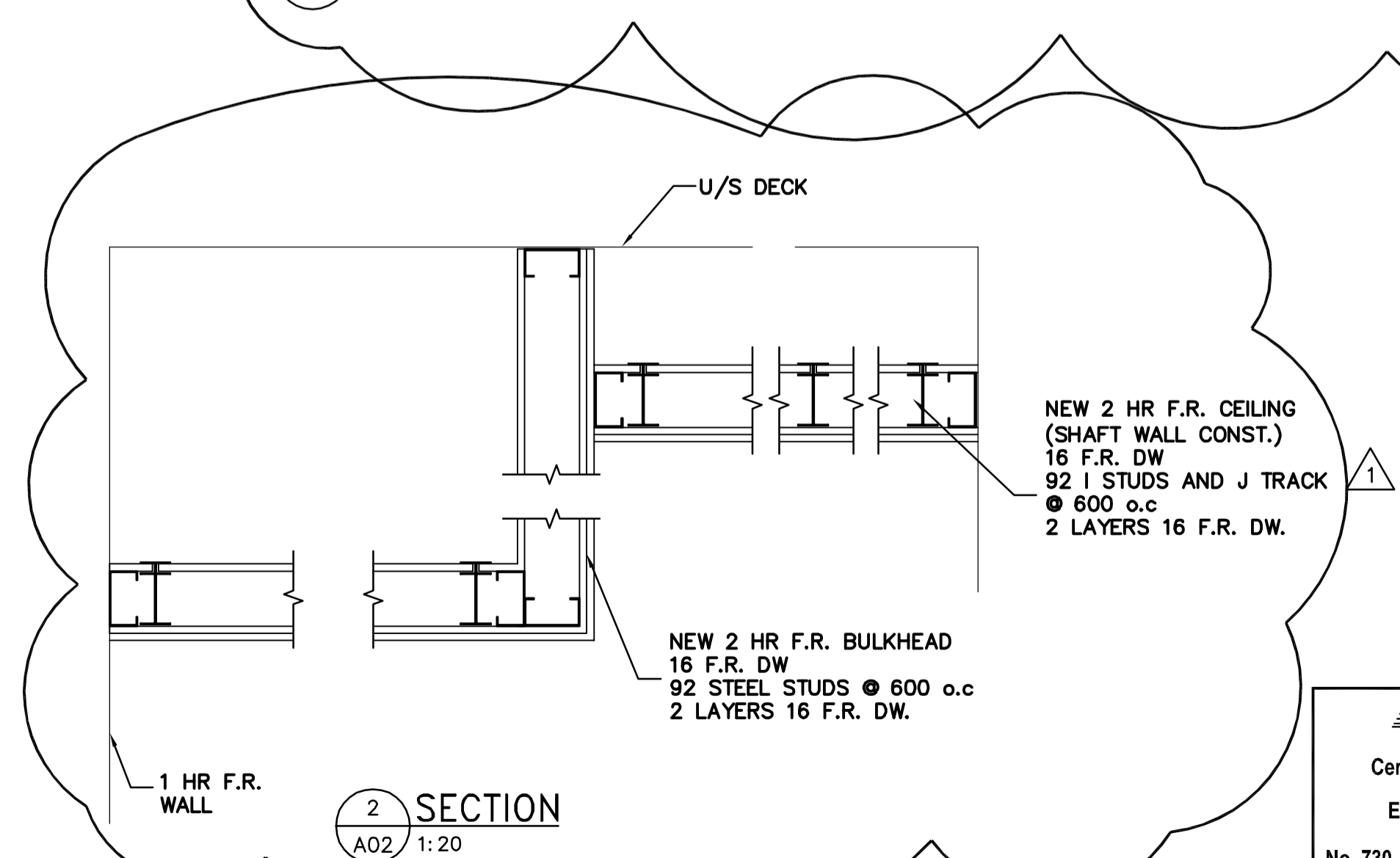


**BASEMENT - LIFE SAFETY PLAN**  
SCALE: 1:100



**1 ENLARGED PLAN**  
A02 1:50



**2 SECTION**  
A02 1:20

NOTES :

**LEGEND**

- TRAVEL DISTANCE MAX AS PER NBC 3.4.2.5 FOR GROUP D 40M
- 1 HR FIRE RATING
- NEW WALLS
- MODIFICATION TO EXISTING WALL
- SET WALL STUDS 50 TO 75mm FROM EXIST BRICK WALL TO SUIT IRREGULAR SURFACE  
92 STL STUDS @ 400 O.C.  
MINERAL WOOL INSULATION  
6.0 MIL POLY VAPOUR BARRIER  
16 SILICONIZED GYP BD
- 16 FIRE RATED GYP BD ON 92 STL STUDS @ 600 O.C.  
16 FIRERATED GYP BD  
(1 HR ULC DESIGN W407 FIRE RATED WALLS)
- 16 FIRE RATED GYP BD ON EXIST. STL STUDS  
MINNERAL WOOL INSULATION  
16 FIRERATED GYP BD  
(1 HR ULC DESIGN W407 FIRE RATED WALLS)
- DOOR NUMBERS
- ROOM NUMBERS
- FLOOR DRAINS

**KEYNOTES**

- ① THE CONTRACTOR SHALL PROVIDE 100 HIGH HOUSEKEEPING CONCRETE PAD TO EXTEND MINIMUM OF 150mm BEYOND ALL EQUIPMENT.

**GENERAL NOTES**

- 1. ALL NEW DOORS D01, D02, D03 WILL BE 3/4 ULC FIRE RATED DOORS & FRAMES, C/W DOOR CLOSER AND DOOR LOCKS.
- 2. ALL FIRE RATED WALLS SHALL BE CONSTRUCTED TO 300 ABOVE FIRE RATED CEILING. STEEL STUDS TO U/S OF DECK
- 3. PROVIDE 125 WIDE x 190 HIGH CONCRETE CURB AROUND THE NEW MECHANICAL ROOM AND ELECTRICAL ROOM.
- 4. PROVIDE 25mm DEFLECTION ALLOWANCE AT TOP OF DRYWALL PARTITION AND FIRESTOPPING.
- 5. CONTRACTOR TO MAKE GOOD ALL AFFECTED AREAS
- 6. FOR ELECTRICAL FIXTURES AND MECHANICAL FIXTURES, SEE RESPECTIVE DISCIPLINE DRAWINGS FOR COORDINATION.
- 7. SEAL & CAULK ALL AROUND NEW OPENING FOR PIPES ON BOTH SIDES OF WALL. (SEE MECH DWG FOR SIZE AND LOCATION)

1	ISSUED FOR ADDENDUM 4	GCP	2008/01/06
0	ISSUED FOR ADDENDUM 1	DC	2008/12/05
NO.	REVISION/DESCRIPTION	BY	DATE

SEALS  
**EARTH TECH | AECOM**



DRAWN BY	SIC	CHECKED BY	APPROVED
DATE	2008.11.26	USER APPROVAL	

CITY OF WINNIPEG  
PLANNING, PROPERTY AND DEVELOPMENT DEPARTMENT  
CIVIC ACCOMMODATIONS DIVISION  
300 - 65 GARRY ST. R3C 4K4

PROJECT  
CONFEDERATION BUILDING  
SUPPLEMENTARY HEATING UPGRADES  
PHASE 1 - CITY BID OPP. NO. 757-2008  
457 MAIN STREET, WINNIPEG, MANITOBA

SHEET TITLE  
**BASEMENT & MAIN FLOOR  
LIFE SAFETY PLAN**

**APEGM**  
Certificate of Authorization  
Earth Tech Canada Inc.  
No. 730 Expiry: April 30, 2009

**AECOM**  
© 2008 EARTH TECH (CANADA) INC. ALL RIGHTS RESERVED.  
THIS DOCUMENT IS PROTECTED BY COPYRIGHT LAW AND MAY NOT BE USED, REPRODUCED OR MODIFIED IN ANY MANNER OR FOR ANY PURPOSE EXCEPT WITH THE WRITTEN PERMISSION OF EARTH TECH (CANADA) INC. DOING BUSINESS AS AECOM (AECOM) OR A PARTY TO WHICH ITS COPYRIGHT HAS BEEN ASSIGNED. AECOM ACCEPTS NO RESPONSIBILITY, AND DENIES ANY LIABILITY WHATSOEVER, TO ANY PARTY THAT USES, REPRODUCES, MODIFIES, OR RELIES ON THIS DOCUMENT WITHOUT AECOM'S EXPRESS WRITTEN CONSENT.

SCALE	PROJECT NO.	SHEET NO.
1:100	105111	A02