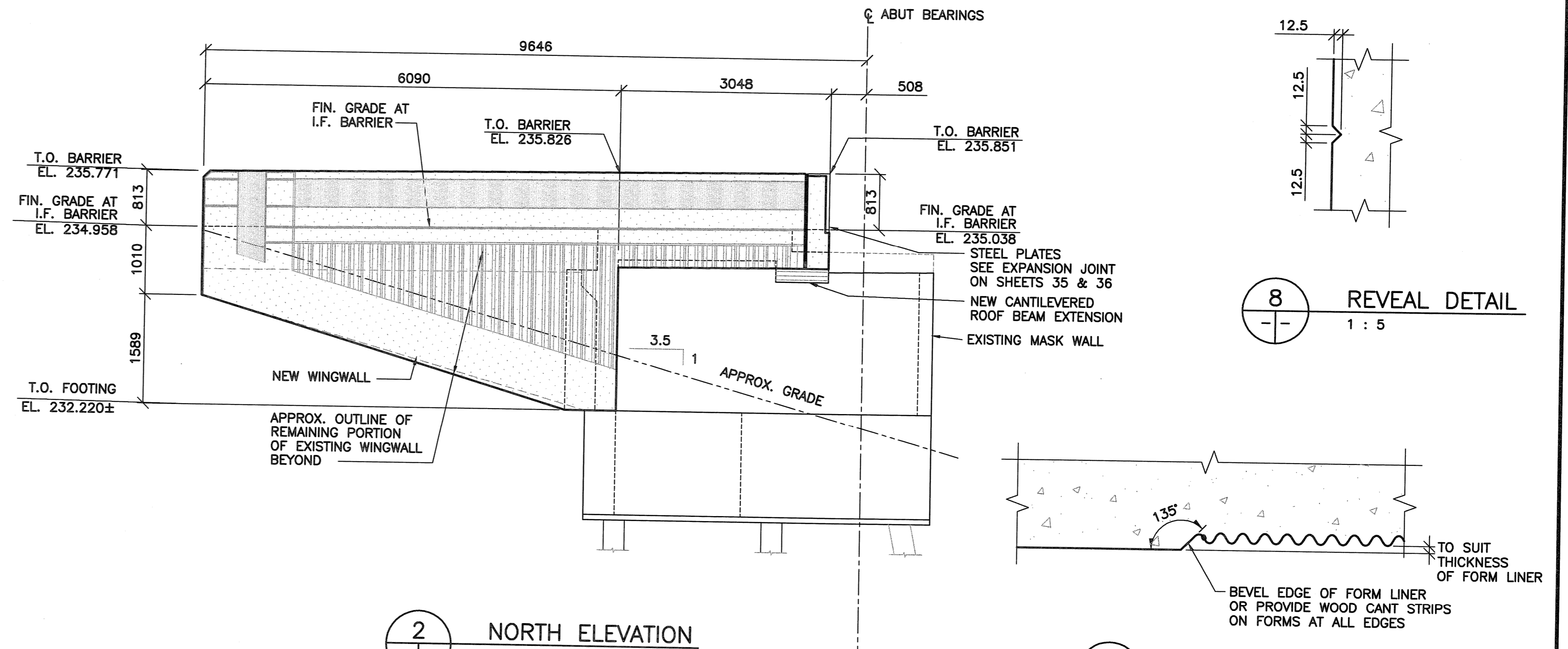
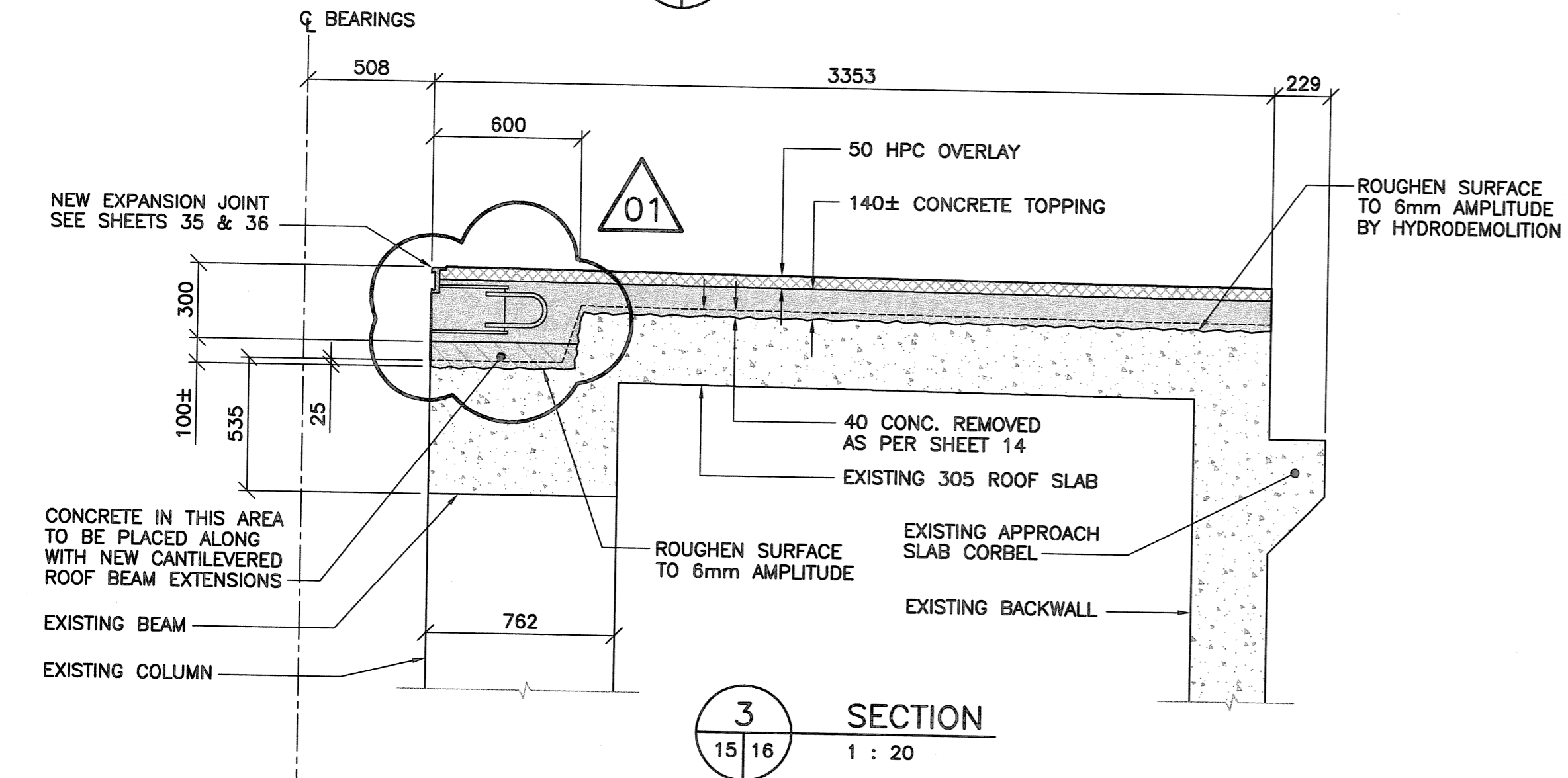
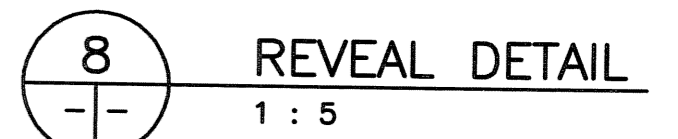


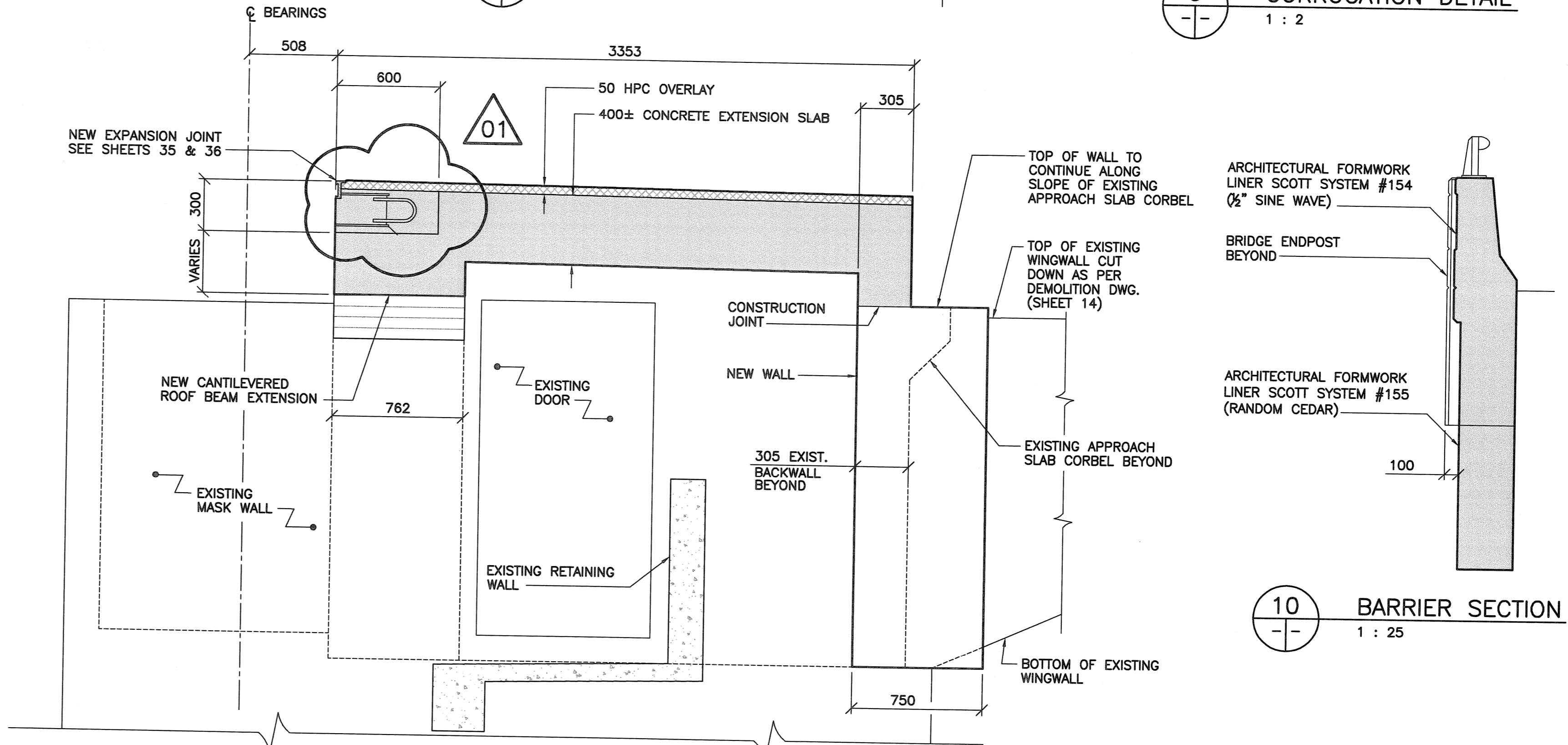
1 SOUTH ELEVATION
1 : 50



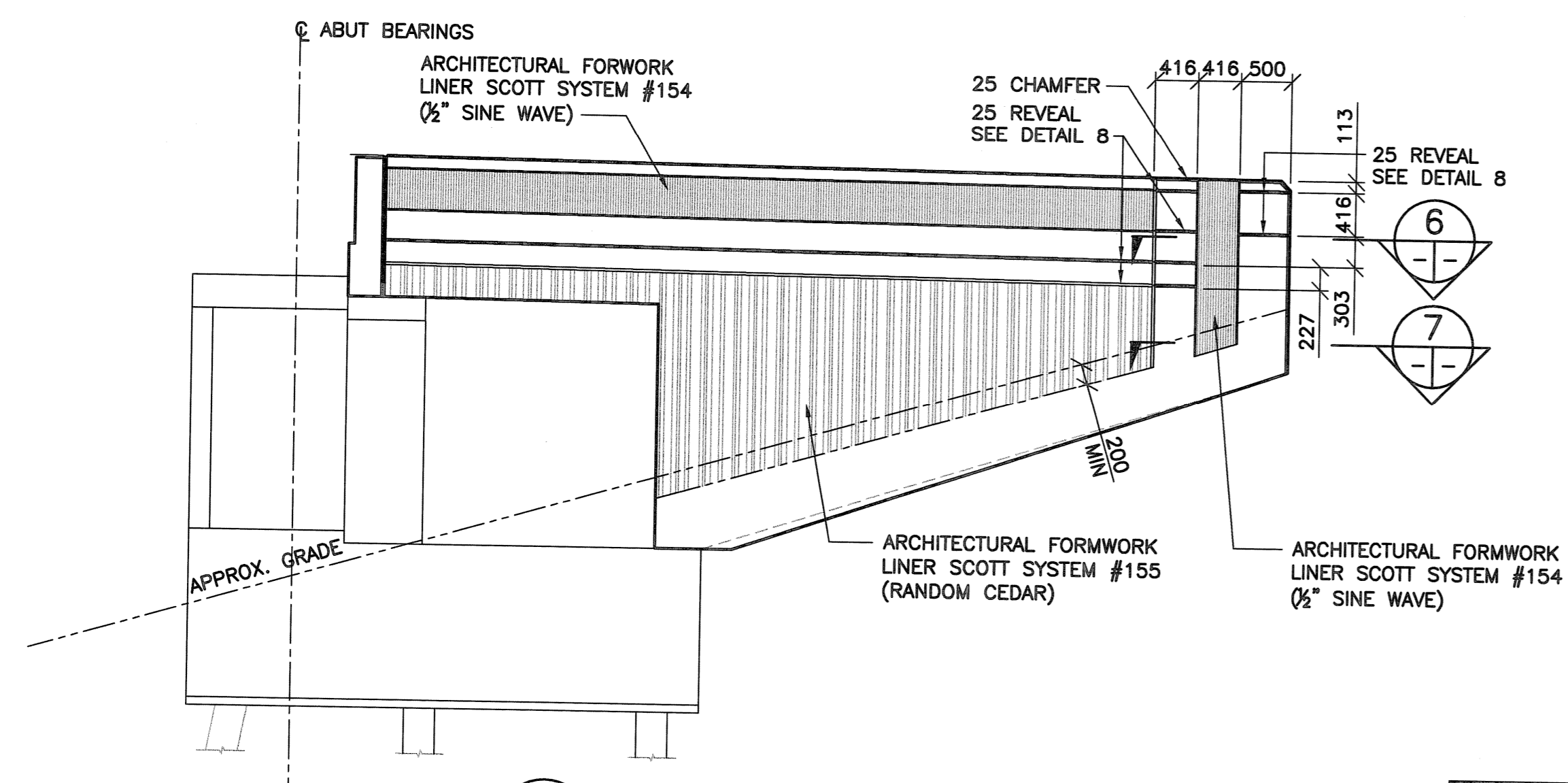
2 NORTH ELEVATION
1 : 50



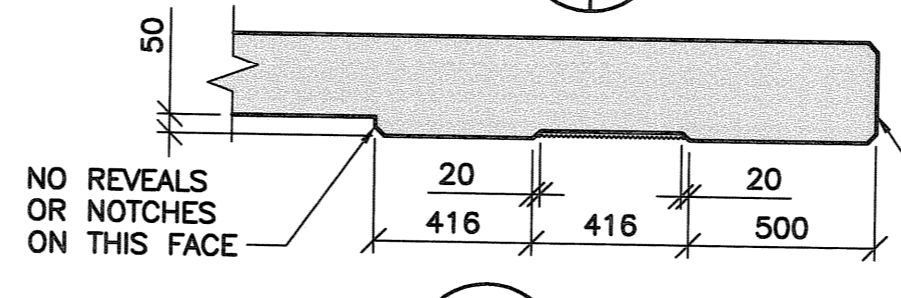
3 SECTION
1 : 20



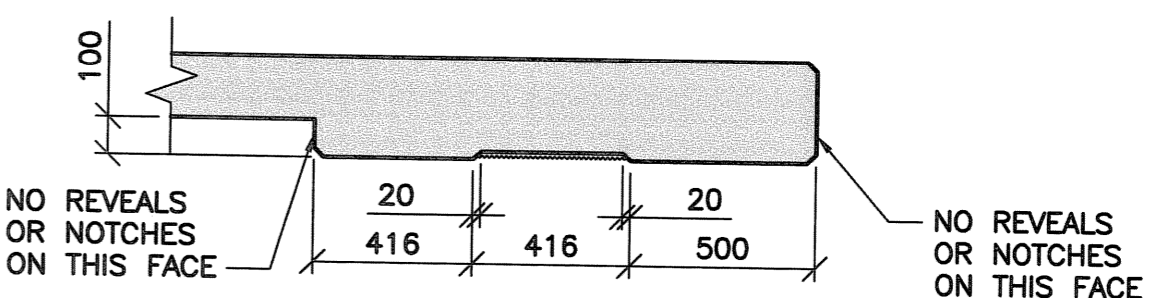
4 SECTION
1 : 20



5 TYP ABUTMENT TEXTURE DETAILS
1 : 50
- MIRRORED ON NORTH ABUTMENT FACE



6 SECTION
1 : 20
- SEE DETAIL 9



7 SECTION
1 : 20
- SEE DETAIL 9



B.M. ELEV.	F.B.	WARDROP Engineering Inc.		ORIGINAL DRAWING REVISION "00" SEALED BY E.F. SHEHATA 08.02.05
		DESIGNED BY E.F.S.	CHECKED BY [Signature]	
		DRAWN BY P.S./C.L.	APPROVED BY [Signature]	
01 ISSUED FOR ADDENDUM #2	08.03.05	HOR. SCALE: AS NOTED	ACCEPTED BY [Signature]	DATE
00 ISSUED FOR TENDER	08.02.05	VERTICAL:		
NO. REVISIONS	DATE	DATE 08.02.05	RANDY FINIGAN, P. ENG BRIDGES PROJECTS ENGINEER	CONSULTANT DRAWING NO. 0600070700-DWG-S1116-00

THE CITY OF WINNIPEG
PUBLIC WORKS DEPARTMENT
TRANSPORTATION ENGINEERING DIVISION

Winnipeg

FORT GARRY TWIN BRIDGES WESTBOUND STRUCTURE REHABILITATION AND ASSOCIATED ROADWORKS

EAST ABUTMENT - CONCRETE DETAILS 2

CITY DRAWING NUMBER **B173-08-016W**
SHEET **16** OF **54**

16