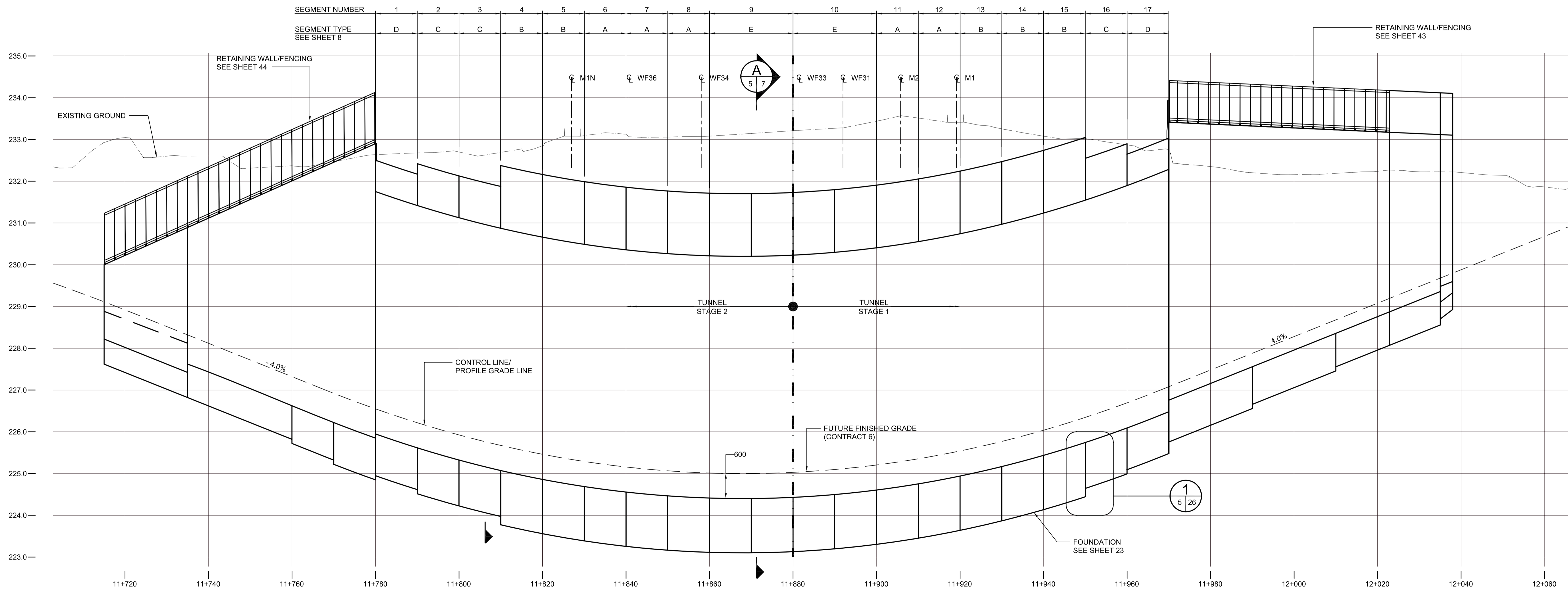


PLAN
SCALE 1:500



ELEVATION
SCALE HORZ 1:500
VERT 1:50

- NOTES:
1. TRACKS ARE SHOWN IN ORIGINAL LOCATION. SEE TRACK DETOUR DRAWINGS FOR TEMPORARY LOCATIONS DURING CONSTRUCTION.
 2. SECTION TAKEN ALONG WEST ELEVATION.



LOCATION UNDERGROUND	APPROVED STRUCTURES	B.M. ELEV.	DESIGNED BY	KGW
SUPV. U/G STRUCTURES COMMITTEE	DATE		DRAWN BY	RCB
NOTE:			CHECKED BY	KGW
LOCATION OF UNDERGROUND STRUCTURES AS SHOWN ARE BASED ON THE BEST INFORMATION AVAILABLE. BUT NO GUARANTEE IS GIVEN THAT ALL EXISTING UTILITIES ARE SHOWN OR THAT THE GIVEN LOCATIONS ARE EXACT. CONFIRMATION OF EXISTENCE AND EXACT LOCATION OF ALL SERVICES MUST BE OBTAINED FROM THE INDIVIDUAL UTILITIES BEFORE PROCEEDING WITH CONSTRUCTION.			APPROVED BY	DPK
1	ISSUED WITH ADDENDUM #4	11/04/2009	RHB	
0	ISSUED FOR TENDER	10/13/2009	RCB	
NO.	REVISIONS	DATE	BY	DATE
				2009/06/24

APPROVED BY	DATE	2009/06/24
DESIGNED BY	DATE	
DRAWN BY	DATE	
CHECKED BY	DATE	
APPROVED BY	DATE	
HOR. SCALE	AS SHOWN	
VERTICAL	AS SHOWN	

DILLON CONSULTING

RELEASED FOR CONSTRUCTION

DATE

ENGINEER'S SEAL

PROVINCE OF MANITOBA

ORIGINAL SIGNED BY:

K. G. WILLIS

10.13.2009

REGISTERED PROFESSIONAL ENGINEER

CONSULTANT PROJECT NO.

088813

THE CITY OF WINNIPEG

TRANSIT DEPARTMENT

Winnipeg

SOUTHWEST RAPID TRANSIT CORRIDOR - STAGE 1

TRANSITWAY TUNNEL AT CN RIVERS SUBDIVISION

MILEAGE 1.38 & ASSOCIATED WORKS

CITY DRAWING NUMBER

U237-09-05

SHEET

05 OF 73

CONSULTANT DRAWING NUMBER

C4-G104-T

GENERAL ARRANGEMENT

G:\cadd\088813\Contract\Contract_1\Current\C4-G104-P.dwg