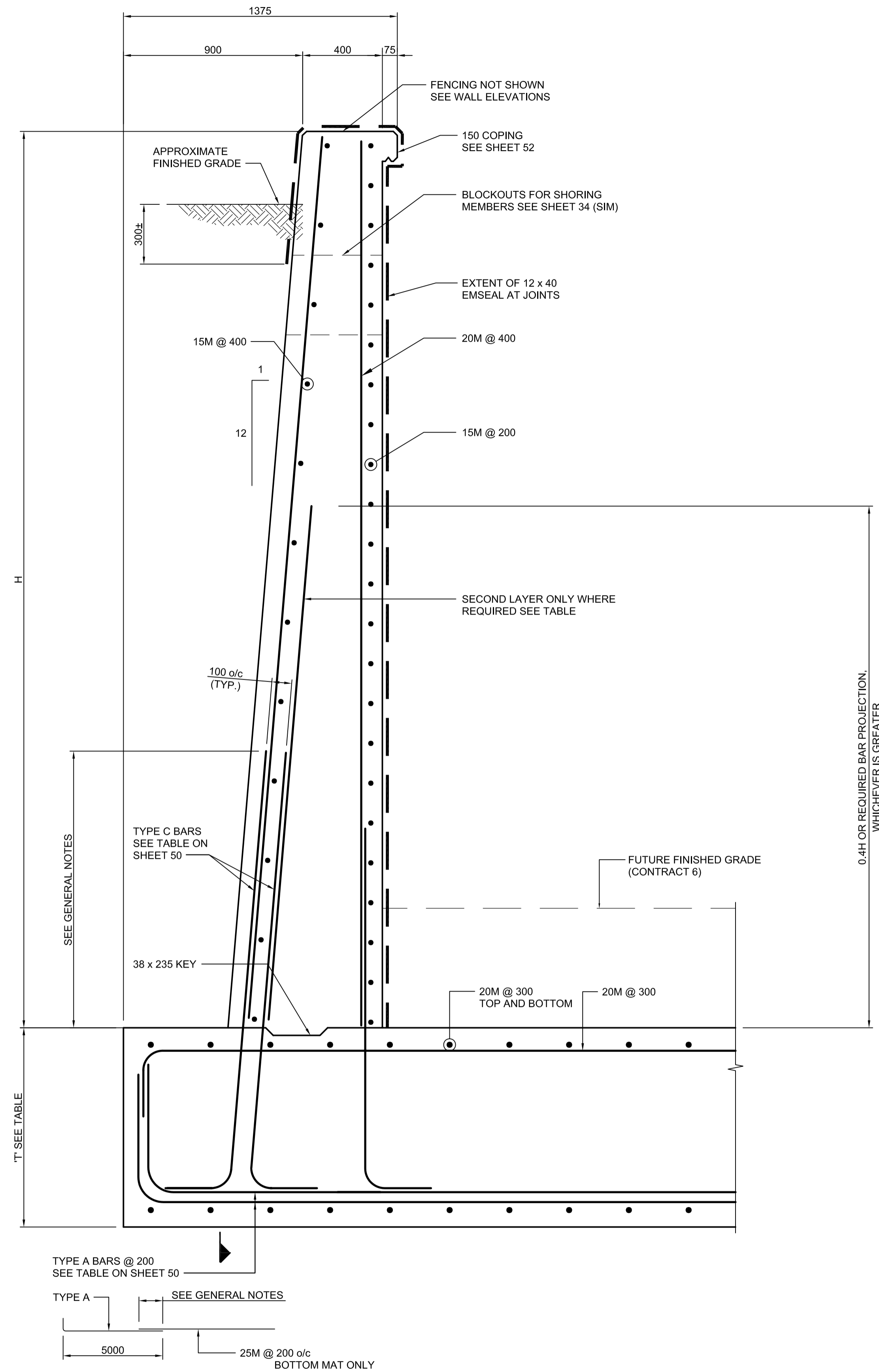


COUNTERFORT OPTION



TAPERED OPTION

- NOTES:
1. RETAINING WALLS ARE DIVIDED INTO 5 m SEGMENTS FOR DETAILING PURPOSES.
 2. EACH SEGMENT MAY BE CONSTRUCTED USING EITHER THE COUNTERFORT OPTION OR THE TAPERED WALL OPTION. DIFFERENT OPTIONS MAY BE USED AT EAST AND WEST ENDS OF THE SAME SEGMENT.
 3. WALL JOINTS TO BE SPACED AT 5m o/c MAXIMUM
 4. POUR ALTERNATE WALL SEGMENTS WITH A MINIMUM OF 7 DAYS BETWEEN ADJACENT POURS.

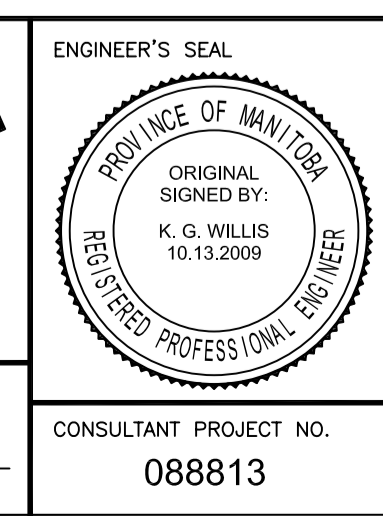
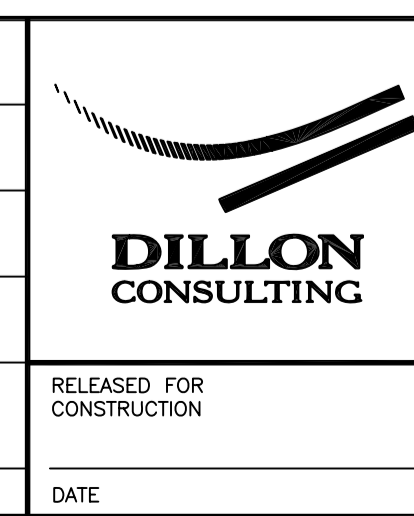
TYPICAL SEGMENT PLAN

SECTION A
SCALE 1:15



LOCATION UNDERGROUND	APPROVED STRUCTURES	B.M. ELEV.	DESIGNED BY	KGW
SUPV. U/G STRUCTURES COMMITTEE	DATE		DRAWN BY	RCB
NOTE:			CHECKED BY	KGW
LOCATION OF UNDERGROUND STRUCTURES AS SHOWN ARE BASED ON THE BEST INFORMATION AVAILABLE BUT NO GUARANTEE IS GIVEN THAT ALL EXISTING UTILITIES ARE SHOWN OR THAT THE GIVEN LOCATIONS ARE EXACT. CONFIRMATION OF EXISTENCE AND EXACT LOCATION OF ALL SERVICES MUST BE OBTAINED FROM THE INDIVIDUAL UTILITIES BEFORE PROCEEDING WITH CONSTRUCTION.			APPROVED BY	DPK
1	ISSUED WITH ADDENDUM #4	11/04/2009	RBC	
0	ISSUED FOR TENDER	10/13/2009	RCB	
NO.	REVISIONS	DATE	BY	DATE
				2009/06/24

RELEASING FOR CONSTRUCTION	DATE	2009/06/24
----------------------------	------	------------



THE CITY OF WINNIPEG
TRANSIT DEPARTMENT

SOUTHWEST RAPID TRANSIT CORRIDOR - STAGE 1
TRANSITWAY TUNNEL AT CN RIVERS SUBDIVISION
MILEAGE 1.38 & ASSOCIATED WORKS

CITY DRAWING NUMBER: U237-09-49
SHEET 49 OF 73
CONSULTANT DRAWING NUMBER: C4-S1126-T

RETAINING WALL DETAILS SHEET 1 OF 2

CONSULTANT PROJECT NO. 088813

G:\csm\088813\Contract\Contract_1\Current\C4-S1126-P.dwg