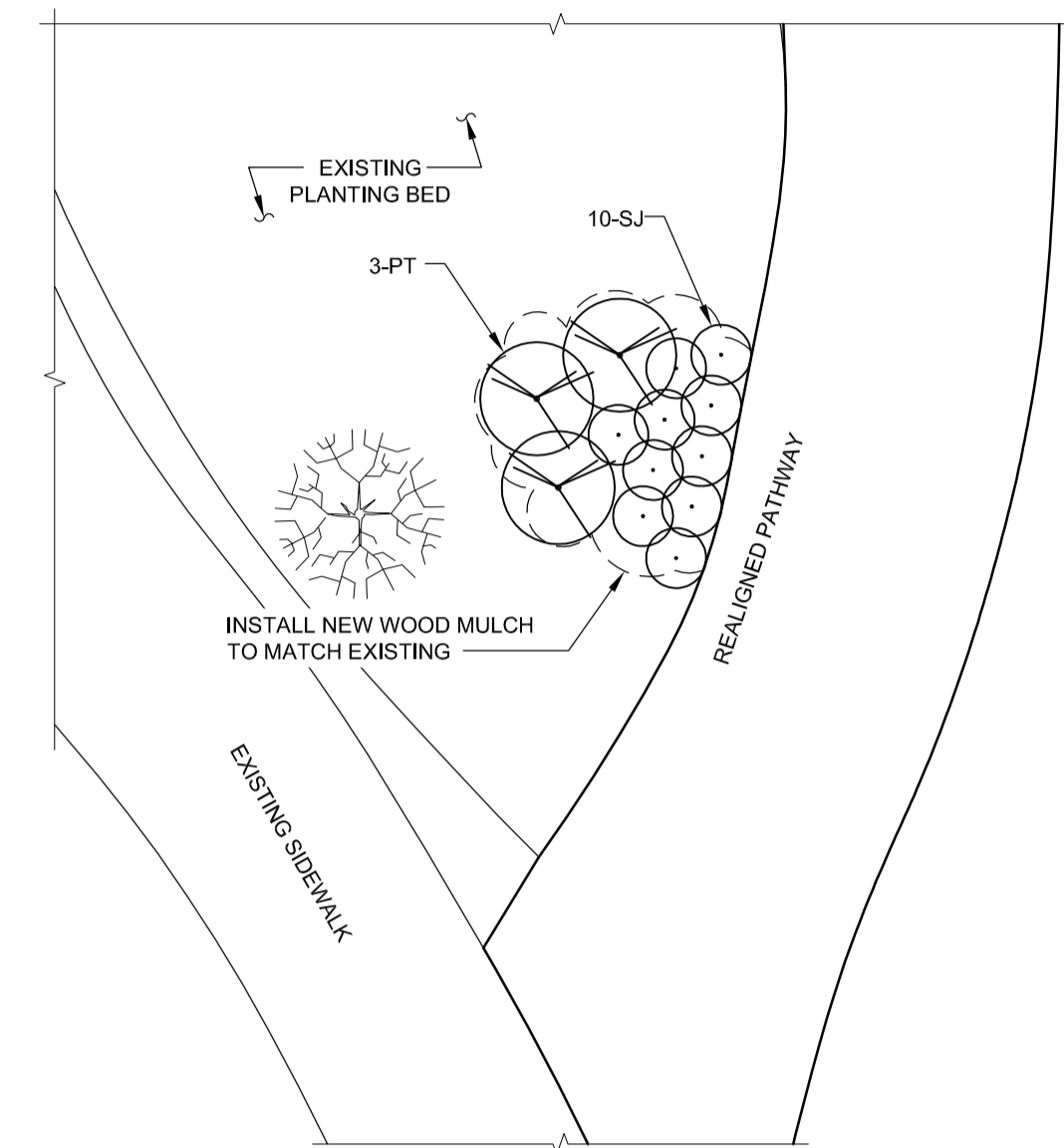


TYPICAL PATH SECTION  
1:50

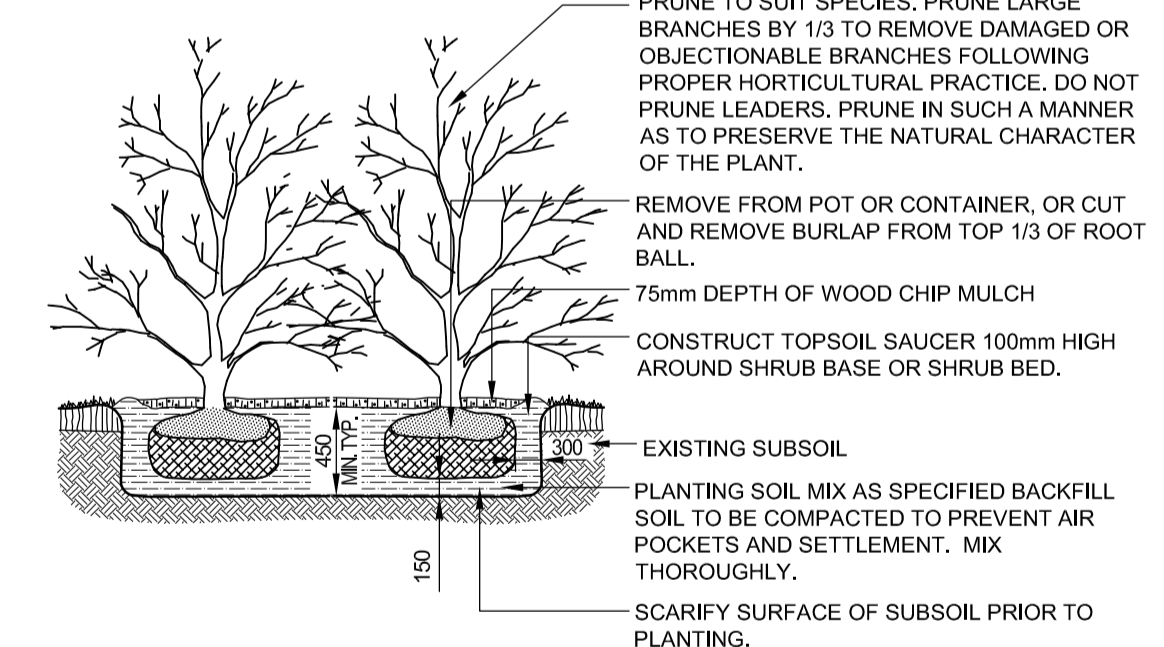


LANDSCAPING DETAIL  
1:100

KEY	QTY	BOTANICAL NAME	COMMON NAME	SIZE
<b>SHRUBS</b>				
PT	3	Prunus tenella	Flowering Almond	600-700 mm Ht.
SJ	10	Spirea japonica 'Golden Princess'	Golden Princess Spirea	300-450 mm Ht.

**LANDSCAPE NOTES:**

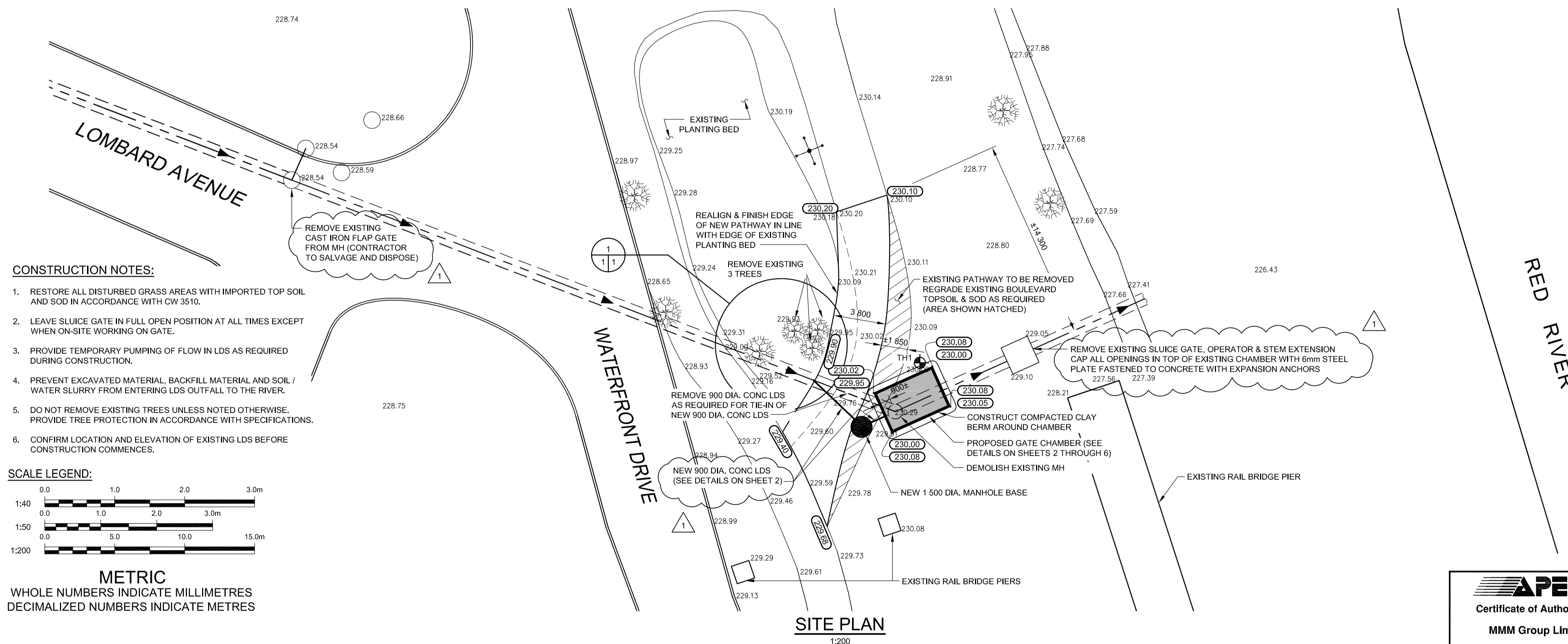
- SUPPLY AND PLACE CLEAN FILL AS INDICATED IN THE PLANTING DETAIL (APPROX. AREA 11 sq.m.)
- SUPPLY AND PLACE WOOD MULCH TO MATCH EXISTING SHALL BE PLACED AROUND NEW SHRUBS (APPROX. AREA 11 sq.m.)
- CONTRACTOR SHALL MAINTAIN AND WARRANTY ALL LANDSCAPING FOR A MINIMUM PERIOD OF 2 (TWO) YEARS FROM THE DATE OF CONSTRUCTION COMPLETION.



SHRUB PLANTING  
NTS

**PLANTING NOTES:**

- APPLY ANTI-DESSICANT PRIOR TO DELIVERY.
- PLANT TREE NO HIGHER THAN 50mm ABOVE ORIGINAL GROUND GRADE TO ALLOW FOR SETTLEMENT.
- WATER AT TIME OF PLANTING AND WHENEVER DEEMED NECESSARY TO MAINTAIN TREES IN A HEALTHY CONDITION.
- ALL TAGS AND LABELS TO REMAIN UNTIL INSPECTION IS COMPLETED.
- CONTRACTOR TO REMOVE ALL TAGS, LABELS AND STAKES AT THE END OF ONE YEAR.



SITE PLAN  
1:200



EXISTING	LEGEND-PLAN	PROPOSED	EXISTING	LEGEND-PLAN	PROPOSED	EXISTING	LEGEND-PROFILE	PROPOSED
	WATERMAIN			UTILITIES ADJUSTED			BARRIER CURB	
	HYDRANT			GAS			ELEVATION	
	VALVE			M.T.S.			SIDEWALK	
	LAND DRAINAGE SEWER			PROPERTY LINE				
	WASTE WATER SEWER							
	MANHOLE							
	CATCH BASIN							

**LOCATIONS APPROVED**

SIGNED BY:	DATE:

LOCATION OF UNDERGROUND STRUCTURES AS SHOWN ARE BASED ON THE BEST INFORMATION AVAILABLE BUT NO GUARANTEE IS GIVEN THAT ALL EXISTING UTILITIES ARE SHOWN OR THAT THE GIVEN LOCATIONS ARE EXACT CONFIRMATION OF EXISTENCE AND EXACT LOCATION OF ALL SERVICES MUST BE OBTAINED FROM THE INDIVIDUAL UTILITIES BEFORE PROCEEDING

No.	REVISIONS	DATE	BY
1	LDS CONNECTION DETAIL	09.10.01	GK
0	ISSUED FOR TENDER	-	GK

DESIGNED BY	CHECKED BY
GK	GK
DRAWN BY	APPROVED BY
CDP	JPL
HOR. SCALE	RELEASED FOR CONSTRUCTION
1:200 U.N.O.	K. ZUREK, P. ENG.
VERT. SCALE	ORIGINAL SIGNED BY
1:40 U.N.O.	

ENGINEER'S SEAL
ORIGINAL SIGNED AND SEALED BY: G. M. KING, P. ENG. DATED: 2009-09-18

**THE CITY OF WINNIPEG**  
WASTE AND WATER DEPARTMENT

Winnipeg

**OUTFALL GATE CHAMBER CONSTRUCTION**  
**LOMBARD AVE. & WATERFRONT DR.**  
**LDS OUTFALL GATE CHAMBER**

CONSULTANT DRAWING No.: 5509090-S1  
SHEET 1 OF 6  
CITY DRAWING No.: LD-5438

BID OPPORTUNITY: 632-2009  
PLOT DATE: 09.37.01