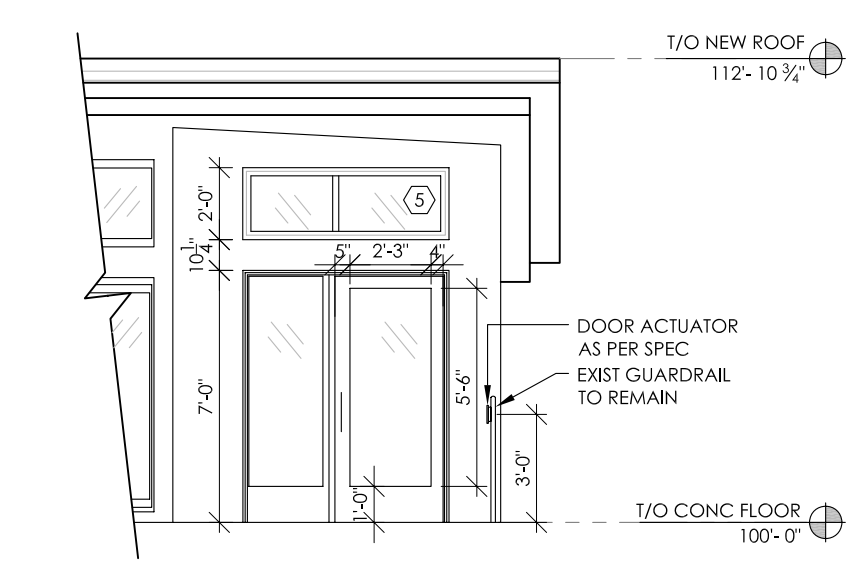
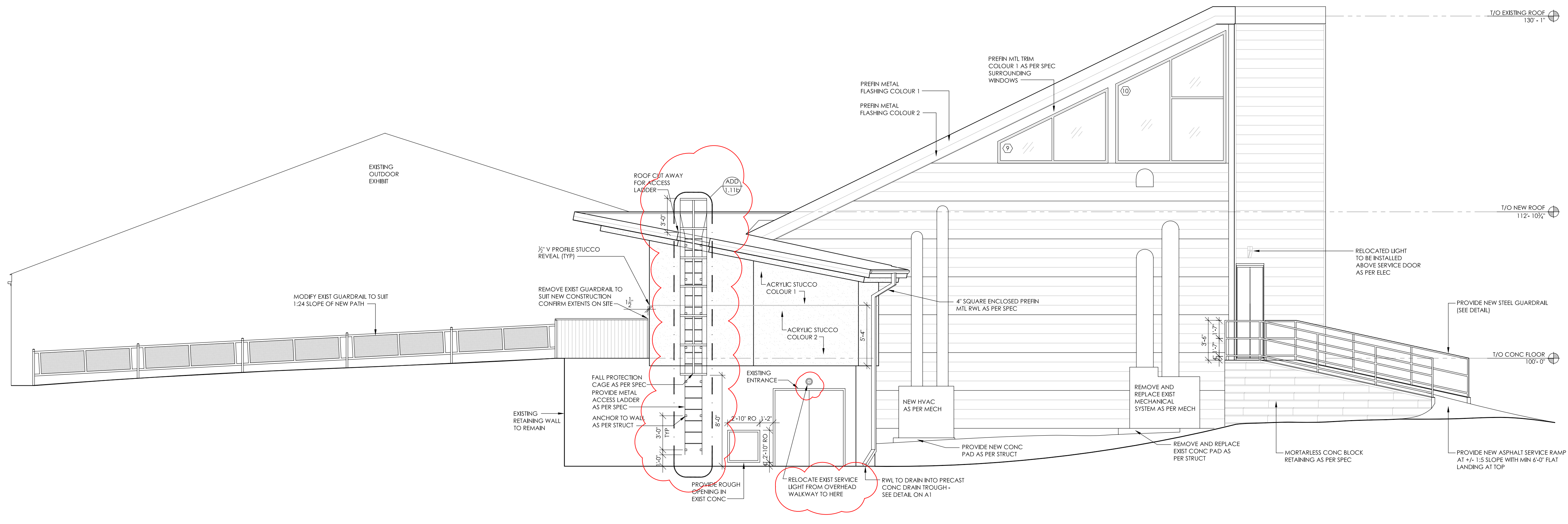


1 SOUTH ELEVATION
3/16" = 1'-0"



2 NORTHEAST ACCESSIBLE ENTRANCE
3/16" = 1'-0"



3 EAST ELEVATION
3/16" = 1'-0"

This drawing is property of the Architect and cannot be reproduced or used without the consent of the Architect. The contractor is responsible for checking and verifying all dimensions and for the accuracy of the record drawings. No liability is accepted for any errors or omissions in the drawings or for any damage or loss of any kind resulting from the use of these drawings.