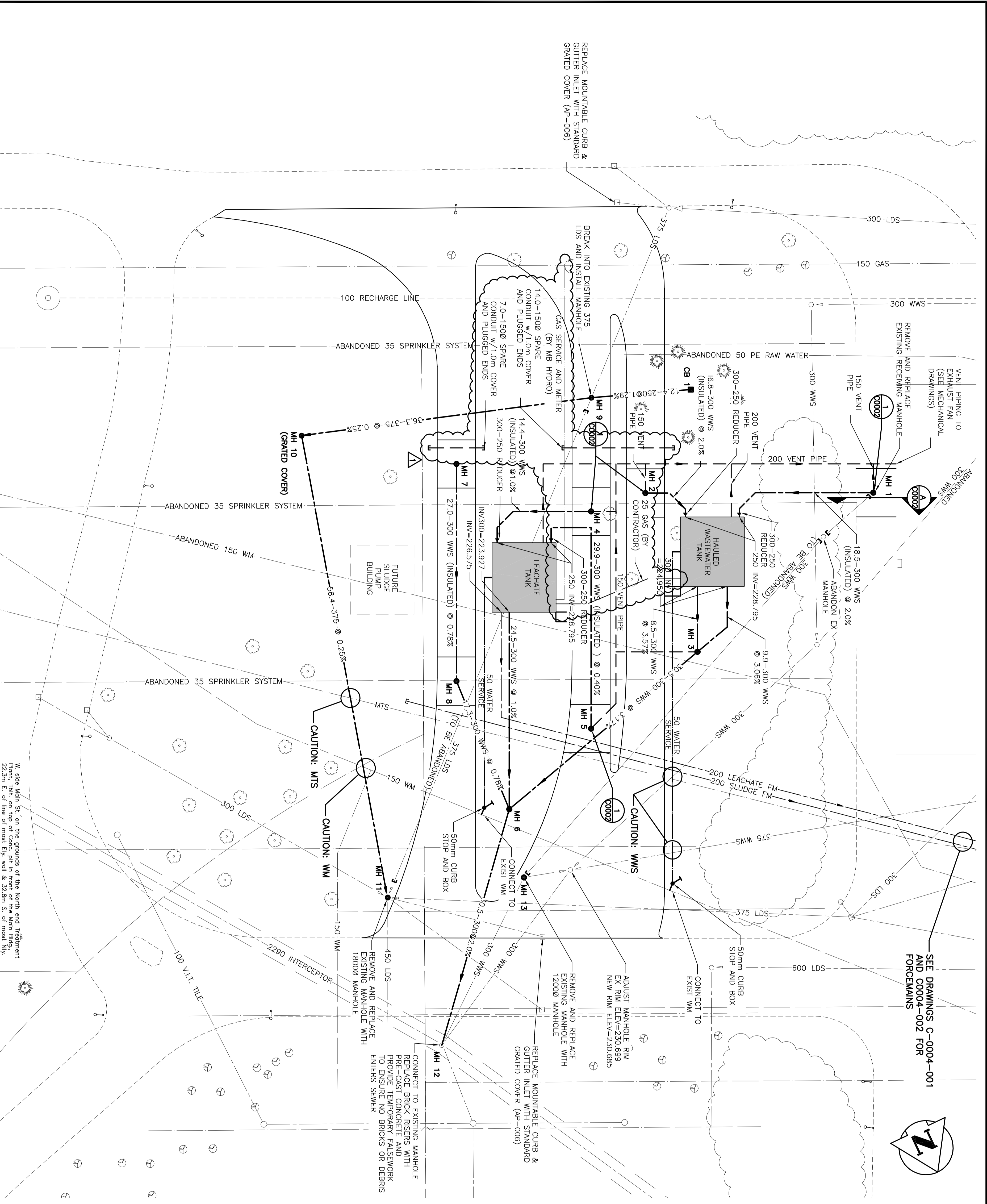
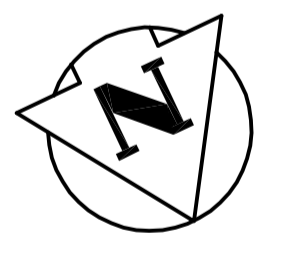


METRIC
 WHOLE NUMBERS INDICATE MILLIMETRES
 DECIMALIZED NUMBERS INDICATE METRES

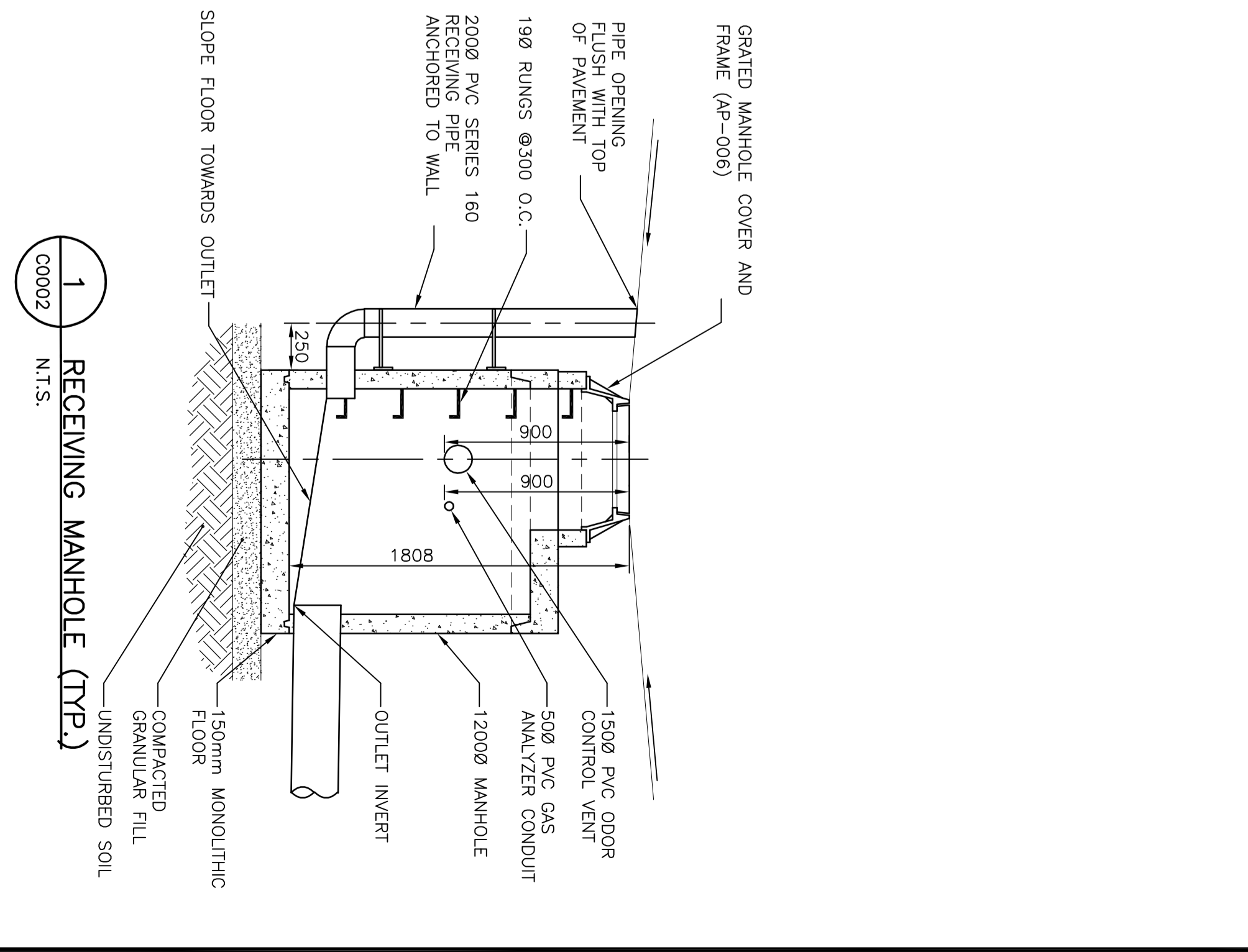


SEE DRAWINGS C-0004-001
 AND C004-002 FOR
 FORCEMAINS



MANHOLE DATA						
MH#	TYPE	COVER	RIM ELEV.	INVERT	NORTHING	EASTING
MH1	RECEIVING	AP-006	230.888	300E=229.165	5534857.2	635727.8
MH2	RECEIVING	AP-006	230.660	300W=-228.931	5534845.0	635763.4
MH3	SD-010	AP-004	230.900	300S;E&W=-224.647	5534855.6	635766.0
MH4	RECEIVING	AP-006	230.640	300E=-228.931	5534844.2	635770.4
MH5	RECEIVING	AP-006	230.430	300S;W&N=-223.915	5534868.6	635782.1
MH6	SD-010	AP-004	231.000	300E=-228.617	5534873.2	635795.5
MH7	SD-010	AP-006	230.770	300N=-228.962	5534831.7	635783.0
MH8	SD-010	AP-006	230.560	300N&S=-228.752	5534856.0	635794.6
MH9	SD-010	AP-004	230.800	EX 375S=228.614	5534831.5	635764.3
MH10	SD-010	AP-006	230.200	375W&N=-228.519	5534820.2	635798.9
MH11	SD-010	AP-004	231.100	EX 375S=-228.260	5534820.2	635798.9
MH12	SD-010	AP-004	EX RIM=230.730	EX 300E=-27.700		
MH13	SD-010	AP-004	230.793	EX 300S=-223.070	5534876.7	635813.9

CATCHBASIN DATA			
CB#	RIM ELEV.	INVERT	INVERT
CB1	230.400	250E=-228.770	5534835.9
		BIM ELEV=228.000	635752.8



- NOTES:**
- UNDERGROUND VENT PIPING TO BE INSTALLED WITH MINIMUM 1 METRE COVER BELOW FINISHED GRADE AND WITH POSITIVE DRAINAGE TO MANHOLES.
 - EXISTING WATERMAIN TO BE LOCATED BY HAND EXCAVATION DURING INSTALLATION OF 300 WWS.

EXISTING	LEGEND-PLAN	PROPOSED	LEGEND-PLAN
150 WM	WATERMAIN	150 WM	M.T.S.
300 LWS	HYDRANT VALVE	300 LWS	CONCRETE ASPHALT SIDEWALK
250 WWS	LAND DRAINAGE SEWER	250 WWS	PROPERTY LINE
	WASTE WATER SERVER		SURVEY BAR
	VENT PIPING		DITCH
	MANHOLE		ELEVATION
	CATCHBASIN		
	GAS		
	HYDRO		

LOCATION APPROVED UNDERGROUND STRUCTURES

NOTE: Location of underground structures as shown on this drawing is for information only. It is the responsibility of the contractor to verify the location of existing and exact location of the structures before proceeding with construction.

NO.	REVISIONS	DATE	BY
A	ISSUED FOR TENDER	10.02.16	H.A.K.

Stanlec Consulting Ltd.
 905 Waverley Street, Winnipeg, Manitoba
 Tel: 204-489-5800 Fax: 204-453-9012

DESIGNED BY: B.J.R.
 DRAWN BY: W.R.A.

CHECKED BY: H.A.K.
 APPROVED BY: B.J.R.

HR. SCALE: 1:250
 VERTICAL: REFERENCED FOR CONSTRUCTION

ENGINEER'S SEAL

ORIGINAL
 B.J. RANSOM
 P. ENG.
 10.02.16

THE CITY OF WINNIPEG
 WATER AND WASTE DEPARTMENT

Winnipeg
 NORTH END WATER POLLUTION CONTROL CENTRE
 HAULED LIQUID WASTE RECEIVING FACILITIES

UNDERGROUND SERVICES

BID OPPORTUNITY NO. 822-2009

CITY DRAWING NUMBER 1-0101A-C0002-001

SHEET 1 OF 1