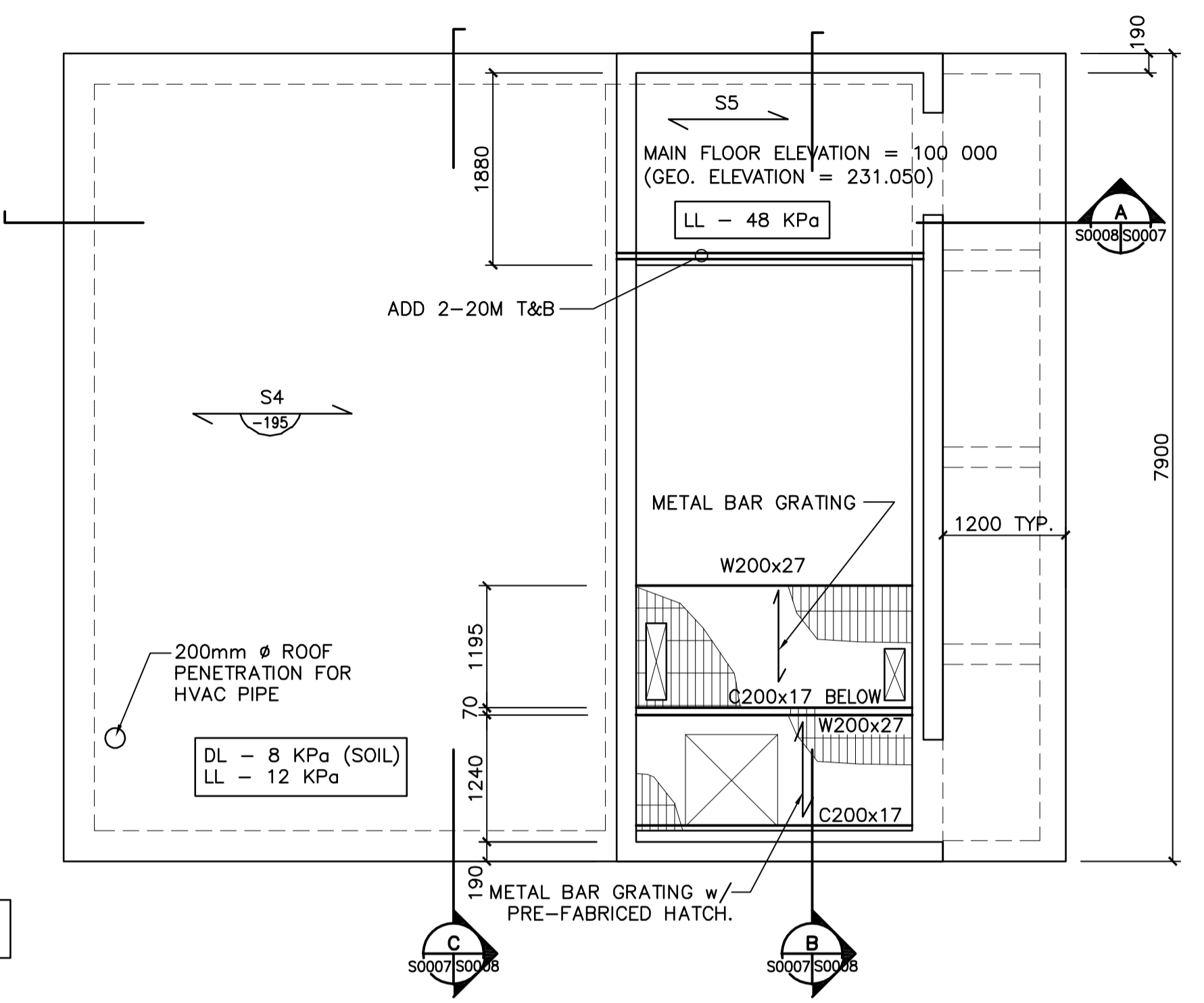
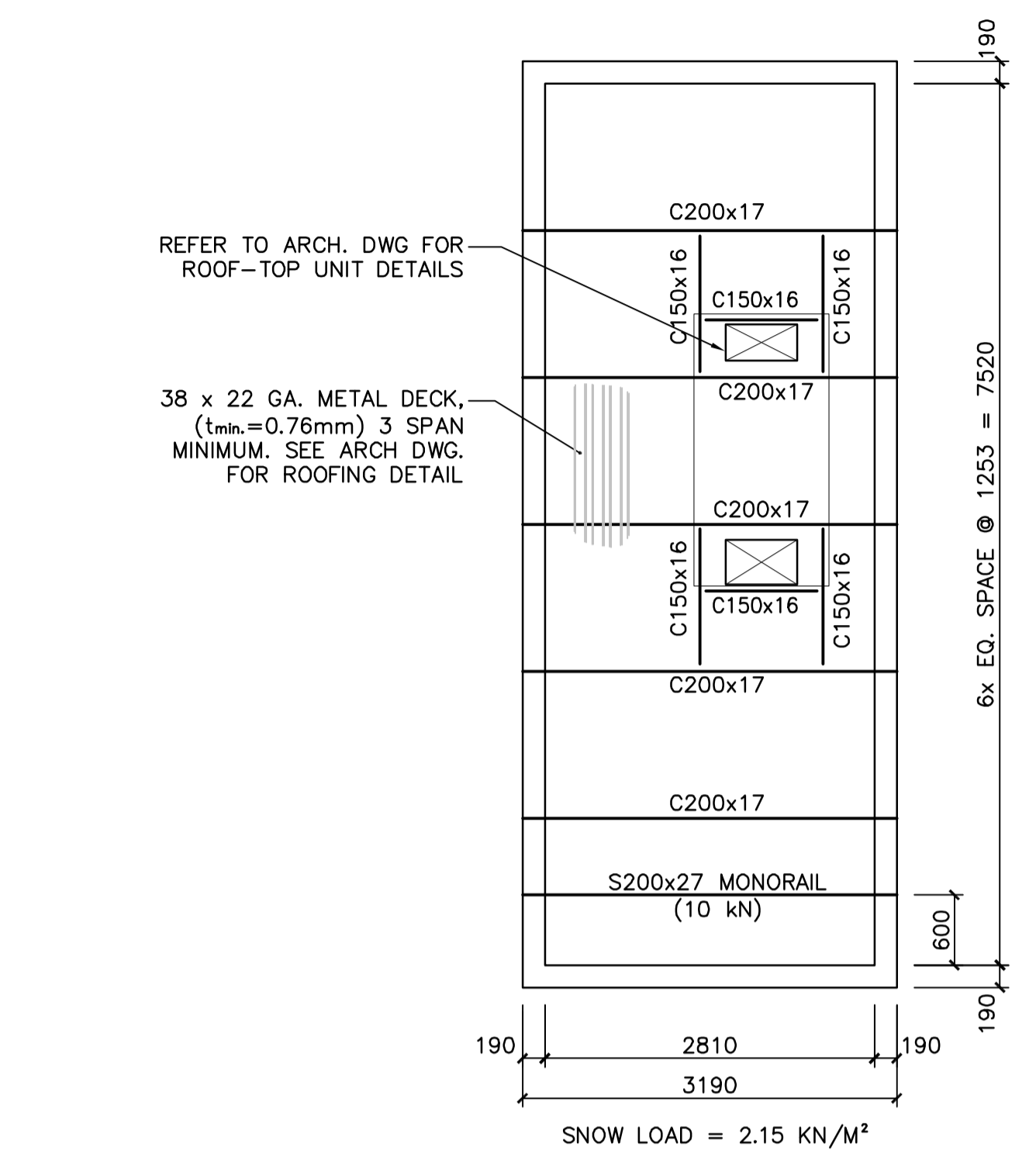


1 LEVEL 2 - BELOW GRADE
S0007/S0007 1:50

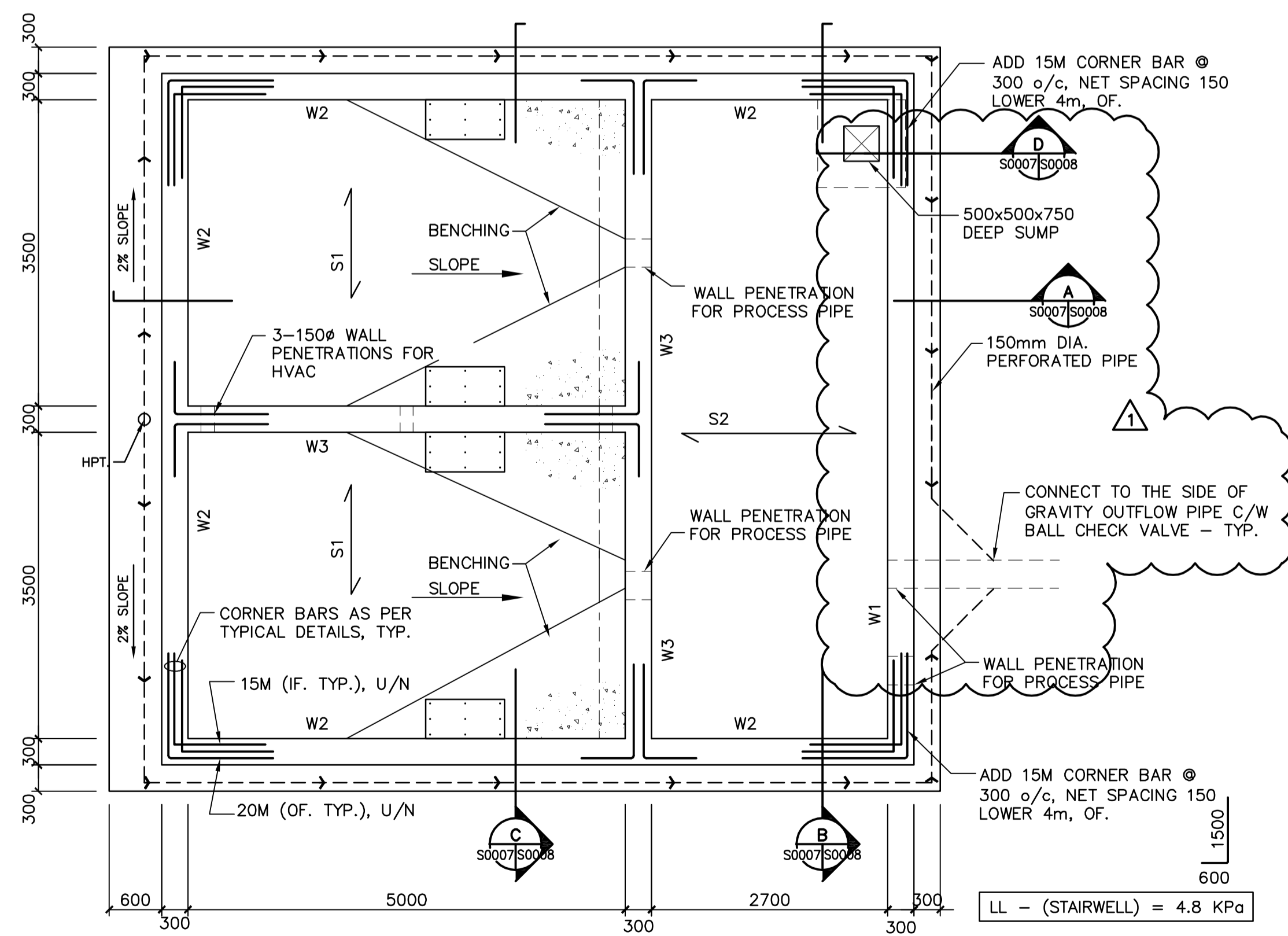
NOTE:
REFER TO PROCESS/MECHANICAL DRAWINGS FOR PIPE PENETRATION TYPE - CORE DRILLED OR EMBEDDED FLANGE TYPES. PROVIDE ADDITIONAL REBAR AROUND PIPE PENETRATION AS SHOWN ON TYPICAL DETAIL DRAWING. FOR CORE DRILLED TYPE, MARK CENTER OF PIPE PENETRATION ON THE INSIDE FACE OF WALL. CO-ORDINATE PIPE LOCATION SO THAT NO REBAR IS CUT DURING CORE DRILL.



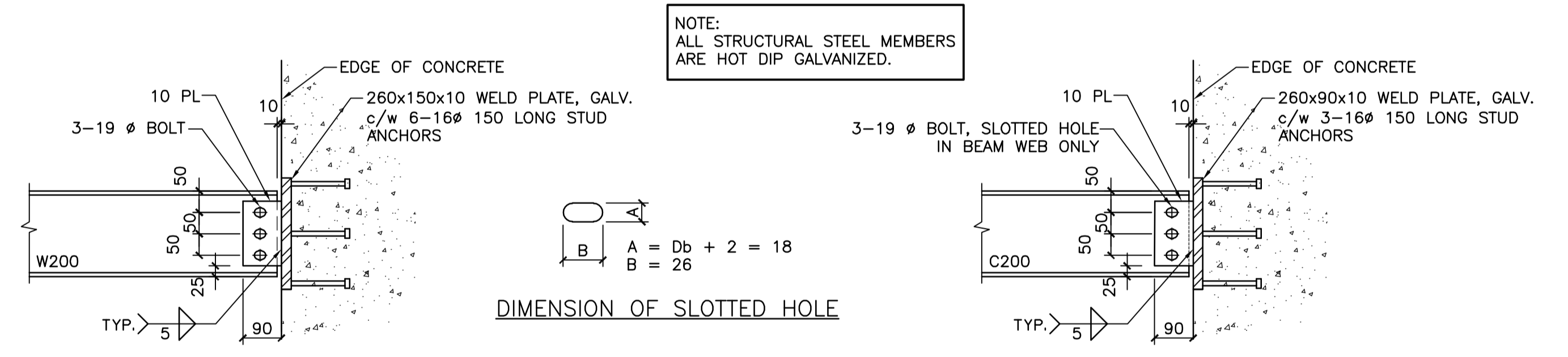
2 LEVEL 1 - GRADE
S0007/S0007 1:50



3 ROOF PLAN
S0007/S0007 1:50



4 FOUNDATION PLAN
S0007/S0007 1:50



5 SECTION DETAIL - STEEL BEAM CONNECTION
S0007/S0007 1:10

METRIC
WHOLE NUMBERS INDICATE MILLIMETRES
DECIMALIZED NUMBERS INDICATE METRES

APECM
Certificate of Authorization
Stantec Consulting Ltd.
No. 1301 Date: _____

LOCATION APPROVED UNDERGROUND STRUCTURES

SUPV. U/G STRUCTURES DATE COMMITTEE _____

NOTE:
LOCATION OF UNDERGROUND STRUCTURES AS SHOWN ARE BASED ON THE BEST INFORMATION AVAILABLE BUT NO GUARANTEE IS GIVEN THAT ALL EXISTING UTILITIES ARE SHOWN OR THAT THE GIVEN LOCATIONS ARE EXACT. CONFIRMATION OF EXISTENCE AND EXACT LOCATION OF ALL SERVICES MUST BE OBTAINED FROM THE INDIVIDUAL UTILITIES BEFORE PROCEEDING WITH CONSTRUCTION.

B.M. ELEV.	
1	ADDENDUM #3 - WEEPIING TILE 10.03.19
A	ISSUED FOR TENDER 10.02.16 WO
NO.	REVISIONS DATE BY

Stantec Consulting Ltd.
905 Waverley Street, Winnipeg, Manitoba
Tel 204-489-5900 Fax 204-453-9012

DESIGNED BY: M.H. CHECKED BY: T.D.
DRAWN BY: W.O. APPROVED BY: M.H.

HOR. SCALE: AS NOTED
VERTICAL: _____

RELEASSED FOR CONSTRUCTION: _____

ENGINEER'S SEAL

ORIGINALLY SEALED BY: _____

MOHAMMAD HOQUE
OCT. 9, 2009

THE CITY OF WINNIPEG
WATER AND WASTE DEPARTMENT

Winnipeg

**NORTH END WATER POLLUTION CONTROL FACILITIES
HAULED WASTEWATER RECEIVING FACILITIES
LEACHATE RECEIVING BUILDING
FOUNDATION, FLOOR AND ROOF PLAN**

BID OPPORTUNITY NO. 822-2009

CITY DRAWING NUMBER 1-0101A-S0007-001

SHEET 3 OF 4