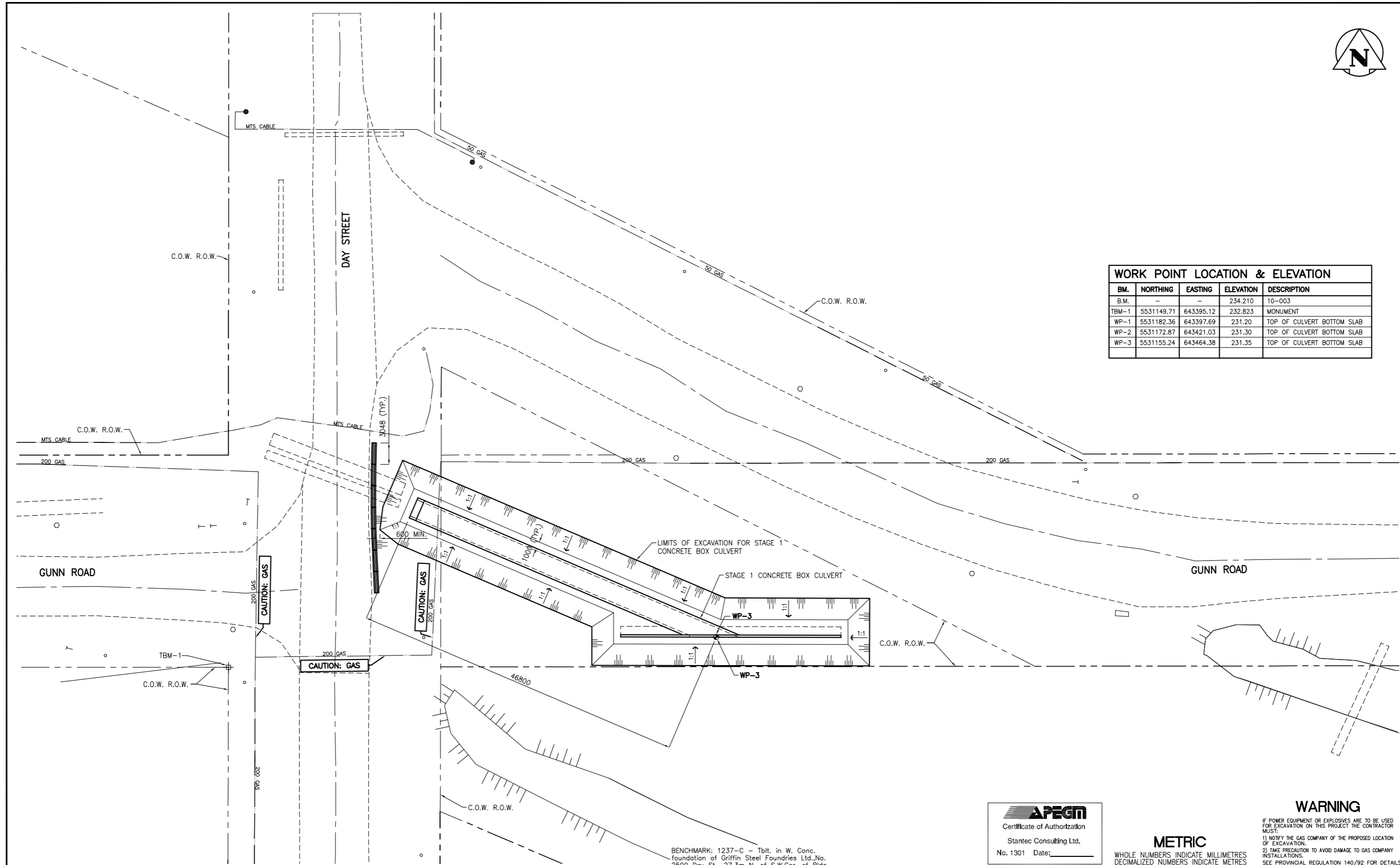




WORK POINT LOCATION & ELEVATION				
BM.	NORTHING	EASTING	ELEVATION	DESCRIPTION
B.M.	-	-	234.210	10-003
TBM-1	5531149.71	643395.12	232.823	MONUMENT
WP-1	5531182.36	643397.69	231.20	TOP OF CULVERT BOTTOM SLAB
WP-2	5531172.87	643421.03	231.30	TOP OF CULVERT BOTTOM SLAB
WP-3	5531155.24	643464.38	231.35	TOP OF CULVERT BOTTOM SLAB



APEGM
Certificate of Authorization
Stantec Consulting Ltd.
No. 1301 Date: _____

WARNING
IF POWER EQUIPMENT OR EXPLOSIVES ARE TO BE USED FOR EXCAVATION ON THIS PROJECT THE CONTRACTOR MUST:
1) NOTIFY THE GAS COMPANY OF THE PROPOSED LOCATION OF EXCAVATION.
2) TAKE PRECAUTION TO AVOID DAMAGE TO GAS COMPANY INSTALLATIONS.
SEE PROVINCIAL REGULATION 140/92 FOR DETAILS

METRIC
WHOLE NUMBERS INDICATE MILLIMETRES
DECIMALIZED NUMBERS INDICATE METRES

BENCHMARK: 1237-C - Tblt. in W. Conc. foundation of Griffin Steel Foundries Ltd., No. 2500 Day St., 27.3m N. of S.W. Cor. of Bldg.

150 MM	WATERMAIN	150 MM	HYDRO	150 MM	WATERMAIN	150 MM
○	HYDRANT	+	M.T.S.	+	HYDRANT, VALVE	+
○	VALVE	+	CONCRETE	+	LAND DRAINAGE SEWER	+
○	LAND DRAINAGE SEWER	○	ASPHALT	○	WASTE WATER SEWER	○
○	WASTE WATER SEWER	○	SIDEWALK	○	PROPERTY LINE	○
○	MANHOLE	○	SURVEY BAR	○	DITCH	○
○	CATCH BASIN	○	ELEVATION	○	SIDEWALK RAMP	○
○	CURB INLET	○	(31.334)	○		○
○	JUNCTIONS	○	(32.23D)	○		○
○	CULVERT	○		○		○
○	GAS	○		○		○
○	EXISTING	○	LEGEND-PLAN	○	PROPOSED	○
○	LEGEND-PLAN	○	PROPOSED	○	EXISTING	○
○	LEGEND-PROFILE	○	PROPOSED	○	EXISTING	○
○	LEGEND-PROFILE	○	PROPOSED	○	EXISTING	○

LOCATION APPROVED UNDERGROUND STRUCTURES

SUPV. U/G STRUCTURES COMMITTEE DATE

NOTE:
LOCATION OF UNDERGROUND STRUCTURES AS SHOWN ARE BASED ON THE BEST INFORMATION AVAILABLE BUT NO GUARANTEE IS GIVEN THAT ALL EXISTING UTILITIES ARE SHOWN OR THAT THE GIVEN LOCATIONS ARE EXACT. CONTRIBUTION OF EXISTENCE AND EXACT LOCATION OF ALL SERVICES MUST BE OBTAINED FROM THE INDIVIDUAL UTILITIES BEFORE PROCEEDING WITH CONSTRUCTION.

NO.	REVISIONS	DATE	BY
3	ISSUED FOR ADDENDUM No.1	10.01.13	J.M.B.
2	ISSUED FOR TENDER	10.01.06	J.M.B.
1	SUBMITTED FOR 90% REVIEW	09.12.11	J.M.B.

Stantec Consulting Ltd.
905 Waverley Street, Winnipeg, Manitoba
Tel 204-489-5900 Fax 204-453-9012

DESIGNED BY: W.K.B. CHECKED BY: K.S.A.
DRAWN BY: J.M.B. APPROVED BY: W.K.B.

HOR. SCALE: 1:250
VERTICAL: N/A

RELEASED FOR CONSTRUCTION: _____
DATE: 09.12.09

ENGINEER'S SEAL
CONSULTANT DRAWING NO. CT-102

THE CITY OF WINNIPEG
PUBLIC WORKS DEPARTMENT
ENGINEERING DIVISION

GUNN ROAD RECONSTRUCTION
CORDITE DITCH CULVERT REPLACEMENT
AT DAY STREET AND GUNN ROAD
SITE PLAN - PHASE I

SHEET 3 OF 15
CAD FILE DRAWING NUMBER 05170ct-102-726.dwg
CITY DRAWING NUMBER C365-10-03

V:\137\win\13703170\winning\402_address\win\13703170-101-726.dwg
2010-01-13 02:56PM By: jberner