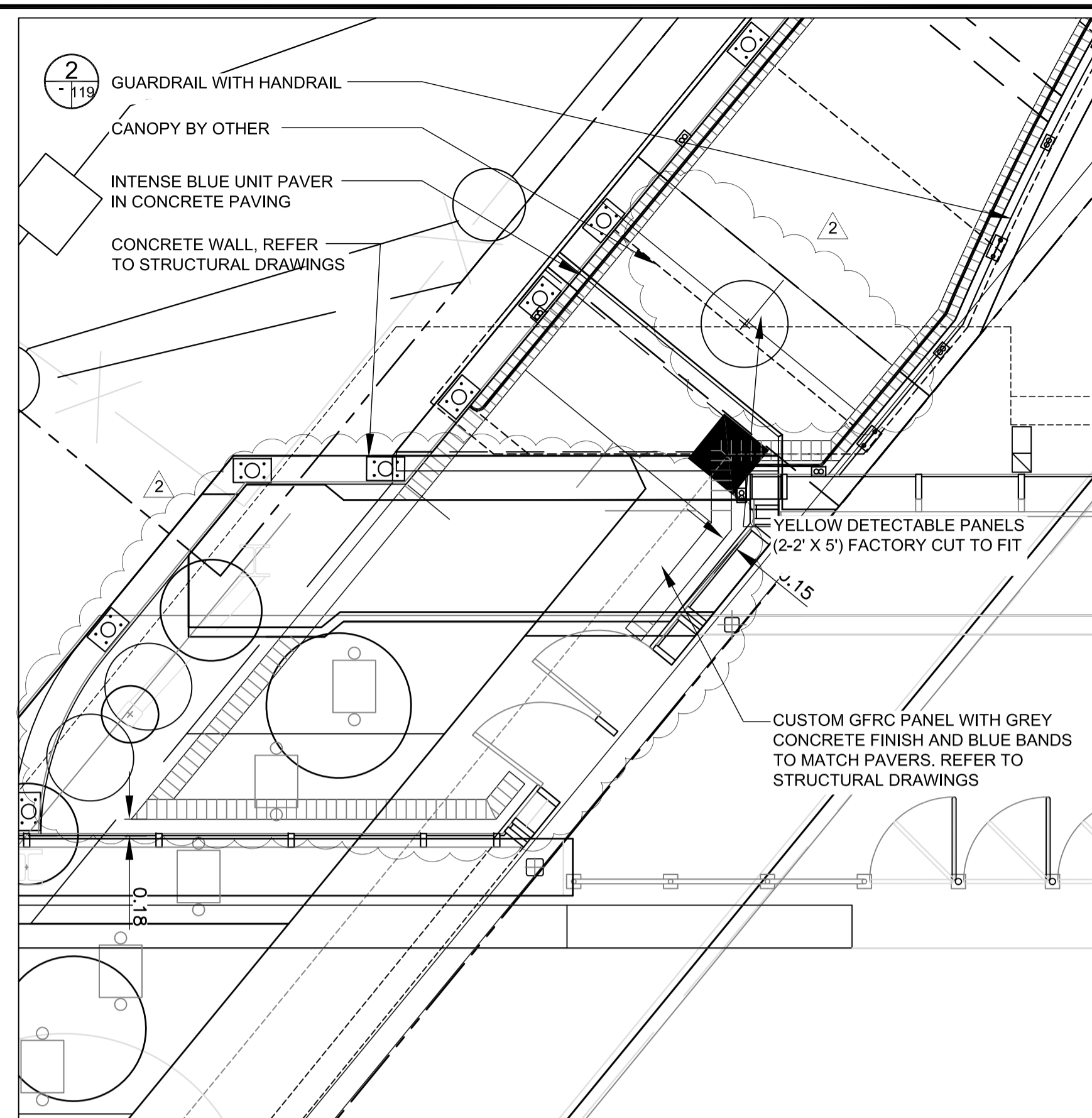
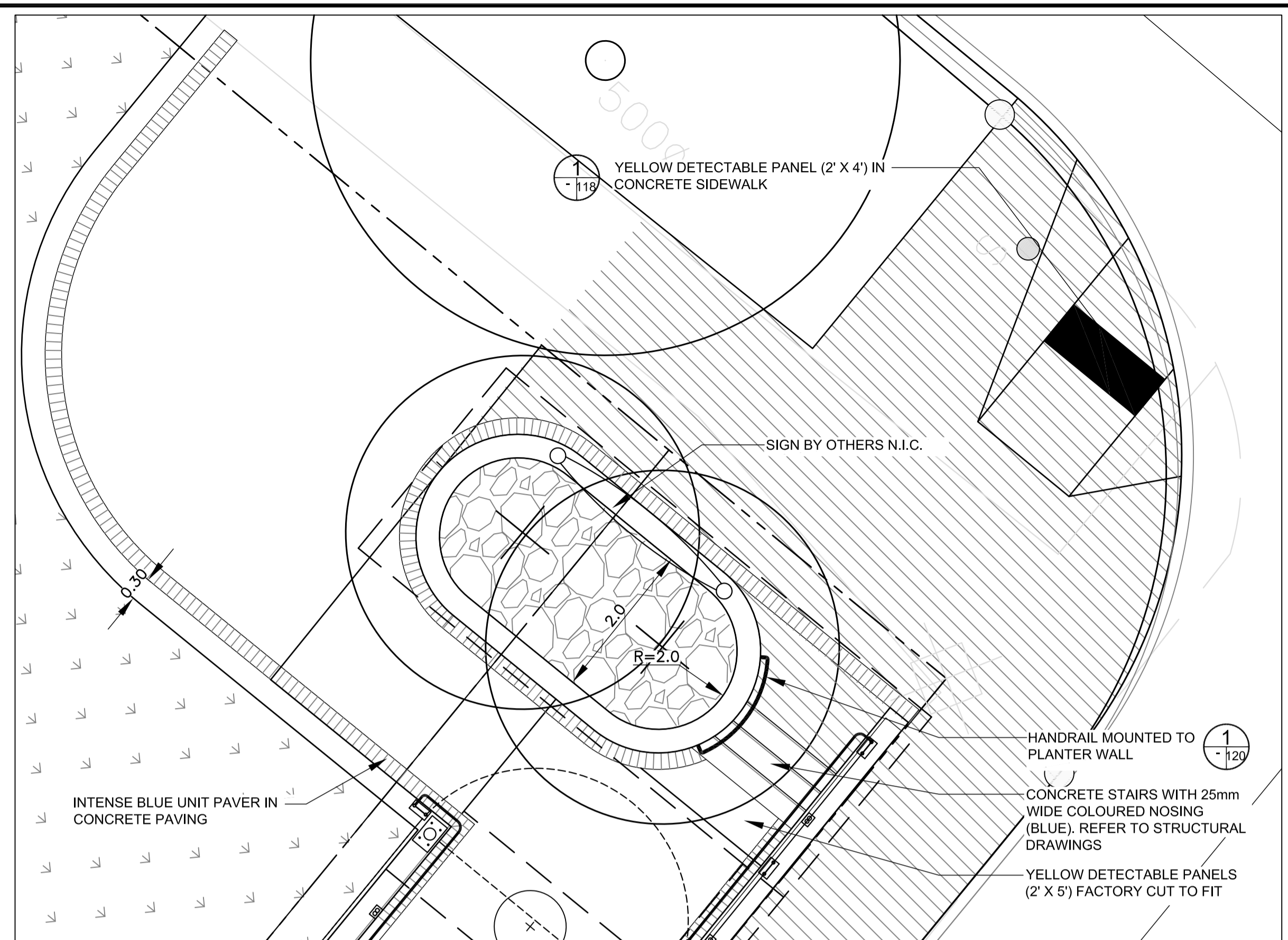


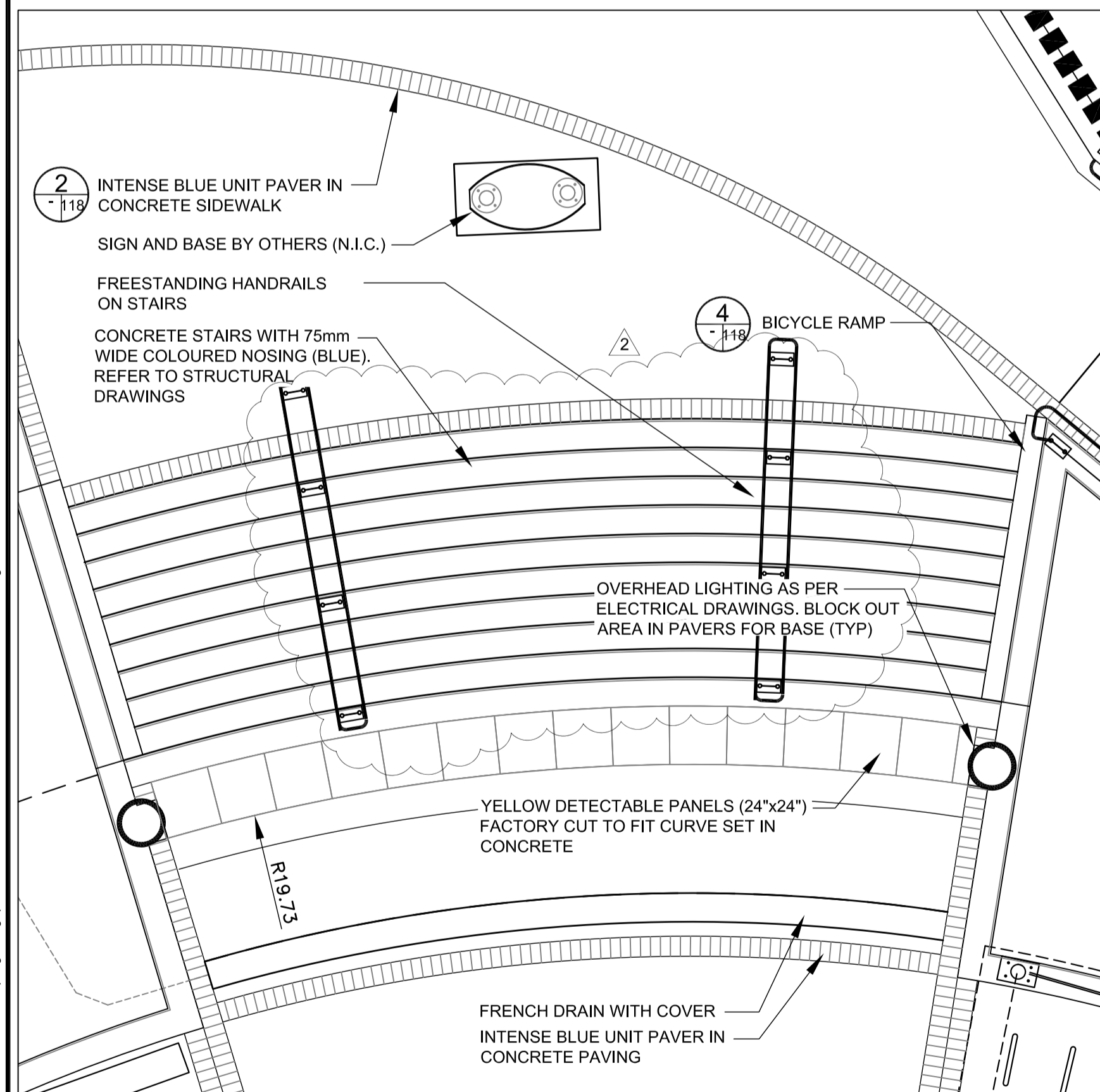
WEST SIDE UPPER PLAZA
SCALE 1:50



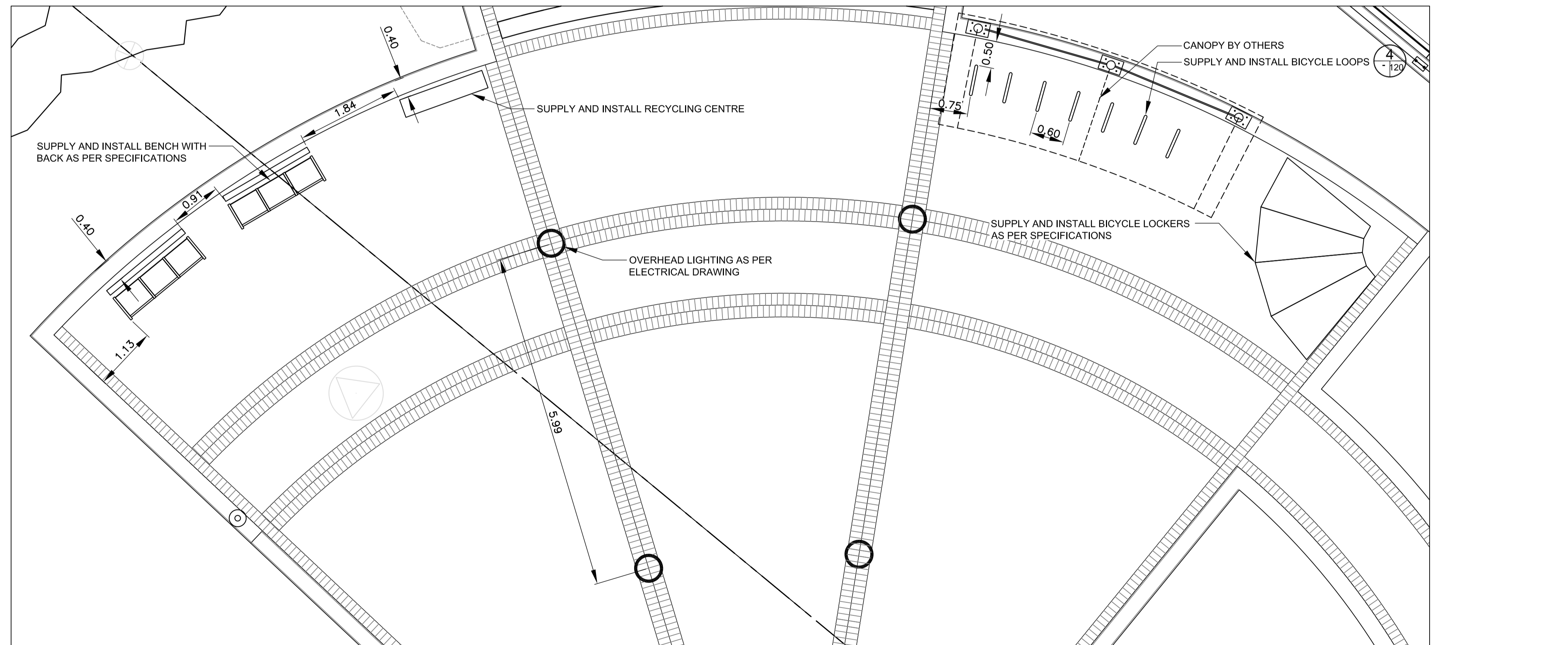
EAST SIDE UPPER PLAZA
SCALE 1:50



EAST SIDE LOWER PLAZA
SCALE 1:50



PAVING PATTERN DETAIL MID PLAZA
SCALE 1:50



SITE FURNITURE LAYOUT MID PLAZA
SCALE 1:50

LEGEND

- NATIVE GRASSES
- MULCH BED
- CONCRETE SIDEWALK
- EXISTING TREES TO REMAIN
- PROPOSED DECIDUOUS TREE
- PROPOSED CONIFEROUS TREE
- EXISTING DECIDUOUS TREE TO BE REMOVED
- EXISTING CONIFEROUS TREE TO BE REMOVED
- PROPOSED SHRUBS

PLANT KEY

QUANTITY

PLANT KEY

LOCATION APPROVED UNDERGROUND STRUCTURES

ORIGINAL SIGNED BY X DATE

SUPV. U/G STRUCTURES COMMITTEE

NOTE: LOCATION OF UNDERGROUND STRUCTURES AS SHOWN ARE BASED ON THE BEST INFORMATION AVAILABLE. BUT NO GUARANTEE IS GIVEN THAT ALL EXISTING UTILITIES ARE SHOWN OR THAT THE GIVEN LOCATIONS ARE EXACT. CONFIRMATION OF EXISTENCE AND EXACT LOCATION OF ALL SERVICES MUST BE OBTAINED FROM THE INDIVIDUAL UTILITIES BEFORE PROCEEDING WITH CONSTRUCTION.

B.M. ELEV.	BM ELEV.	DESIGNED BY	SR/JW
		DRAWN BY	JW/TM
		CHECKED BY	JW/SR
		APPROVED BY	-
		HOR. SCALE	1:100
		VERTICAL	
		DATE	2010-05-07
		NO. REVISIONS	

RELEASED FOR CONSTRUCTION

ORIGINAL SIGNED BY RANDY FINGAS

DATE: 2010/05/14

McGOWAN-RUSSELL

DILLON CONSULTING

LANDSCAPE ARCHITECT'S SEAL

ORIGINAL SIGNED BY JACKIE WILKIE

JACQUELINE L. WILKIE member no. 75

CONSULTANT PROJECT NO. 08-028

THE CITY OF WINNIPEG TRANSIT DEPARTMENT

SOUTHWEST RAPID TRANSIT CORRIDOR - STAGE 1 OSBORNE STATION AND ASSOCIATED WORKS

LANDSCAPE WORKS ENLARGEMENTS

CITY DRAWING NUMBER B237-10-116

SHEET 116 OF 121

CONSULTANT DRAWING NUMBER C5-L-5005-T-R1

X:\08-028_Southwestern_BRT_Corridor\dwg\2010\osborne_station\wkg_dwg\Osborne_LANDSCAPE_PLAN_2010-05-02.dwg