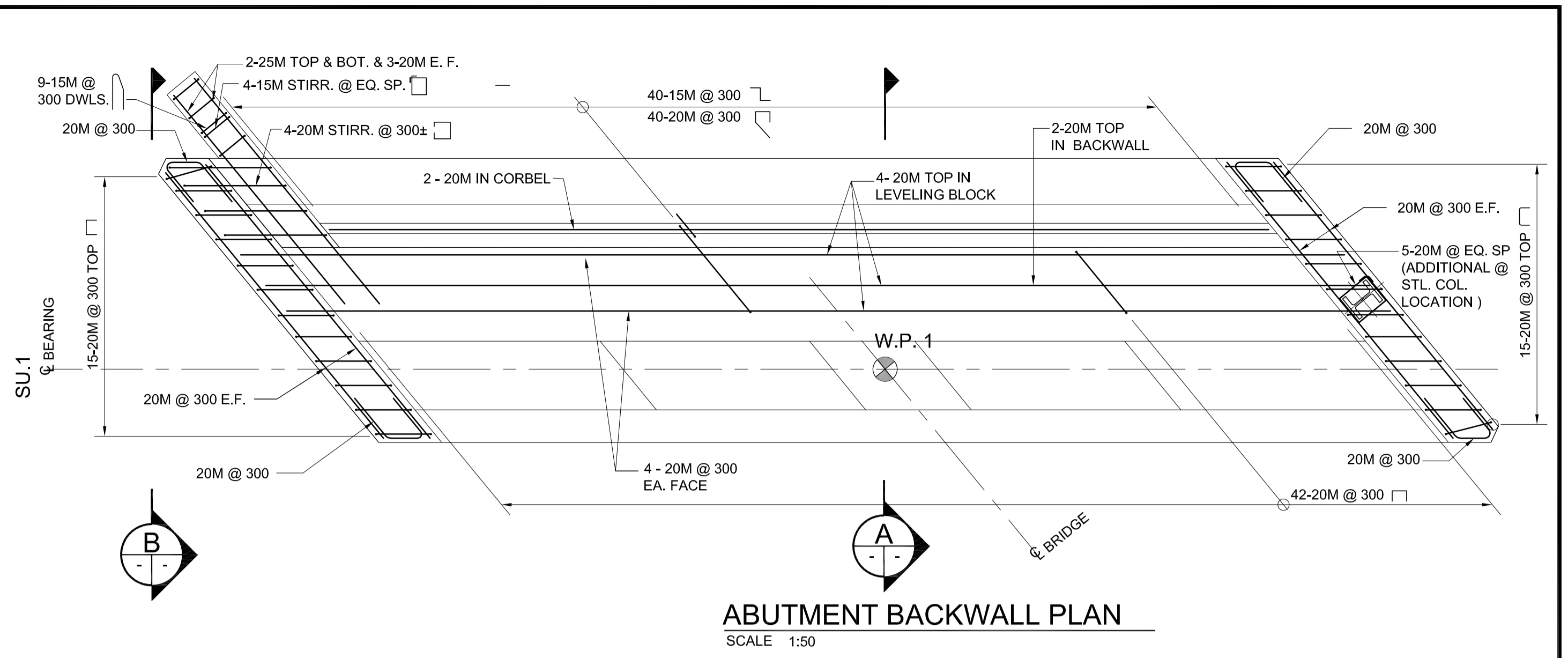
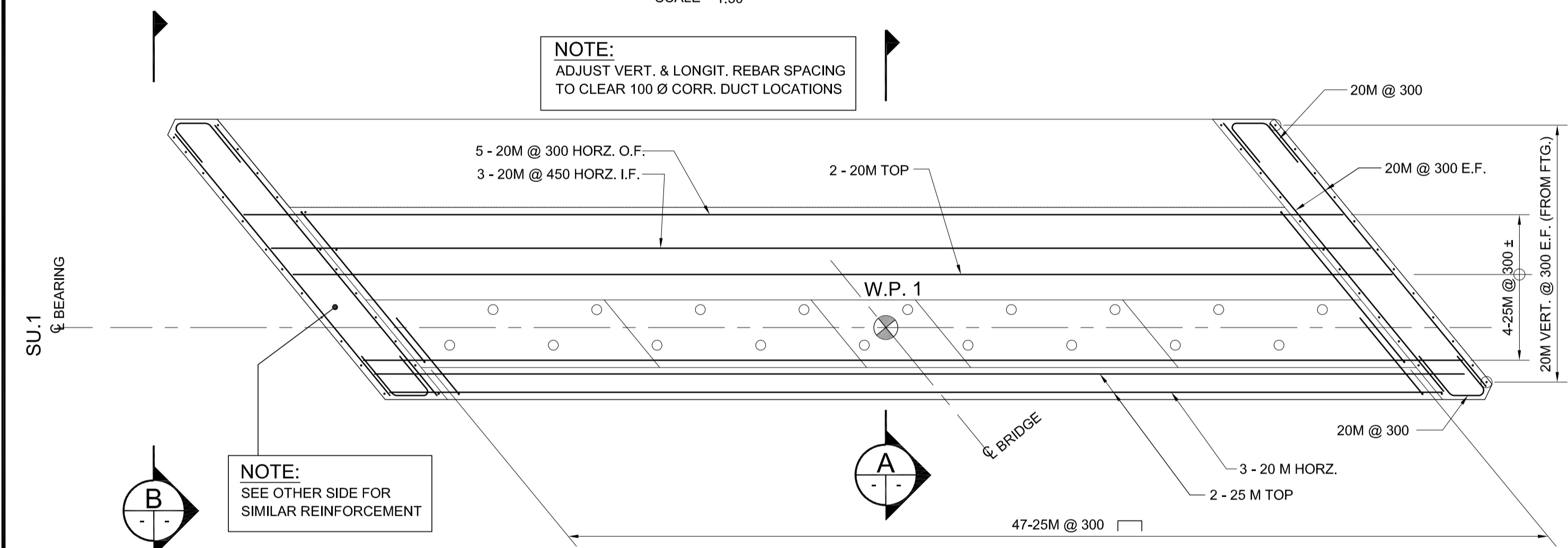


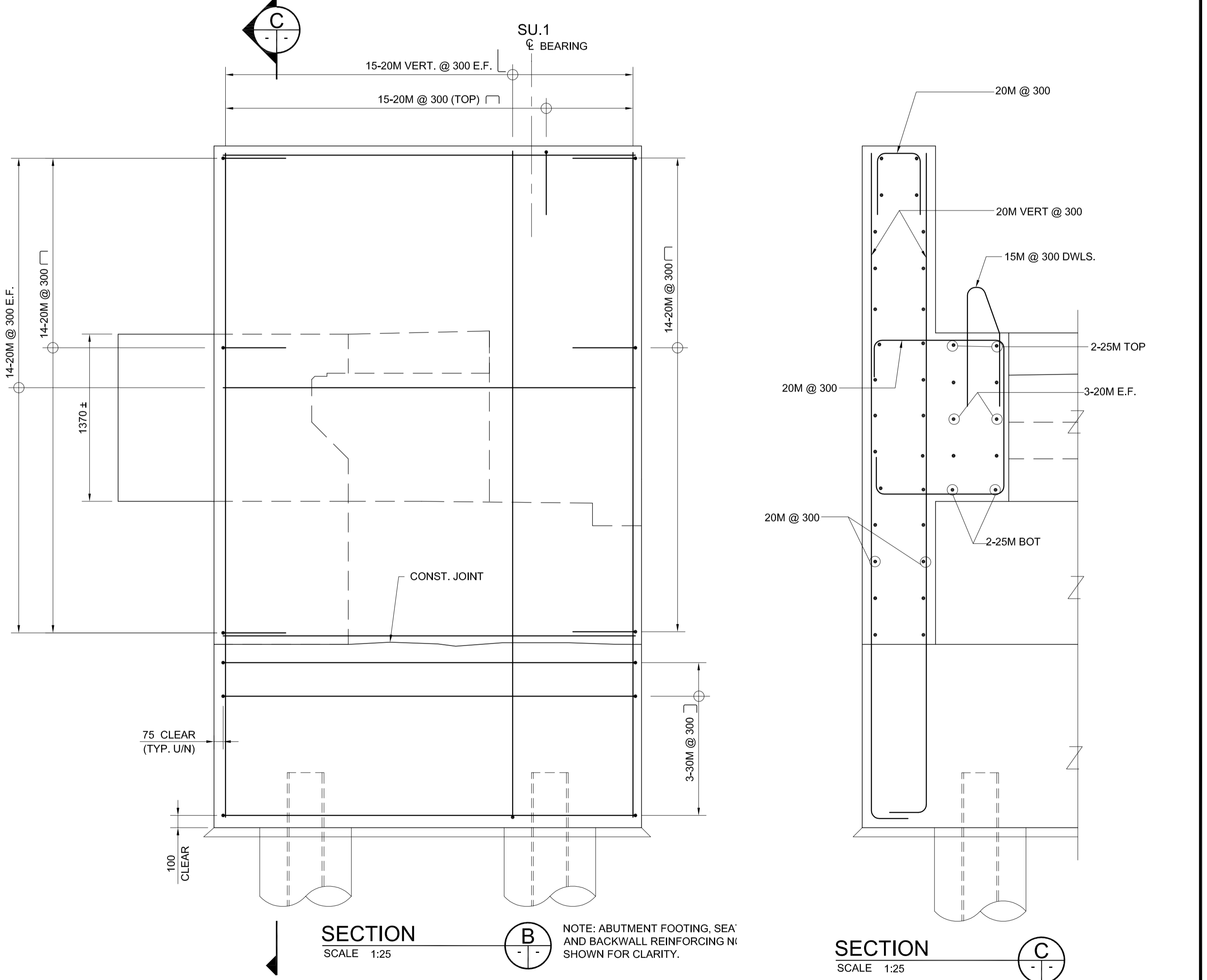
ABUTMENT FOOTING PLAN
SCALE 1:50



ABUTMENT BACKWALL PLAN
SCALE 1:50

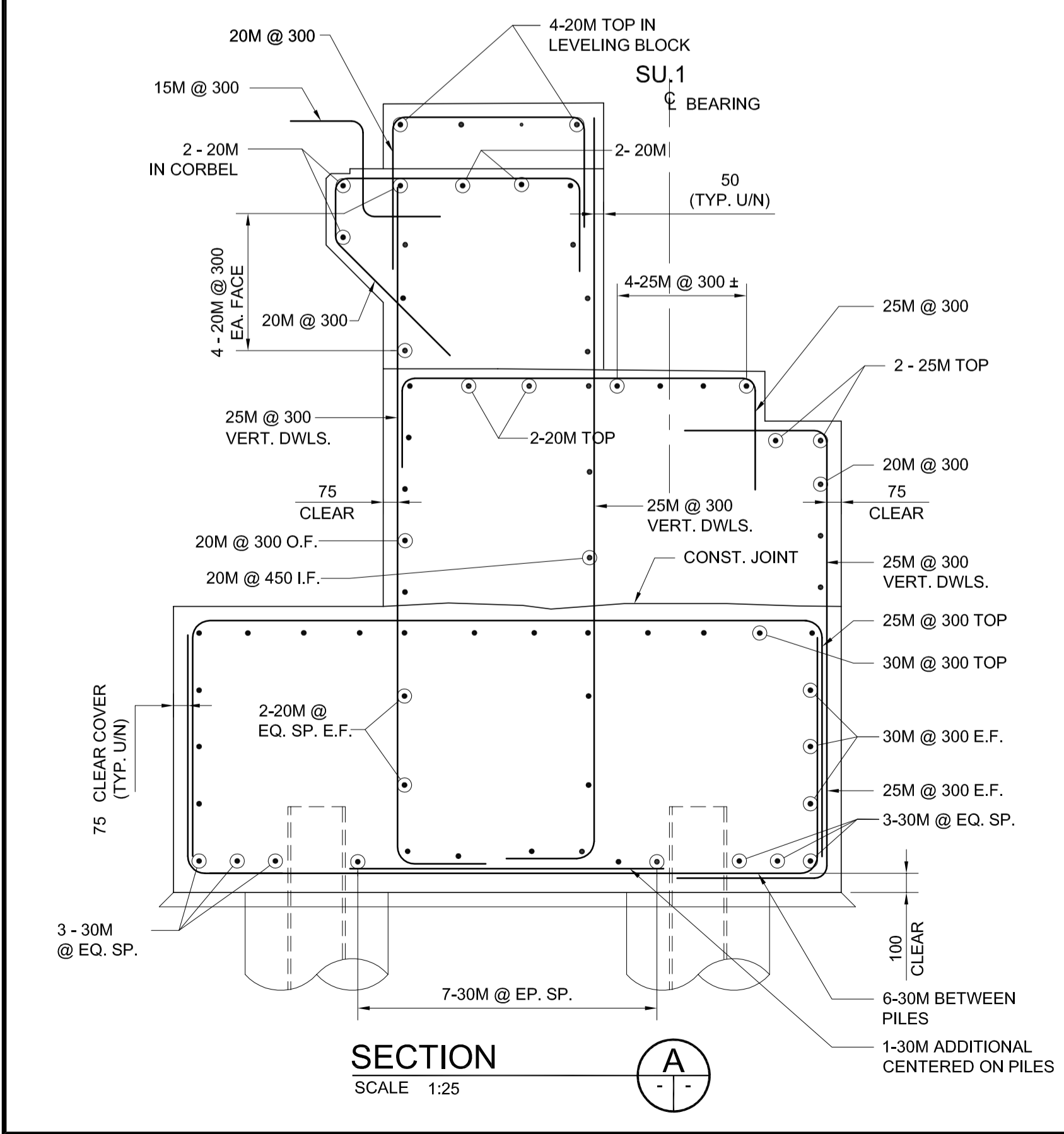


ABUTMENT SEAT PLAN
SCALE 1:50



SECTION B-B
SCALE 1:25

SECTION C-C
SCALE 1:25



SECTION A-A
SCALE 1:25

LOCATION UNDERGROUND STRUCTURES SUPPLY U/G STRUCTURES COMMITTEE DATE	APPROVED DATE	B.M. ELEV. 654265 (633392.694, 5525026.192) 232.518	DESIGNED BY FAK DRAWN BY NBG CHECKED BY SSR APPROVED BY DPK	 RELEASED FOR CONSTRUCTION ORIGINAL SIGNED BY RANDY FINGAS DATE 2010/05/14	 ORIGINAL STAMPED BY S.S. RIHAL 2010/05/14 CONSULTANT PROJECT NO. 088813	 SOUTHWEST RAPID TRANSIT CORRIDOR - STAGE 1 OSBORNE STATION & ASSOCIATED WORKS WEST ABUTMENT SU-1 REINFORCEMENT	CITY DRAWING NUMBER B237-10-18 SHEET 18 OF 121 CONSULTANT DRAWING NUMBER C5-S1103-T
NOTE: LOCATION OF UNDERGROUND STRUCTURES AS SHOWN ARE BASED ON THE BEST INFORMATION AVAILABLE BUT NO GUARANTEE IS GIVEN THAT ALL EXISTING UTILITIES ARE SHOWN OR THAT THE GIVEN LOCATIONS ARE EXACT. CONFIRMATION OF EXISTENCE AND EXACT LOCATION OF ALL SERVICES MUST BE OBTAINED FROM THE INDIVIDUAL UTILITIES BEFORE PROCEEDING WITH CONSTRUCTION.	2 ISSUED FOR ADDENDUM #2 10/06/11 DPK 1 ISSUED FOR TENDER 10/05/14 DPK	HOR. SCALE AS NOTED VERTICAL 2010/05/14	DATE 2010/05/14				



G:\CAD\088813\Contract\Contract 5-Osborne Station\Current\Bridge\C5-S1103- WEST ABUT SU-1 REINFORCING.dwg