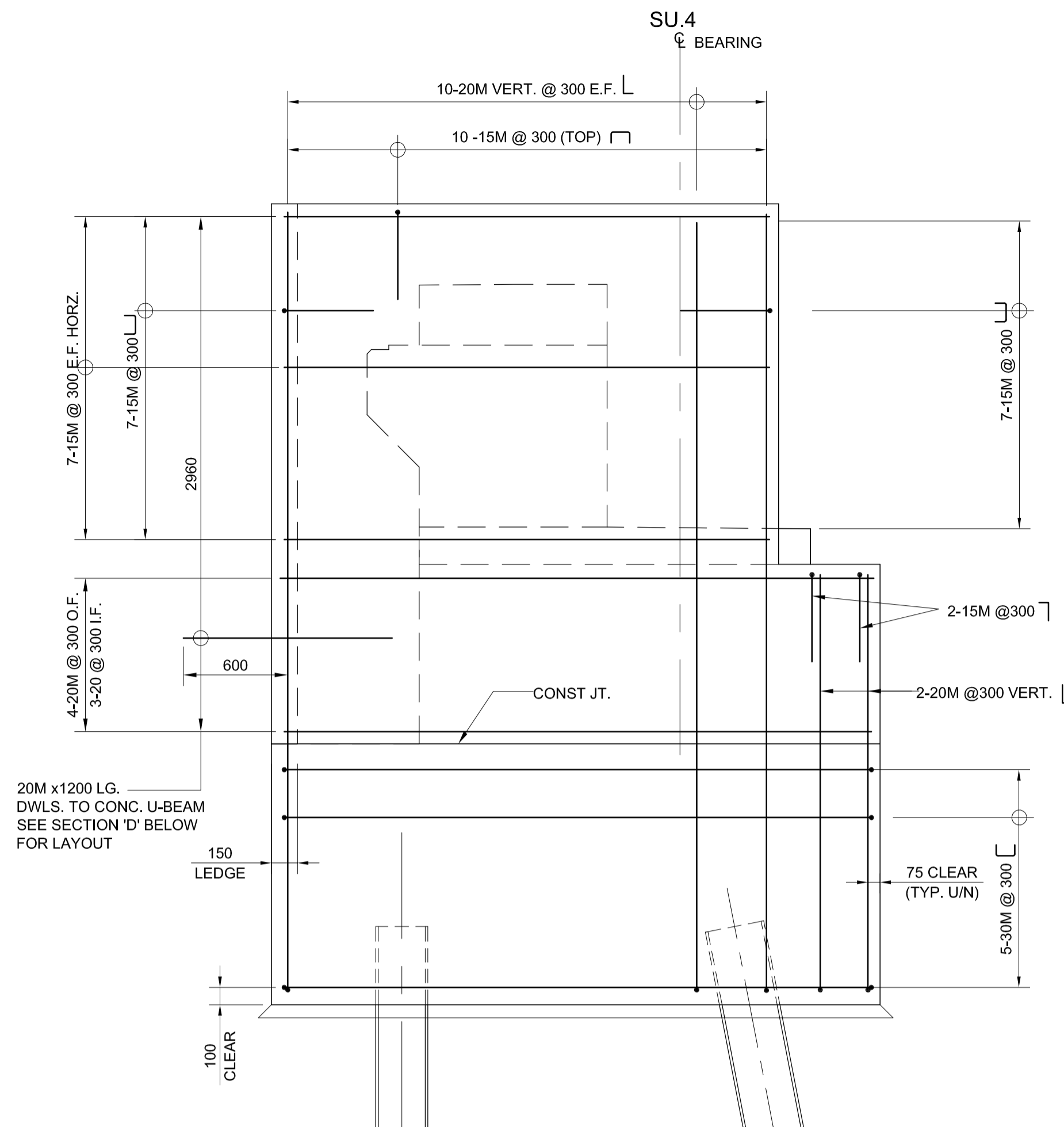
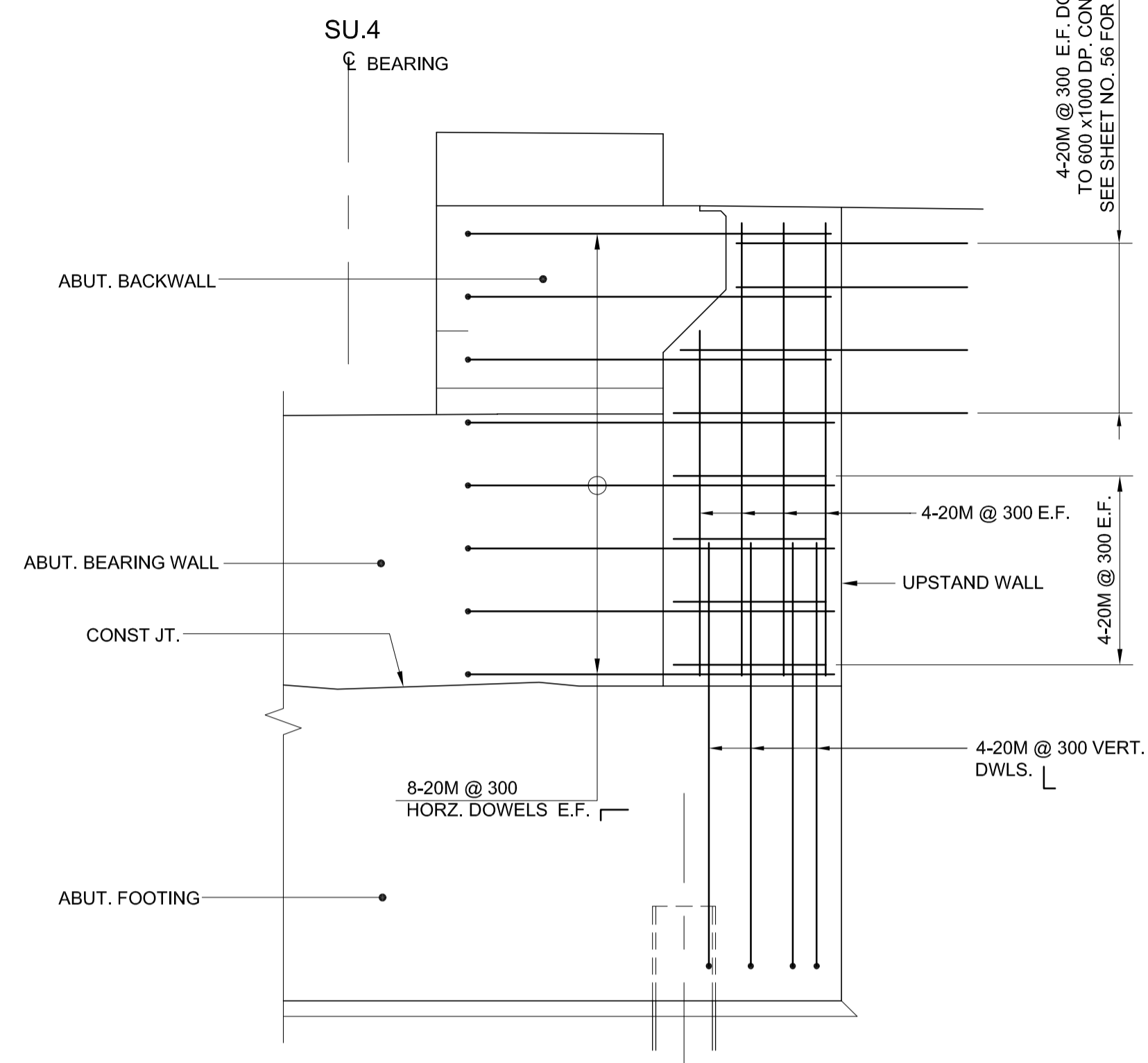


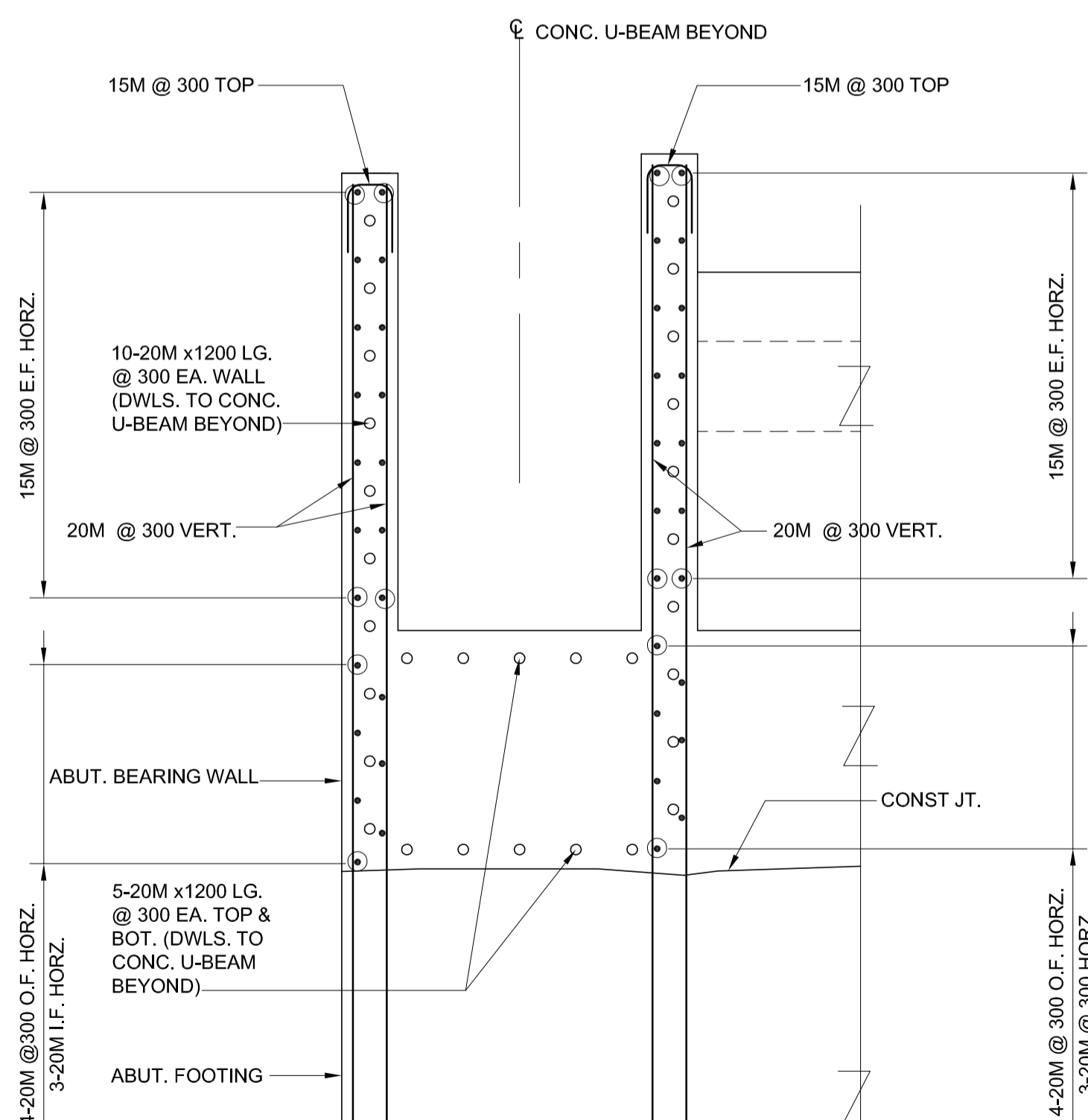
**SECTION A**  
SCALE 1:25



**SECTION B**  
SCALE 1:25  
NOTE: ABUTMENT FOOTING, BEARING WALL AND BACKWALL REINFORCING NOT SHOWN FOR CLARITY.



**SECTION C**  
SCALE 1:25  
NOTE: ABUTMENT FOOTING, BEARING WALL AND BACKWALL REINFORCING NOT SHOWN FOR CLARITY.



**SECTION D**  
SCALE 1:25  
NOTE: ABUTMENT FOOTING AND BEARING WALL REINFORCING NOT SHOWN FOR CLARITY.



LOCATION UNDERGROUND STRUCTURES SUPPLY U/G STRUCTURES COMMITTEE DATE	APPROVED DATE	B.M. ELEV. 654265 (633392.694, 5525026.192) 232.518	DESIGNED BY FAK DRAWN BY NBG CHECKED BY SSR APPROVED BY DPK		ENGINEER'S SEAL PROVINCE OF MANITOBA ORIGINAL STAMPED BY S.S. RIHAL 2010/05/14 REGISTERED PROFESSIONAL ENGINEER		<b>THE CITY OF WINNIPEG</b> TRANSIT DEPARTMENT
NOTE: LOCATION OF UNDERGROUND STRUCTURES AS SHOWN ARE BASED ON THE BEST INFORMATION AVAILABLE BUT NO GUARANTEE IS GIVEN THAT ALL EXISTING UTILITIES ARE SHOWN OR THAT THE GIVEN LOCATIONS ARE EXACT. CONFIRMATION OF EXISTENCE AND EXACT LOCATION OF ALL SERVICES MUST BE OBTAINED FROM THE INDIVIDUAL UTILITIES BEFORE PROCEEDING WITH CONSTRUCTION.			HOR. SCALE VERTICAL	RELEASED FOR CONSTRUCTION ORIGINAL SIGNED BY RANDY FINGAS	CONSULTANT PROJECT NO. 088813	SOUTHWEST RAPID TRANSIT CORRIDOR - STAGE 1 OSBORNE STATION & ASSOCIATED WORKS	CITY DRAWING NUMBER B237-10-28 SHEET 28 OF 121 CONSULTANT DRAWING NUMBER C5-S1113-T
NO. REVISIONS DATE BY			2 ISSUED FOR ADDENDUM #2 10/06/11 DPK 1 ISSUED FOR TENDER 10/05/14 DPK	DATE 2010/05/14	DATE 2010/05/14	EAST ABUTMENT SU-4 REINFORCEMENT 2 OF 2	